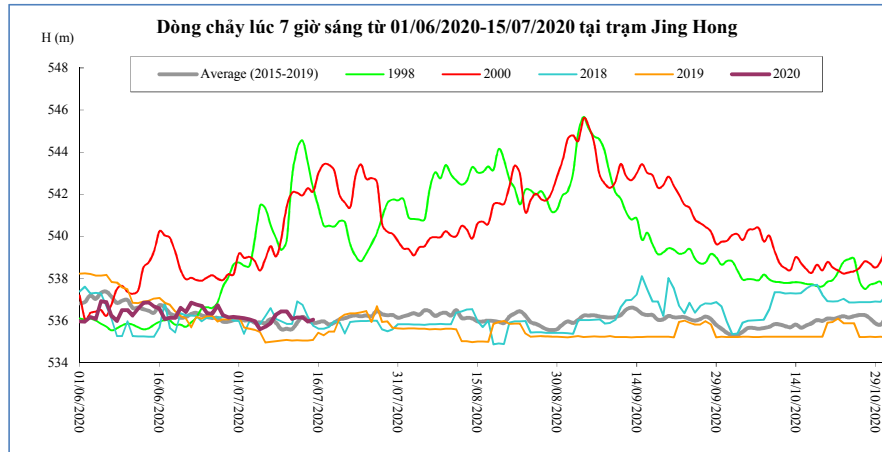


**DIỄN BIẾN DÒNG CHẢY TẠI CÁC TRẠM TRÊN DÒNG CHÍNH SÔNG MÊ CÔNG**  
**Dòng chảy lúc 7 giờ sáng từ 01/06/2020-15/07/2020**

**Jing Hong**

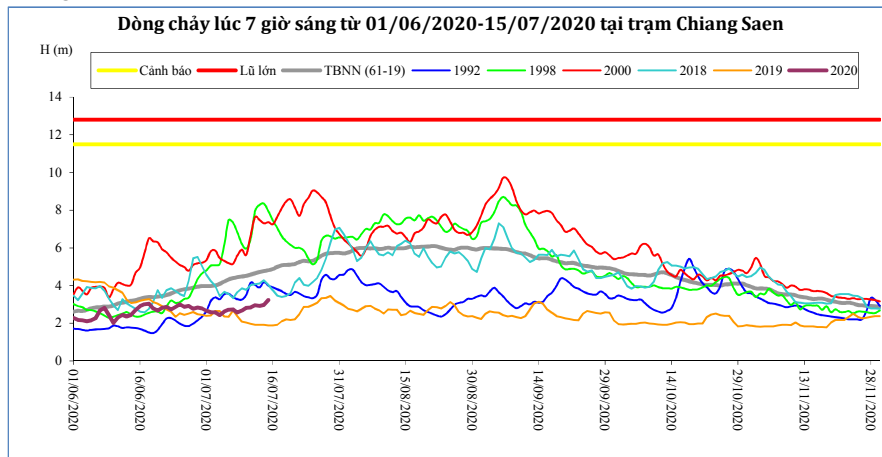
Hôm nay

15/07/20



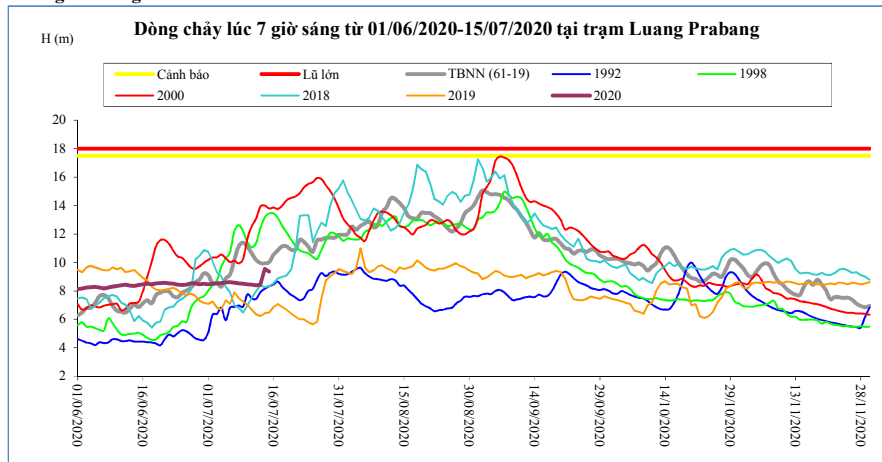
T. gian	H(m)	W(tỷ m <sup>3</sup> )
01/07/20	536,15	3,35
02/07/20	536,12	3,44
03/07/20	536,06	3,53
04/07/20	535,97	3,61
05/07/20	535,59	3,68
06/07/20	535,71	3,76
07/07/20	535,89	3,84
08/07/20	536,29	3,94
09/07/20	536,44	4,05
10/07/20	536,44	4,16
11/07/20	536,08	4,25
12/07/20	536,16	4,34
13/07/20	536,16	4,44
14/07/20	535,96	4,52
15/07/20	536,05	4,61

**Chiang Saen**



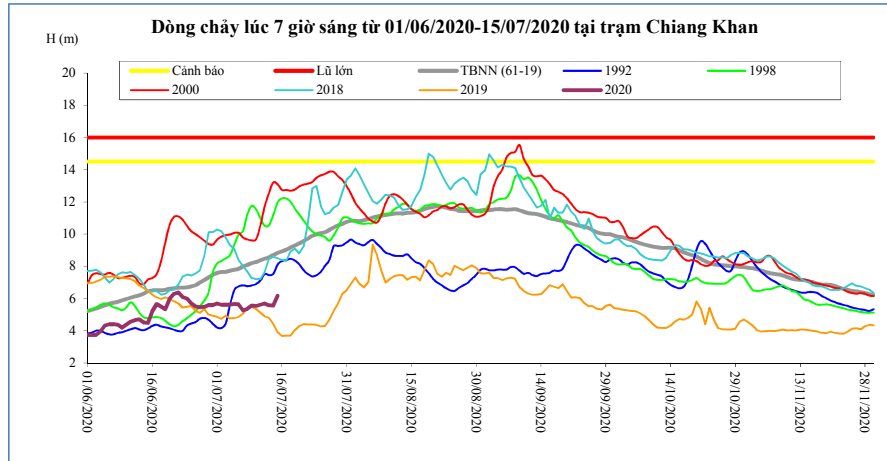
T. gian	H(m)	W(tỷ m <sup>3</sup> )
01/07/20	2,67	4,06
02/07/20	2,58	4,19
03/07/20	2,58	4,32
04/07/20	2,43	4,44
05/07/20	2,62	4,57
06/07/20	2,72	4,71
07/07/20	2,73	4,85
08/07/20	2,56	4,97
09/07/20	2,66	5,11
10/07/20	2,81	5,25
11/07/20	2,83	5,40
12/07/20	2,95	5,55
13/07/20	2,92	5,70
14/07/20	2,97	5,86
15/07/20	3,23	6,03

**Luang Prabang**



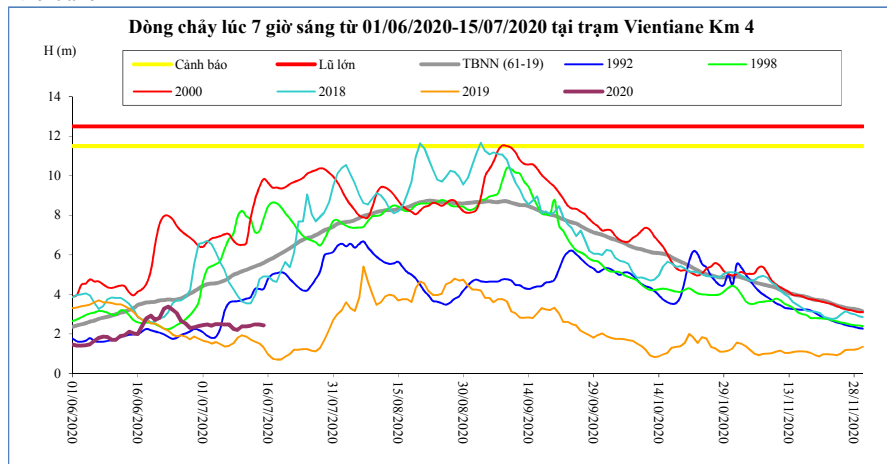
T. gian	H(m)	W(tỷ m <sup>3</sup> )
01/07/20	8,47	12,88
02/07/20	8,50	13,31
03/07/20	8,53	13,74
04/07/20	8,55	14,17
05/07/20	8,59	14,60
06/07/20	8,62	15,03
07/07/20	8,57	15,47
08/07/20	8,54	15,89
09/07/20	8,50	16,32
10/07/20	8,46	16,74
11/07/20	8,43	17,16
12/07/20	8,40	17,57
13/07/20	8,45	17,99
14/07/20	9,55	18,52
15/07/20	9,36	19,02

**Chiang Khan** Vị trí sau hồ Xayabury



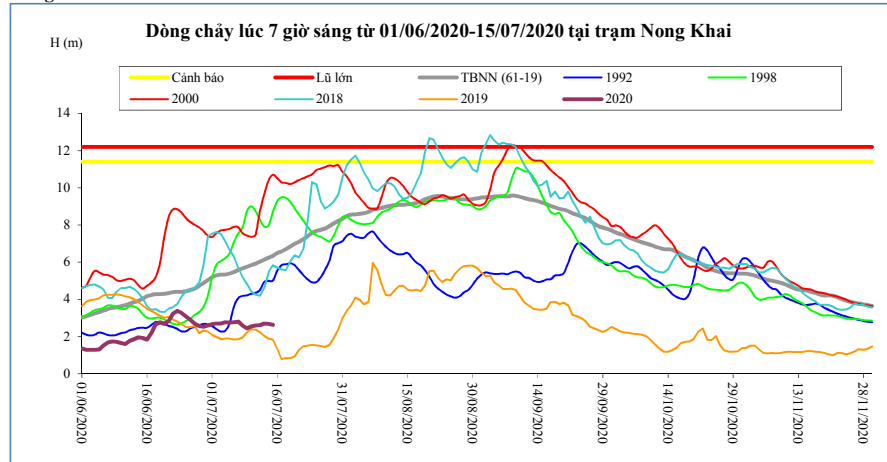
T. gian	H(m)	W(tỷ m <sup>3</sup> )
01/07/20	5,70	5,65
02/07/20	5,62	5,86
03/07/20	5,62	6,08
04/07/20	5,62	6,30
05/07/20	5,65	6,52
06/07/20	5,64	6,73
07/07/20	5,26	6,93
08/07/20	5,36	7,13
09/07/20	5,56	7,34
10/07/20	5,54	7,55
11/07/20	5,62	7,77
12/07/20	5,70	7,99
13/07/20	5,57	8,20
14/07/20	5,55	8,41
15/07/20	6,18	8,67

**Vientiane Km 4**



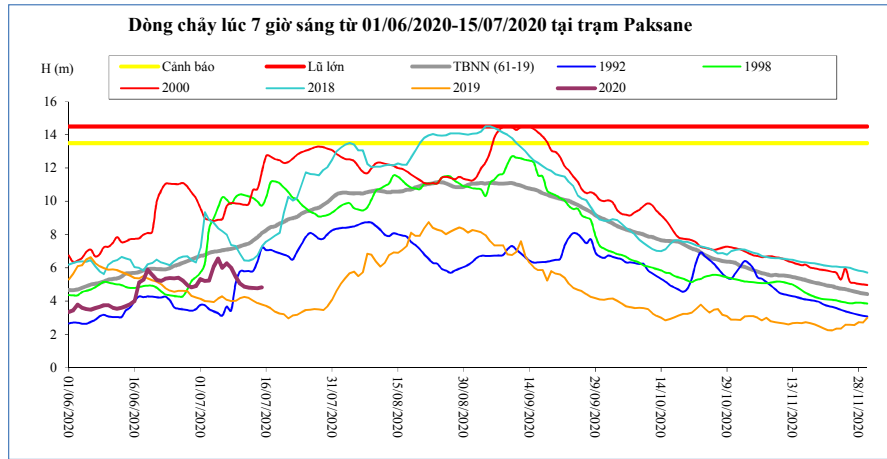
T. gian	H(m)	W(tỷ m <sup>3</sup> )
01/07/20	2,45	6,09
02/07/20	2,48	6,32
03/07/20	2,42	6,56
04/07/20	2,50	6,80
05/07/20	2,50	7,05
06/07/20	2,48	7,31
07/07/20	2,48	7,55
08/07/20	2,25	7,79
09/07/20	2,20	8,05
10/07/20	2,38	8,29
11/07/20	2,38	8,54
12/07/20	2,42	8,78
13/07/20	2,48	9,02
14/07/20	2,48	9,25
15/07/20	2,43	9,52

**Nong Khai**



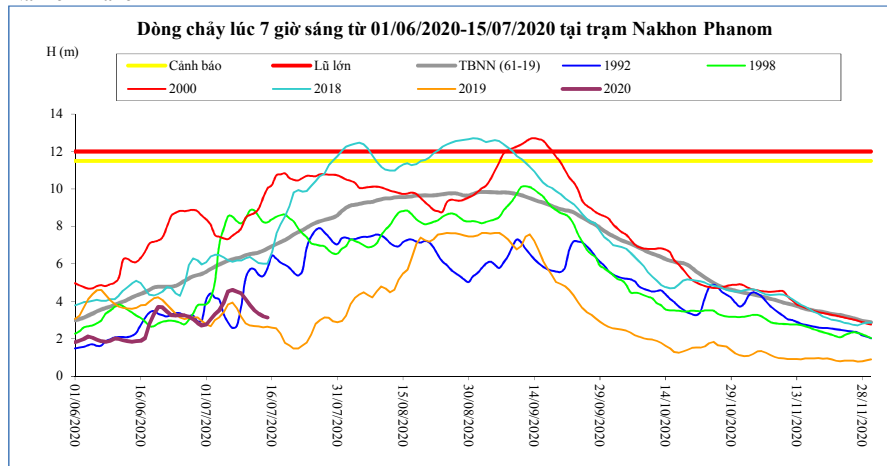
T. gian	H(m)	W(tỷ m <sup>3</sup> )
01/07/20	2,67	6,28
02/07/20	2,70	6,52
03/07/20	2,70	6,77
04/07/20	2,78	7,02
05/07/20	2,76	7,29
06/07/20	2,77	7,56
07/07/20	2,81	7,82
08/07/20	2,60	8,08
09/07/20	2,44	8,35
10/07/20	2,55	8,62
11/07/20	2,60	8,87
12/07/20	2,62	9,13
13/07/20	2,70	9,38
14/07/20	2,68	9,62
15/07/20	2,63	9,90

**Paksane**



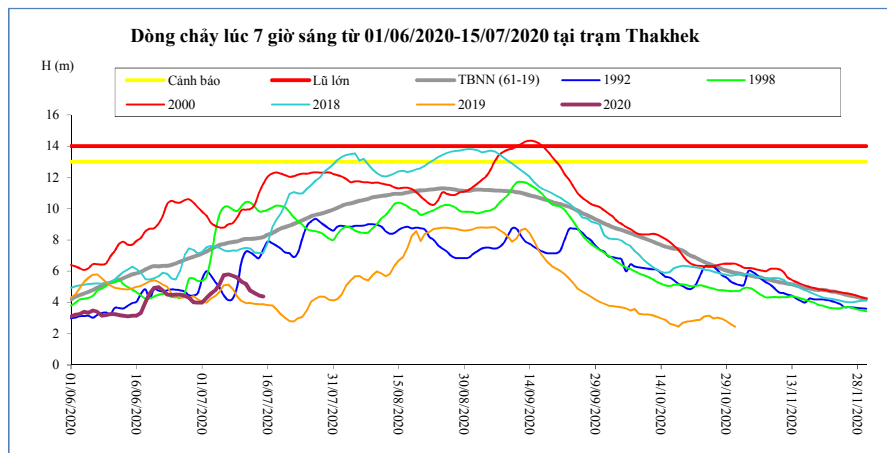
T. gian	H(m)	W(tỷ m <sup>3</sup> )
01/07/20	5,34	7,92
02/07/20	5,21	8,23
03/07/20	5,23	8,56
04/07/20	6,07	8,91
05/07/20	6,57	9,29
06/07/20	6,01	9,72
07/07/20	6,27	10,15
08/07/20	6,00	10,57
09/07/20	5,47	10,99
10/07/20	5,07	11,39
11/07/20	4,88	11,76
12/07/20	4,81	12,10
13/07/20	4,80	12,43
14/07/20	4,77	12,75
15/07/20	4,84	13,09

**Nakhon Phanom**



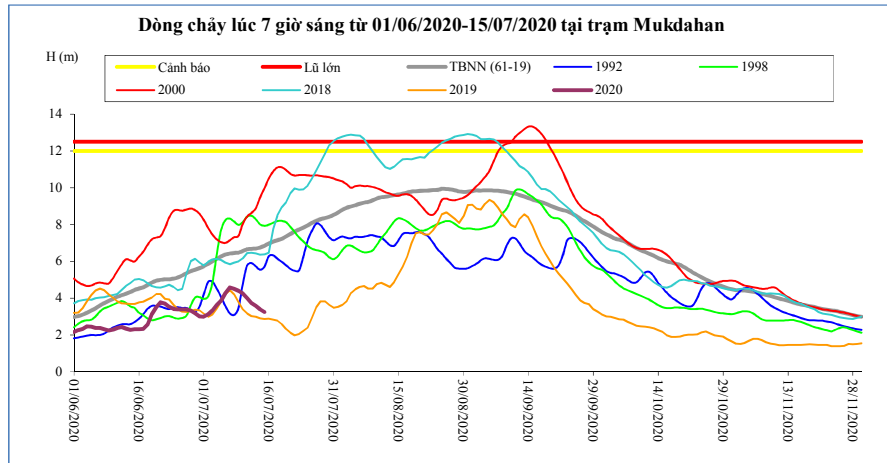
T. gian	H(m)	W(tỷ m <sup>3</sup> )
01/07/20	2,75	9,88
02/07/20	3,05	10,26
03/07/20	3,31	10,69
04/07/20	3,53	11,15
05/07/20	3,93	11,67
06/07/20	4,54	12,29
07/07/20	4,61	12,91
08/07/20	4,51	13,53
09/07/20	4,43	14,13
10/07/20	4,13	14,68
11/07/20	3,78	15,17
12/07/20	3,52	15,63
13/07/20	3,34	16,06
14/07/20	3,21	16,47
15/07/20	3,14	16,87

**Thakhek**



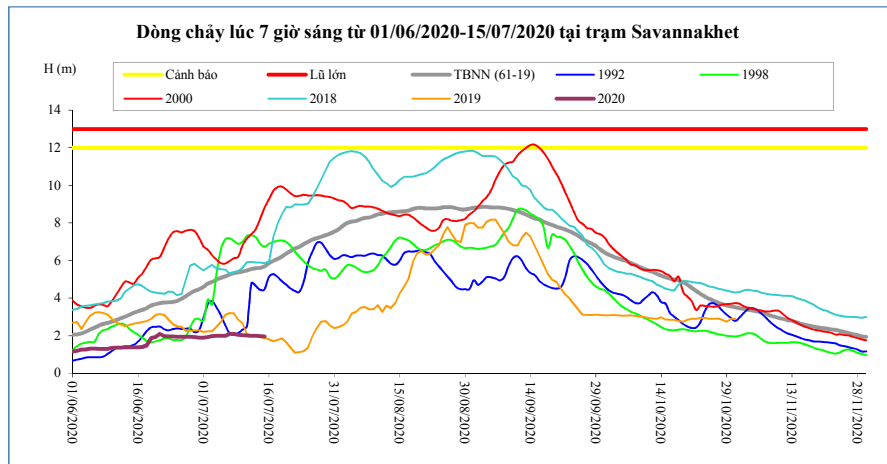
T. gian	H(m)	W(tỷ m <sup>3</sup> )
01/07/20	4,00	9,76
02/07/20	4,31	10,14
03/07/20	4,56	10,55
04/07/20	4,77	11,00
05/07/20	5,18	11,50
06/07/20	5,75	12,10
07/07/20	5,80	12,70
08/07/20	5,70	13,29
09/07/20	5,60	13,86
10/07/20	5,32	14,39
11/07/20	5,18	14,89
12/07/20	4,75	15,34
13/07/20	4,59	15,75
14/07/20	4,45	16,15
15/07/20	4,39	16,54

**Mukdahan**



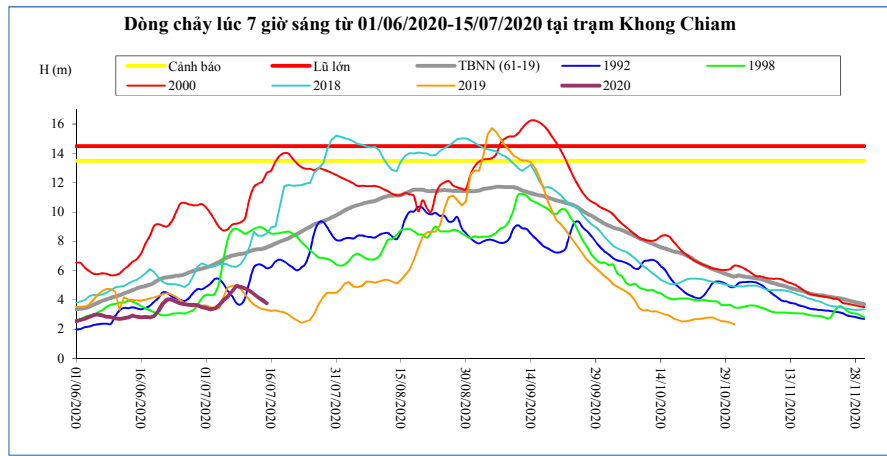
T. gian	H(m)	W(tỷ m <sup>3</sup> )
01/07/20	2,98	9,89
02/07/20	3,10	10,27
03/07/20	3,32	10,69
04/07/20	3,62	11,13
05/07/20	3,88	11,63
06/07/20	4,28	12,22
07/07/20	4,58	12,83
08/07/20	4,50	13,42
09/07/20	4,40	14,00
10/07/20	4,26	14,53
11/07/20	4,00	15,05
12/07/20	3,73	15,50
13/07/20	3,57	15,93
14/07/20	3,38	16,34
15/07/20	3,25	16,74

**Savannakhet**



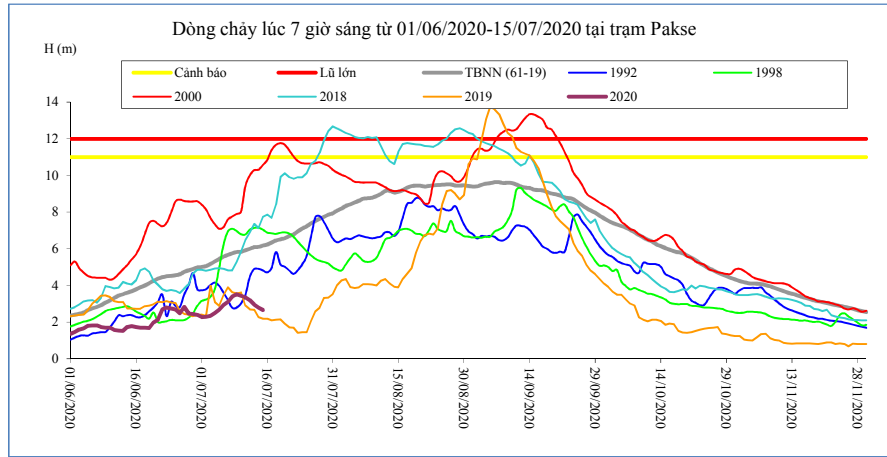
T. gian	H(m)	W(tỷ m <sup>3</sup> )
01/07/20	1,89	9,90
02/07/20	1,92	10,28
03/07/20	1,97	10,69
04/07/20	1,99	11,14
05/07/20	1,99	11,64
06/07/20	2,00	12,23
07/07/20	2,10	12,83
08/07/20	2,10	13,42
09/07/20	2,05	14,00
10/07/20	2,03	14,54
11/07/20	2,01	15,06
12/07/20	2,00	15,51
13/07/20	2,00	15,94
14/07/20	1,98	16,35
15/07/20	1,96	16,75

**Khong Chiam**



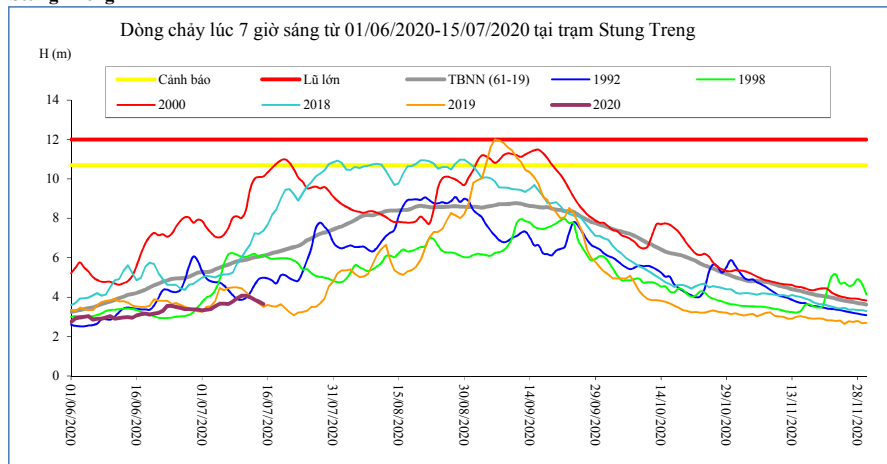
T. gian	H(m)	W(tỷ m <sup>3</sup> )
01/07/20	3,45	11,27
02/07/20	3,35	11,66
03/07/20	3,43	12,07
04/07/20	3,65	12,51
05/07/20	3,98	13,00
06/07/20	4,22	13,54
07/07/20	4,59	14,14
08/07/20	4,95	14,81
09/07/20	4,88	15,46
10/07/20	4,79	16,10
11/07/20	4,64	16,70
12/07/20	4,42	17,28
13/07/20	4,19	17,81
14/07/20	3,98	18,30
15/07/20	3,78	18,76

**Pakse**



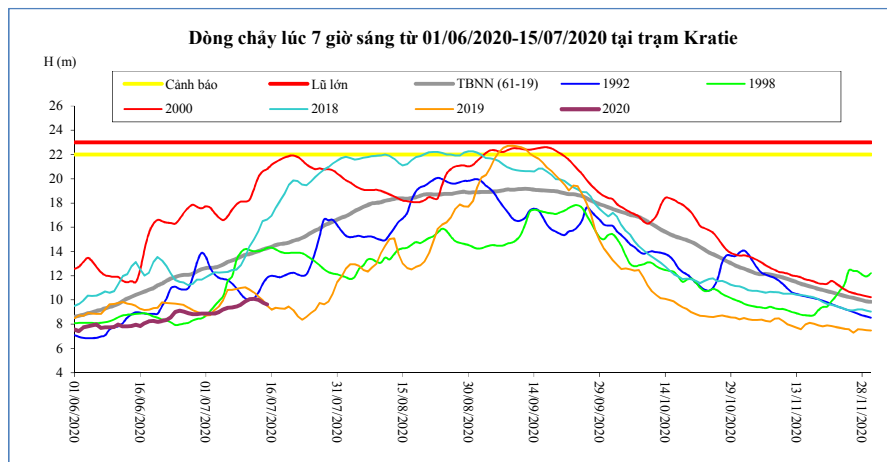
T. gian	H(m)	W(tỷ m <sup>3</sup> )
01/07/20	2,28	11,19
02/07/20	2,30	11,60
03/07/20	2,34	12,02
04/07/20	2,50	12,47
05/07/20	2,68	12,95
06/07/20	2,94	13,49
07/07/20	3,12	14,06
08/07/20	3,40	14,68
09/07/20	3,52	15,33
10/07/20	3,42	15,96
11/07/20	3,36	16,58
12/07/20	3,20	17,16
13/07/20	2,95	17,70
14/07/20	2,80	18,21
15/07/20	2,66	18,69

**Stung Treng**



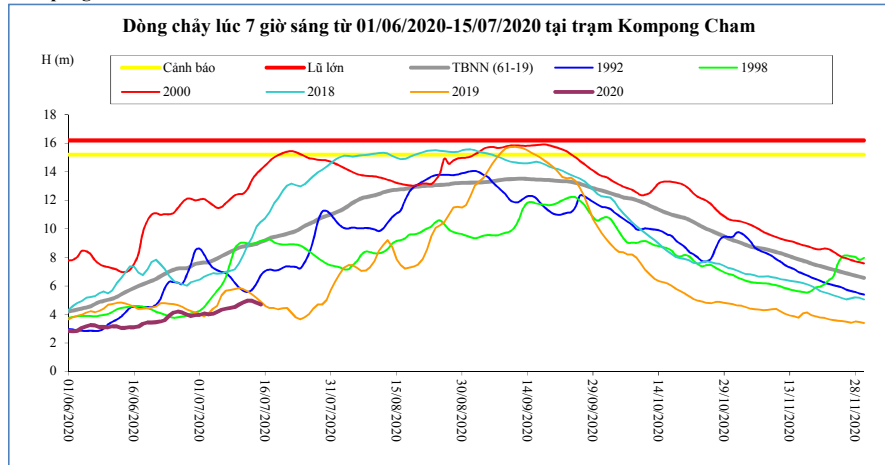
T. gian	H(m)	W(tỷ m <sup>3</sup> )
01/07/20	3,32	12,09
02/07/20	3,36	12,57
03/07/20	3,40	13,05
04/07/20	3,54	13,55
05/07/20	3,67	14,09
06/07/20	3,67	14,65
07/07/20	3,66	15,21
08/07/20	3,78	15,80
09/07/20	3,95	16,41
10/07/20	4,07	17,06
11/07/20	4,07	17,74
12/07/20	3,99	18,42
13/07/20	3,87	19,07
14/07/20	3,76	19,70
15/07/20	3,65	20,29

**Kratie**



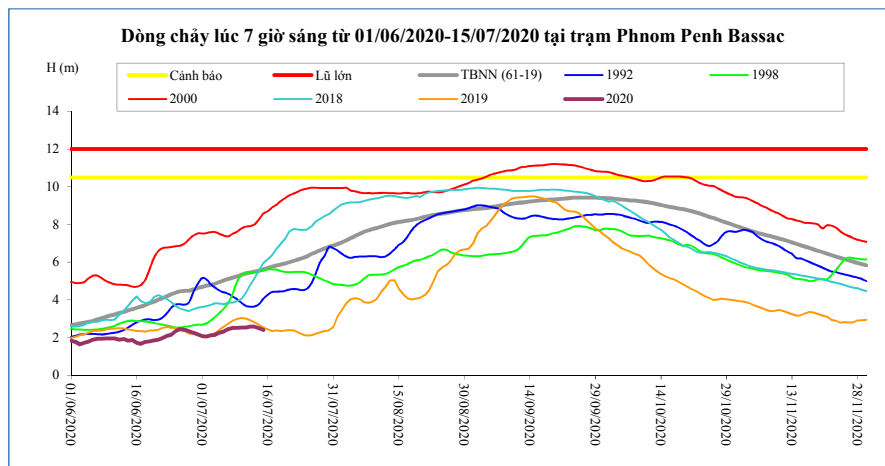
T. gian	H(m)	W(tỷ m <sup>3</sup> )
01/07/20	8,89	12,20
02/07/20	8,87	12,69
03/07/20	8,89	13,19
04/07/20	9,00	13,70
05/07/20	9,21	14,24
06/07/20	9,34	14,80
07/07/20	9,37	15,37
08/07/20	9,45	15,95
09/07/20	9,61	16,55
10/07/20	9,88	17,21
11/07/20	10,07	17,89
12/07/20	10,10	18,58
13/07/20	10,00	19,26
14/07/20	9,79	19,89
15/07/20	9,64	20,50

**Kompong Cham**



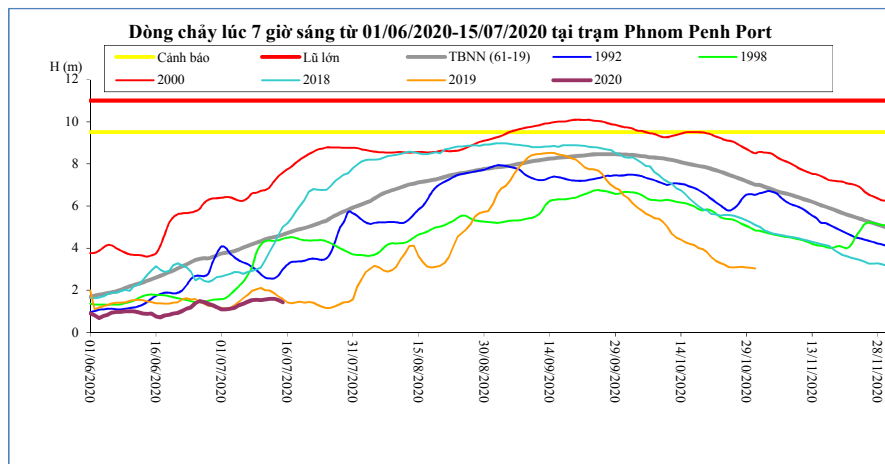
T. gian	H(m)	Hbq(m)
01/07/20	3,98	7,60
02/07/20	4,06	7,63
03/07/20	4,00	7,66
04/07/20	4,04	7,78
05/07/20	4,18	7,93
06/07/20	4,32	8,09
07/07/20	4,40	8,24
08/07/20	4,44	8,39
09/07/20	4,52	8,54
10/07/20	4,68	8,68
11/07/20	4,85	8,76
12/07/20	4,97	8,83
13/07/20	4,95	8,88
14/07/20	4,82	8,95
15/07/20	4,68	9,08

**Phnom Penh Bassac**



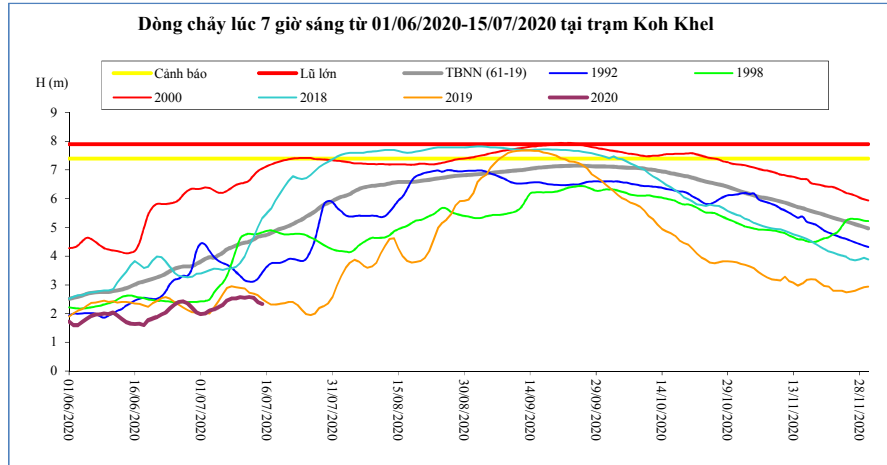
T. gian	H(m)	Hbq(m)
01/07/20	2,08	4,69
02/07/20	2,07	4,76
03/07/20	2,13	4,79
04/07/20	2,15	4,87
05/07/20	2,27	4,95
06/07/20	2,34	5,04
07/07/20	2,45	5,11
08/07/20	2,52	5,18
09/07/20	2,53	5,25
10/07/20	2,54	5,34
11/07/20	2,54	5,40
12/07/20	2,58	5,45
13/07/20	2,58	5,50
14/07/20	2,51	5,56
15/07/20	2,41	5,63

**Phnom Penh Port**



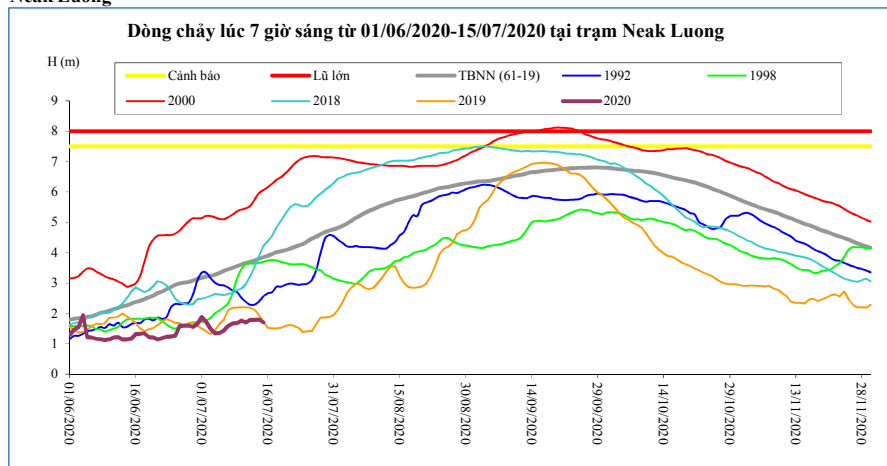
T. gian	H(m)	Hbq(m)
01/07/20	1,10	3,74
02/07/20	1,10	3,78
03/07/20	1,13	3,82
04/07/20	1,17	3,86
05/07/20	1,29	3,95
06/07/20	1,36	4,03
07/07/20	1,46	4,11
08/07/20	1,54	4,18
09/07/20	1,55	4,26
10/07/20	1,54	4,34
11/07/20	1,56	4,42
12/07/20	1,60	4,48
13/07/20	1,60	4,52
14/07/20	1,53	4,58
15/07/20	1,43	4,64

**Koh Khel**



T. gian	H(m)	Hbq(m)
01/07/20	1,98	3,82
02/07/20	2,00	3,90
03/07/20	2,11	3,97
04/07/20	2,15	3,95
05/07/20	2,23	4,03
06/07/20	2,31	4,12
07/07/20	2,46	4,24
08/07/20	2,53	4,31
09/07/20	2,53	4,37
10/07/20	2,57	4,43
11/07/20	2,55	4,47
12/07/20	2,58	4,50
13/07/20	2,55	4,58
14/07/20	2,41	4,67
15/07/20	2,34	4,71

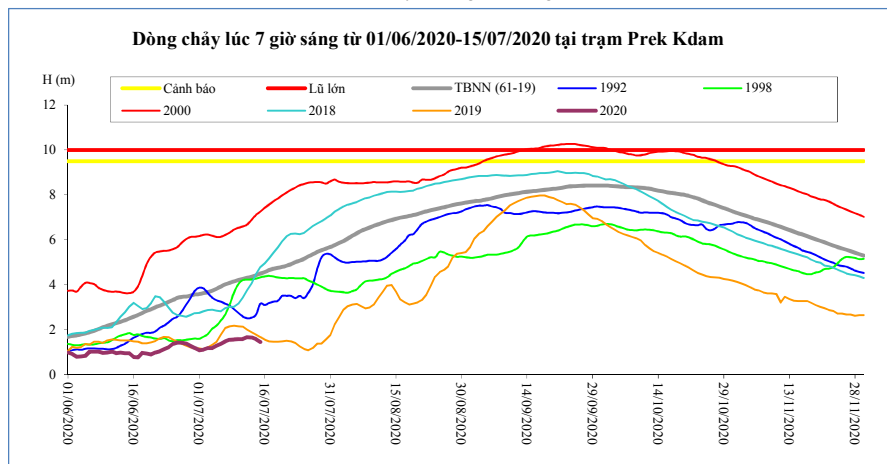
**Neak Luong**



T. gian	H(m)	Hbq(m)
01/07/20	1,88	3,17
02/07/20	1,72	3,21
03/07/20	1,50	3,23
04/07/20	1,34	3,27
05/07/20	1,35	3,33
06/07/20	1,44	3,40
07/07/20	1,58	3,45
08/07/20	1,67	3,50
09/07/20	1,68	3,56
10/07/20	1,76	3,61
11/07/20	1,70	3,66
12/07/20	1,78	3,70
13/07/20	1,78	3,74
14/07/20	1,80	3,79
15/07/20	1,70	3,85

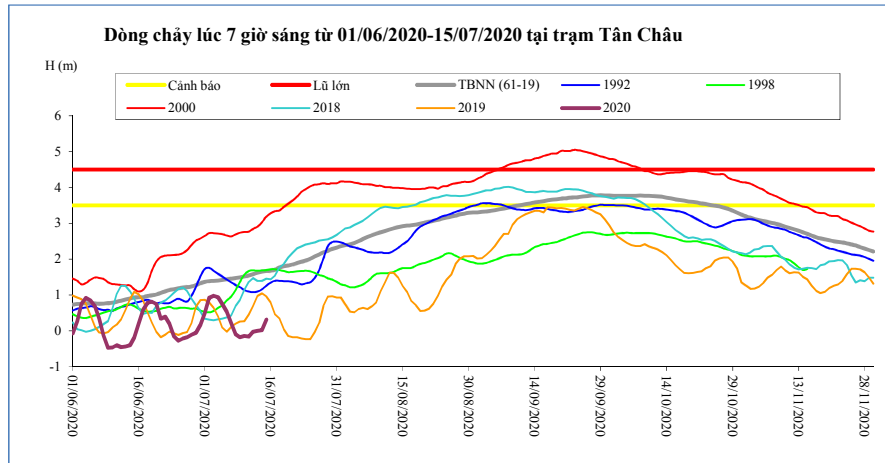
**Prek Kdam**

Biển Hồ chảy ra sông Mê Công.



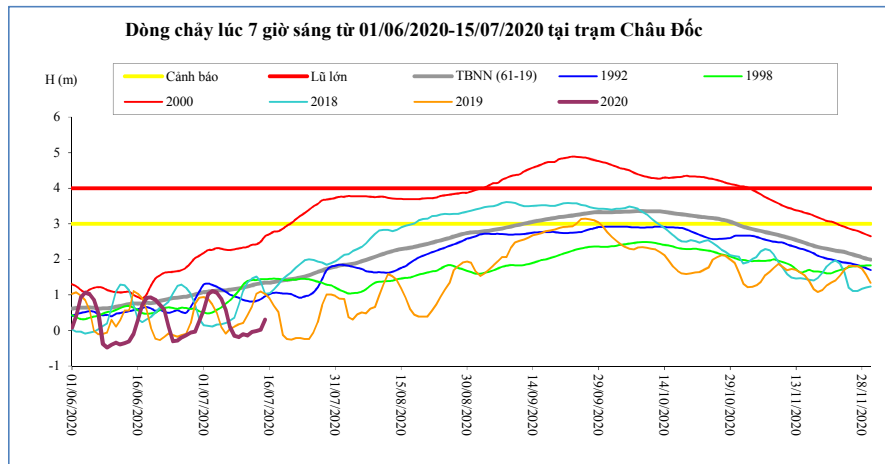
T. gian	H(m)	Biển Hồ
01/07/20	1,08	0,49
02/07/20	1,11	0,49
03/07/20	1,18	0,49
04/07/20	1,18	0,49
05/07/20	1,28	0,47
06/07/20	1,36	0,47
07/07/20	1,48	0,47
08/07/20	1,55	0,47
09/07/20	1,56	0,47
10/07/20	1,57	0,47
11/07/20	1,58	0,45
12/07/20	1,66	0,45
13/07/20	1,64	0,45
14/07/20	1,57	0,45
15/07/20	1,45	0,45

**Tân Châu**



T. gian	H(m)	Hbq(m)
01/07/20	0,49	1,37
02/07/20	0,92	1,39
03/07/20	0,98	1,40
04/07/20	0,94	1,41
05/07/20	0,75	1,42
06/07/20	0,54	1,44
07/07/20	0,22	1,45
08/07/20	-0,09	1,47
09/07/20	-0,17	1,50
10/07/20	-0,14	1,52
11/07/20	-0,16	1,55
12/07/20	-0,02	1,58
13/07/20	0,00	1,63
14/07/20	0,02	1,65
<b>15/07/20</b>	<b>0,32</b>	<b>1,67</b>

**Châu Đốc**



T. gian	H(m)	Hbq(m)
01/07/20	0,57	1,08
02/07/20	1,02	1,09
03/07/20	1,11	1,10
04/07/20	1,06	1,12
05/07/20	0,89	1,13
06/07/20	0,58	1,13
07/07/20	0,10	1,14
08/07/20	-0,15	1,16
09/07/20	-0,19	1,19
10/07/20	-0,11	1,21
11/07/20	-0,14	1,24
12/07/20	-0,04	1,27
13/07/20	-0,02	1,31
14/07/20	0,02	1,33
<b>15/07/20</b>	<b>0,31</b>	<b>1,34</b>

**Ghi chú:**

-: Không có số liệu

H(m): Mức nước lúc 7 giờ sáng lấy theo số liệu thực đo của MRC. W (tỷ m3): Ước tính của Viện Quy hoạch Thủy lợi Miền Nam. W là tổng lượng nước kể từ ngày 1 tháng 6. Riêng Biển Hồ là dung tích hiện tại. Hbq (m): Mức nước trung bình nhiều năm.



### BẢN ĐỒ VỊ TRÍ CÁC TRẠM ĐỌC DÒNG CHÍNH MÊ CÔNG

