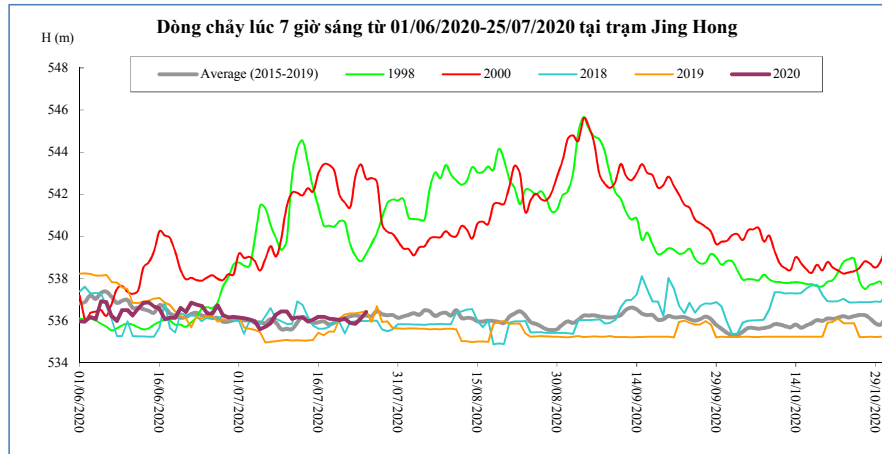


**DIỄN BIẾN DÒNG CHẢY TẠI CÁC TRẠM TRÊN DÒNG CHÍNH SÔNG MÊ CÔNG**  
**Dòng chảy lúc 7 giờ sáng từ 01/06/2020-25/07/2020**

**Jing Hong**

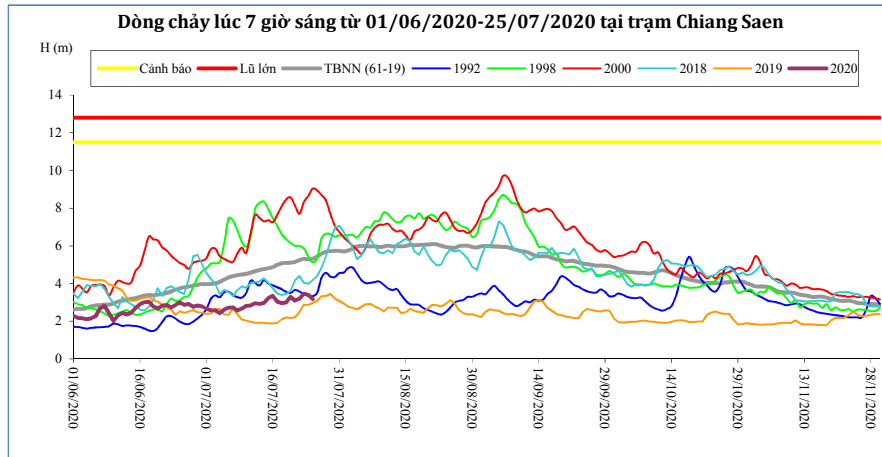
Hôm nay

**25/07/20**



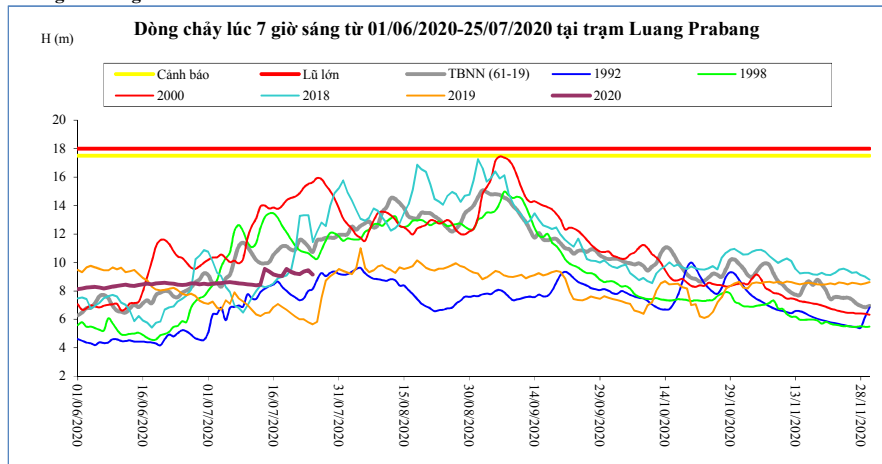
T. gian	H(m)	W(tỷ m <sup>3</sup> )
11/07/20	536,08	4,25
12/07/20	536,16	4,34
13/07/20	536,16	4,44
14/07/20	535,96	4,52
15/07/20	536,05	4,61
16/07/20	536,19	4,71
17/07/20	536,19	4,80
18/07/20	536,10	4,89
19/07/20	536,08	4,98
20/07/20	536,04	5,07
21/07/20	536,10	5,16
22/07/20	535,90	5,25
23/07/20	535,85	5,33
24/07/20	536,10	5,42
<b>25/07/20</b>	536,42	5,52

**Chiang Saen**



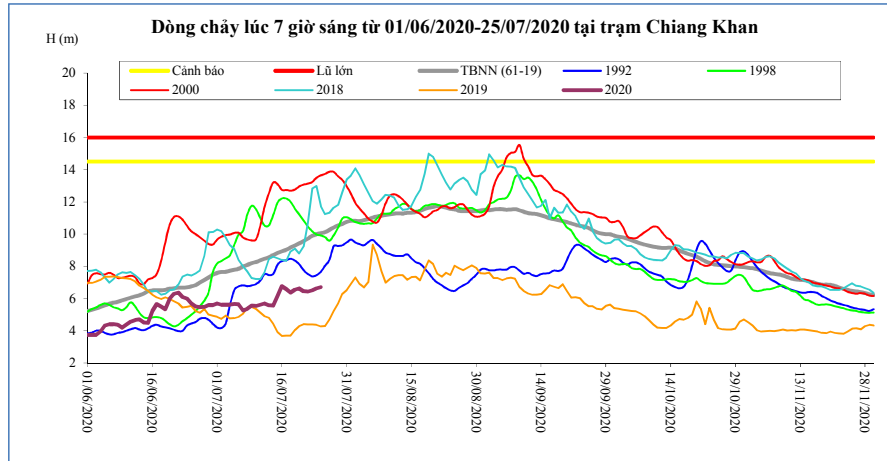
T. gian	H(m)	W(tỷ m <sup>3</sup> )
11/07/20	2,83	5,40
12/07/20	2,95	5,55
13/07/20	2,92	5,70
14/07/20	2,97	5,86
15/07/20	3,23	6,03
16/07/20	3,35	6,22
17/07/20	3,04	6,38
18/07/20	2,95	6,53
19/07/20	3,01	6,69
20/07/20	3,30	6,87
21/07/20	3,09	7,03
22/07/20	3,19	7,21
23/07/20	3,46	7,40
24/07/20	3,40	7,59
<b>25/07/20</b>	3,17	7,76

**Luang Prabang**



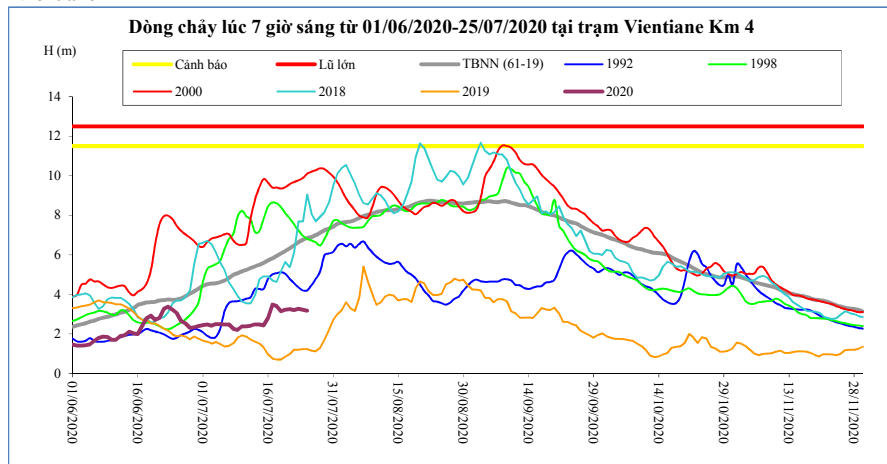
T. gian	H(m)	W(tỷ m <sup>3</sup> )
11/07/20	8,43	17,16
12/07/20	8,40	17,57
13/07/20	8,45	17,99
14/07/20	9,55	18,52
15/07/20	9,36	19,02
16/07/20	9,15	19,51
17/07/20	9,07	19,99
18/07/20	9,04	20,46
19/07/20	9,54	20,99
20/07/20	9,33	21,49
21/07/20	9,23	21,98
22/07/20	9,18	22,47
23/07/20	9,35	22,97
24/07/20	9,45	23,49
<b>25/07/20</b>	9,15	23,97

**Chiang Khan** Vị trí sau hồ Xayabury



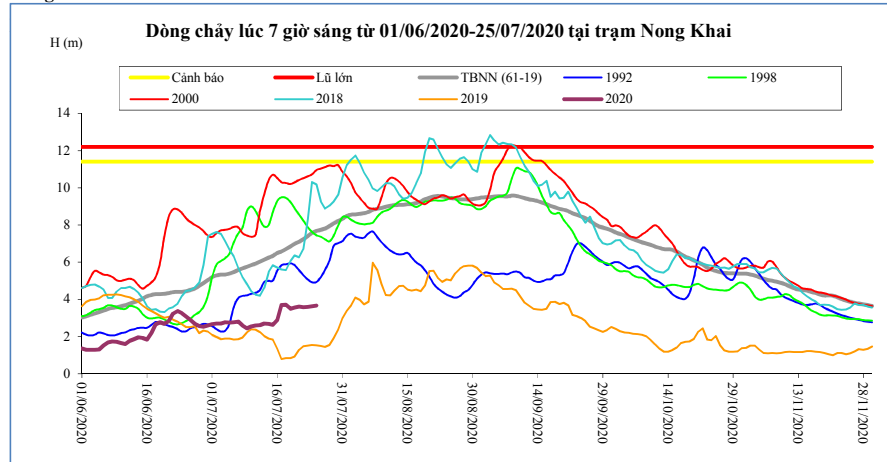
T. gian	H(m)	W(tỷ m <sup>3</sup> )
11/07/20	5,62	7,77
12/07/20	5,70	7,99
13/07/20	5,57	8,20
14/07/20	5,55	8,41
15/07/20	6,18	8,67
16/07/20	6,77	8,97
17/07/20	6,60	9,26
18/07/20	6,38	9,53
19/07/20	6,56	9,81
20/07/20	6,63	10,10
21/07/20	6,45	10,38
22/07/20	6,43	10,65
23/07/20	6,52	10,94
24/07/20	6,63	11,23
<b>25/07/20</b>	<b>6,72</b>	<b>11,52</b>

**Vientiane Km 4**



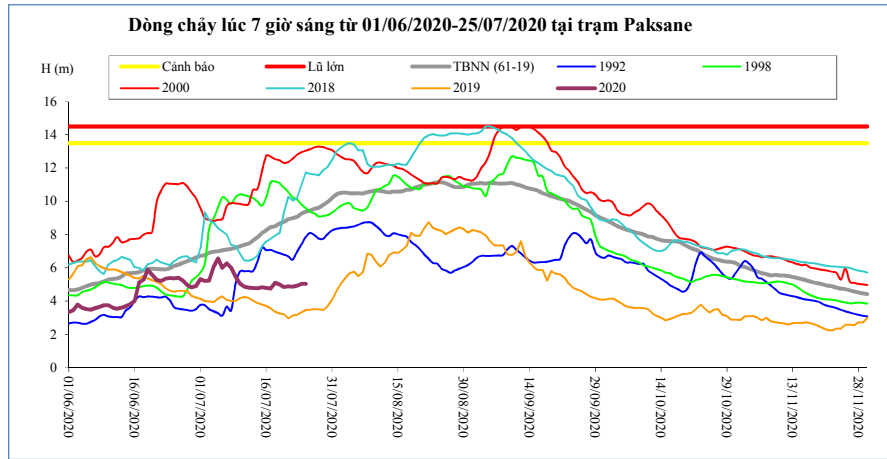
T. gian	H(m)	W(tỷ m <sup>3</sup> )
11/07/20	2,38	8,54
12/07/20	2,42	8,78
13/07/20	2,48	9,02
14/07/20	2,48	9,25
15/07/20	2,43	9,52
16/07/20	2,80	9,84
17/07/20	3,48	10,13
18/07/20	3,40	10,42
19/07/20	3,14	10,72
20/07/20	3,23	11,02
21/07/20	3,26	11,32
22/07/20	3,20	11,61
23/07/20	3,28	11,91
24/07/20	3,22	12,21
<b>25/07/20</b>	<b>3,18</b>	<b>12,53</b>

**Nong Khai**



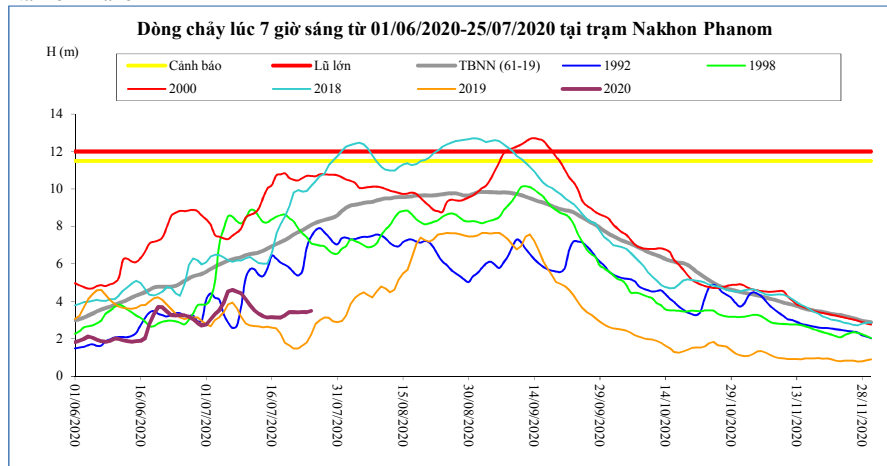
T. gian	H(m)	W(tỷ m <sup>3</sup> )
11/07/20	2,60	8,87
12/07/20	2,62	9,13
13/07/20	2,70	9,38
14/07/20	2,68	9,62
15/07/20	2,63	9,90
16/07/20	2,90	10,21
17/07/20	3,70	10,52
18/07/20	3,71	10,81
19/07/20	3,49	11,11
20/07/20	3,56	11,42
21/07/20	3,62	11,73
22/07/20	3,58	12,03
23/07/20	3,60	12,33
24/07/20	3,63	12,64
<b>25/07/20</b>	<b>3,66</b>	<b>12,96</b>

**Paksane**



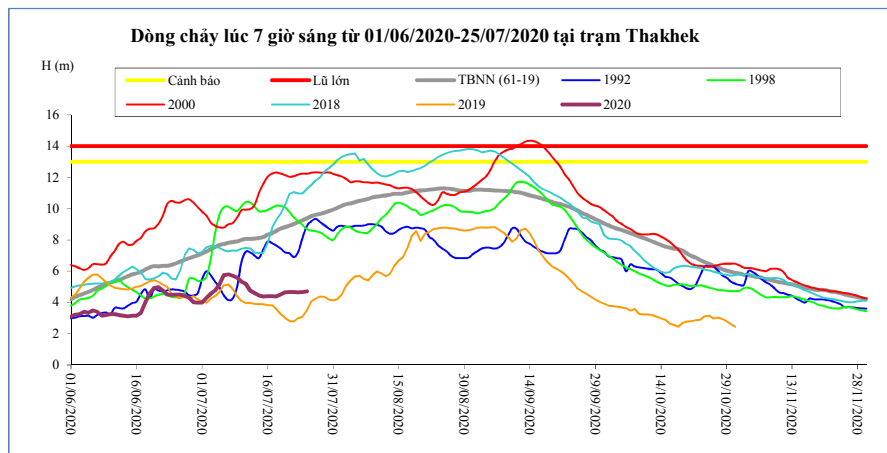
T. gian	H(m)	W(tỷ m <sup>3</sup> )
11/07/20	4,88	11,76
12/07/20	4,81	12,10
13/07/20	4,80	12,43
14/07/20	4,77	12,75
15/07/20	4,84	13,09
16/07/20	4,79	13,44
17/07/20	4,75	13,79
18/07/20	5,10	14,13
19/07/20	5,00	14,49
20/07/20	4,85	14,86
21/07/20	4,89	15,23
22/07/20	4,88	15,59
23/07/20	4,93	15,96
24/07/20	5,04	16,33
<b>25/07/20</b>	<b>5,05</b>	<b>16,71</b>

**Nakhon Phanom**



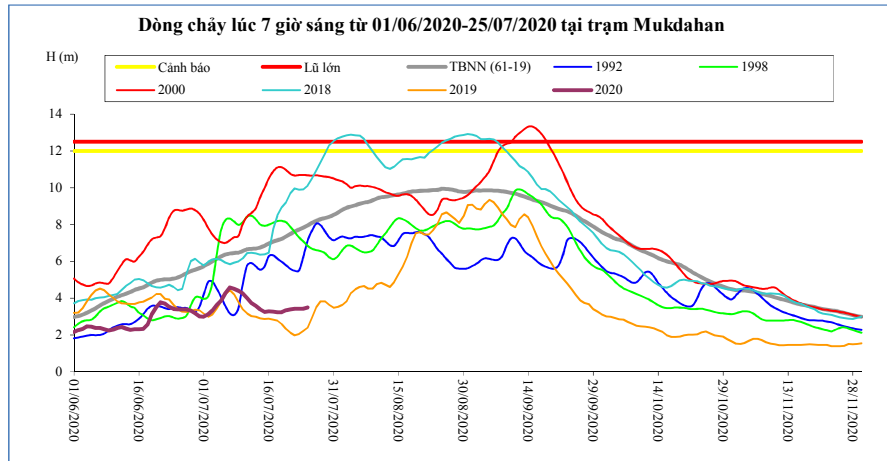
T. gian	H(m)	W(tỷ m <sup>3</sup> )
11/07/20	3,78	15,17
12/07/20	3,52	15,63
13/07/20	3,34	16,06
14/07/20	3,21	16,47
15/07/20	3,14	16,87
16/07/20	3,15	17,28
17/07/20	3,14	17,68
18/07/20	3,14	18,08
19/07/20	3,25	18,50
20/07/20	3,42	18,94
21/07/20	3,43	19,38
22/07/20	3,41	19,82
23/07/20	3,42	20,26
24/07/20	3,43	20,71
<b>25/07/20</b>	<b>3,49</b>	<b>21,16</b>

**Thakhek**



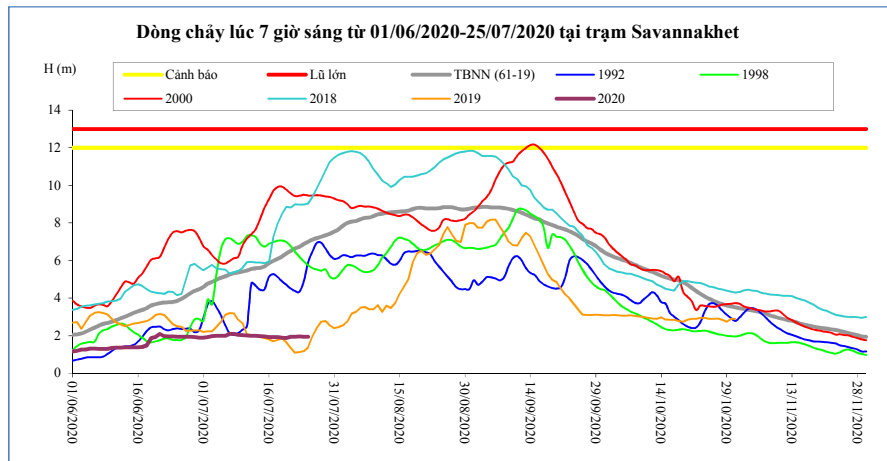
T. gian	H(m)	W(tỷ m <sup>3</sup> )
11/07/20	5,18	14,89
12/07/20	4,75	15,34
13/07/20	4,59	15,75
14/07/20	4,45	16,15
15/07/20	4,39	16,54
16/07/20	4,40	16,93
17/07/20	4,40	17,33
18/07/20	4,39	17,72
19/07/20	4,50	18,12
20/07/20	4,65	18,55
21/07/20	4,67	18,98
22/07/20	4,67	19,41
23/07/20	4,65	19,83
24/07/20	4,67	20,26
<b>25/07/20</b>	<b>4,72</b>	<b>20,70</b>

**Mukdahan**



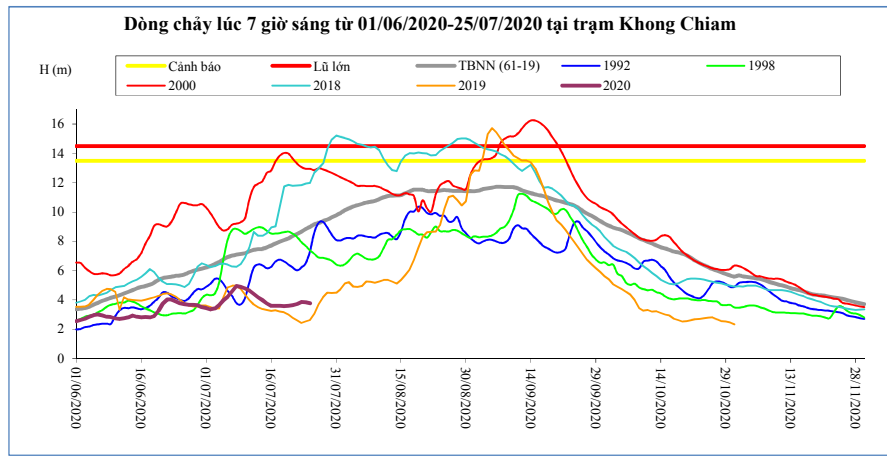
T. gian	H(m)	W(tỷ m <sup>3</sup> )
11/07/20	4,00	15,05
12/07/20	3,73	15,50
13/07/20	3,57	15,93
14/07/20	3,38	16,34
15/07/20	3,25	16,74
16/07/20	3,28	17,13
17/07/20	3,26	17,53
18/07/20	3,22	17,92
19/07/20	3,23	18,33
20/07/20	3,33	18,76
21/07/20	3,38	19,19
22/07/20	3,42	19,62
23/07/20	3,42	20,05
24/07/20	3,42	20,48
<b>25/07/20</b>	<b>3,48</b>	<b>20,92</b>

**Savannakhet**



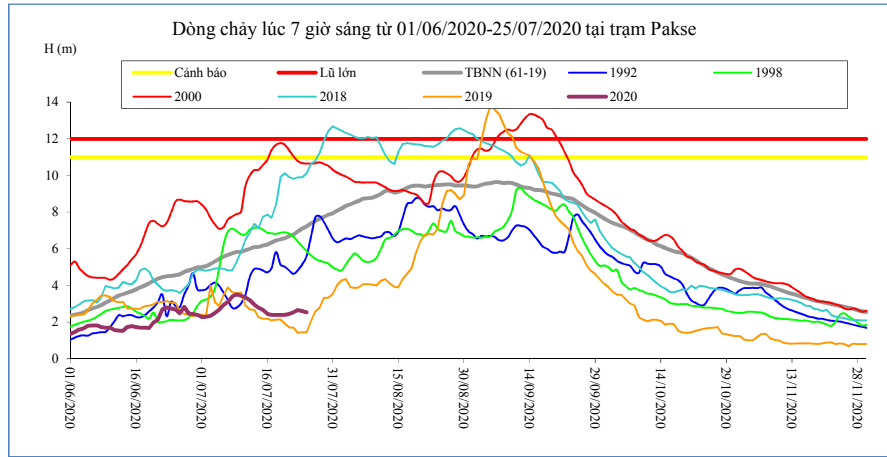
T. gian	H(m)	W(tỷ m <sup>3</sup> )
11/07/20	2,01	15,06
12/07/20	2,00	15,51
13/07/20	2,00	15,94
14/07/20	1,98	16,35
15/07/20	1,96	16,75
16/07/20	1,93	17,14
17/07/20	1,93	17,54
18/07/20	1,92	17,93
19/07/20	1,90	18,34
20/07/20	1,88	18,77
21/07/20	1,95	19,20
22/07/20	1,95	19,63
23/07/20	1,96	20,06
24/07/20	1,95	20,50
<b>25/07/20</b>	<b>1,94</b>	<b>20,94</b>

**Khong Chiam**



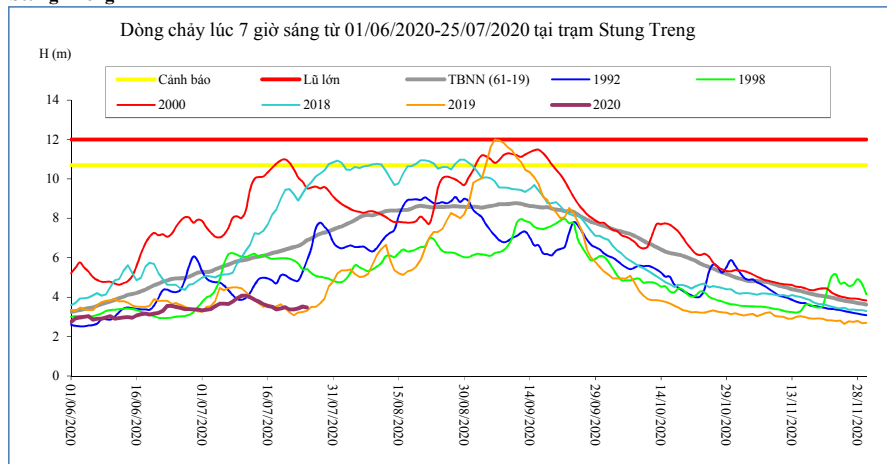
T. gian	H(m)	W(tỷ m <sup>3</sup> )
11/07/20	4,64	16,70
12/07/20	4,42	17,28
13/07/20	4,19	17,81
14/07/20	3,98	18,30
15/07/20	3,78	18,76
16/07/20	3,60	19,20
17/07/20	3,59	19,63
18/07/20	3,60	20,06
19/07/20	3,57	20,49
20/07/20	3,59	20,92
21/07/20	3,63	21,35
22/07/20	3,73	21,81
23/07/20	3,85	22,28
24/07/20	3,83	22,75
<b>25/07/20</b>	<b>3,78</b>	<b>23,21</b>

**Pakse**



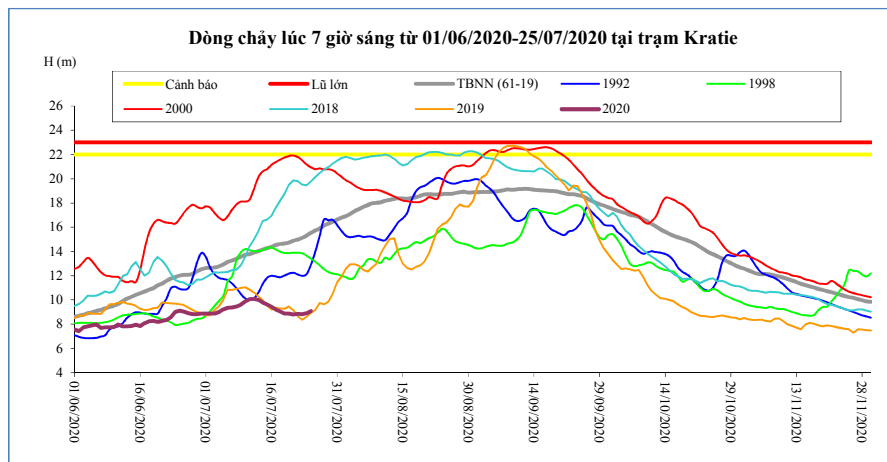
T. gian	H(m)	W(tỷ m <sup>3</sup> )
11/07/20	3,36	16,58
12/07/20	3,20	17,16
13/07/20	2,95	17,70
14/07/20	2,80	18,21
15/07/20	2,66	18,69
16/07/20	2,44	19,12
17/07/20	2,40	19,56
18/07/20	2,40	19,99
19/07/20	2,40	20,42
20/07/20	2,40	20,85
21/07/20	2,44	21,29
22/07/20	2,54	21,75
23/07/20	2,66	22,23
24/07/20	2,60	22,69
<b>25/07/20</b>	<b>2,54</b>	<b>23,15</b>

**Stung Treng**



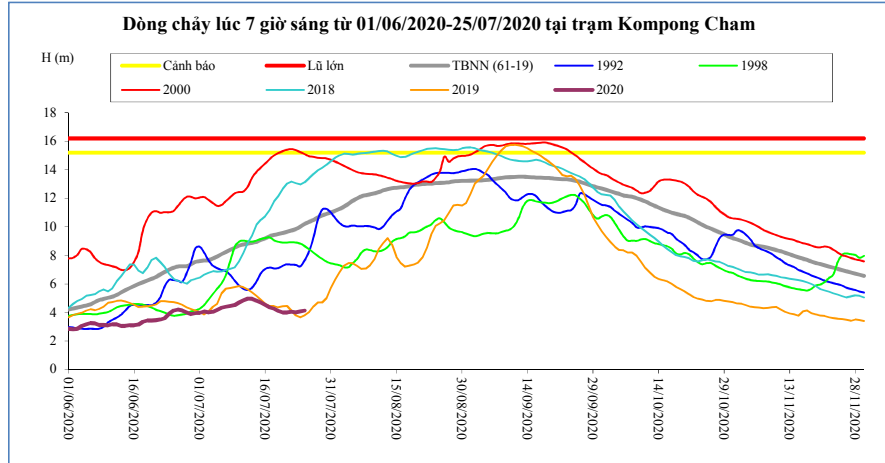
T. gian	H(m)	W(tỷ m <sup>3</sup> )
11/07/20	4,07	17,74
12/07/20	3,99	18,42
13/07/20	3,87	19,07
14/07/20	3,76	19,70
15/07/20	3,65	20,29
16/07/20	3,55	20,85
17/07/20	3,50	21,38
18/07/20	3,38	21,89
19/07/20	3,43	22,37
20/07/20	3,49	22,86
21/07/20	3,38	23,33
22/07/20	3,37	23,81
23/07/20	3,42	24,30
24/07/20	3,53	24,79
<b>25/07/20</b>	<b>3,48</b>	<b>25,30</b>

**Kratie**



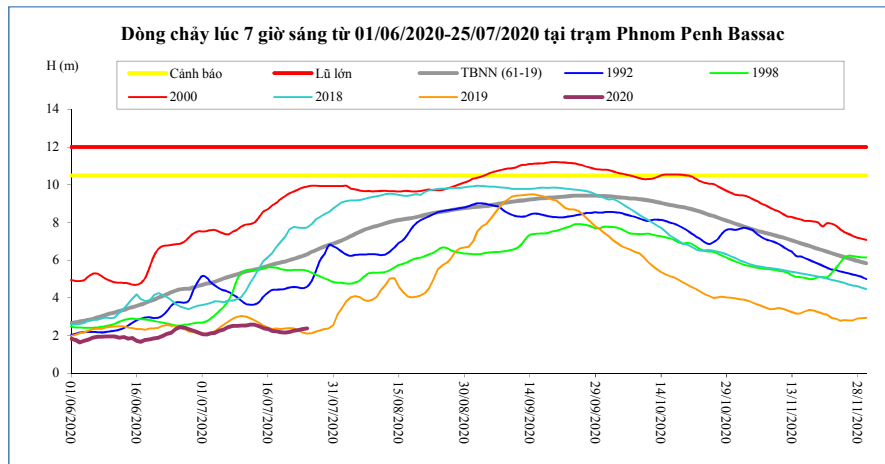
T. gian	H(m)	W(tỷ m <sup>3</sup> )
11/07/20	10,07	17,89
12/07/20	10,10	18,58
13/07/20	10,00	19,26
14/07/20	9,79	19,89
15/07/20	9,64	20,50
16/07/20	9,42	21,08
17/07/20	9,21	21,62
18/07/20	9,06	22,14
19/07/20	8,87	22,63
20/07/20	8,89	23,12
21/07/20	8,80	23,60
22/07/20	8,85	24,09
23/07/20	8,82	24,57
24/07/20	8,90	25,06
<b>25/07/20</b>	<b>9,10</b>	<b>25,59</b>

**Kompong Cham**



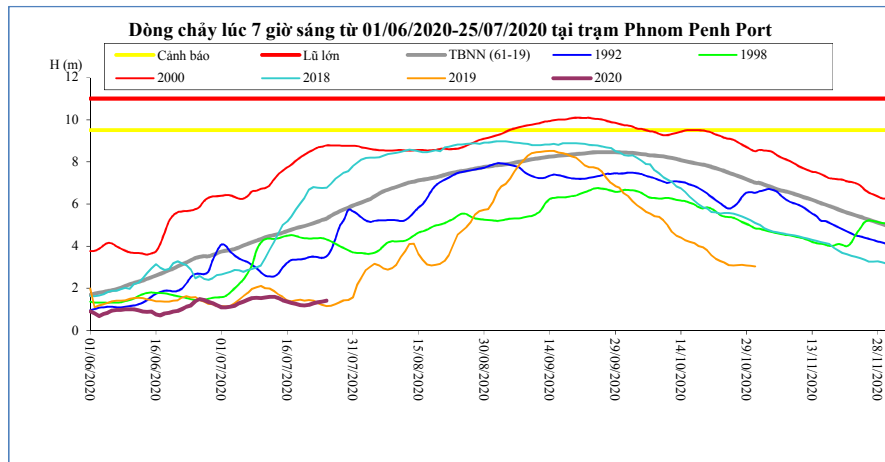
T. gian	H(m)	Hbq(m)
11/07/20	4,85	8,76
12/07/20	4,97	8,83
13/07/20	4,95	8,88
14/07/20	4,82	8,95
15/07/20	4,68	9,08
16/07/20	4,54	9,19
17/07/20	4,36	9,33
18/07/20	4,26	9,43
19/07/20	4,10	9,49
20/07/20	4,00	9,57
21/07/20	4,00	9,65
22/07/20	4,04	9,74
23/07/20	4,00	9,85
24/07/20	4,06	10,01
<b>25/07/20</b>	<b>4,14</b>	<b>10,20</b>

**Phnom Penh Bassac**



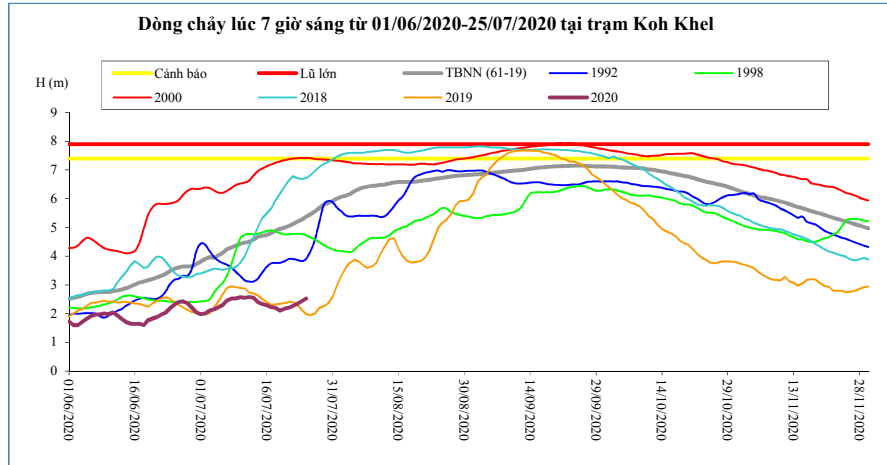
T. gian	H(m)	Hbq(m)
11/07/20	2,54	5,40
12/07/20	2,58	5,45
13/07/20	2,58	5,50
14/07/20	2,51	5,56
15/07/20	2,41	5,63
16/07/20	2,36	5,69
17/07/20	2,26	5,77
18/07/20	2,23	5,82
19/07/20	2,18	5,88
20/07/20	2,16	5,93
21/07/20	2,20	6,01
22/07/20	2,27	6,07
23/07/20	2,31	6,14
24/07/20	2,35	6,22
<b>25/07/20</b>	<b>2,39</b>	<b>6,32</b>

**Phnom Penh Port**



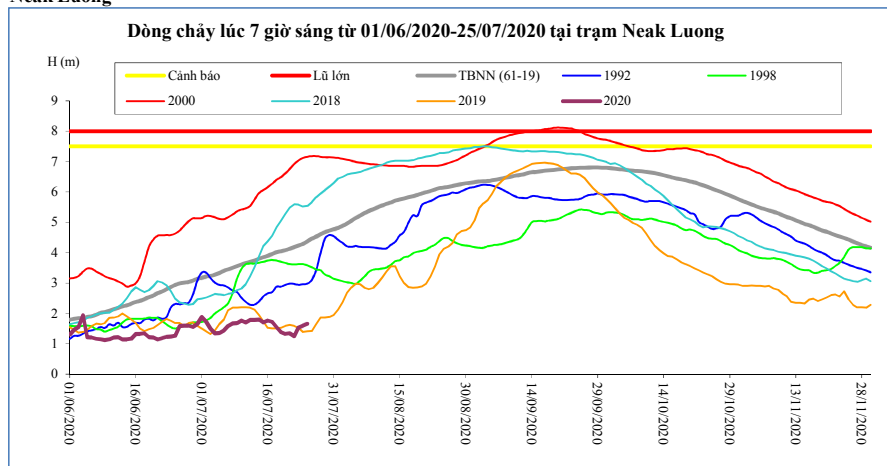
T. gian	H(m)	Hbq(m)
11/07/20	1,56	4,42
12/07/20	1,60	4,48
13/07/20	1,60	4,52
14/07/20	1,53	4,58
15/07/20	1,43	4,64
16/07/20	1,37	4,71
17/07/20	1,30	4,79
18/07/20	1,26	4,85
19/07/20	1,20	4,90
20/07/20	1,18	4,96
21/07/20	1,22	5,02
22/07/20	1,29	5,08
23/07/20	1,33	5,16
24/07/20	1,37	5,24
<b>25/07/20</b>	<b>1,41</b>	<b>5,31</b>

**Koh Khel**



T. gian	H(m)	Hbq(m)
11/07/20	2,55	4,47
12/07/20	2,58	4,50
13/07/20	2,55	4,58
14/07/20	2,41	4,67
15/07/20	2,34	4,71
16/07/20	2,29	4,74
17/07/20	2,23	4,80
18/07/20	2,20	4,89
19/07/20	2,10	4,95
20/07/20	2,17	4,99
21/07/20	2,20	5,05
22/07/20	2,27	5,12
23/07/20	2,35	5,20
24/07/20	2,44	5,27
<b>25/07/20</b>	<b>2,53</b>	<b>5,38</b>

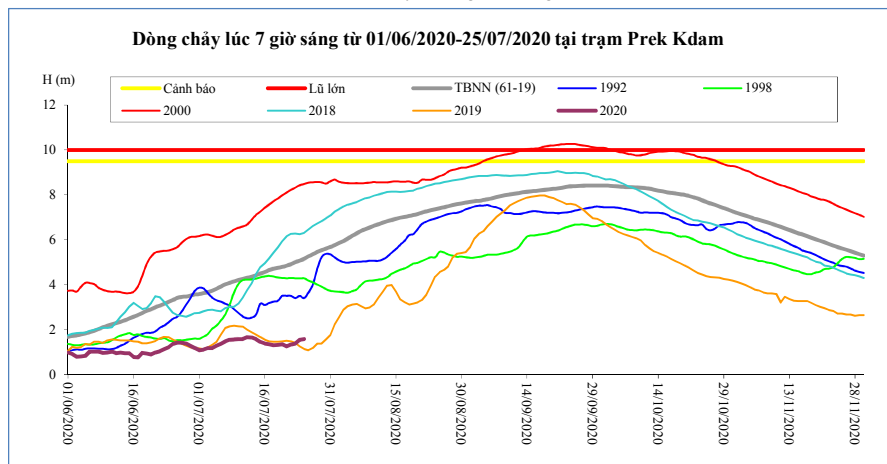
**Neak Luong**



T. gian	H(m)	Hbq(m)
11/07/20	1,70	3,66
12/07/20	1,78	3,70
13/07/20	1,78	3,74
14/07/20	1,80	3,79
15/07/20	1,70	3,85
16/07/20	1,76	3,90
17/07/20	1,72	3,96
18/07/20	1,54	4,01
19/07/20	1,38	4,05
20/07/20	1,32	4,08
21/07/20	1,34	4,13
22/07/20	1,25	4,18
23/07/20	1,53	4,24
24/07/20	1,59	4,29
<b>25/07/20</b>	<b>1,66</b>	<b>4,37</b>

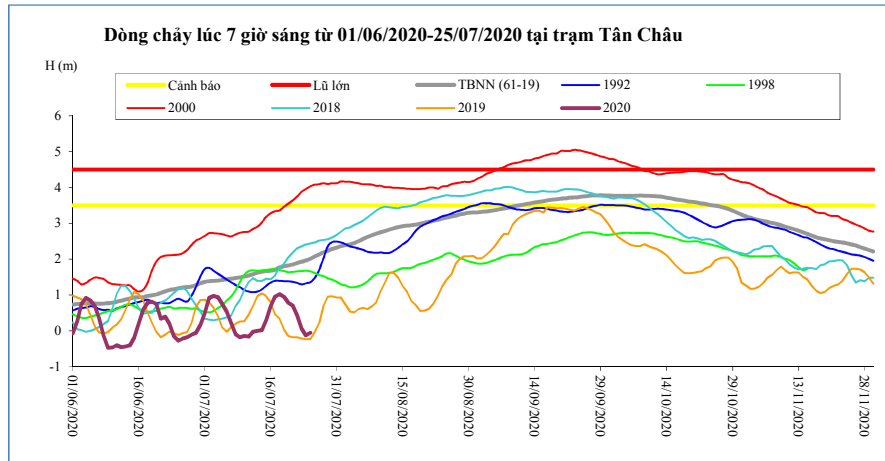
**Prek Kdam**

Biển Hồ chảy ra sông Mê Công.



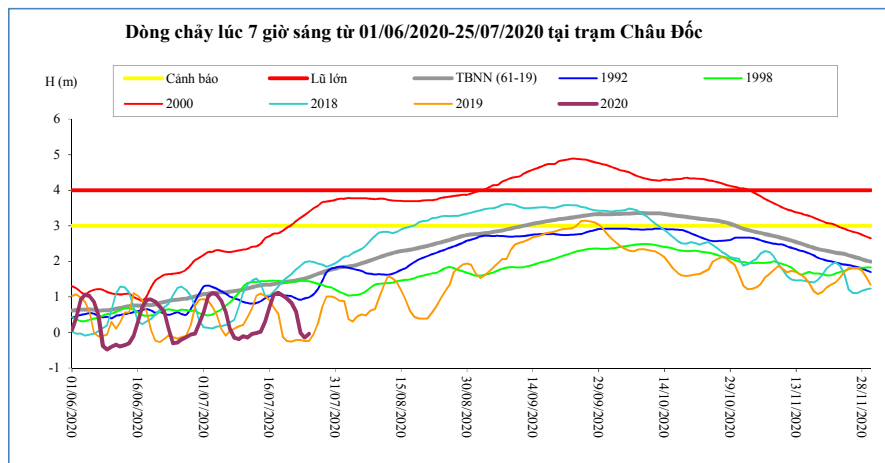
T. gian	H(m)	Biển Hồ W (tỷ m <sup>3</sup> )
11/07/20	1,58	0,45
12/07/20	1,66	0,45
13/07/20	1,64	0,45
14/07/20	1,57	0,45
15/07/20	1,45	0,45
16/07/20	1,38	0,45
17/07/20	1,35	0,45
18/07/20	1,31	0,45
19/07/20	1,32	0,44
20/07/20	1,35	0,44
21/07/20	1,25	0,44
22/07/20	1,34	0,44
23/07/20	1,37	0,44
24/07/20	1,55	0,44
<b>25/07/20</b>	<b>1,57</b>	<b>0,44</b>

**Tân Châu**



T. gian	H(m)	Hbq(m)
11/07/20	-0,16	1,55
12/07/20	-0,02	1,58
13/07/20	0,00	1,63
14/07/20	0,02	1,65
15/07/20	0,32	1,67
16/07/20	0,68	1,68
17/07/20	0,96	1,71
18/07/20	1,03	1,77
19/07/20	0,95	1,80
20/07/20	0,79	1,83
21/07/20	0,71	1,86
22/07/20	0,43	1,89
23/07/20	0,07	1,93
24/07/20	-0,12	1,97
<b>25/07/20</b>	<b>-0,05</b>	<b>2,01</b>

**Châu Đốc**



T. gian	H(m)	Hbq(m)
11/07/20	-0,14	1,24
12/07/20	-0,04	1,27
13/07/20	-0,02	1,31
14/07/20	0,02	1,33
15/07/20	0,31	1,34
16/07/20	0,72	1,35
17/07/20	1,06	1,37
18/07/20	1,12	1,39
19/07/20	1,04	1,41
20/07/20	0,96	1,42
21/07/20	0,84	1,44
22/07/20	0,60	1,46
23/07/20	-0,01	1,49
24/07/20	-0,14	1,52
<b>25/07/20</b>	<b>-0,03</b>	<b>1,55</b>

**Ghi chú:**

-: Không có số liệu

H(m): Mức nước lúc 7 giờ sáng lấy theo số liệu thực đo của MRC. W (tỷ m<sup>3</sup>): Ước tính của Viện Quy hoạch Thủy lợi Miền Nam. W là tổng lượng nước kể từ ngày 1 tháng 6. Riêng Biển Hồ là dung tích hiện tại. Hbq (m): Mức nước trung bình nhiều năm.



### BẢN ĐỒ VỊ TRÍ CÁC TRẠM ĐỌC DÒNG CHÍNH MÊ CÔNG

