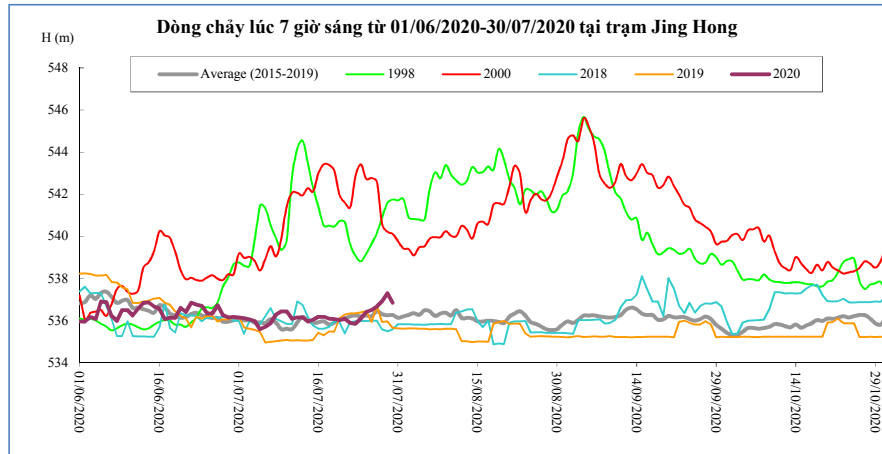


DIỄN BIẾN DÒNG CHẢY TẠI CÁC TRẠM TRÊN DÒNG CHÍNH SÔNG MÊ CÔNG
Dòng chảy lúc 7 giờ sáng từ 01/06/2020-30/07/2020

Jing Hong

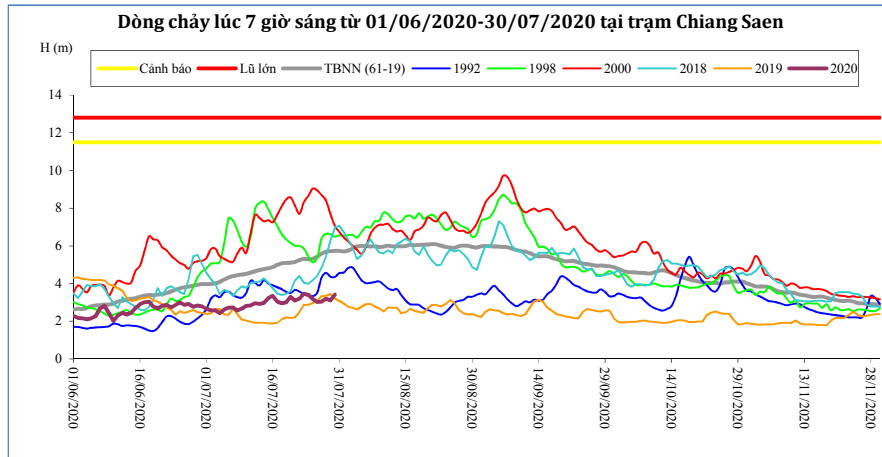
Hôm nay

30/07/20



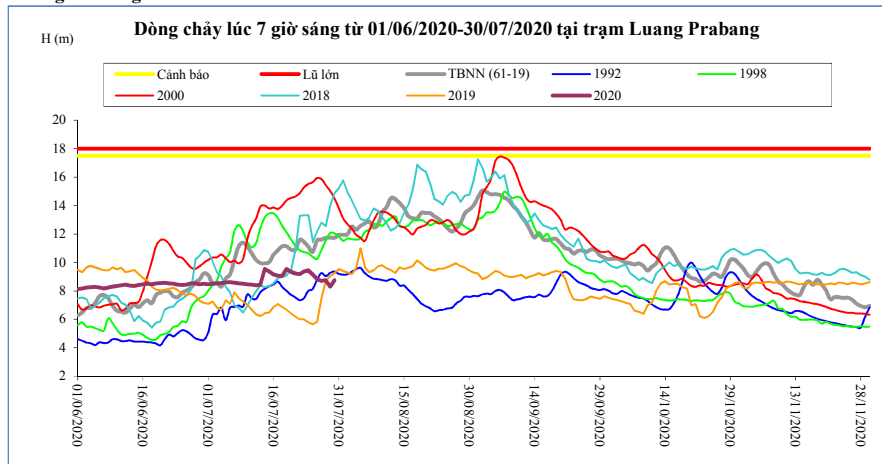
T. gian	H(m)	W(tỷ m ³)
16/07/20	536,19	4,71
17/07/20	536,19	4,80
18/07/20	536,10	4,89
19/07/20	536,08	4,98
20/07/20	536,04	5,07
21/07/20	536,10	5,16
22/07/20	535,90	5,25
23/07/20	535,85	5,33
24/07/20	536,10	5,42
25/07/20	536,42	5,52
26/07/20	536,51	5,64
27/07/20	536,67	5,76
28/07/20	536,91	5,89
29/07/20	537,31	6,05
30/07/20	536,86	6,18

Chiang Saen



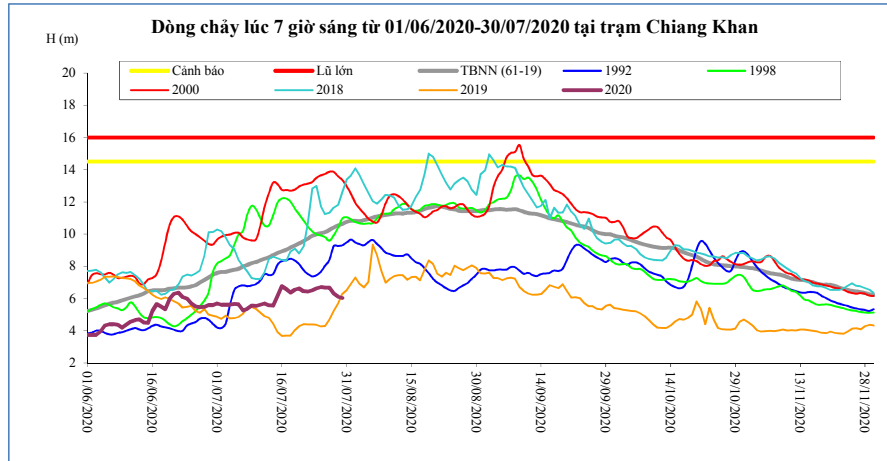
T. gian	H(m)	W(tỷ m ³)
16/07/20	3,35	6,22
17/07/20	3,04	6,38
18/07/20	2,95	6,53
19/07/20	3,01	6,69
20/07/20	3,30	6,87
21/07/20	3,09	7,03
22/07/20	3,19	7,21
23/07/20	3,46	7,40
24/07/20	3,40	7,59
25/07/20	3,17	7,76
26/07/20	3,02	7,92
27/07/20	3,04	8,08
28/07/20	3,19	8,25
29/07/20	3,10	8,42
30/07/20	3,42	8,61

Luang Prabang



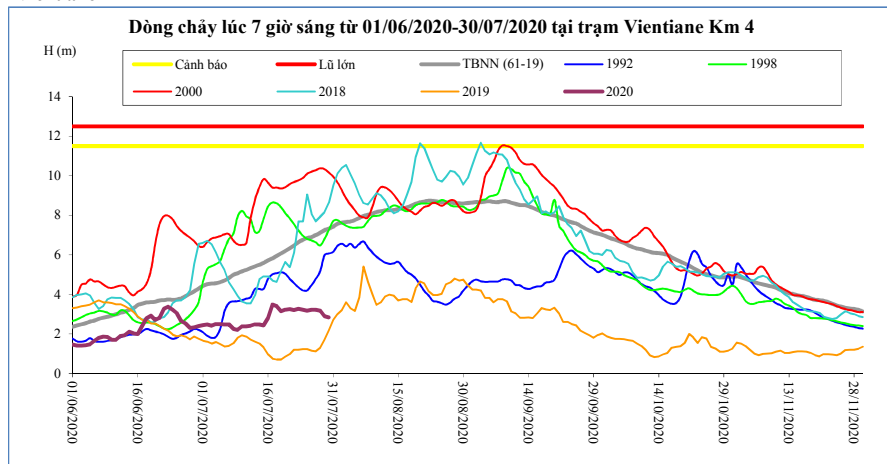
T. gian	H(m)	W(tỷ m ³)
16/07/20	9,15	19,51
17/07/20	9,07	19,99
18/07/20	9,04	20,46
19/07/20	9,54	20,99
20/07/20	9,33	21,49
21/07/20	9,23	21,98
22/07/20	9,18	22,47
23/07/20	9,35	22,97
24/07/20	9,45	23,49
25/07/20	9,15	23,97
26/07/20	8,85	24,43
27/07/20	8,70	24,87
28/07/20	8,75	25,32
29/07/20	8,30	25,73
30/07/20	8,76	26,18

Chiang Khan Vị trí sau hồ Xayabury



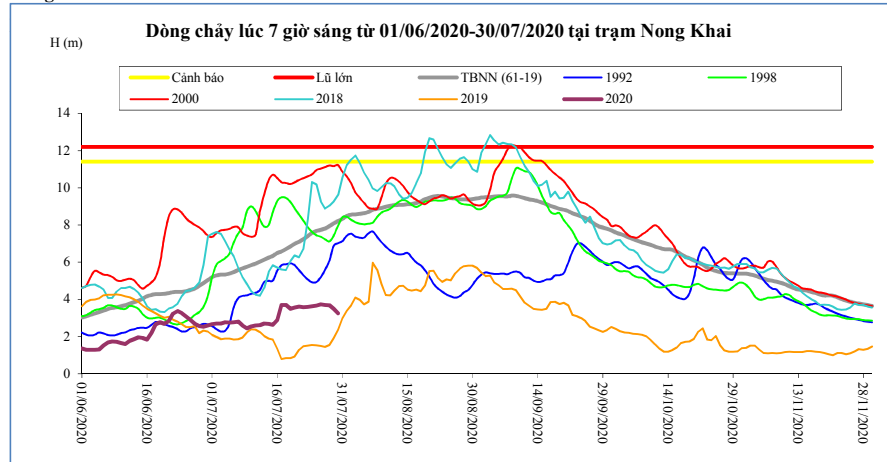
T. gian	H(m)	W(tỷ m ³)
16/07/20	6,77	8,97
17/07/20	6,60	9,26
18/07/20	6,38	9,53
19/07/20	6,56	9,81
20/07/20	6,63	10,10
21/07/20	6,45	10,38
22/07/20	6,43	10,65
23/07/20	6,52	10,94
24/07/20	6,63	11,23
25/07/20	6,72	11,52
26/07/20	6,68	11,82
27/07/20	6,68	12,11
28/07/20	6,32	12,38
29/07/20	6,12	12,63
30/07/20	6,04	12,87

Vientiane Km 4



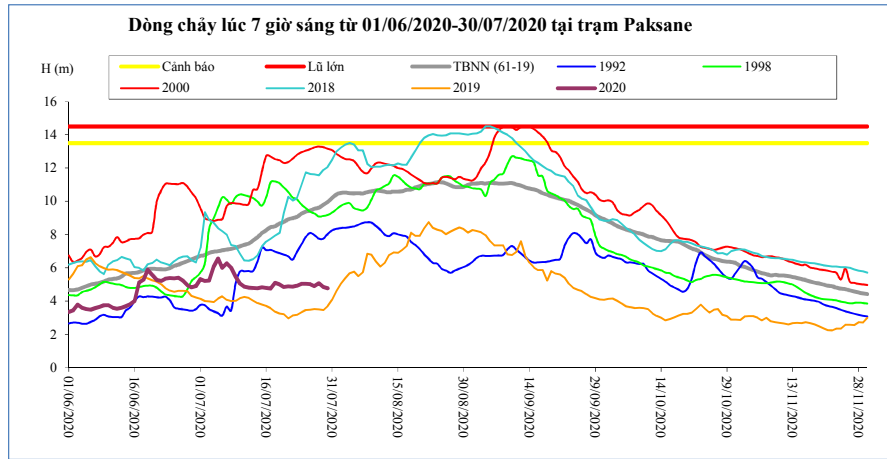
T. gian	H(m)	W(tỷ m ³)
16/07/20	2,80	9,84
17/07/20	3,48	10,13
18/07/20	3,40	10,42
19/07/20	3,14	10,72
20/07/20	3,23	11,02
21/07/20	3,26	11,32
22/07/20	3,20	11,61
23/07/20	3,28	11,91
24/07/20	3,22	12,21
25/07/20	3,18	12,53
26/07/20	3,22	12,84
27/07/20	3,22	13,15
28/07/20	3,18	13,43
29/07/20	2,90	13,71
30/07/20	2,84	13,97

Nong Khai



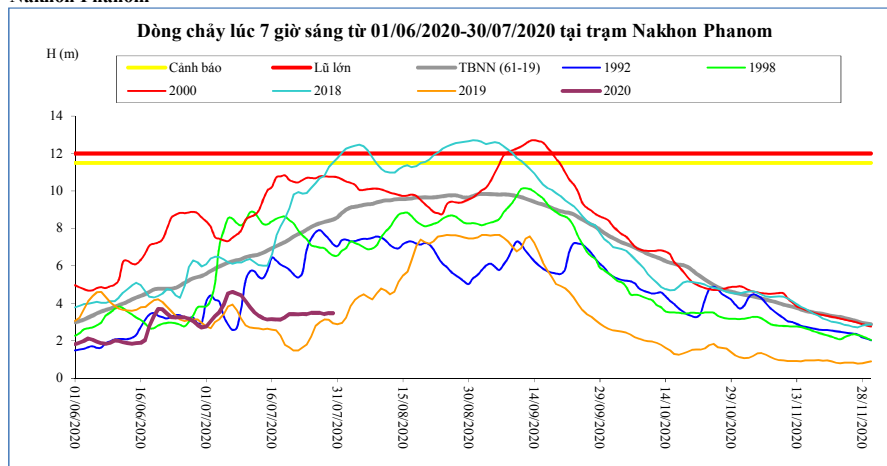
T. gian	H(m)	W(tỷ m ³)
16/07/20	2,90	10,21
17/07/20	3,70	10,52
18/07/20	3,71	10,81
19/07/20	3,49	11,11
20/07/20	3,56	11,42
21/07/20	3,62	11,73
22/07/20	3,58	12,03
23/07/20	3,60	12,33
24/07/20	3,63	12,64
25/07/20	3,66	12,96
26/07/20	3,73	13,28
27/07/20	3,70	13,60
28/07/20	3,68	13,89
29/07/20	3,50	14,17
30/07/20	3,25	14,45

Paksane



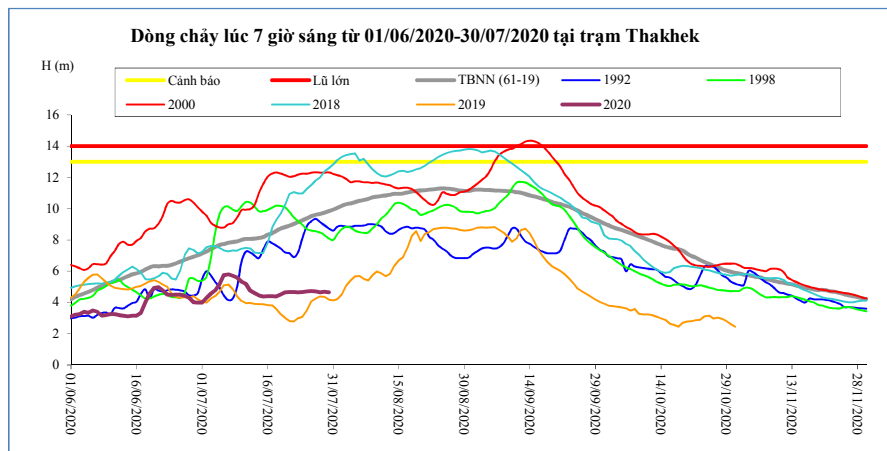
T. gian	H(m)	W(tỷ m ³)
16/07/20	4,79	13,44
17/07/20	4,75	13,79
18/07/20	5,10	14,13
19/07/20	5,00	14,49
20/07/20	4,85	14,86
21/07/20	4,89	15,23
22/07/20	4,88	15,59
23/07/20	4,93	15,96
24/07/20	5,04	16,33
25/07/20	5,05	16,71
26/07/20	5,02	17,09
27/07/20	4,91	17,47
28/07/20	5,08	17,83
29/07/20	4,85	18,19
30/07/20	4,78	18,55

Nakhon Phanom



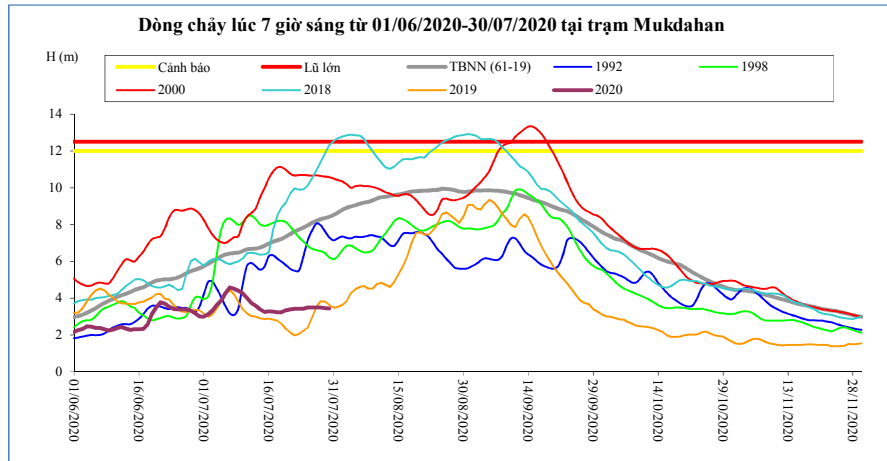
T. gian	H(m)	W(tỷ m ³)
16/07/20	3,15	17,28
17/07/20	3,14	17,68
18/07/20	3,14	18,08
19/07/20	3,25	18,50
20/07/20	3,42	18,94
21/07/20	3,43	19,38
22/07/20	3,41	19,82
23/07/20	3,42	20,26
24/07/20	3,43	20,71
25/07/20	3,49	21,16
26/07/20	3,50	21,61
27/07/20	3,49	22,07
28/07/20	3,43	22,51
29/07/20	3,48	22,96
30/07/20	3,47	23,41

Thakhek



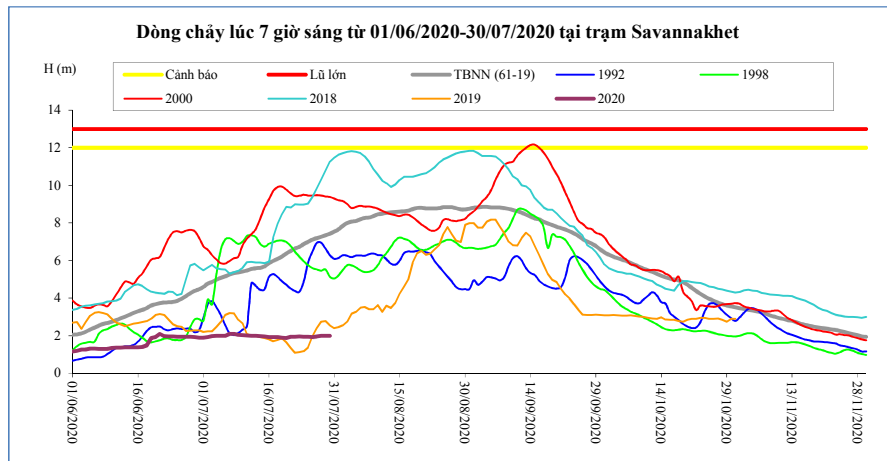
T. gian	H(m)	W(tỷ m ³)
16/07/20	4,40	16,93
17/07/20	4,40	17,33
18/07/20	4,39	17,72
19/07/20	4,50	18,12
20/07/20	4,65	18,55
21/07/20	4,67	18,98
22/07/20	4,67	19,41
23/07/20	4,65	19,83
24/07/20	4,67	20,26
25/07/20	4,72	20,70
26/07/20	4,74	21,14
27/07/20	4,72	21,58
28/07/20	4,66	22,01
29/07/20	4,70	22,44
30/07/20	4,66	22,87

Mukdahan



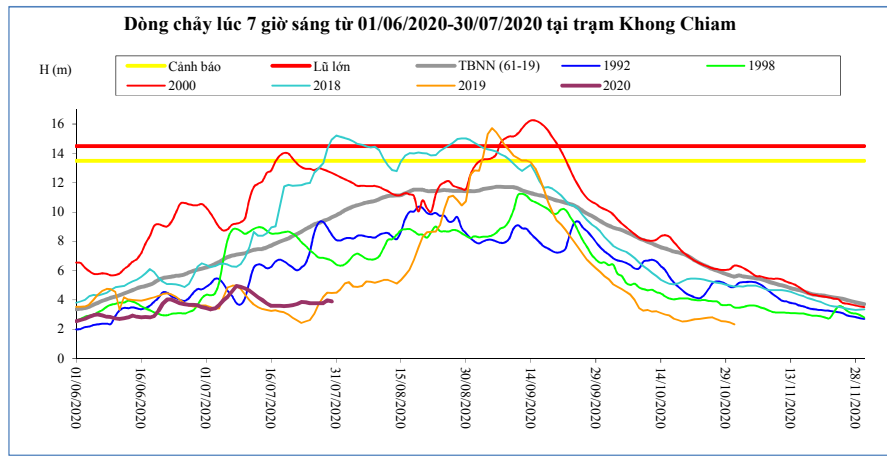
T. gian	H(m)	W(tỷ m ³)
16/07/20	3,28	17,13
17/07/20	3,26	17,53
18/07/20	3,22	17,92
19/07/20	3,23	18,33
20/07/20	3,33	18,76
21/07/20	3,38	19,19
22/07/20	3,42	19,62
23/07/20	3,42	20,05
24/07/20	3,42	20,48
25/07/20	3,48	20,92
26/07/20	3,48	21,36
27/07/20	3,49	21,80
28/07/20	3,48	22,23
29/07/20	3,46	22,67
30/07/20	3,44	23,11

Savannakhet



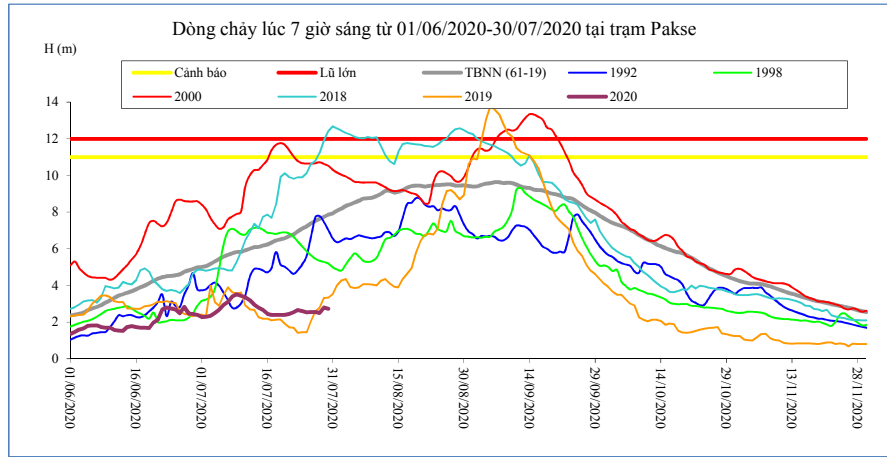
T. gian	H(m)	W(tỷ m ³)
16/07/20	1,93	17,14
17/07/20	1,93	17,54
18/07/20	1,92	17,93
19/07/20	1,90	18,34
20/07/20	1,88	18,77
21/07/20	1,95	19,20
22/07/20	1,95	19,63
23/07/20	1,96	20,06
24/07/20	1,95	20,50
25/07/20	1,94	20,94
26/07/20	1,92	21,38
27/07/20	1,96	21,82
28/07/20	2,00	22,25
29/07/20	2,00	22,69
30/07/20	1,99	23,12

Khong Chiam



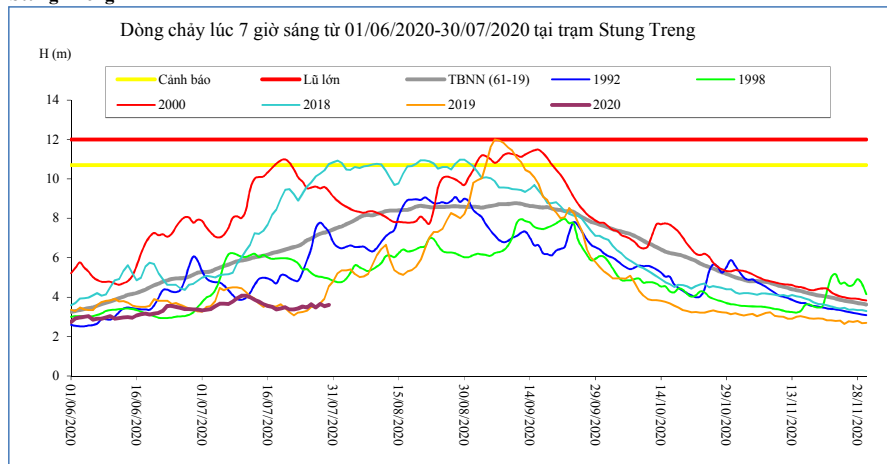
T. gian	H(m)	W(tỷ m ³)
16/07/20	3,60	19,20
17/07/20	3,59	19,63
18/07/20	3,60	20,06
19/07/20	3,57	20,49
20/07/20	3,59	20,92
21/07/20	3,63	21,35
22/07/20	3,73	21,81
23/07/20	3,85	22,28
24/07/20	3,83	22,75
25/07/20	3,78	23,21
26/07/20	3,76	23,67
27/07/20	3,76	24,13
28/07/20	3,77	24,59
29/07/20	3,96	25,08
30/07/20	3,89	25,56

Pakse



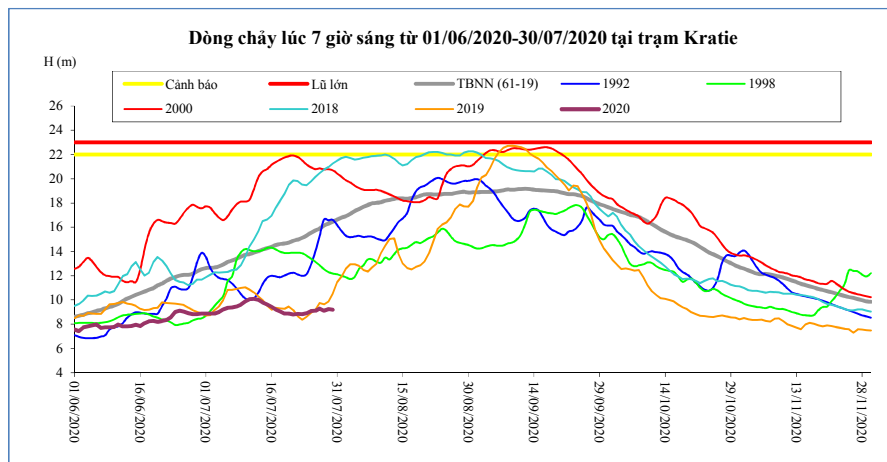
T. gian	H(m)	W(tỷ m ³)
16/07/20	2,44	19,12
17/07/20	2,40	19,56
18/07/20	2,40	19,99
19/07/20	2,40	20,42
20/07/20	2,40	20,85
21/07/20	2,44	21,29
22/07/20	2,54	21,75
23/07/20	2,66	22,23
24/07/20	2,60	22,69
25/07/20	2,54	23,15
26/07/20	2,56	23,61
27/07/20	2,56	24,07
28/07/20	2,50	24,52
29/07/20	2,80	25,03
30/07/20	2,72	25,52

Stung Treng



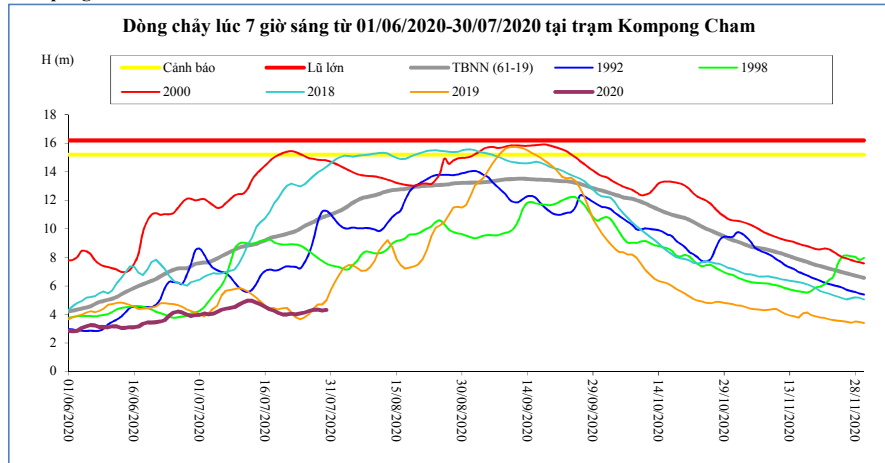
T. gian	H(m)	W(tỷ m ³)
16/07/20	3,55	20,85
17/07/20	3,50	21,38
18/07/20	3,38	21,89
19/07/20	3,43	22,37
20/07/20	3,49	22,86
21/07/20	3,38	23,33
22/07/20	3,37	23,81
23/07/20	3,42	24,30
24/07/20	3,53	24,79
25/07/20	3,48	25,30
26/07/20	3,63	25,82
27/07/20	3,47	26,37
28/07/20	3,65	26,89
29/07/20	3,54	27,43
30/07/20	3,60	27,96

Kratie



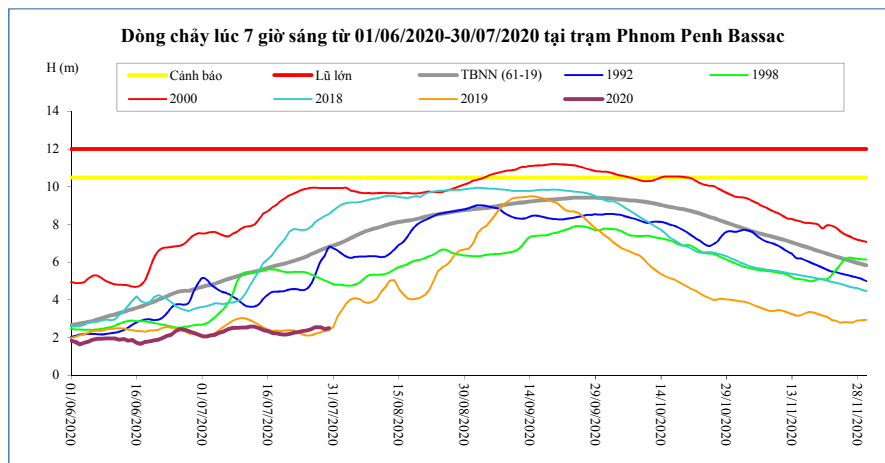
T. gian	H(m)	W(tỷ m ³)
16/07/20	9,42	21,08
17/07/20	9,21	21,62
18/07/20	9,06	22,14
19/07/20	8,87	22,63
20/07/20	8,89	23,12
21/07/20	8,80	23,60
22/07/20	8,85	24,09
23/07/20	8,82	24,57
24/07/20	8,90	25,06
25/07/20	9,10	25,59
26/07/20	9,11	26,11
27/07/20	9,31	26,67
28/07/20	9,11	27,20
29/07/20	9,25	27,74
30/07/20	9,19	28,28

Kompong Cham



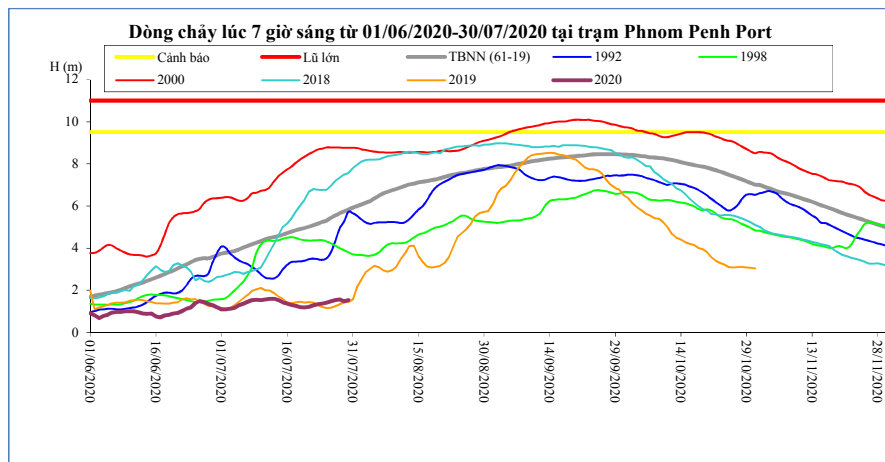
T. gian	H(m)	Hbq(m)
16/07/20	4,54	9,19
17/07/20	4,36	9,33
18/07/20	4,26	9,43
19/07/20	4,10	9,49
20/07/20	4,00	9,57
21/07/20	4,00	9,65
22/07/20	4,04	9,74
23/07/20	4,00	9,85
24/07/20	4,06	10,01
25/07/20	4,14	10,20
26/07/20	4,24	10,35
27/07/20	4,30	10,48
28/07/20	4,33	10,66
29/07/20	4,27	10,79
30/07/20	4,31	10,90

Phnom Penh Bassac



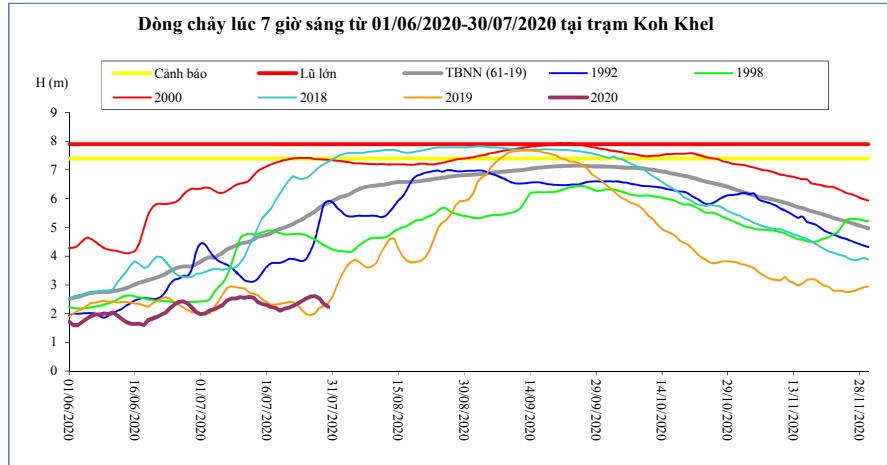
T. gian	H(m)	Hbq(m)
16/07/20	2,36	5,69
17/07/20	2,26	5,77
18/07/20	2,23	5,82
19/07/20	2,18	5,88
20/07/20	2,16	5,93
21/07/20	2,20	6,01
22/07/20	2,27	6,07
23/07/20	2,31	6,14
24/07/20	2,35	6,22
25/07/20	2,39	6,32
26/07/20	2,46	6,44
27/07/20	2,55	6,53
28/07/20	2,56	6,63
29/07/20	2,46	6,73
30/07/20	2,50	6,81

Phnom Penh Port



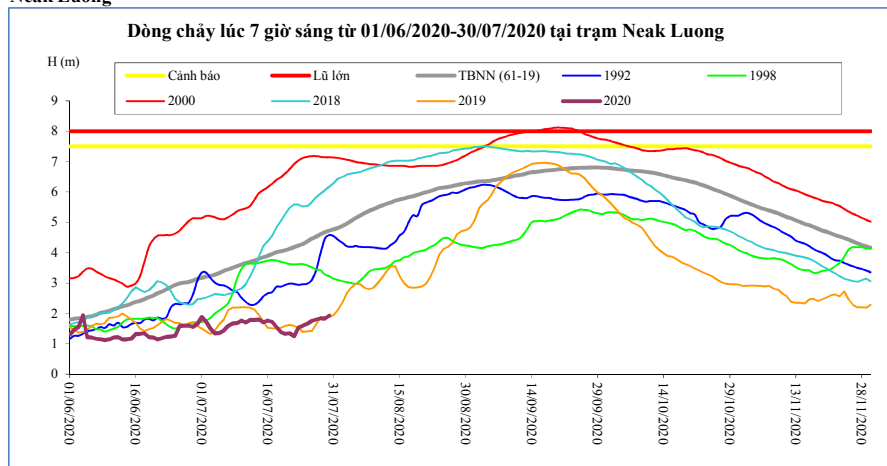
T. gian	H(m)	Hbq(m)
16/07/20	1,37	4,71
17/07/20	1,30	4,79
18/07/20	1,26	4,85
19/07/20	1,20	4,90
20/07/20	1,18	4,96
21/07/20	1,22	5,02
22/07/20	1,29	5,08
23/07/20	1,33	5,16
24/07/20	1,37	5,24
25/07/20	1,41	5,31
26/07/20	1,47	5,44
27/07/20	1,53	5,55
28/07/20	1,56	5,65
29/07/20	1,48	5,74
30/07/20	1,53	5,83

Koh Khel



T. gian	H(m)	Hbq(m)
16/07/20	2,29	4,74
17/07/20	2,23	4,80
18/07/20	2,20	4,89
19/07/20	2,10	4,95
20/07/20	2,17	4,99
21/07/20	2,20	5,05
22/07/20	2,27	5,12
23/07/20	2,35	5,20
24/07/20	2,44	5,27
25/07/20	2,53	5,38
26/07/20	2,60	5,46
27/07/20	2,61	5,56
28/07/20	2,54	5,68
29/07/20	2,34	5,79
30/07/20	2,24	5,86

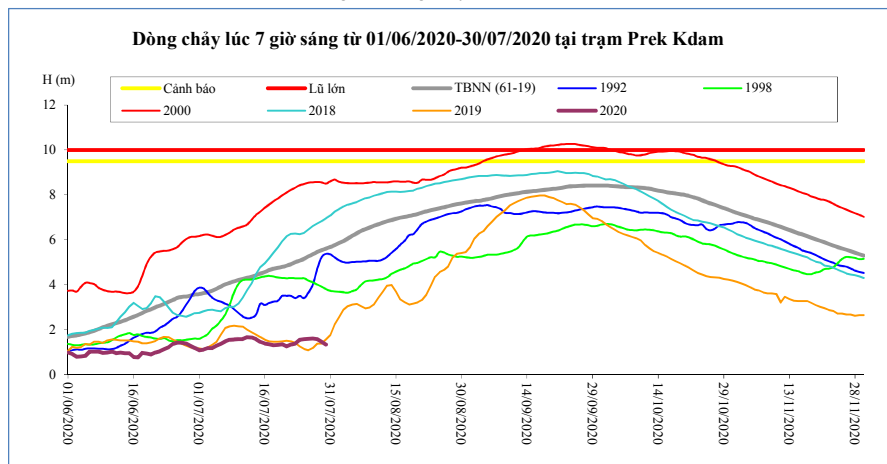
Neak Luong



T. gian	H(m)	Hbq(m)
16/07/20	1,76	3,90
17/07/20	1,72	3,96
18/07/20	1,54	4,01
19/07/20	1,38	4,05
20/07/20	1,32	4,08
21/07/20	1,34	4,13
22/07/20	1,25	4,18
23/07/20	1,53	4,24
24/07/20	1,59	4,29
25/07/20	1,66	4,37
26/07/20	1,75	4,46
27/07/20	1,79	4,53
28/07/20	1,84	4,61
29/07/20	1,83	4,68
30/07/20	1,93	4,72

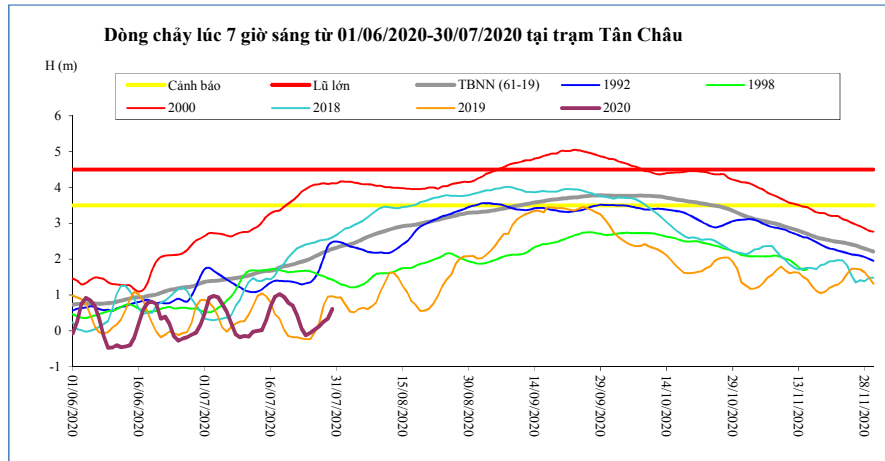
Prek Kdam

Sông Mê Công chảy vào Biển Hồ.



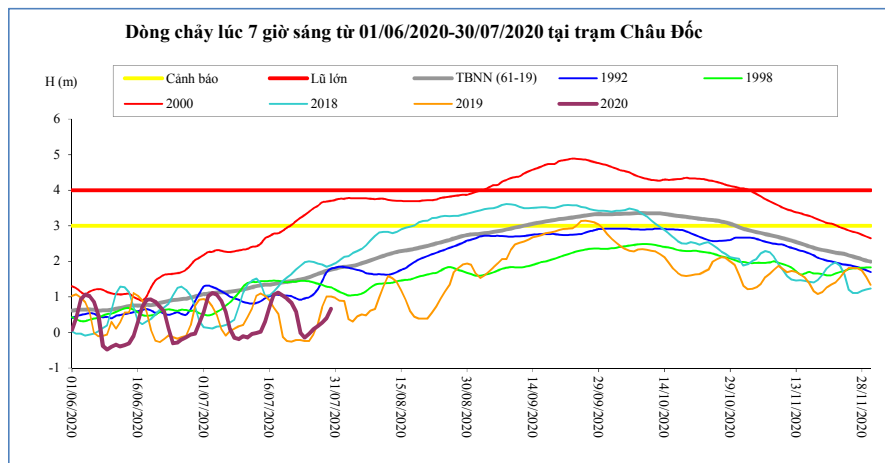
T. gian	H(m)	Biển Hồ W (tỷ m ³)
16/07/20	1,38	0,45
17/07/20	1,35	0,45
18/07/20	1,31	0,45
19/07/20	1,32	0,44
20/07/20	1,35	0,44
21/07/20	1,25	0,44
22/07/20	1,34	0,44
23/07/20	1,37	0,44
24/07/20	1,55	0,44
25/07/20	1,57	0,44
26/07/20	1,59	0,44
27/07/20	1,60	0,44
28/07/20	1,58	0,44
29/07/20	1,46	0,44
30/07/20	1,34	0,44

Tân Châu



T. gian	H(m)	Hbq(m)
16/07/20	0,68	1,68
17/07/20	0,96	1,71
18/07/20	1,03	1,77
19/07/20	0,95	1,80
20/07/20	0,79	1,83
21/07/20	0,71	1,86
22/07/20	0,43	1,89
23/07/20	0,07	1,93
24/07/20	-0,12	1,97
25/07/20	-0,05	2,01
26/07/20	0,04	2,08
27/07/20	0,13	2,14
28/07/20	0,25	2,19
29/07/20	0,34	2,23
30/07/20	0,61	2,29

Châu Đốc



T. gian	H(m)	Hbq(m)
16/07/20	0,72	1,35
17/07/20	1,06	1,37
18/07/20	1,12	1,39
19/07/20	1,04	1,41
20/07/20	0,96	1,42
21/07/20	0,84	1,44
22/07/20	0,60	1,46
23/07/20	-0,01	1,49
24/07/20	-0,14	1,52
25/07/20	-0,03	1,55
26/07/20	0,09	1,60
27/07/20	0,17	1,64
28/07/20	0,28	1,69
29/07/20	0,41	1,74
30/07/20	0,67	1,77

Ghi chú:

-: Không có số liệu

H(m): Mức nước lúc 7 giờ sáng lấy theo số liệu thực đo của MRC. W (tỷ m³): Ước tính của Viện Quy hoạch Thủy lợi Miền Nam. W là tổng lượng nước kể từ ngày 1 tháng 6. Riêng Biển Hồ là dung tích hiện tại. Hbq (m): Mức nước trung bình nhiều năm.

BẢN ĐỒ VỊ TRÍ CÁC TRẠM ĐỌC DÒNG CHÍNH MÊ CÔNG

