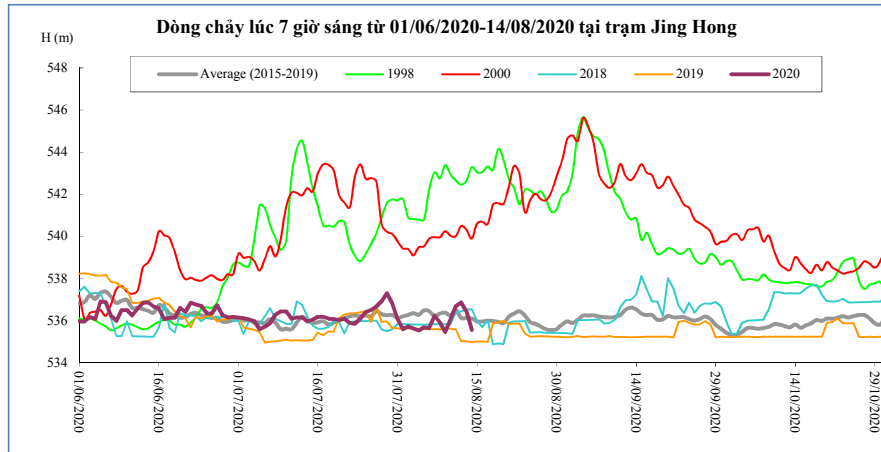


**DIỄN BIẾN DÒNG CHẢY TẠI CÁC TRẠM TRÊN DÒNG CHÍNH SÔNG MÊ CÔNG**  
**Dòng chảy lúc 7 giờ sáng từ 01/06/2020-14/08/2020**

**Jing Hong**

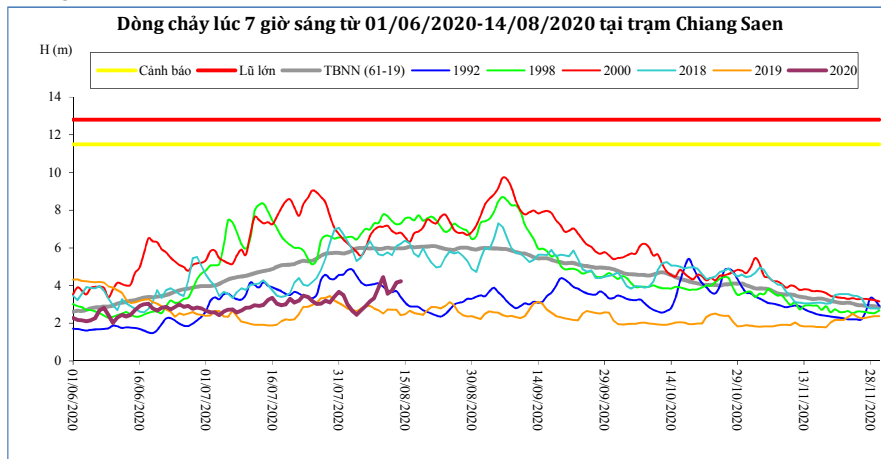
Hôm nay

14/08/20



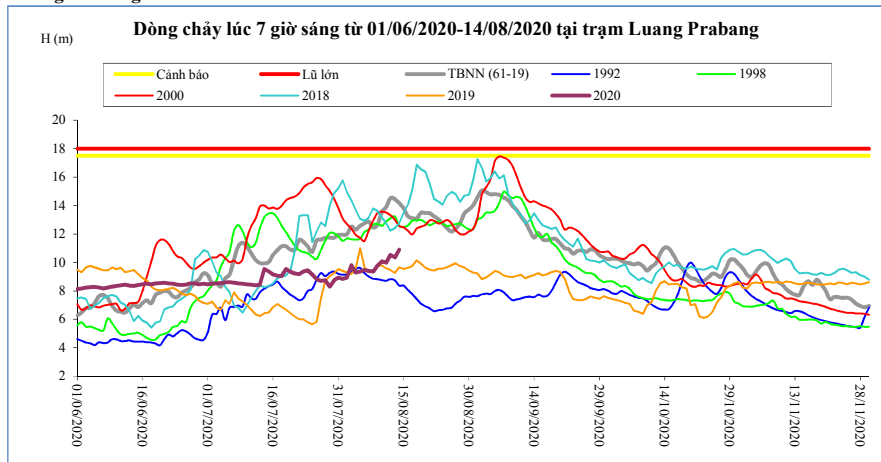
T. gian	H(m)	W(tỷ m <sup>3</sup> )
31/07/20	536,10	6,27
01/08/20	535,59	6,34
02/08/20	535,73	6,42
03/08/20	535,62	6,49
04/08/20	535,54	6,55
05/08/20	535,68	6,63
06/08/20	535,66	6,70
07/08/20	536,24	6,80
08/08/20	535,92	6,88
09/08/20	535,46	6,95
10/08/20	536,07	7,04
11/08/20	536,69	7,16
12/08/20	536,87	7,29
13/08/20	536,46	7,40
14/08/20	535,57	7,47

**Chiang Saen**



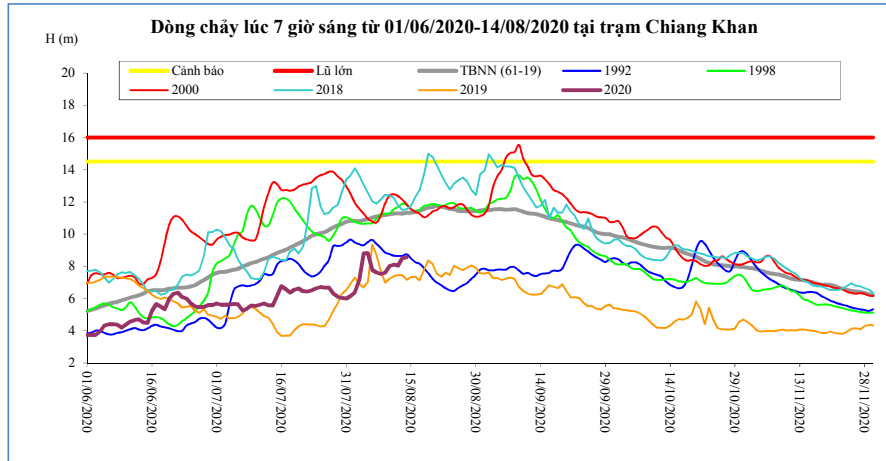
T. gian	H(m)	W(tỷ m <sup>3</sup> )
31/07/20	3,66	8,82
01/08/20	3,49	9,02
02/08/20	2,99	9,17
03/08/20	2,66	9,31
04/08/20	2,45	9,43
05/08/20	2,68	9,56
06/08/20	2,90	9,71
07/08/20	3,15	9,88
08/08/20	3,33	10,06
09/08/20	3,89	10,30
10/08/20	4,44	10,59
11/08/20	3,57	10,79
12/08/20	3,74	11,01
13/08/20	4,16	11,27
14/08/20	4,23	11,54

**Luang Prabang**



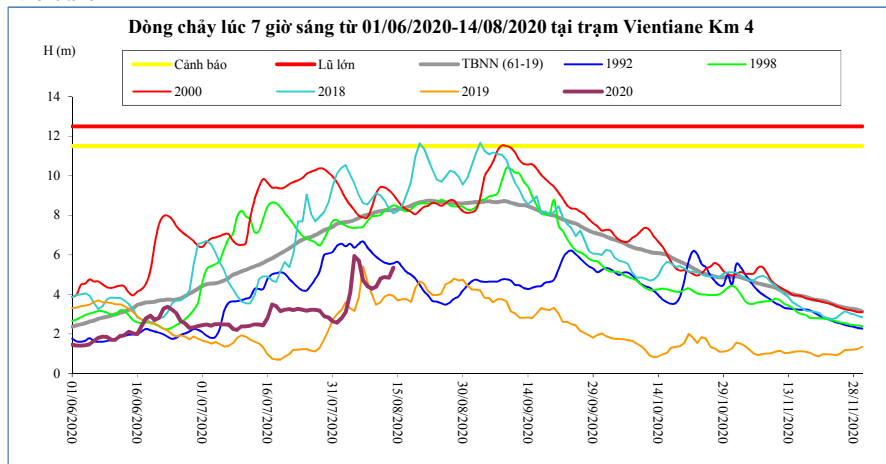
T. gian	H(m)	W(tỷ m <sup>3</sup> )
31/07/20	8,94	26,64
01/08/20	8,85	27,10
02/08/20	8,93	27,56
03/08/20	9,80	28,11
04/08/20	9,30	28,61
05/08/20	9,37	29,12
06/08/20	9,47	29,64
07/08/20	9,40	30,15
08/08/20	9,35	30,65
09/08/20	9,78	31,20
10/08/20	10,08	31,78
11/08/20	10,00	32,35
12/08/20	10,53	32,98
13/08/20	10,35	33,59
14/08/20	10,90	34,26

**Chiang Khan**      Vị trí sau hồ Xayabury



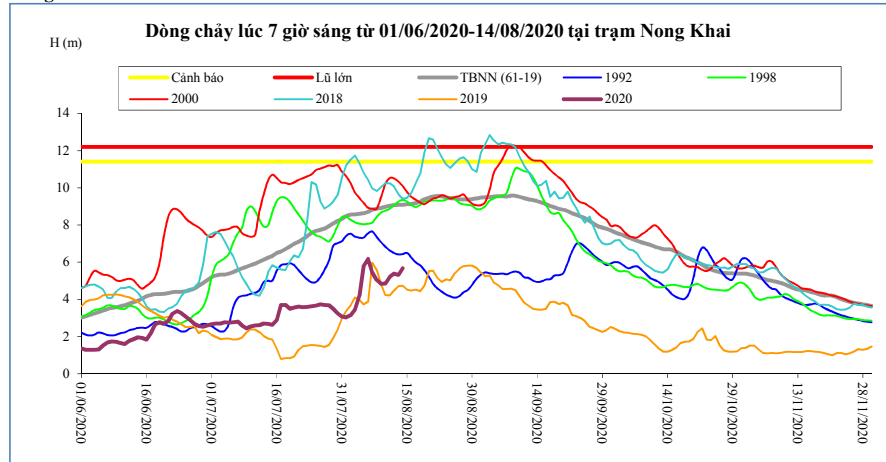
T. gian	H(m)	W(tỷ m <sup>3</sup> )
31/07/20	6,00	13,12
01/08/20	6,16	13,37
02/08/20	6,40	13,64
03/08/20	7,10	13,97
04/08/20	8,80	14,47
05/08/20	8,82	14,97
06/08/20	7,78	15,36
07/08/20	7,62	15,74
08/08/20	7,52	16,10
09/08/20	7,60	16,48
10/08/20	8,02	16,89
11/08/20	8,10	17,31
12/08/20	8,04	17,73
13/08/20	8,50	18,19
<b>14/08/20</b>	<b>8,56</b>	<b>18,66</b>

**Vientiane Km 4**



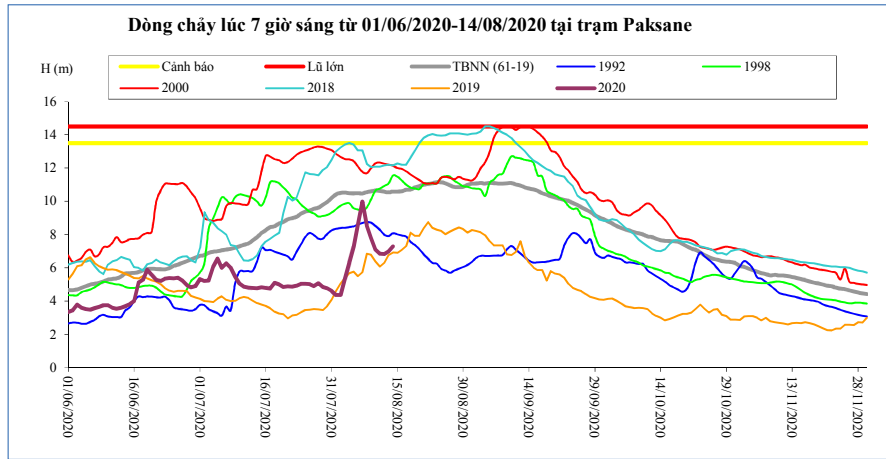
T. gian	H(m)	W(tỷ m <sup>3</sup> )
31/07/20	2,62	14,23
01/08/20	2,56	14,51
02/08/20	2,78	14,80
03/08/20	3,10	15,14
04/08/20	4,08	15,67
05/08/20	5,94	16,21
06/08/20	5,70	16,67
07/08/20	4,72	17,14
08/08/20	4,40	17,60
09/08/20	4,28	18,07
10/08/20	4,38	18,56
11/08/20	4,80	19,04
12/08/20	4,88	19,50
13/08/20	4,84	20,02
<b>14/08/20</b>	<b>5,35</b>	<b>20,53</b>

**Nong Khai**



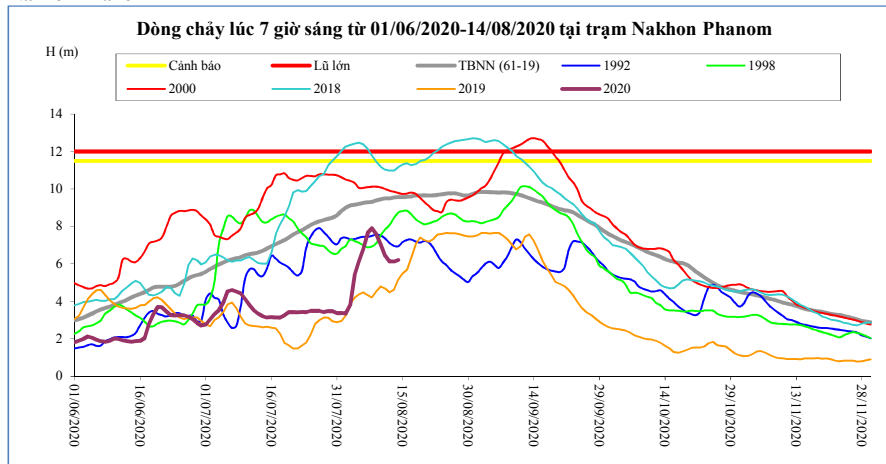
T. gian	H(m)	W(tỷ m <sup>3</sup> )
31/07/20	3,09	14,72
01/08/20	3,03	15,00
02/08/20	3,15	15,30
03/08/20	3,44	15,65
04/08/20	4,20	16,19
05/08/20	5,80	16,75
06/08/20	6,18	17,24
07/08/20	5,45	17,75
08/08/20	5,05	18,26
09/08/20	4,83	18,76
10/08/20	4,85	19,28
11/08/20	5,21	19,79
12/08/20	5,38	20,28
13/08/20	5,32	20,81
<b>14/08/20</b>	<b>5,68</b>	<b>21,35</b>

**Paksane**



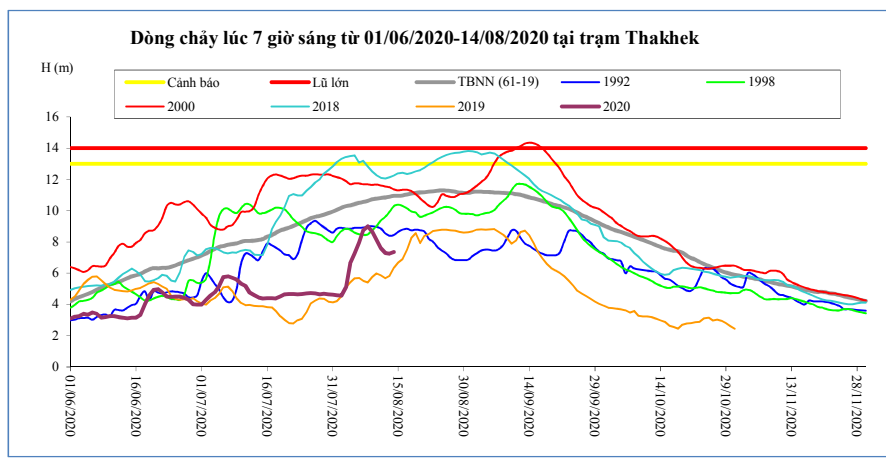
T. gian	H(m)	W(tỷ m <sup>3</sup> )
31/07/20	4,63	18,90
01/08/20	4,37	19,25
02/08/20	4,38	19,60
03/08/20	5,34	20,02
04/08/20	6,32	20,67
05/08/20	7,30	21,39
06/08/20	8,61	22,14
07/08/20	9,99	22,99
08/08/20	8,54	23,87
09/08/20	7,82	24,71
10/08/20	7,11	25,49
11/08/20	6,85	26,22
12/08/20	6,83	26,90
13/08/20	6,99	27,61
14/08/20	7,30	28,33

**Nakhon Phanom**



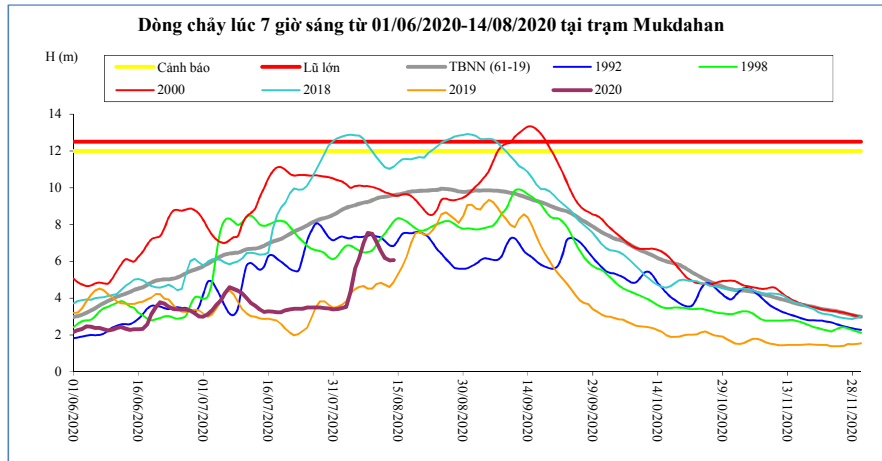
T. gian	H(m)	W(tỷ m <sup>3</sup> )
31/07/20	3,38	23,84
01/08/20	3,37	24,28
02/08/20	3,33	24,71
03/08/20	3,80	25,21
04/08/20	5,41	25,98
05/08/20	6,11	26,89
06/08/20	6,77	27,94
07/08/20	7,66	29,20
08/08/20	7,90	30,52
09/08/20	7,57	31,75
10/08/20	7,03	32,86
11/08/20	6,45	33,84
12/08/20	6,13	34,76
13/08/20	6,12	35,67
14/08/20	6,21	36,60

**Thakhek**



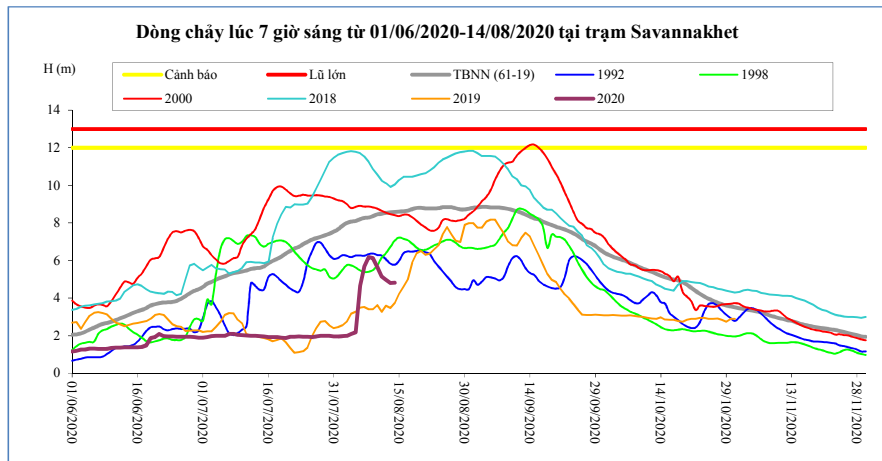
T. gian	H(m)	W(tỷ m <sup>3</sup> )
31/07/20	4,63	23,29
01/08/20	4,59	23,71
02/08/20	4,58	24,13
03/08/20	5,10	24,62
04/08/20	6,63	25,37
05/08/20	7,26	26,24
06/08/20	7,95	27,25
07/08/20	8,75	28,44
08/08/20	9,00	29,70
09/08/20	8,66	30,87
10/08/20	8,16	31,93
11/08/20	7,60	32,87
12/08/20	7,29	33,74
13/08/20	7,26	34,61
14/08/20	7,36	35,50

**Mukdahan**



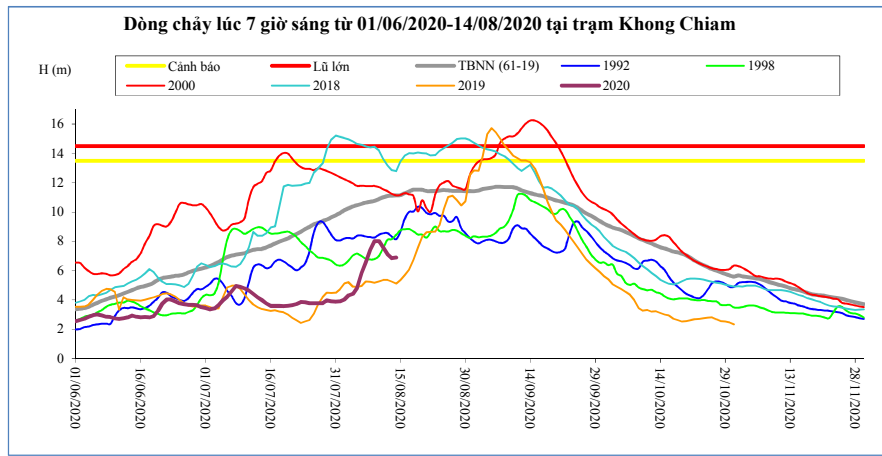
T. gian	H(m)	W(tỷ m <sup>3</sup> )
31/07/20	3,39	23,54
01/08/20	3,40	23,96
02/08/20	3,45	24,39
03/08/20	3,52	24,89
04/08/20	4,34	25,63
05/08/20	5,57	26,48
06/08/20	6,15	27,47
07/08/20	6,99	28,64
08/08/20	7,54	29,89
09/08/20	7,50	31,07
10/08/20	7,07	32,16
11/08/20	6,55	33,13
12/08/20	6,17	34,03
13/08/20	6,04	34,92
14/08/20	6,07	35,83

**Savannakhet**



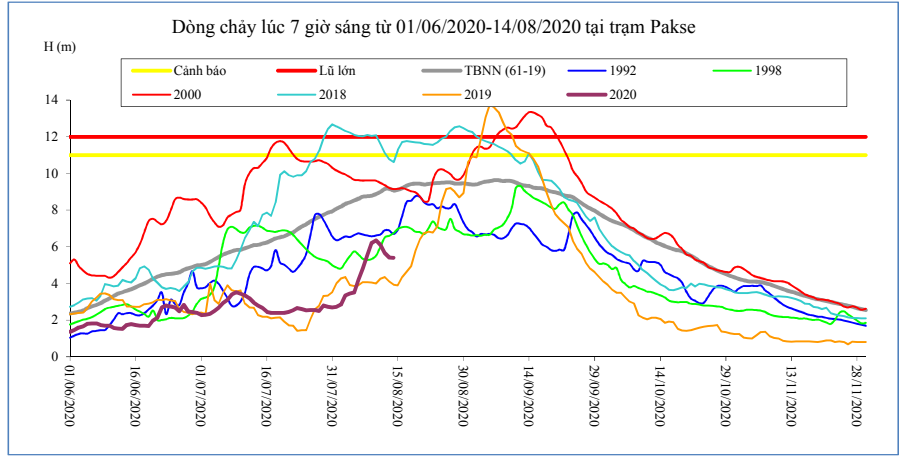
T. gian	H(m)	W(tỷ m <sup>3</sup> )
31/07/20	1,96	23,55
01/08/20	1,96	23,98
02/08/20	1,98	24,40
03/08/20	2,00	24,91
04/08/20	2,10	25,65
05/08/20	2,18	26,49
06/08/20	4,66	27,49
07/08/20	5,68	28,66
08/08/20	6,18	29,90
09/08/20	6,14	31,08
10/08/20	5,65	32,17
11/08/20	5,15	33,14
12/08/20	4,98	34,04
13/08/20	4,80	34,94
14/08/20	4,82	35,85

**Khong Chiam**



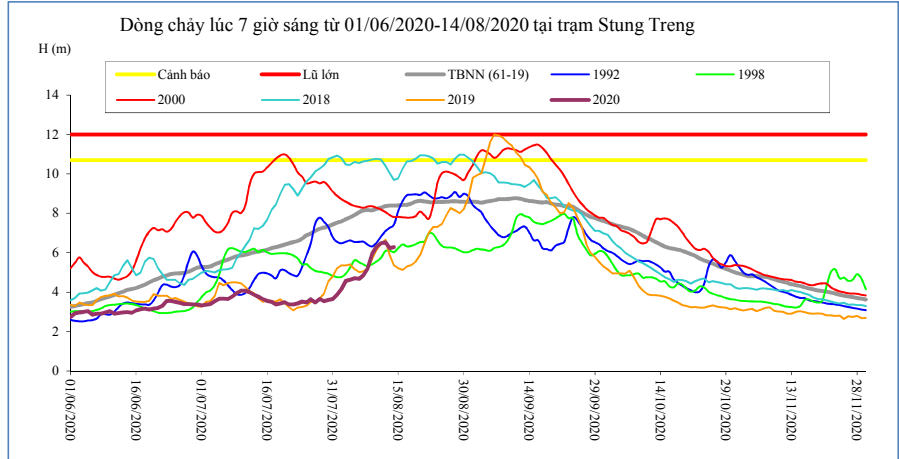
T. gian	H(m)	W(tỷ m <sup>3</sup> )
31/07/20	3,87	26,04
01/08/20	3,89	26,52
02/08/20	4,03	27,02
03/08/20	4,32	27,58
04/08/20	4,43	28,15
05/08/20	4,85	28,80
06/08/20	5,85	29,63
07/08/20	6,56	30,62
08/08/20	7,42	31,80
09/08/20	8,01	33,11
10/08/20	8,02	34,43
11/08/20	7,60	35,65
12/08/20	7,11	36,76
13/08/20	6,84	37,81
14/08/20	6,90	38,87

**Pakse**



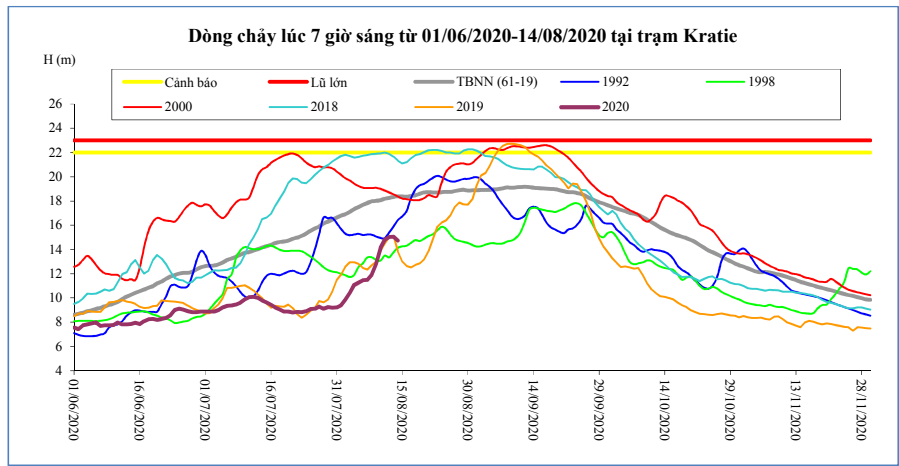
T. gian	H(m)	W(tỷ m <sup>3</sup> )
31/07/20	2,70	26,01
01/08/20	2,72	26,50
02/08/20	2,85	27,01
03/08/20	3,34	27,63
04/08/20	3,44	28,26
05/08/20	3,52	28,91
06/08/20	4,20	29,71
07/08/20	4,82	30,66
08/08/20	5,56	31,80
09/08/20	6,20	33,11
10/08/20	6,35	34,46
11/08/20	6,10	35,74
12/08/20	5,66	36,91
13/08/20	5,42	38,00
14/08/20	5,40	39,10

**Stung Treng**



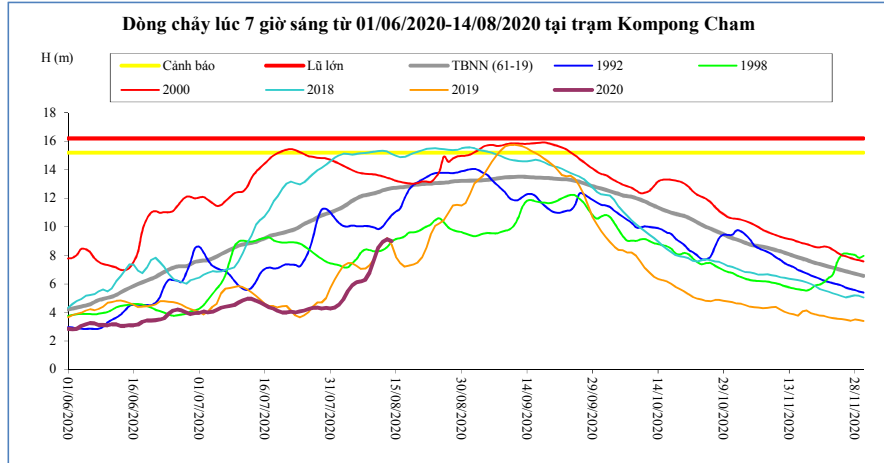
T. gian	H(m)	W(tỷ m <sup>3</sup> )
31/07/20	3,66	28,50
01/08/20	3,86	29,06
02/08/20	4,16	29,70
03/08/20	4,58	30,43
04/08/20	4,62	31,28
05/08/20	4,71	32,16
06/08/20	4,68	33,09
07/08/20	4,85	34,04
08/08/20	5,22	35,09
09/08/20	5,95	36,32
10/08/20	6,30	37,84
11/08/20	6,48	39,50
12/08/20	6,53	41,19
13/08/20	6,24	42,89
14/08/20	6,29	44,51

**Kratie**



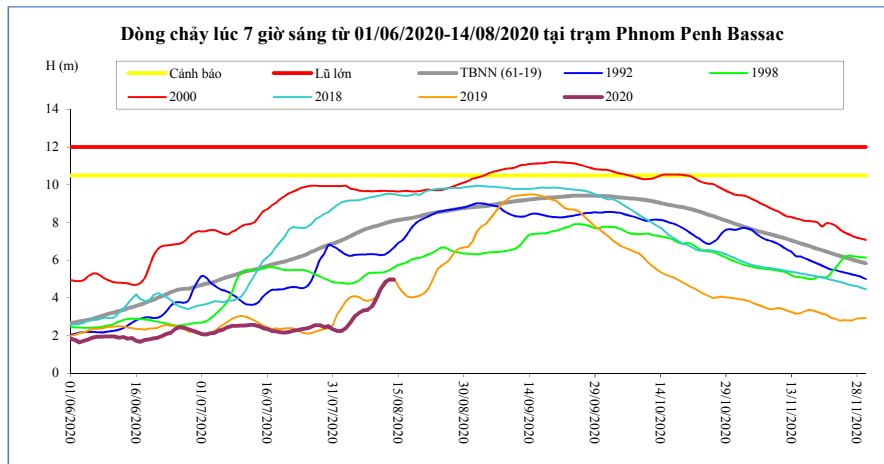
T. gian	H(m)	W(tỷ m <sup>3</sup> )
31/07/20	9,23	28,83
01/08/20	9,41	29,40
02/08/20	9,85	30,05
03/08/20	10,44	30,80
04/08/20	11,10	31,68
05/08/20	11,29	32,59
06/08/20	11,46	33,53
07/08/20	11,50	34,49
08/08/20	11,89	35,52
09/08/20	12,78	36,75
10/08/20	14,14	38,29
11/08/20	14,80	39,99
12/08/20	15,03	41,76
13/08/20	15,05	43,53
14/08/20	14,75	45,22

**Kompong Cham**



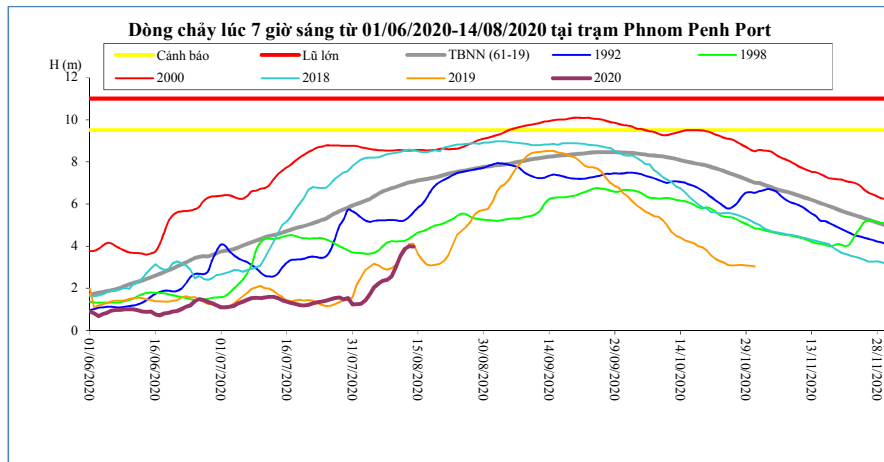
T. gian	H(m)	Hbq(m)
31/07/20	4,27	11,01
01/08/20	4,34	11,13
02/08/20	4,54	11,26
03/08/20	4,92	11,41
04/08/20	5,50	11,62
05/08/20	5,89	11,82
06/08/20	6,10	11,99
07/08/20	6,17	12,14
08/08/20	6,28	12,22
09/08/20	6,80	12,29
10/08/20	7,70	12,36
11/08/20	8,54	12,43
12/08/20	8,96	12,56
13/08/20	9,14	12,64
14/08/20	9,00	12,70

**Phnom Penh Bassac**



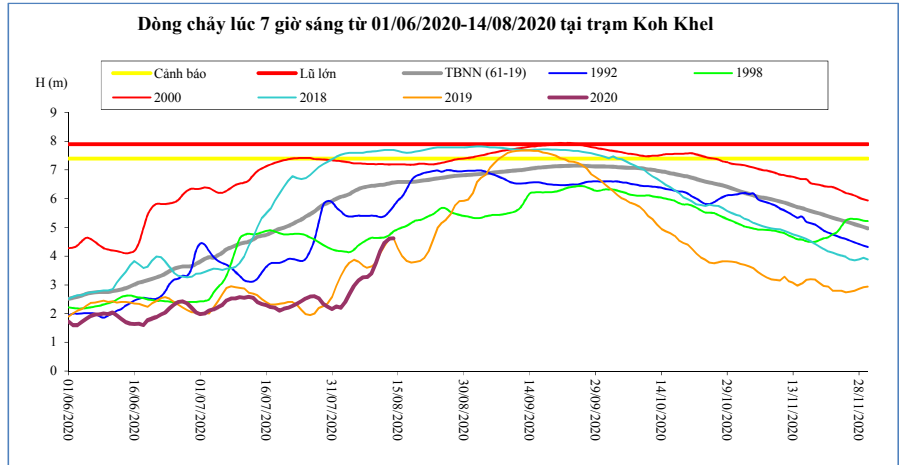
T. gian	H(m)	Hbq(m)
31/07/20	2,33	6,88
01/08/20	2,25	6,97
02/08/20	2,26	7,05
03/08/20	2,41	7,16
04/08/20	2,68	7,27
05/08/20	3,02	7,39
06/08/20	3,21	7,50
07/08/20	3,33	7,61
08/08/20	3,38	7,69
09/08/20	3,55	7,76
10/08/20	3,97	7,82
11/08/20	4,50	7,89
12/08/20	4,85	7,96
13/08/20	4,98	8,03
14/08/20	4,97	8,08

**Phnom Penh Port**



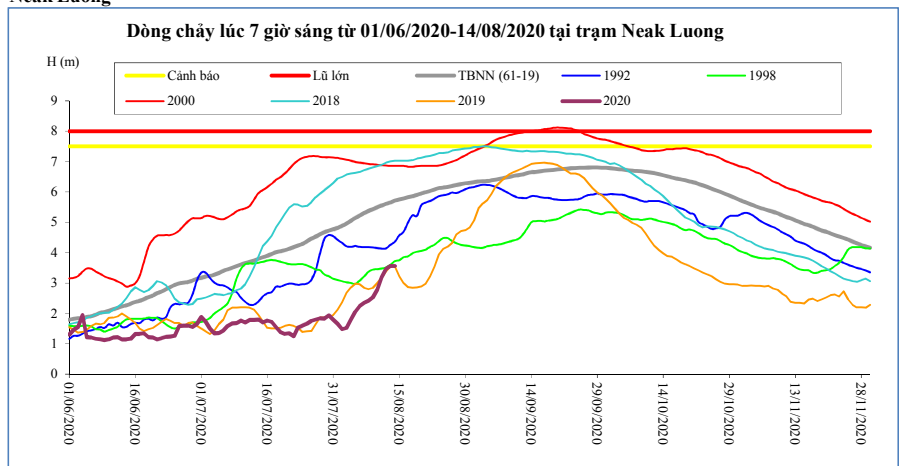
T. gian	H(m)	Hbq(m)
31/07/20	1,23	5,92
01/08/20	1,25	5,99
02/08/20	1,26	6,07
03/08/20	1,43	6,15
04/08/20	1,70	6,24
05/08/20	2,05	6,36
06/08/20	2,23	6,49
07/08/20	2,35	6,60
08/08/20	2,40	6,68
09/08/20	2,57	6,75
10/08/20	2,99	6,81
11/08/20	3,52	6,88
12/08/20	3,87	6,96
13/08/20	3,99	7,02
14/08/20	3,98	7,06

**Koh Khel**



T. gian	H(m)	Hbq(m)
31/07/20	2,16	5,92
01/08/20	2,25	6,00
02/08/20	2,21	6,07
03/08/20	2,41	6,10
04/08/20	2,68	6,17
05/08/20	2,96	6,26
06/08/20	3,15	6,33
07/08/20	3,26	6,39
08/08/20	3,27	6,42
09/08/20	3,41	6,45
10/08/20	3,78	6,46
11/08/20	4,18	6,48
12/08/20	4,48	6,50
13/08/20	4,61	6,53
14/08/20	4,62	6,56

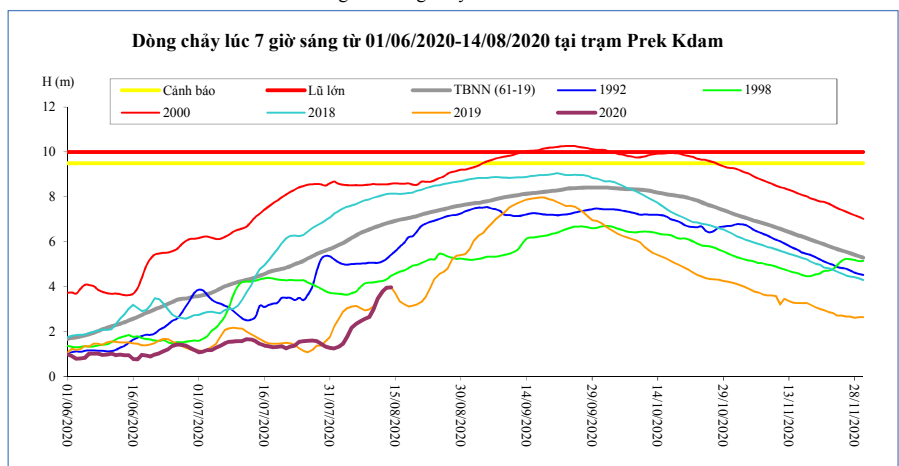
**Neak Luong**



T. gian	H(m)	Hbq(m)
31/07/20	1,80	4,77
01/08/20	1,66	4,82
02/08/20	1,48	4,88
03/08/20	1,52	4,95
04/08/20	1,78	5,05
05/08/20	2,05	5,14
06/08/20	2,24	5,22
07/08/20	2,34	5,30
08/08/20	2,42	5,37
09/08/20	2,52	5,44
10/08/20	2,78	5,50
11/08/20	3,20	5,55
12/08/20	3,46	5,61
13/08/20	3,56	5,65
14/08/20	3,56	5,71

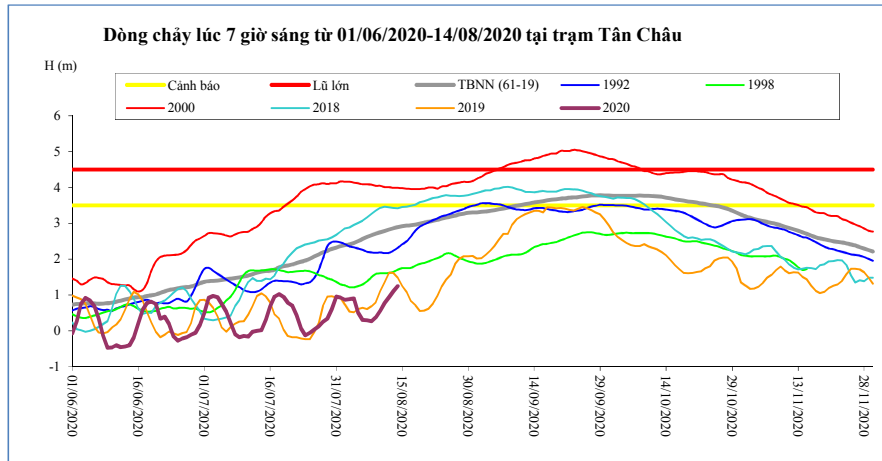
**Prek Kdam**

Sông Mê Công chảy vào Biển Hồ.



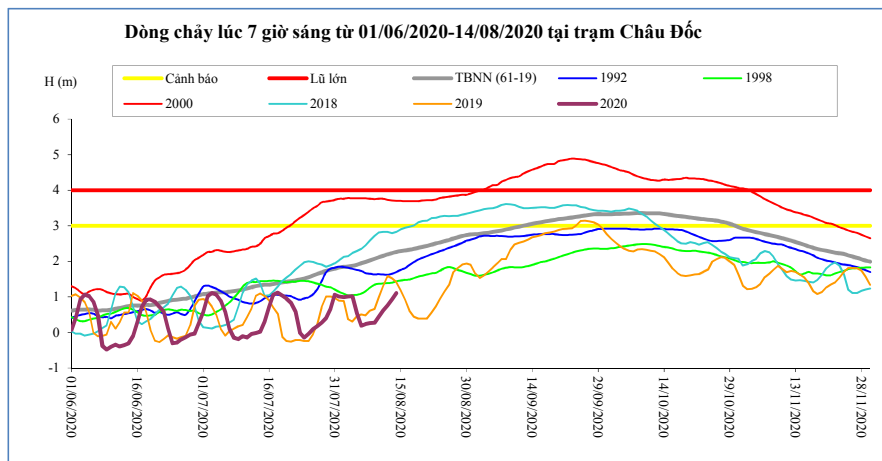
T. gian	H(m)	W (tỷ m <sup>3</sup> )	Biển Hồ
31/07/20	1,28	0,80	
01/08/20	1,25	0,82	
02/08/20	1,32	0,82	
03/08/20	1,46	0,90	
04/08/20	1,78	0,94	
05/08/20	2,18	0,96	
06/08/20	2,35	1,00	
07/08/20	2,46	1,09	
08/08/20	2,56	1,24	
09/08/20	2,64	1,36	
10/08/20	2,98	1,62	
11/08/20	3,48	1,77	
12/08/20	3,79	1,92	
13/08/20	3,95	2,10	
14/08/20	3,97	2,45	

**Tân Châu**



T. gian	H(m)	Hbq(m)
31/07/20	0,96	2,32
01/08/20	0,93	2,36
02/08/20	0,87	2,39
03/08/20	0,89	2,41
04/08/20	0,91	2,46
05/08/20	0,51	2,51
06/08/20	0,31	2,57
07/08/20	0,30	2,62
08/08/20	0,27	2,67
09/08/20	0,38	2,71
10/08/20	0,57	2,75
11/08/20	0,78	2,79
12/08/20	0,95	2,83
13/08/20	1,11	2,87
14/08/20	1,25	2,90

**Châu Đốc**



T. gian	H(m)	Hbq(m)
31/07/20	1,06	1,80
01/08/20	1,01	1,83
02/08/20	0,99	1,85
03/08/20	1,01	1,85
04/08/20	1,02	1,87
05/08/20	0,54	1,90
06/08/20	0,19	1,95
07/08/20	0,24	1,99
08/08/20	0,26	2,03
09/08/20	0,27	2,07
10/08/20	0,44	2,11
11/08/20	0,62	2,15
12/08/20	0,76	2,20
13/08/20	0,94	2,23
14/08/20	1,11	2,27

**Ghi chú:**

-: Không có số liệu

H(m): Mức nước lúc 7 giờ sáng lấy theo số liệu thực đo của MRC. W (tỷ m3): Ước tính của Viện Quy hoạch Thủy lợi Miền Nam. W là tổng lượng nước kể từ ngày 1 tháng 6. Riêng Biển Hồ là dung tích hiện tại. Hbq (m): Mức nước trung bình nhiều năm.



### BẢN ĐỒ VỊ TRÍ CÁC TRẠM DỌC DÒNG CHÍNH MÊ KÔNG

