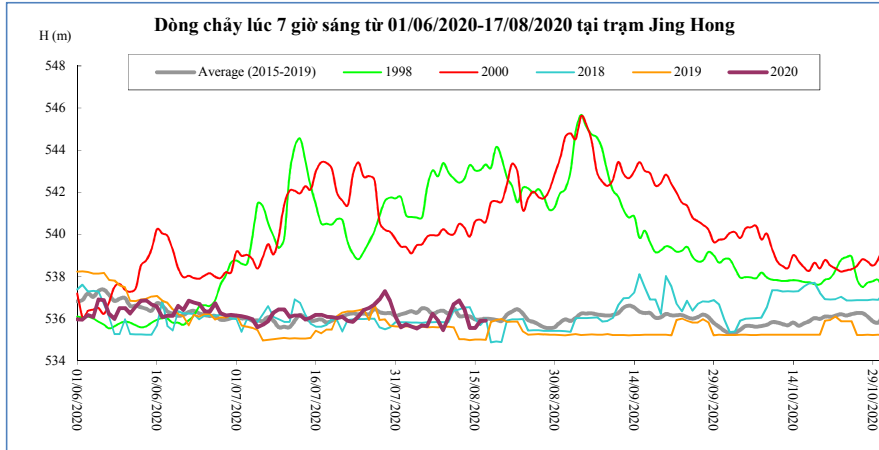


DIỄN BIẾN DÒNG CHẢY TẠI CÁC TRẠM TRÊN DÒNG CHÍNH SÔNG MÊ CÔNG
Dòng chảy lúc 7 giờ sáng từ 01/06/2020-17/08/2020

Jing Hong

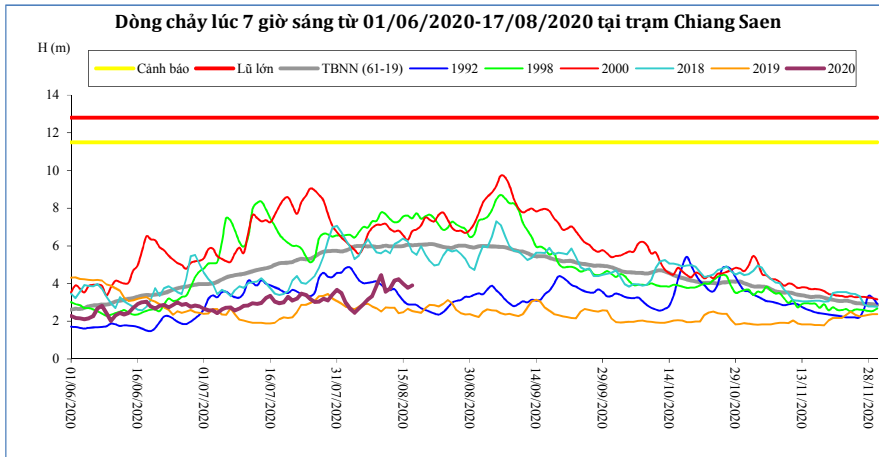
Hôm nay

17/08/20



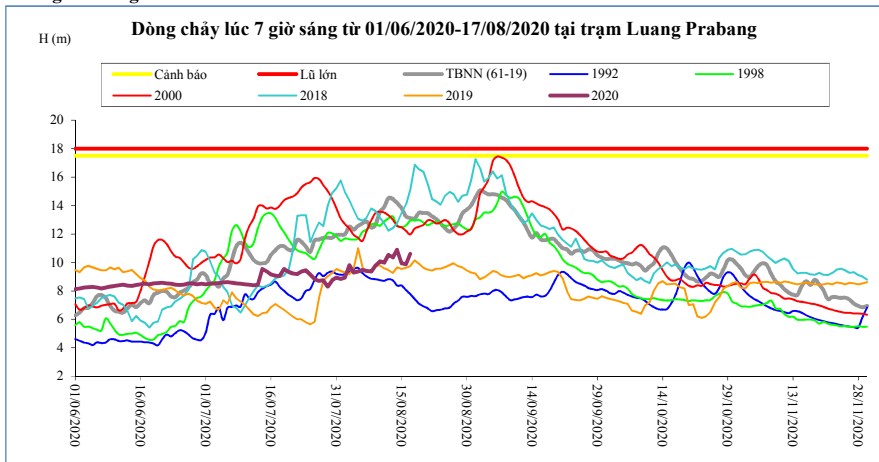
T. gian	H(m)	W(tỷ m ³)
03/08/20	535,62	6,49
04/08/20	535,54	6,55
05/08/20	535,68	6,63
06/08/20	535,66	6,70
07/08/20	536,24	6,80
08/08/20	535,92	6,88
09/08/20	535,46	6,95
10/08/20	536,07	7,04
11/08/20	536,69	7,16
12/08/20	536,87	7,29
13/08/20	536,46	7,40
14/08/20	535,57	7,47
15/08/20	535,56	7,54
16/08/20	535,90	7,62
17/08/20	535,92	7,70

Chiang Saen



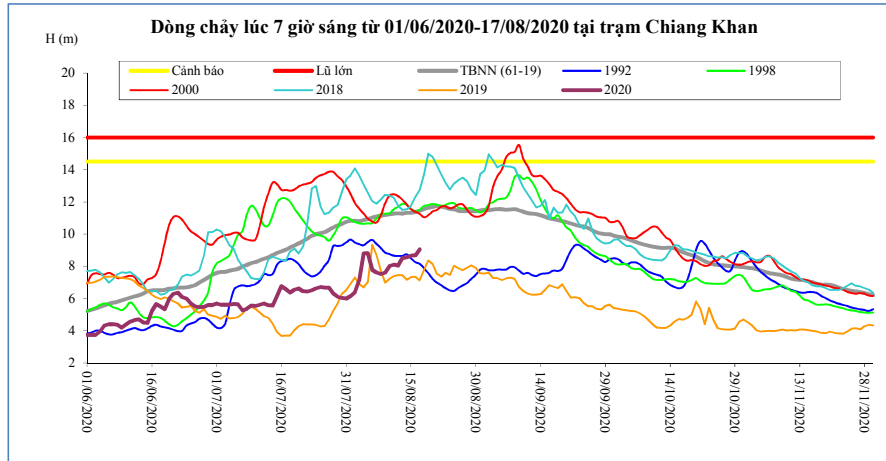
T. gian	H(m)	W(tỷ m ³)
03/08/20	2,66	9,31
04/08/20	2,45	9,43
05/08/20	2,68	9,56
06/08/20	2,90	9,71
07/08/20	3,15	9,88
08/08/20	3,33	10,06
09/08/20	3,89	10,30
10/08/20	4,44	10,59
11/08/20	3,57	10,79
12/08/20	3,74	11,01
13/08/20	4,16	11,27
14/08/20	4,23	11,54
15/08/20	3,99	11,79
16/08/20	3,77	12,01
17/08/20	3,90	12,25

Luang Prabang



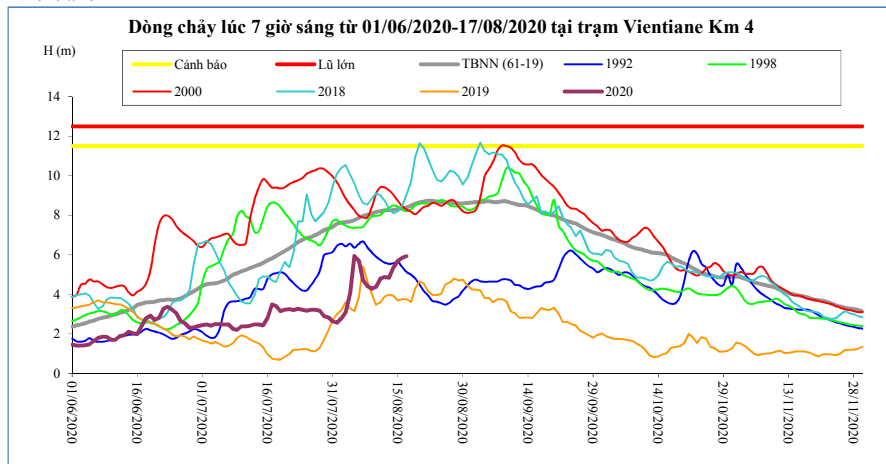
T. gian	H(m)	W(tỷ m ³)
03/08/20	9,80	28,11
04/08/20	9,30	28,61
05/08/20	9,37	29,12
06/08/20	9,47	29,64
07/08/20	9,40	30,15
08/08/20	9,35	30,65
09/08/20	9,78	31,20
10/08/20	10,08	31,78
11/08/20	10,00	32,35
12/08/20	10,53	32,98
13/08/20	10,35	33,59
14/08/20	10,90	34,26
15/08/20	9,95	34,83
16/08/20	9,87	35,39
17/08/20	10,59	36,03

Chiang Khan Vị trí sau hồ Xayabury



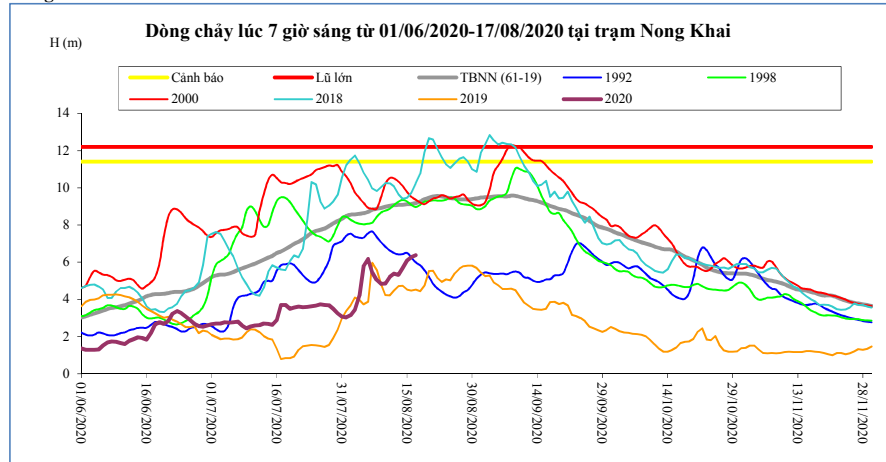
T. gian	H(m)	W(tỷ m ³)
03/08/20	7,10	13,97
04/08/20	8,80	14,47
05/08/20	8,82	14,97
06/08/20	7,78	15,36
07/08/20	7,62	15,74
08/08/20	7,52	16,10
09/08/20	7,60	16,48
10/08/20	8,02	16,89
11/08/20	8,10	17,31
12/08/20	8,04	17,73
13/08/20	8,50	18,19
14/08/20	8,56	18,66
15/08/20	8,65	19,15
16/08/20	8,68	19,63
17/08/20	9,06	20,16

Vientiane Km 4



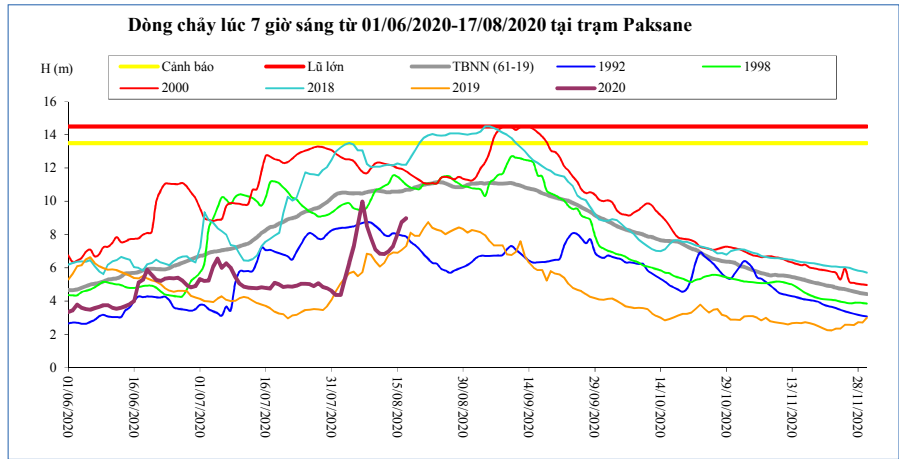
T. gian	H(m)	W(tỷ m ³)
03/08/20	3,10	15,14
04/08/20	4,08	15,67
05/08/20	5,94	16,21
06/08/20	5,70	16,67
07/08/20	4,72	17,14
08/08/20	4,40	17,60
09/08/20	4,28	18,07
10/08/20	4,38	18,56
11/08/20	4,80	19,04
12/08/20	4,88	19,50
13/08/20	4,84	20,02
14/08/20	5,35	20,53
15/08/20	5,70	21,07
16/08/20	5,84	21,62
17/08/20	5,92	22,23

Nong Khai



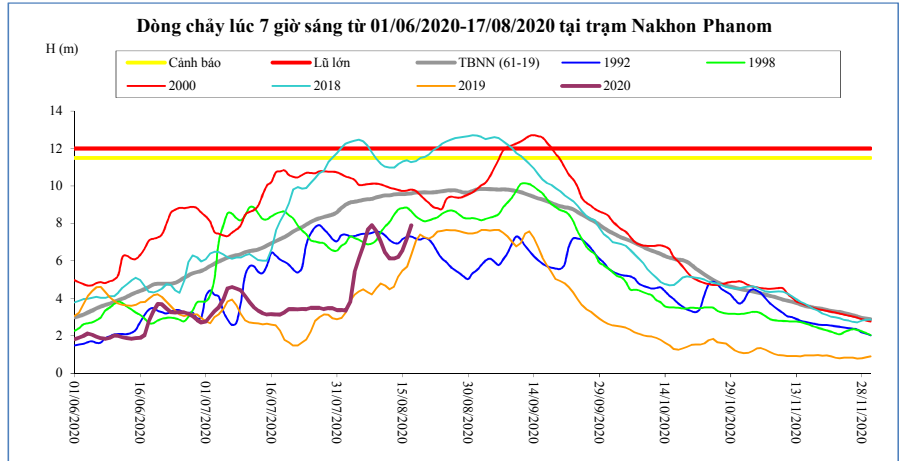
T. gian	H(m)	W(tỷ m ³)
03/08/20	3,44	15,65
04/08/20	4,20	16,19
05/08/20	5,80	16,75
06/08/20	6,18	17,24
07/08/20	5,45	17,75
08/08/20	5,05	18,26
09/08/20	4,83	18,76
10/08/20	4,85	19,28
11/08/20	5,21	19,79
12/08/20	5,38	20,28
13/08/20	5,32	20,81
14/08/20	5,68	21,35
15/08/20	6,10	21,91
16/08/20	6,26	22,49
17/08/20	6,38	23,14

Paksane



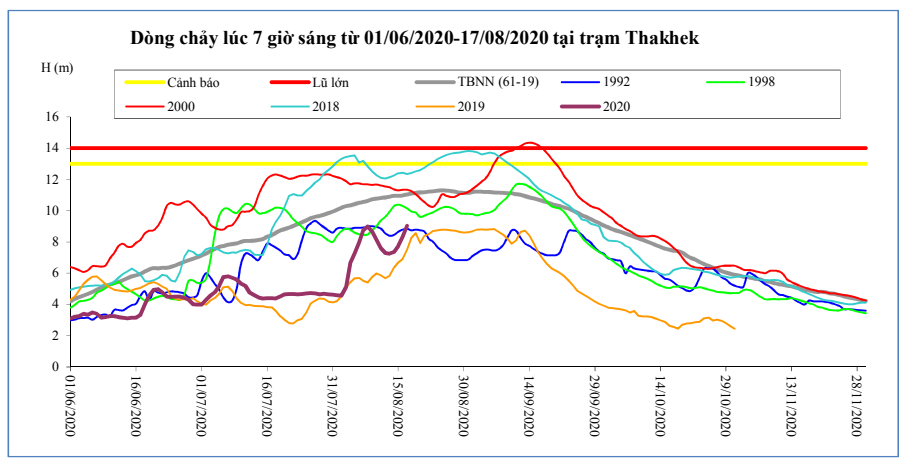
T. gian	H(m)	W(tỷ m ³)
03/08/20	5,34	20,02
04/08/20	6,32	20,67
05/08/20	7,30	21,39
06/08/20	8,61	22,14
07/08/20	9,99	22,99
08/08/20	8,54	23,87
09/08/20	7,82	24,71
10/08/20	7,11	25,49
11/08/20	6,85	26,22
12/08/20	6,83	26,90
13/08/20	6,99	27,61
14/08/20	7,30	28,33
15/08/20	8,02	29,09
16/08/20	8,76	29,94
17/08/20	8,98	30,89

Nakhon Phanom



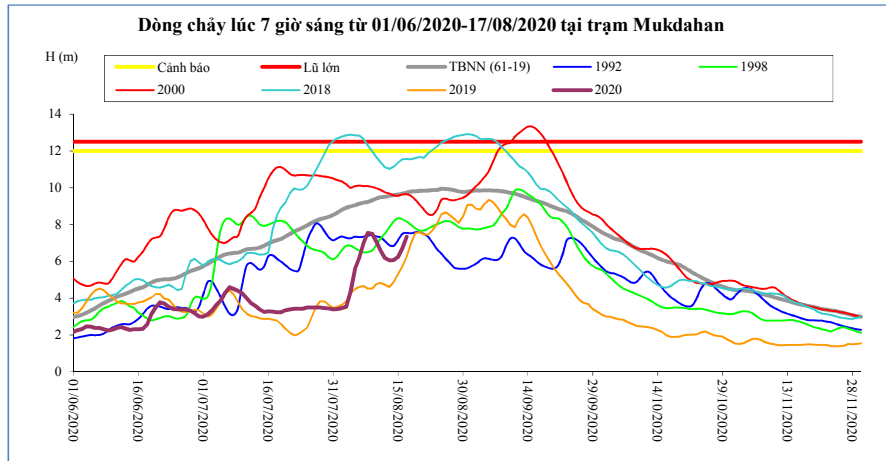
T. gian	H(m)	W(tỷ m ³)
03/08/20	3,80	25,21
04/08/20	5,41	25,98
05/08/20	6,11	26,89
06/08/20	6,77	27,94
07/08/20	7,66	29,20
08/08/20	7,90	30,52
09/08/20	7,57	31,75
10/08/20	7,03	32,86
11/08/20	6,45	33,84
12/08/20	6,13	34,76
13/08/20	6,12	35,67
14/08/20	6,21	36,60
15/08/20	6,59	37,62
16/08/20	7,22	38,77
17/08/20	7,90	40,09

Thakhek



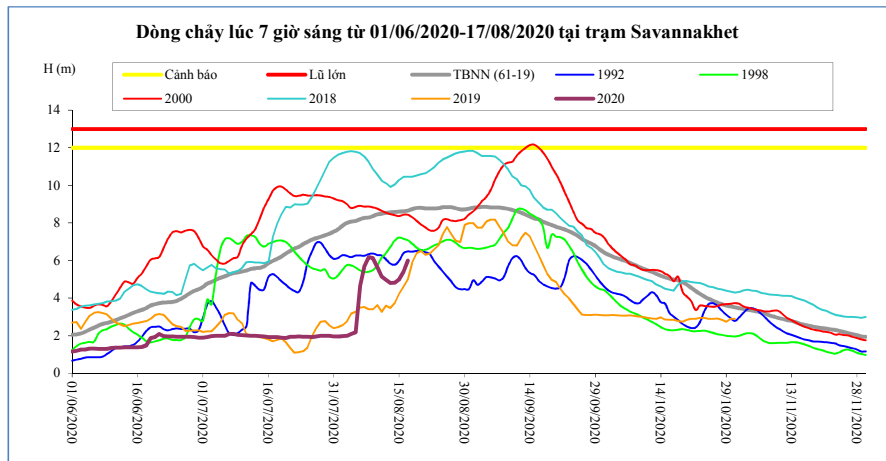
T. gian	H(m)	W(tỷ m ³)
03/08/20	5,10	24,62
04/08/20	6,63	25,37
05/08/20	7,26	26,24
06/08/20	7,95	27,25
07/08/20	8,75	28,44
08/08/20	9,00	29,70
09/08/20	8,66	30,87
10/08/20	8,16	31,93
11/08/20	7,60	32,87
12/08/20	7,29	33,74
13/08/20	7,26	34,61
14/08/20	7,36	35,50
15/08/20	7,72	36,47
16/08/20	8,33	37,56
17/08/20	9,03	38,82

Mukdahan



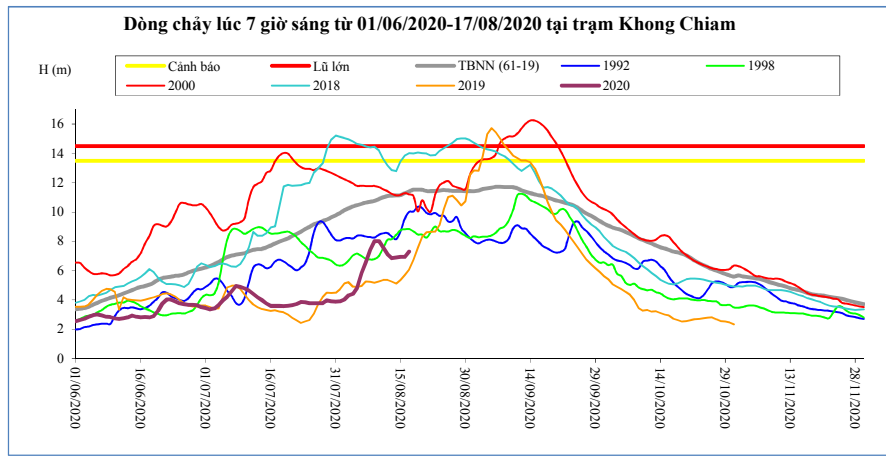
T. gian	H(m)	W(tỷ m ³)
03/08/20	3,52	24,89
04/08/20	4,34	25,63
05/08/20	5,57	26,48
06/08/20	6,15	27,47
07/08/20	6,99	28,64
08/08/20	7,54	29,89
09/08/20	7,50	31,07
10/08/20	7,07	32,16
11/08/20	6,55	33,13
12/08/20	6,17	34,03
13/08/20	6,04	34,92
14/08/20	6,07	35,83
15/08/20	6,24	36,80
16/08/20	6,69	37,90
17/08/20	7,34	39,15

Savannakhet



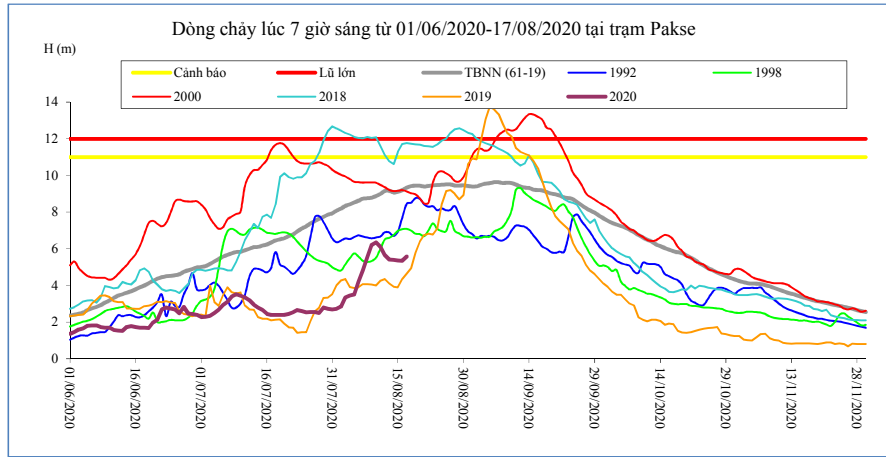
T. gian	H(m)	W(tỷ m ³)
03/08/20	2,00	24,91
04/08/20	2,10	25,65
05/08/20	2,18	26,49
06/08/20	4,66	27,49
07/08/20	5,68	28,66
08/08/20	6,18	29,90
09/08/20	6,14	31,08
10/08/20	5,65	32,17
11/08/20	5,15	33,14
12/08/20	4,98	34,04
13/08/20	4,80	34,94
14/08/20	4,82	35,85
15/08/20	4,99	36,82
16/08/20	5,40	37,92
17/08/20	6,00	39,16

Khong Chiam



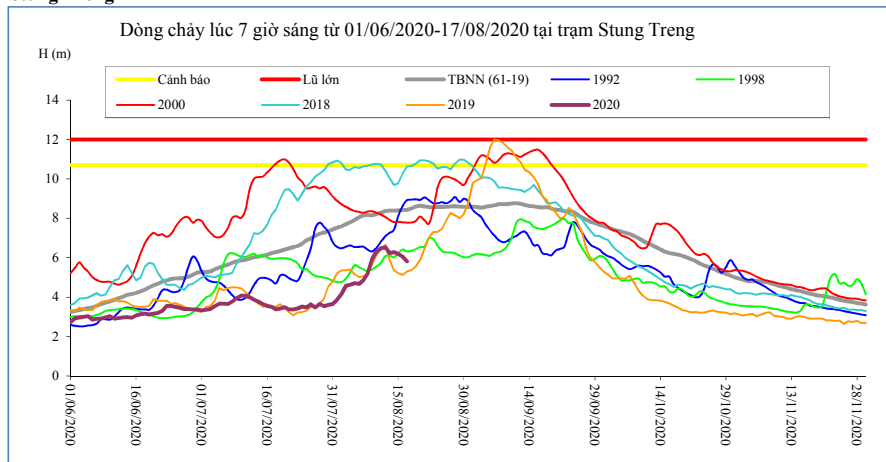
T. gian	H(m)	W(tỷ m ³)
03/08/20	4,32	27,58
04/08/20	4,43	28,15
05/08/20	4,85	28,80
06/08/20	5,85	29,63
07/08/20	6,56	30,62
08/08/20	7,42	31,80
09/08/20	8,01	33,11
10/08/20	8,02	34,43
11/08/20	7,60	35,65
12/08/20	7,11	36,76
13/08/20	6,84	37,81
14/08/20	6,90	38,87
15/08/20	6,94	39,94
16/08/20	6,94	41,01
17/08/20	7,31	42,16

Pakse



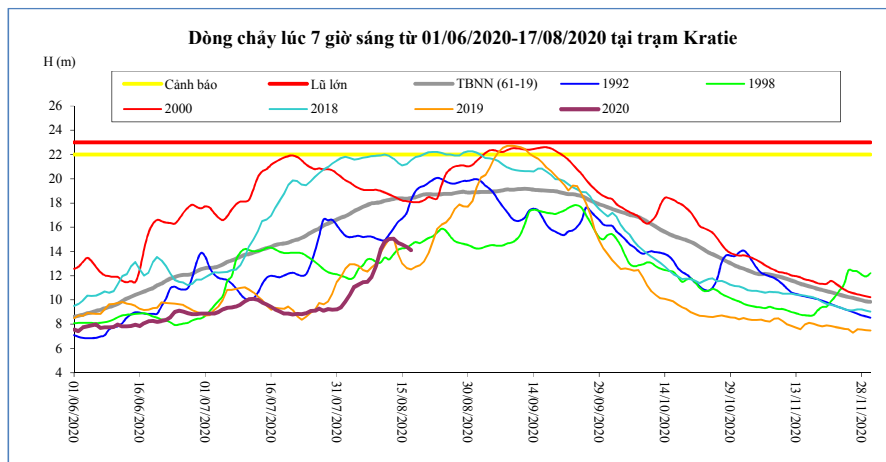
T. gian	H(m)	W(tỷ m ³)
03/08/20	3,34	27,63
04/08/20	3,44	28,26
05/08/20	3,52	28,91
06/08/20	4,20	29,71
07/08/20	4,82	30,66
08/08/20	5,56	31,80
09/08/20	6,20	33,11
10/08/20	6,35	34,46
11/08/20	6,10	35,74
12/08/20	5,66	36,91
13/08/20	5,42	38,00
14/08/20	5,40	39,10
15/08/20	5,36	40,18
16/08/20	5,34	41,26
17/08/20	5,58	42,40

Stung Treng



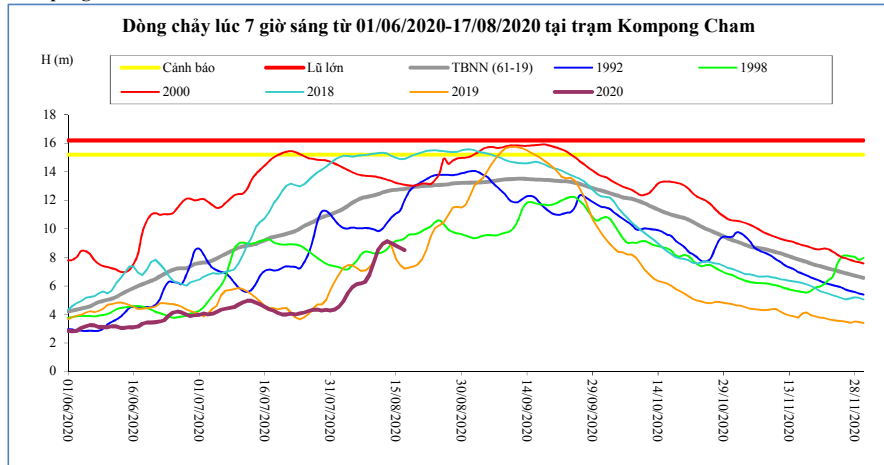
T. gian	H(m)	W(tỷ m ³)
03/08/20	4,58	30,43
04/08/20	4,62	31,28
05/08/20	4,71	32,16
06/08/20	4,68	33,09
07/08/20	4,85	34,04
08/08/20	5,22	35,09
09/08/20	5,95	36,32
10/08/20	6,30	37,84
11/08/20	6,48	39,50
12/08/20	6,53	41,19
13/08/20	6,24	42,89
14/08/20	6,29	44,51
15/08/20	6,18	46,09
16/08/20	6,06	47,63
17/08/20	5,82	49,12

Kratie



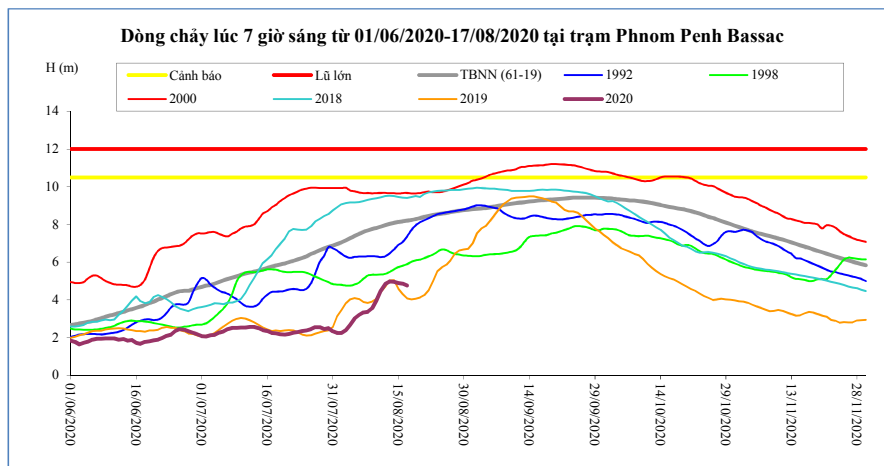
T. gian	H(m)	W(tỷ m ³)
03/08/20	10,44	30,80
04/08/20	11,10	31,68
05/08/20	11,29	32,59
06/08/20	11,46	33,53
07/08/20	11,50	34,49
08/08/20	11,89	35,52
09/08/20	12,78	36,75
10/08/20	14,14	38,29
11/08/20	14,80	39,99
12/08/20	15,03	41,76
13/08/20	15,05	43,53
14/08/20	14,75	45,22
15/08/20	14,58	46,87
16/08/20	14,38	48,47
17/08/20	14,11	50,00

Kompong Cham



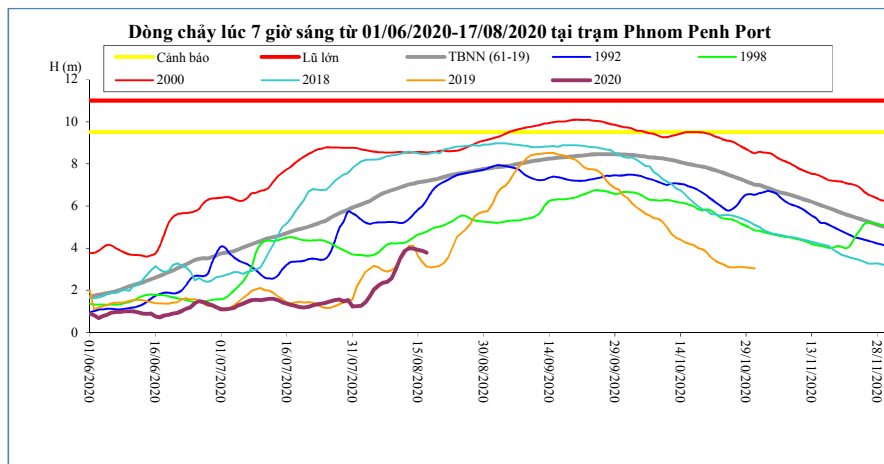
T. gian	H(m)	Hbq(m)
03/08/20	4,92	11,41
04/08/20	5,50	11,62
05/08/20	5,89	11,82
06/08/20	6,10	11,99
07/08/20	6,17	12,14
08/08/20	6,28	12,22
09/08/20	6,80	12,29
10/08/20	7,70	12,36
11/08/20	8,54	12,43
12/08/20	8,96	12,56
13/08/20	9,14	12,64
14/08/20	9,00	12,70
15/08/20	8,82	12,74
16/08/20	8,66	12,77
17/08/20	8,50	12,80

Phnom Penh Bassac



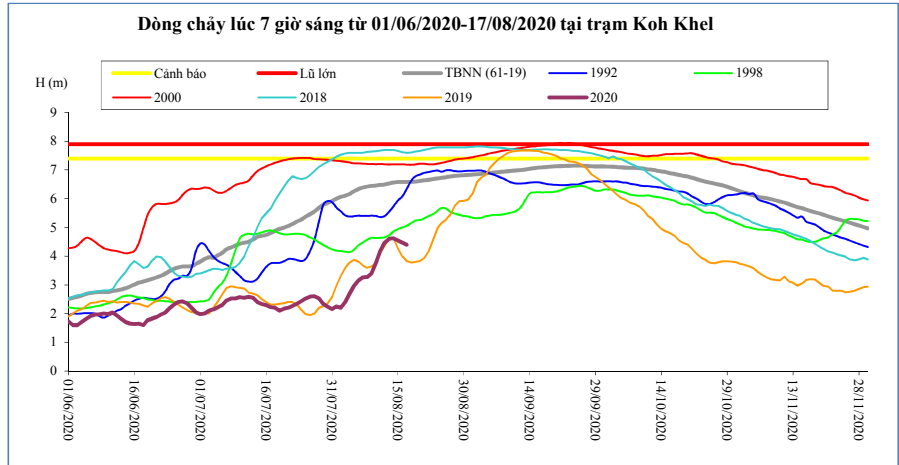
T. gian	H(m)	Hbq(m)
03/08/20	2,41	7,16
04/08/20	2,68	7,27
05/08/20	3,02	7,39
06/08/20	3,21	7,50
07/08/20	3,33	7,61
08/08/20	3,38	7,69
09/08/20	3,55	7,76
10/08/20	3,97	7,82
11/08/20	4,50	7,89
12/08/20	4,85	7,96
13/08/20	4,98	8,03
14/08/20	4,97	8,08
15/08/20	4,90	8,13
16/08/20	4,86	8,17
17/08/20	4,76	8,21

Phnom Penh Port



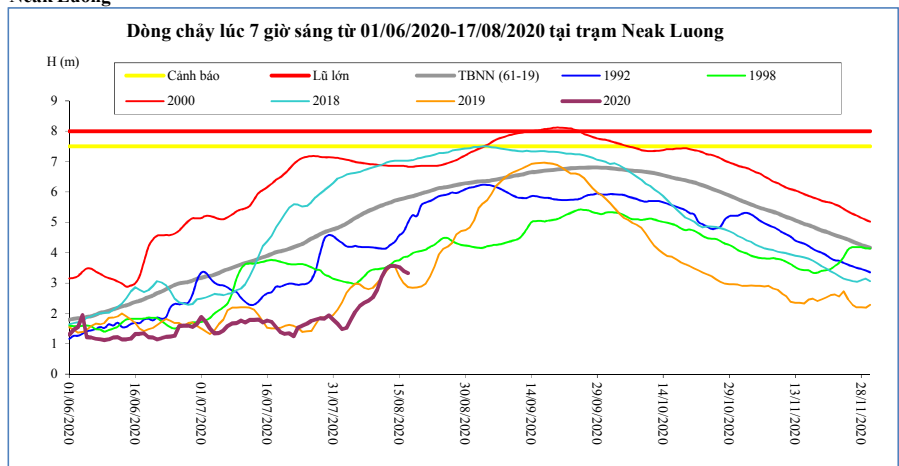
T. gian	H(m)	Hbq(m)
03/08/20	1,43	6,15
04/08/20	1,70	6,24
05/08/20	2,05	6,36
06/08/20	2,23	6,49
07/08/20	2,35	6,60
08/08/20	2,40	6,68
09/08/20	2,57	6,75
10/08/20	2,99	6,81
11/08/20	3,52	6,88
12/08/20	3,87	6,96
13/08/20	3,99	7,02
14/08/20	3,98	7,06
15/08/20	3,92	7,12
16/08/20	3,88	7,15
17/08/20	3,78	7,19

Koh Khel



T. gian	H(m)	Hbq(m)
03/08/20	2,41	6,10
04/08/20	2,68	6,17
05/08/20	2,96	6,26
06/08/20	3,15	6,33
07/08/20	3,26	6,39
08/08/20	3,27	6,42
09/08/20	3,41	6,45
10/08/20	3,78	6,46
11/08/20	4,18	6,48
12/08/20	4,48	6,50
13/08/20	4,61	6,53
14/08/20	4,62	6,56
15/08/20	4,55	6,58
16/08/20	4,48	6,58
17/08/20	4,40	6,58

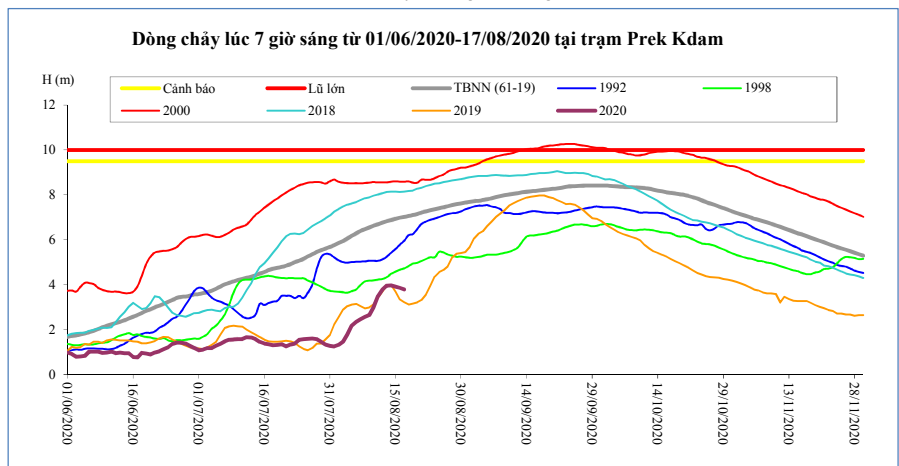
Neak Luong



T. gian	H(m)	Hbq(m)
03/08/20	1,52	4,95
04/08/20	1,78	5,05
05/08/20	2,05	5,14
06/08/20	2,24	5,22
07/08/20	2,34	5,30
08/08/20	2,42	5,37
09/08/20	2,52	5,44
10/08/20	2,78	5,50
11/08/20	3,20	5,55
12/08/20	3,46	5,61
13/08/20	3,56	5,65
14/08/20	3,56	5,71
15/08/20	3,52	5,75
16/08/20	3,40	5,78
17/08/20	3,32	5,82

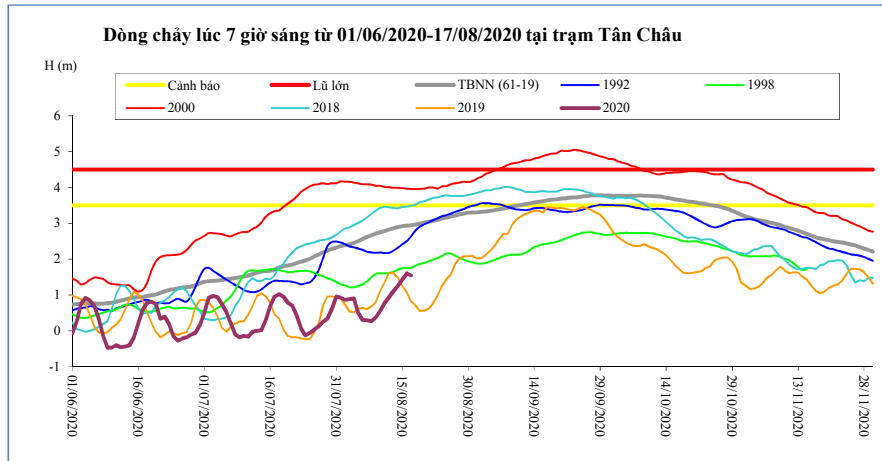
Prek Kdam

Biển Hồ chảy ra sông Mê Công.



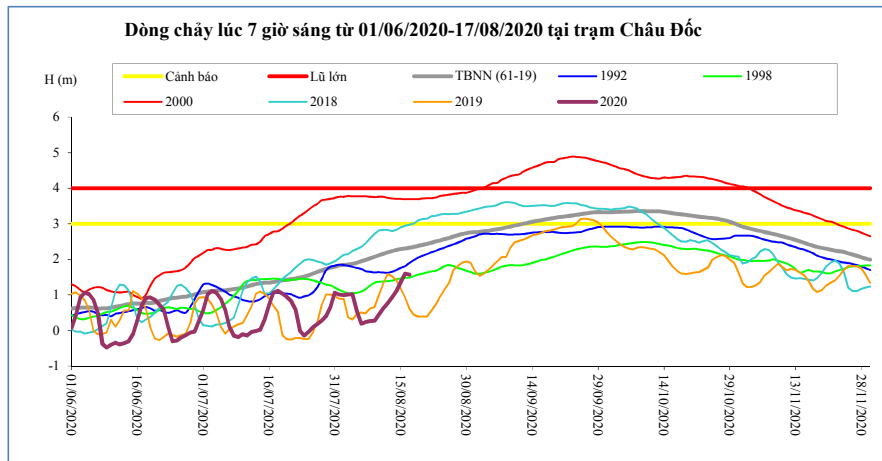
T. gian	H(m)	Biển Hồ W (tỷ m ³)
03/08/20	1,46	0,90
04/08/20	1,78	0,94
05/08/20	2,18	0,96
06/08/20	2,35	1,00
07/08/20	2,46	1,09
08/08/20	2,56	1,24
09/08/20	2,64	1,36
10/08/20	2,98	1,62
11/08/20	3,48	1,77
12/08/20	3,79	1,92
13/08/20	3,95	2,10
14/08/20	3,97	2,45
15/08/20	3,91	2,80
16/08/20	3,85	3,42
17/08/20	3,79	3,50

Tân Châu



T. gian	H(m)	Hbq(m)
03/08/20	0,89	2,41
04/08/20	0,91	2,46
05/08/20	0,51	2,51
06/08/20	0,31	2,57
07/08/20	0,30	2,62
08/08/20	0,27	2,67
09/08/20	0,38	2,71
10/08/20	0,57	2,75
11/08/20	0,78	2,79
12/08/20	0,95	2,83
13/08/20	1,11	2,87
14/08/20	1,25	2,90
15/08/20	1,43	2,92
16/08/20	1,61	2,94
17/08/20	1,55	2,95

Châu Đốc



T. gian	H(m)	Hbq(m)
03/08/20	1,01	1,85
04/08/20	1,02	1,87
05/08/20	0,54	1,90
06/08/20	0,19	1,95
07/08/20	0,24	1,99
08/08/20	0,26	2,03
09/08/20	0,27	2,07
10/08/20	0,44	2,11
11/08/20	0,62	2,15
12/08/20	0,76	2,20
13/08/20	0,94	2,23
14/08/20	1,11	2,27
15/08/20	1,35	2,29
16/08/20	1,60	2,31
17/08/20	1,57	2,33

Ghi chú:

-: Không có số liệu

H(m): Mức nước lúc 7 giờ sáng lấy theo số liệu thực đo của MRC. W (tỷ m3): Ước tính của Viện Quy hoạch Thủy lợi Miền Nam. W là tổng lượng nước kể từ ngày 1 tháng 6. Riêng Biển Hồ là dung tích hiện tại. Hbq (m): Mức nước trung bình nhiều năm.

BẢN ĐỒ VỊ TRÍ CÁC TRẠM DỌC DÒNG CHÍNH MÊ CÔNG

