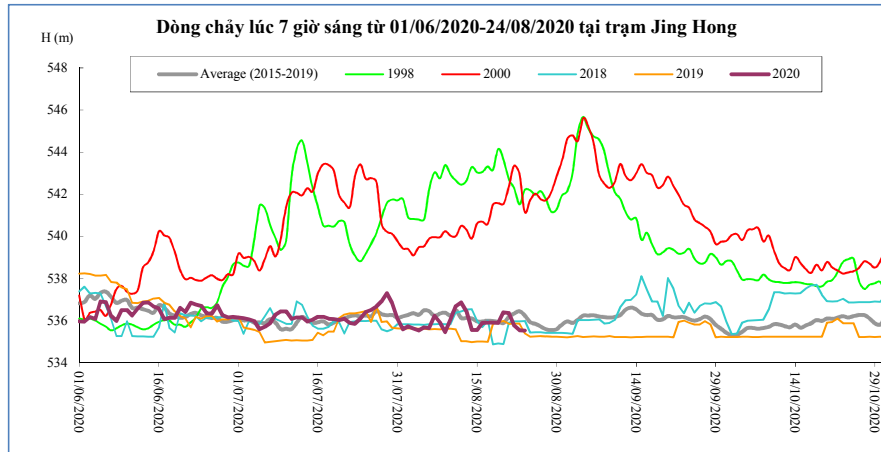


DIỄN BIẾN DÒNG CHẢY TẠI CÁC TRẠM TRÊN DÒNG CHÍNH SÔNG MÊ CÔNG
Dòng chảy lúc 7 giờ sáng từ 01/06/2020-24/08/2020

Jing Hong

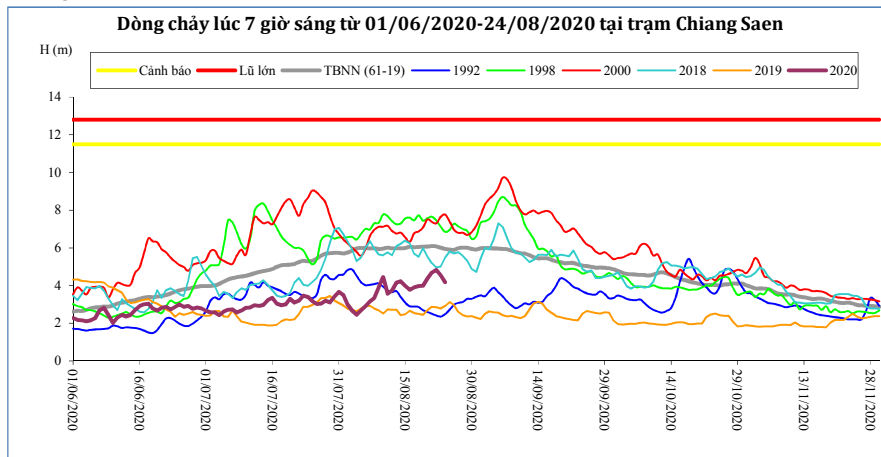
Hôm nay

24/08/20



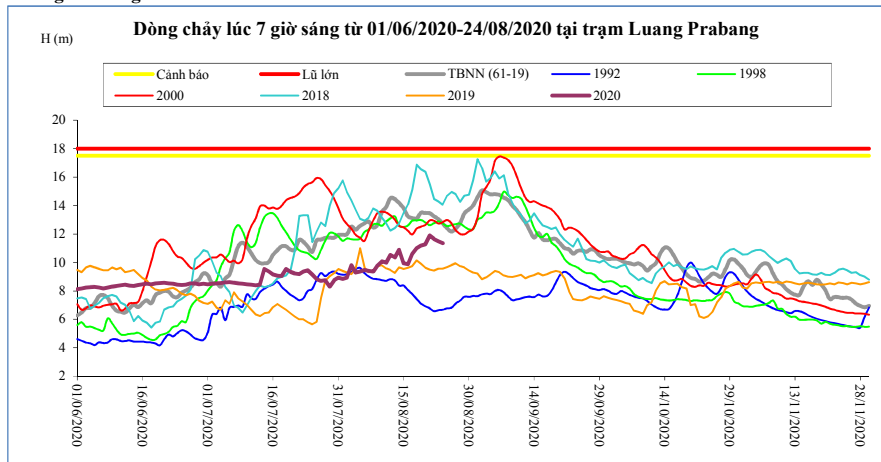
T. gian	H(m)	W(tỷ m ³)
10/08/20	536,07	7,04
11/08/20	536,69	7,16
12/08/20	536,87	7,29
13/08/20	536,46	7,40
14/08/20	535,57	7,47
15/08/20	535,56	7,54
16/08/20	535,90	7,62
17/08/20	535,92	7,70
18/08/20	535,92	7,78
19/08/20	535,90	7,87
20/08/20	536,40	7,97
21/08/20	536,37	8,08
22/08/20	535,76	8,15
23/08/20	535,55	8,22
24/08/20	535,54	8,29

Chiang Saen



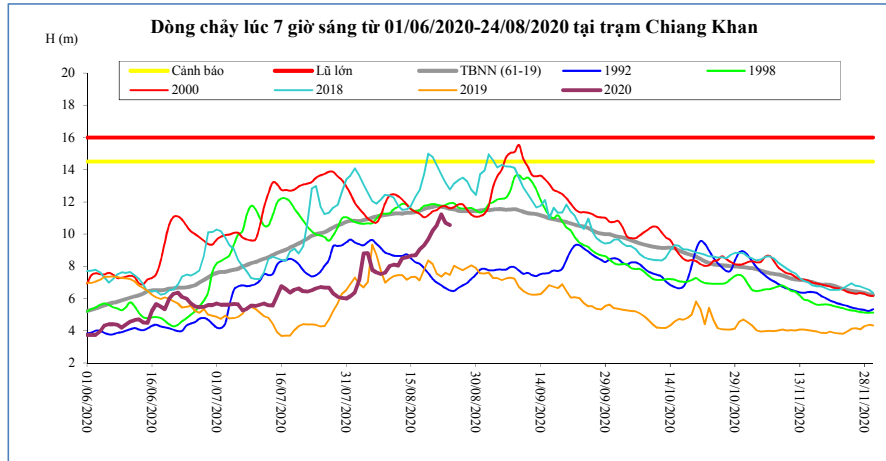
T. gian	H(m)	W(tỷ m ³)
10/08/20	4,44	10,59
11/08/20	3,57	10,79
12/08/20	3,74	11,01
13/08/20	4,16	11,27
14/08/20	4,23	11,54
15/08/20	3,99	11,79
16/08/20	3,77	12,01
17/08/20	3,90	12,25
18/08/20	3,98	12,49
19/08/20	3,99	12,73
20/08/20	4,38	13,02
21/08/20	4,69	13,34
22/08/20	4,83	13,67
23/08/20	4,55	13,97
24/08/20	4,17	14,23

Luang Prabang



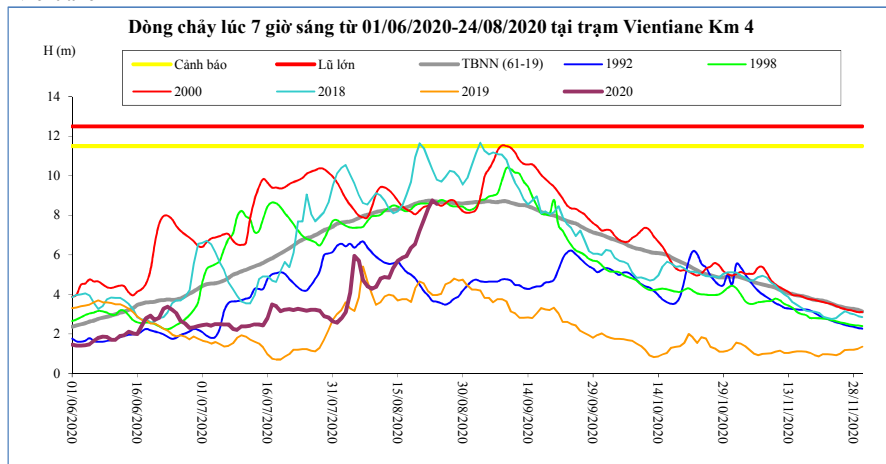
T. gian	H(m)	W(tỷ m ³)
10/08/20	10,08	31,78
11/08/20	10,00	32,35
12/08/20	10,53	32,98
13/08/20	10,35	33,59
14/08/20	10,90	34,26
15/08/20	9,95	34,83
16/08/20	9,87	35,39
17/08/20	10,59	36,03
18/08/20	11,00	36,71
19/08/20	11,18	37,42
20/08/20	11,28	38,13
21/08/20	11,90	38,93
22/08/20	11,65	39,69
23/08/20	11,50	40,43
24/08/20	11,36	41,16

Chiang Khan Vị trí sau hồ Xayabury



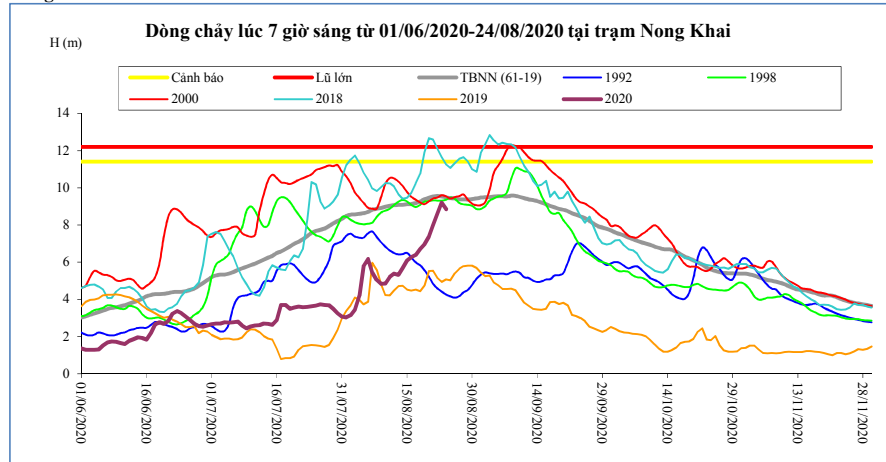
T. gian	H(m)	W(tỷ m ³)
10/08/20	8,02	16,89
11/08/20	8,10	17,31
12/08/20	8,04	17,73
13/08/20	8,50	18,19
14/08/20	8,56	18,66
15/08/20	8,65	19,15
16/08/20	8,68	19,63
17/08/20	9,06	20,16
18/08/20	9,32	20,72
19/08/20	9,70	21,33
20/08/20	10,20	22,00
21/08/20	10,56	22,73
22/08/20	11,23	23,56
23/08/20	10,70	24,31
24/08/20	10,56	25,04

Vientiane Km 4



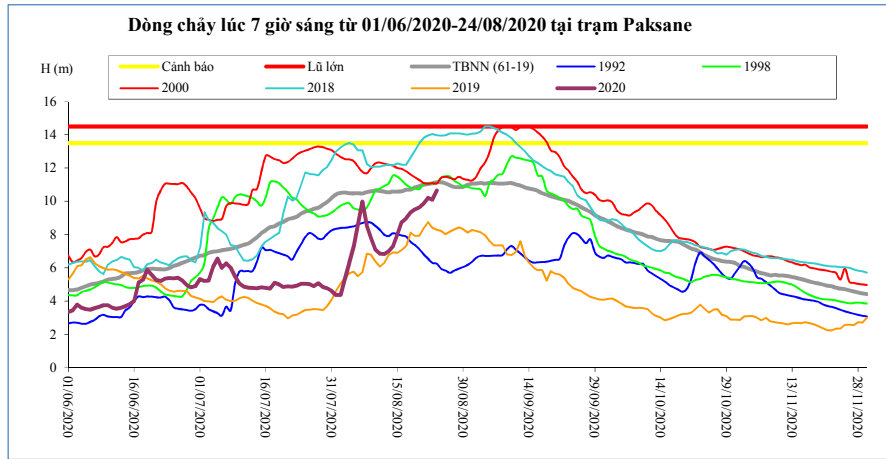
T. gian	H(m)	W(tỷ m ³)
10/08/20	4,38	18,56
11/08/20	4,80	19,04
12/08/20	4,88	19,50
13/08/20	4,84	20,02
14/08/20	5,35	20,53
15/08/20	5,70	21,07
16/08/20	5,84	21,62
17/08/20	5,92	22,23
18/08/20	6,35	22,89
19/08/20	6,54	23,59
20/08/20	7,20	24,36
21/08/20	7,74	25,17
22/08/20	8,34	26,08
23/08/20	8,75	26,91
24/08/20	8,57	27,74

Nong Khai



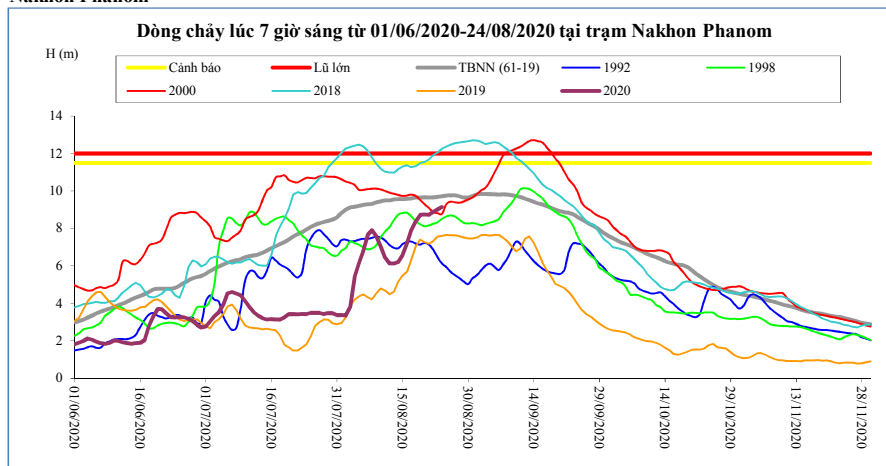
T. gian	H(m)	W(tỷ m ³)
10/08/20	4,85	19,28
11/08/20	5,21	19,79
12/08/20	5,38	20,28
13/08/20	5,32	20,81
14/08/20	5,68	21,35
15/08/20	6,10	21,91
16/08/20	6,26	22,49
17/08/20	6,38	23,14
18/08/20	6,72	23,83
19/08/20	6,96	24,58
20/08/20	7,37	25,38
21/08/20	7,99	26,23
22/08/20	8,62	27,17
23/08/20	9,20	28,05
24/08/20	8,84	28,91

Paksane



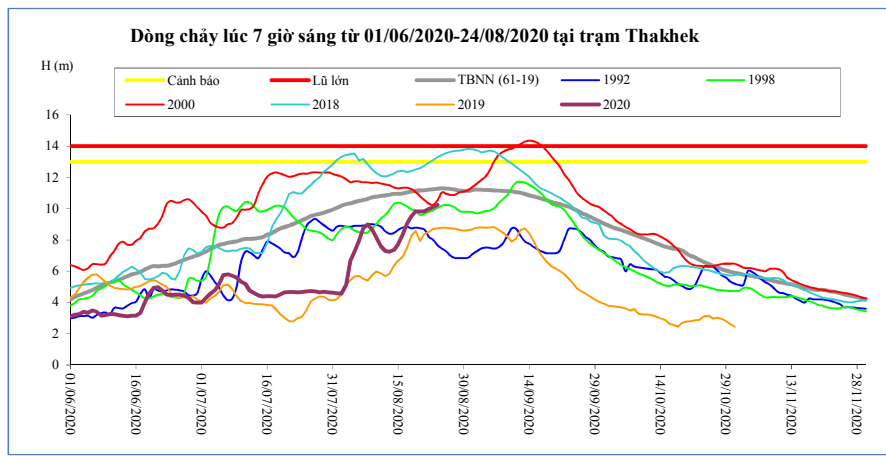
T. gian	H(m)	W(tỷ m ³)
10/08/20	7,11	25,49
11/08/20	6,85	26,22
12/08/20	6,83	26,90
13/08/20	6,99	27,61
14/08/20	7,30	28,33
15/08/20	8,02	29,09
16/08/20	8,76	29,94
17/08/20	8,98	30,89
18/08/20	9,33	31,93
19/08/20	9,52	33,03
20/08/20	9,65	34,17
21/08/20	9,90	35,33
22/08/20	10,22	36,56
23/08/20	10,11	37,77
24/08/20	10,66	38,99

Nakhon Phanom



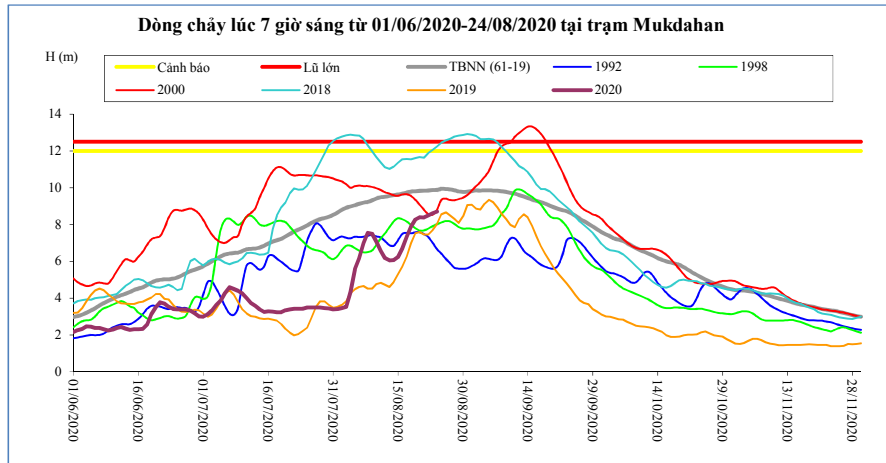
T. gian	H(m)	W(tỷ m ³)
10/08/20	7,03	32,86
11/08/20	6,45	33,84
12/08/20	6,13	34,76
13/08/20	6,12	35,67
14/08/20	6,21	36,60
15/08/20	6,59	37,62
16/08/20	7,22	38,77
17/08/20	7,90	40,09
18/08/20	8,38	41,52
19/08/20	8,72	43,05
20/08/20	8,74	44,59
21/08/20	8,72	46,11
22/08/20	8,88	47,68
23/08/20	9,01	49,29
24/08/20	9,14	50,93

Thakhek



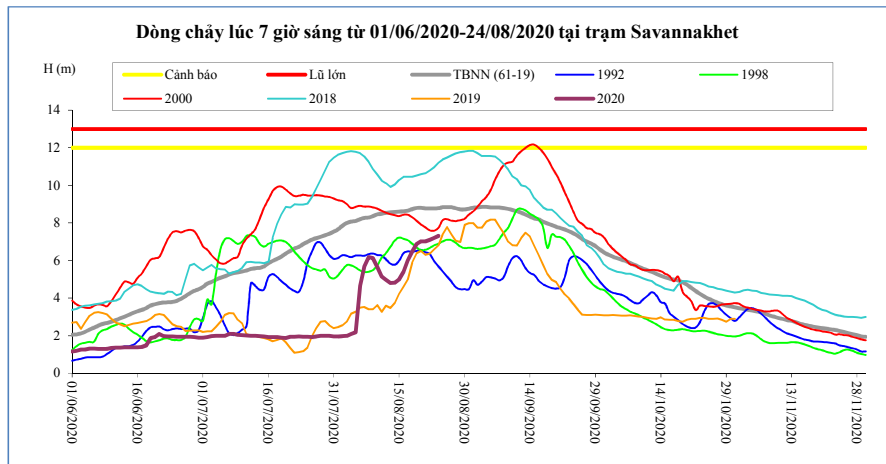
T. gian	H(m)	W(tỷ m ³)
10/08/20	8,16	31,93
11/08/20	7,60	32,87
12/08/20	7,29	33,74
13/08/20	7,26	34,61
14/08/20	7,36	35,50
15/08/20	7,72	36,47
16/08/20	8,33	37,56
17/08/20	9,03	38,82
18/08/20	9,50	40,20
19/08/20	9,83	41,66
20/08/20	9,84	43,13
21/08/20	9,83	44,59
22/08/20	9,97	46,09
23/08/20	10,11	47,63
24/08/20	10,25	49,21

Mukdahan



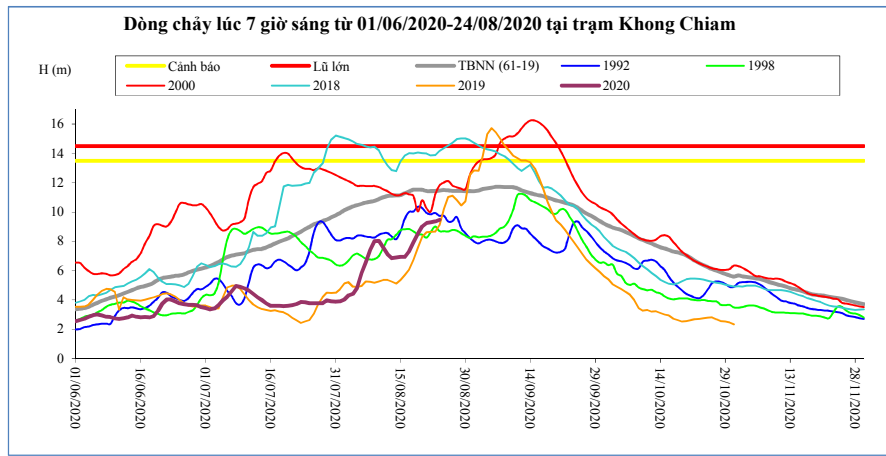
T. gian	H(m)	W(tỷ m ³)
10/08/20	7,07	32,16
11/08/20	6,55	33,13
12/08/20	6,17	34,03
13/08/20	6,04	34,92
14/08/20	6,07	35,83
15/08/20	6,24	36,80
16/08/20	6,69	37,90
17/08/20	7,34	39,15
18/08/20	7,88	40,52
19/08/20	8,28	41,98
20/08/20	8,40	43,46
21/08/20	8,38	44,94
22/08/20	8,48	46,45
23/08/20	8,61	48,01
24/08/20	8,70	49,60

Savannakhet



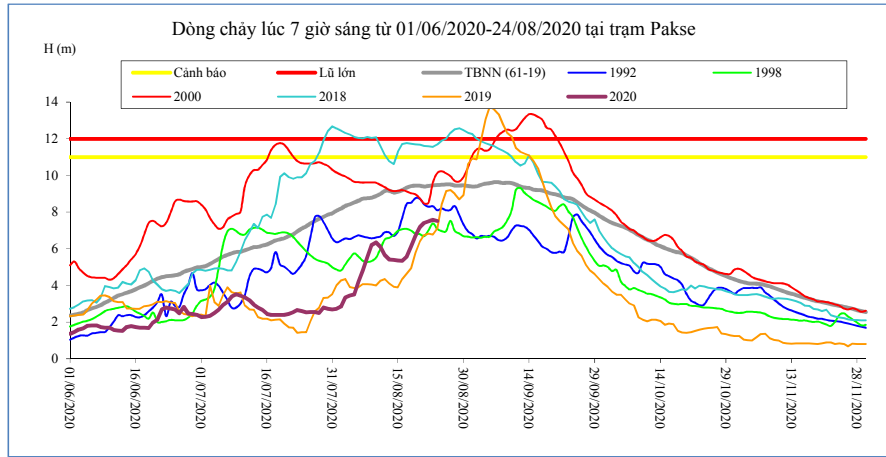
T. gian	H(m)	W(tỷ m ³)
10/08/20	5,65	32,17
11/08/20	5,15	33,14
12/08/20	4,98	34,04
13/08/20	4,80	34,94
14/08/20	4,82	35,85
15/08/20	4,99	36,82
16/08/20	5,40	37,92
17/08/20	6,00	39,16
18/08/20	6,48	40,53
19/08/20	6,89	42,00
20/08/20	7,02	43,47
21/08/20	7,02	44,96
22/08/20	7,10	46,47
23/08/20	7,20	48,03
24/08/20	7,31	49,62

Khong Chiam



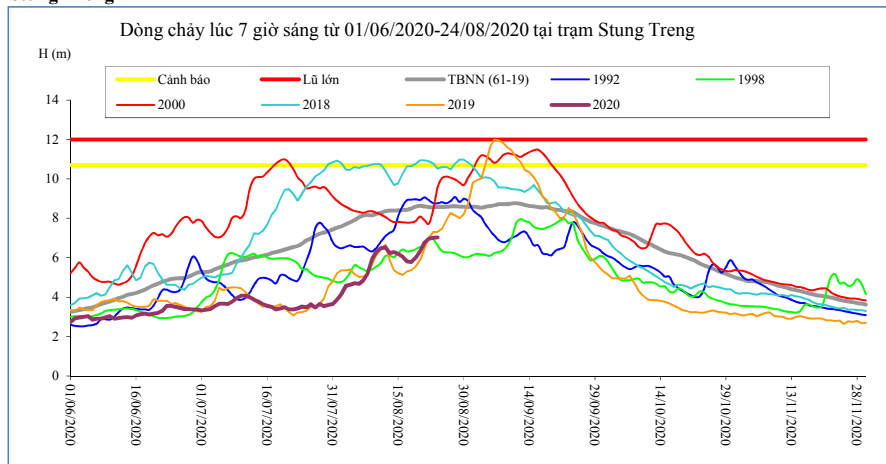
T. gian	H(m)	W(tỷ m ³)
10/08/20	8,02	34,43
11/08/20	7,60	35,65
12/08/20	7,11	36,76
13/08/20	6,84	37,81
14/08/20	6,90	38,87
15/08/20	6,94	39,94
16/08/20	6,94	41,01
17/08/20	7,31	42,16
18/08/20	7,93	43,45
19/08/20	8,53	44,90
20/08/20	9,00	46,45
21/08/20	9,25	48,08
22/08/20	9,29	49,71
23/08/20	9,35	51,36
24/08/20	9,47	53,04

Pakse



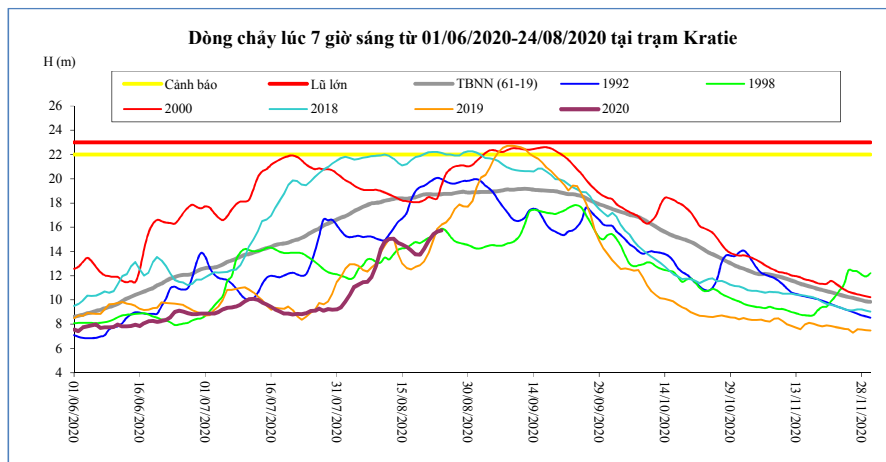
T. gian	H(m)	W(tỷ m ³)
10/08/20	6,35	34,46
11/08/20	6,10	35,74
12/08/20	5,66	36,91
13/08/20	5,42	38,00
14/08/20	5,40	39,10
15/08/20	5,36	40,18
16/08/20	5,34	41,26
17/08/20	5,58	42,40
18/08/20	6,10	43,69
19/08/20	6,70	45,14
20/08/20	7,18	46,74
21/08/20	7,40	48,40
22/08/20	7,49	50,09
23/08/20	7,58	51,81
24/08/20	7,52	53,51

Stung Treng



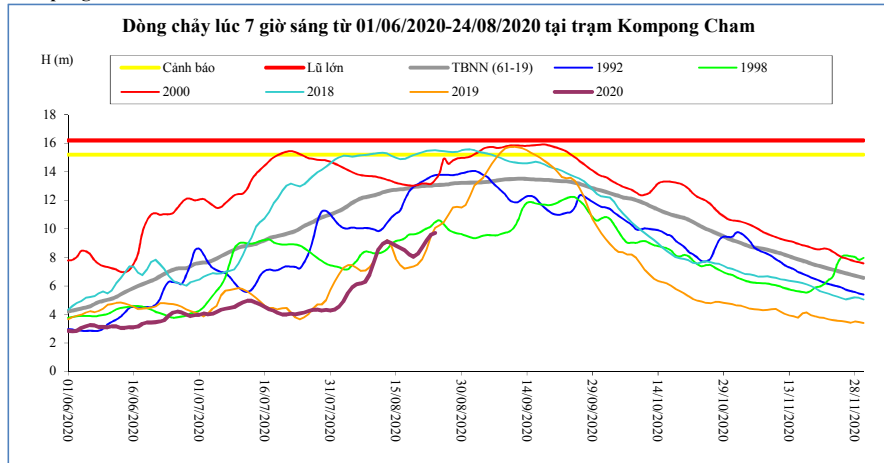
T. gian	H(m)	W(tỷ m ³)
10/08/20	6,30	37,84
11/08/20	6,48	39,50
12/08/20	6,53	41,19
13/08/20	6,24	42,89
14/08/20	6,29	44,51
15/08/20	6,18	46,09
16/08/20	6,06	47,63
17/08/20	5,82	49,12
18/08/20	5,78	50,55
19/08/20	6,00	51,99
20/08/20	6,35	53,57
21/08/20	6,76	55,28
22/08/20	6,97	57,12
23/08/20	7,01	59,03
24/08/20	7,03	60,95

Kratie



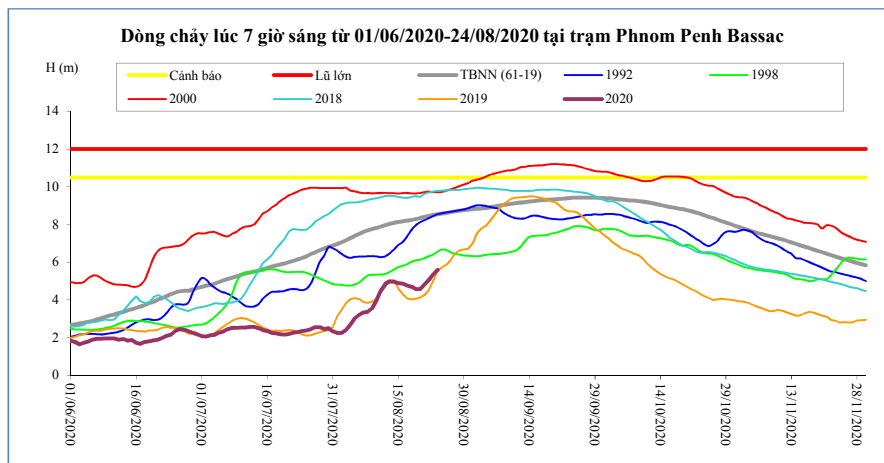
T. gian	H(m)	W(tỷ m ³)
10/08/20	14,14	38,29
11/08/20	14,80	39,99
12/08/20	15,03	41,76
13/08/20	15,05	43,53
14/08/20	14,75	45,22
15/08/20	14,58	46,87
16/08/20	14,38	48,47
17/08/20	14,11	50,00
18/08/20	13,75	51,45
19/08/20	13,74	52,90
20/08/20	14,25	54,46
21/08/20	14,88	56,19
22/08/20	15,39	58,05
23/08/20	15,64	59,97
24/08/20	15,74	61,93

Kompong Cham



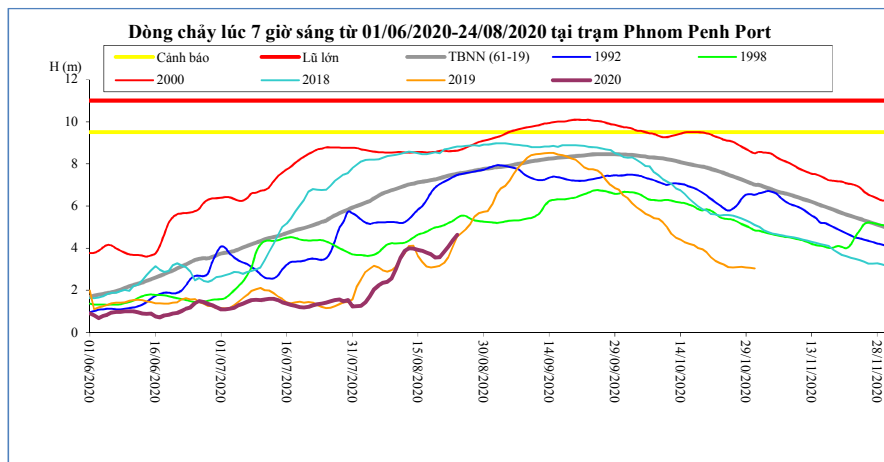
T. gian	H(m)	Hbq(m)
10/08/20	7,70	12,36
11/08/20	8,54	12,43
12/08/20	8,96	12,56
13/08/20	9,14	12,64
14/08/20	9,00	12,70
15/08/20	8,82	12,74
16/08/20	8,66	12,77
17/08/20	8,50	12,80
18/08/20	8,22	12,85
19/08/20	8,04	12,93
20/08/20	8,23	12,97
21/08/20	8,70	13,00
22/08/20	9,20	13,02
23/08/20	9,58	13,03
24/08/20	9,71	13,06

Phnom Penh Bassac



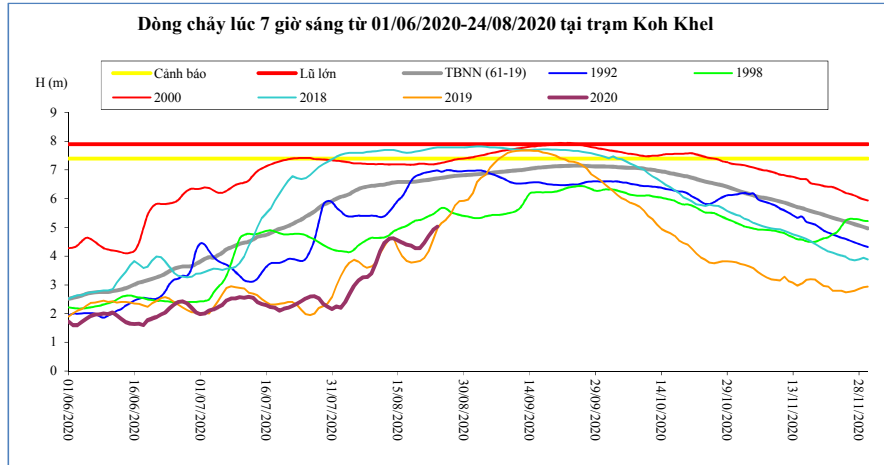
T. gian	H(m)	Hbq(m)
10/08/20	3,97	7,82
11/08/20	4,50	7,89
12/08/20	4,85	7,96
13/08/20	4,98	8,03
14/08/20	4,97	8,08
15/08/20	4,90	8,13
16/08/20	4,86	8,17
17/08/20	4,76	8,21
18/08/20	4,69	8,24
19/08/20	4,57	8,29
20/08/20	4,57	8,34
21/08/20	4,81	8,40
22/08/20	5,05	8,45
23/08/20	5,35	8,50
24/08/20	5,60	8,55

Phnom Penh Port



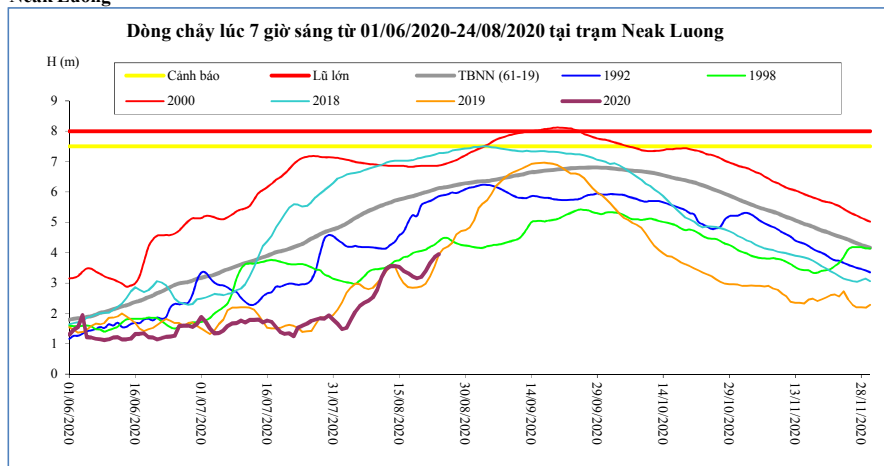
T. gian	H(m)	Hbq(m)
10/08/20	2,99	6,81
11/08/20	3,52	6,88
12/08/20	3,87	6,96
13/08/20	3,99	7,02
14/08/20	3,98	7,06
15/08/20	3,92	7,12
16/08/20	3,88	7,15
17/08/20	3,78	7,19
18/08/20	3,71	7,23
19/08/20	3,56	7,26
20/08/20	3,57	7,32
21/08/20	3,83	7,38
22/08/20	4,07	7,44
23/08/20	4,37	7,48
24/08/20	4,63	7,53

Koh Khel



T. gian	H(m)	Hbq(m)
10/08/20	3,78	6,46
11/08/20	4,18	6,48
12/08/20	4,48	6,50
13/08/20	4,61	6,53
14/08/20	4,62	6,56
15/08/20	4,55	6,58
16/08/20	4,48	6,58
17/08/20	4,40	6,58
18/08/20	4,36	6,58
19/08/20	4,28	6,60
20/08/20	4,28	6,62
21/08/20	4,47	6,64
22/08/20	4,70	6,66
23/08/20	4,91	6,68
24/08/20	5,03	6,71

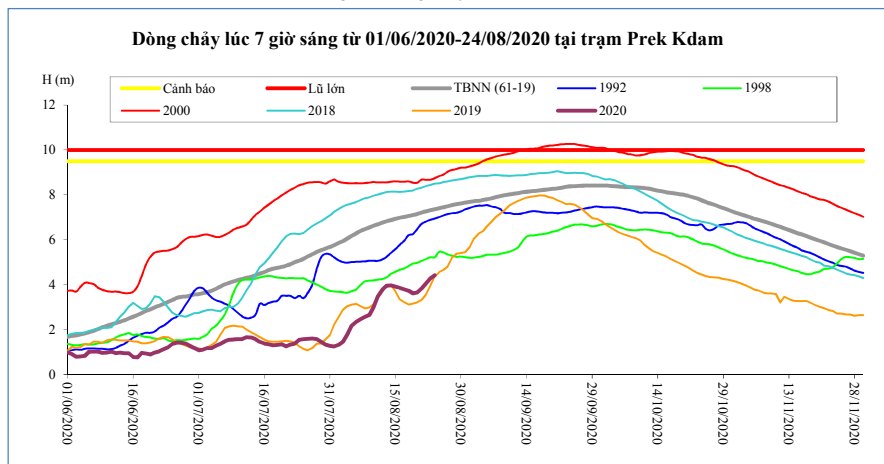
Neak Luong



T. gian	H(m)	Hbq(m)
10/08/20	2,78	5,50
11/08/20	3,20	5,55
12/08/20	3,46	5,61
13/08/20	3,56	5,65
14/08/20	3,56	5,71
15/08/20	3,52	5,75
16/08/20	3,40	5,78
17/08/20	3,32	5,82
18/08/20	3,22	5,86
19/08/20	3,16	5,90
20/08/20	3,20	5,95
21/08/20	3,40	5,99
22/08/20	3,65	6,03
23/08/20	3,85	6,08
24/08/20	3,95	6,13

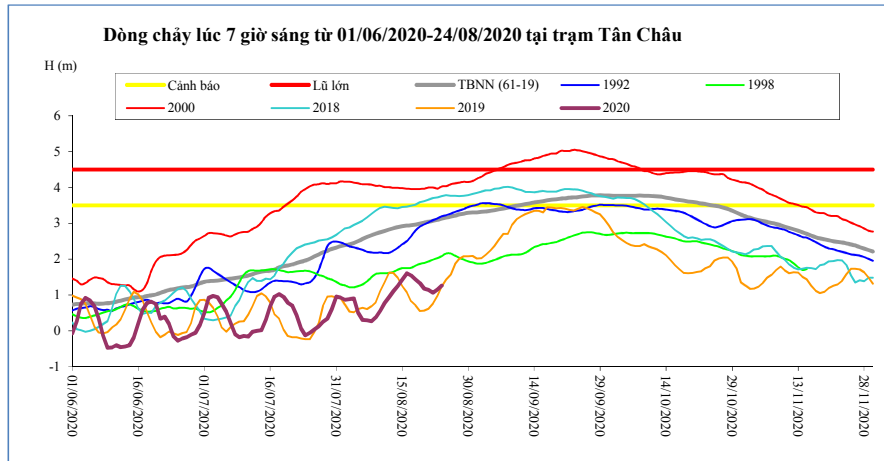
Prek Kdam

Sông Mê Công chảy vào Biển Hồ.



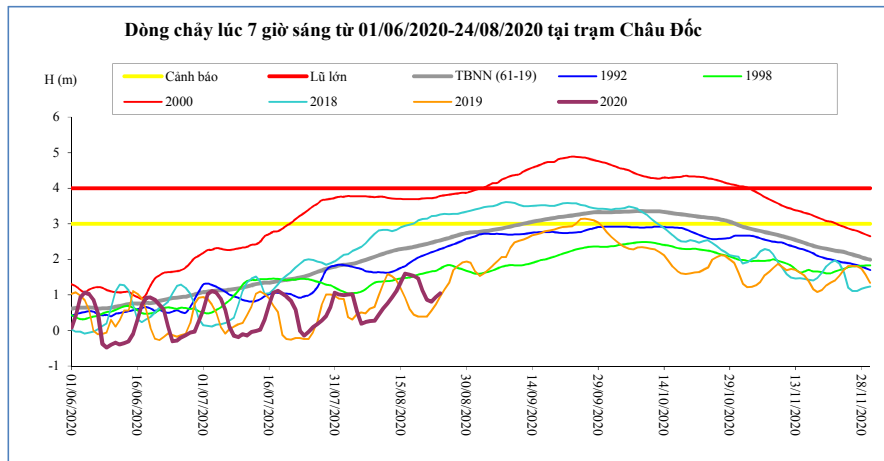
T. gian	H(m)	W (tỷ m ³)	Biển Hồ
10/08/20	2,98	1,62	
11/08/20	3,48	1,77	
12/08/20	3,79	1,92	
13/08/20	3,95	2,10	
14/08/20	3,97	2,45	
15/08/20	3,91	2,80	
16/08/20	3,85	3,42	
17/08/20	3,79	3,50	
18/08/20	3,73	3,62	
19/08/20	3,62	3,79	
20/08/20	3,66	4,20	
21/08/20	3,83	4,25	
22/08/20	4,06	4,66	
23/08/20	4,28	5,07	
24/08/20	4,42	5,53	

Tân Châu



T. gian	H(m)	Hbq(m)
10/08/20	0,57	2,75
11/08/20	0,78	2,79
12/08/20	0,95	2,83
13/08/20	1,11	2,87
14/08/20	1,25	2,90
15/08/20	1,43	2,92
16/08/20	1,61	2,94
17/08/20	1,55	2,95
18/08/20	1,43	2,97
19/08/20	1,33	2,99
20/08/20	1,18	3,02
21/08/20	1,15	3,05
22/08/20	1,07	3,07
23/08/20	1,16	3,10
24/08/20	1,26	3,14

Châu Đốc



T. gian	H(m)	Hbq(m)
10/08/20	0,44	2,11
11/08/20	0,62	2,15
12/08/20	0,76	2,20
13/08/20	0,94	2,23
14/08/20	1,11	2,27
15/08/20	1,35	2,29
16/08/20	1,60	2,31
17/08/20	1,57	2,33
18/08/20	1,53	2,35
19/08/20	1,46	2,38
20/08/20	1,13	2,41
21/08/20	0,87	2,44
22/08/20	0,81	2,47
23/08/20	0,94	2,50
24/08/20	1,05	2,53

Ghi chú:

-: Không có số liệu

H(m): Mức nước lúc 7 giờ sáng lấy theo số liệu thực đo của MRC. W (tỷ m3): Ước tính của Viện Quy hoạch Thủy lợi Miền Nam.
 W là tổng lượng nước kể từ ngày 1 tháng 6. Riêng Biển Hồ là dung tích hiện tại. Hbq (m): Mức nước trung bình nhiều năm.

BẢN ĐỒ VỊ TRÍ CÁC TRẠM DỌC DÒNG CHÍNH MÊ CÔNG

