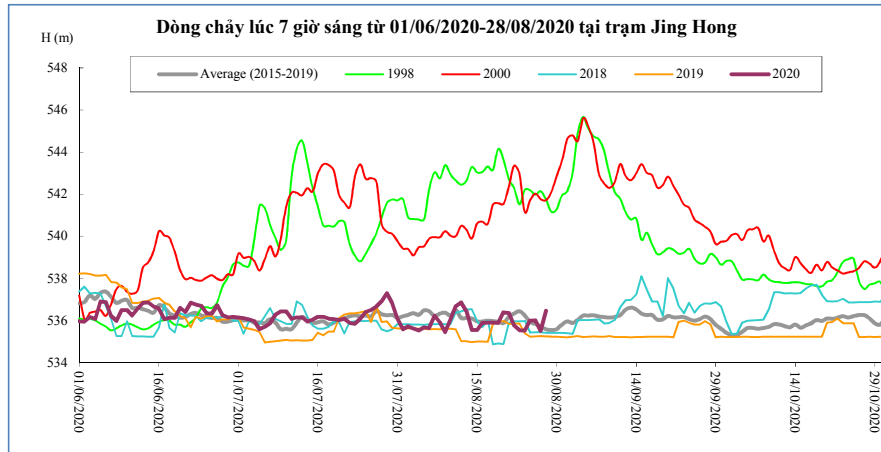


DIỄN BIẾN DÒNG CHẢY TẠI CÁC TRẠM TRÊN DÒNG CHÍNH SÔNG MÊ CÔNG
Dòng chảy lúc 7 giờ sáng từ 01/06/2020-28/08/2020

Jing Hong

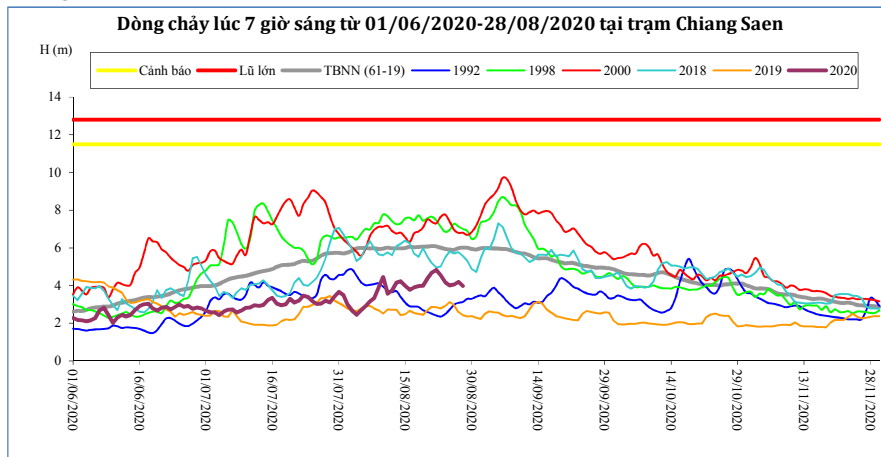
Hôm nay

28/08/20



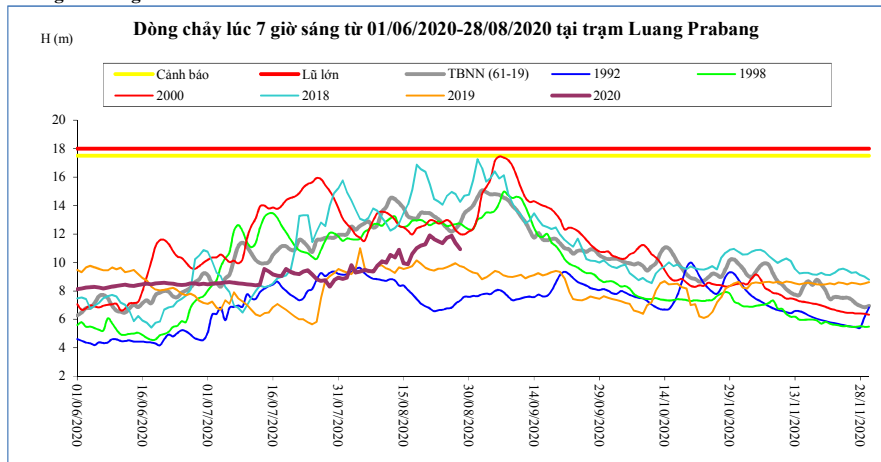
T. gian	H(m)	W(tỷ m ³)
14/08/20	535,57	7,47
15/08/20	535,56	7,54
16/08/20	535,90	7,62
17/08/20	535,92	7,70
18/08/20	535,92	7,78
19/08/20	535,90	7,87
20/08/20	536,40	7,97
21/08/20	536,37	8,08
22/08/20	535,76	8,15
23/08/20	535,55	8,22
24/08/20	535,54	8,29
25/08/20	536,00	8,38
26/08/20	536,02	8,46
27/08/20	535,52	8,53
28/08/20	536,47	8,64

Chiang Saen



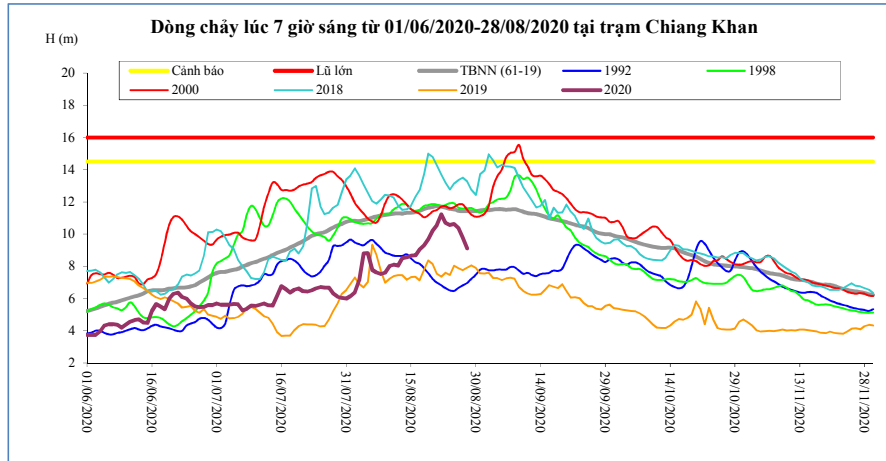
T. gian	H(m)	W(tỷ m ³)
14/08/20	4,23	11,54
15/08/20	3,99	11,79
16/08/20	3,77	12,01
17/08/20	3,90	12,25
18/08/20	3,98	12,49
19/08/20	3,99	12,73
20/08/20	4,38	13,02
21/08/20	4,69	13,34
22/08/20	4,83	13,67
23/08/20	4,55	13,97
24/08/20	4,17	14,23
25/08/20	4,00	14,48
26/08/20	4,06	14,73
27/08/20	4,20	15,00
28/08/20	3,98	15,24

Luang Prabang



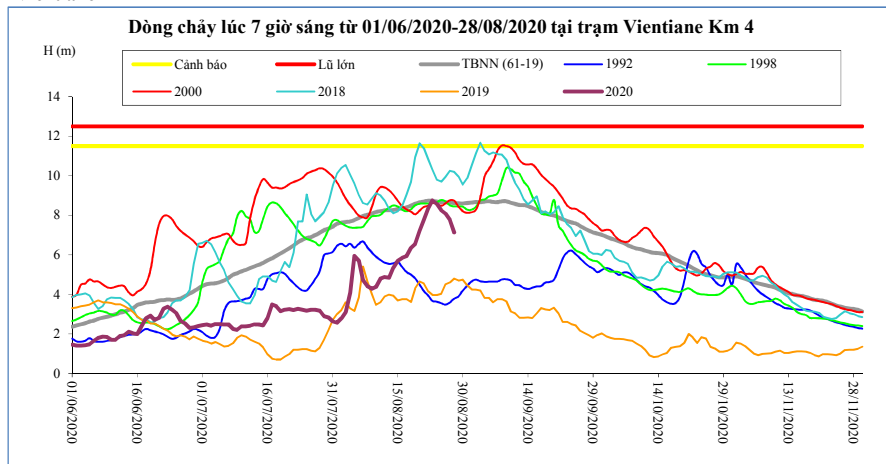
T. gian	H(m)	W(tỷ m ³)
14/08/20	10,90	34,26
15/08/20	9,95	34,83
16/08/20	9,87	35,39
17/08/20	10,59	36,03
18/08/20	11,00	36,71
19/08/20	11,18	37,42
20/08/20	11,28	38,13
21/08/20	11,90	38,93
22/08/20	11,65	39,69
23/08/20	11,50	40,43
24/08/20	11,36	41,16
25/08/20	11,74	41,93
26/08/20	11,87	42,72
27/08/20	11,35	43,45
28/08/20	10,94	44,12

Chiang Khan Vị trí sau hồ Xayabury



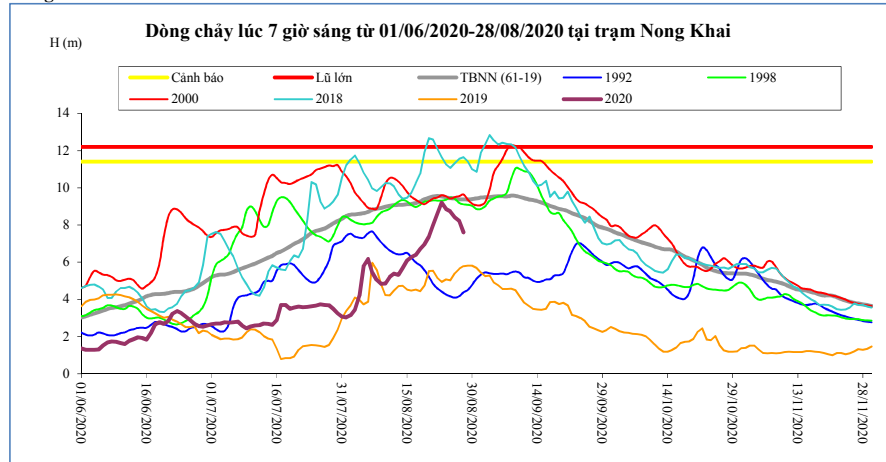
T. gian	H(m)	W(tỷ m ³)
14/08/20	8,56	18,66
15/08/20	8,65	19,15
16/08/20	8,68	19,63
17/08/20	9,06	20,16
18/08/20	9,32	20,72
19/08/20	9,70	21,33
20/08/20	10,20	22,00
21/08/20	10,56	22,73
22/08/20	11,23	23,56
23/08/20	10,70	24,31
24/08/20	10,56	25,04
25/08/20	10,62	25,78
26/08/20	10,36	26,48
27/08/20	9,78	27,10
28/08/20	9,12	27,63

Vientiane Km 4



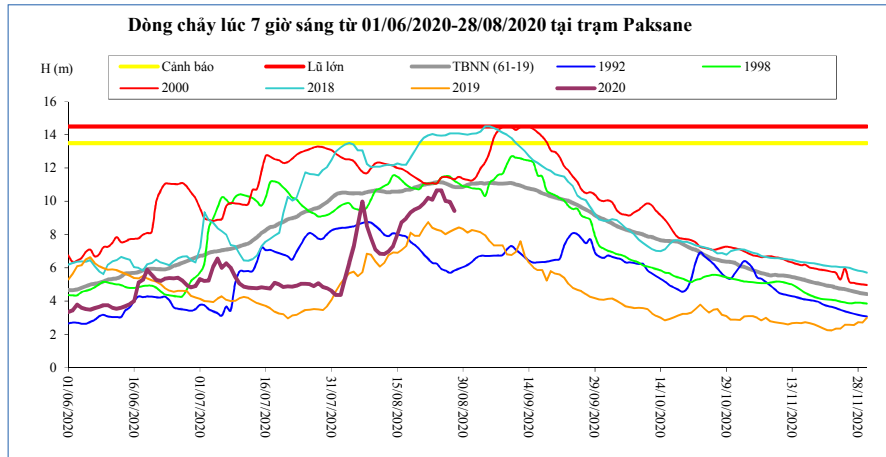
T. gian	H(m)	W(tỷ m ³)
14/08/20	5,35	20,53
15/08/20	5,70	21,07
16/08/20	5,84	21,62
17/08/20	5,92	22,23
18/08/20	6,35	22,89
19/08/20	6,54	23,59
20/08/20	7,20	24,36
21/08/20	7,74	25,17
22/08/20	8,34	26,08
23/08/20	8,75	26,91
24/08/20	8,57	27,74
25/08/20	8,25	28,57
26/08/20	8,08	29,38
27/08/20	7,75	30,10
28/08/20	7,13	30,74

Nong Khai



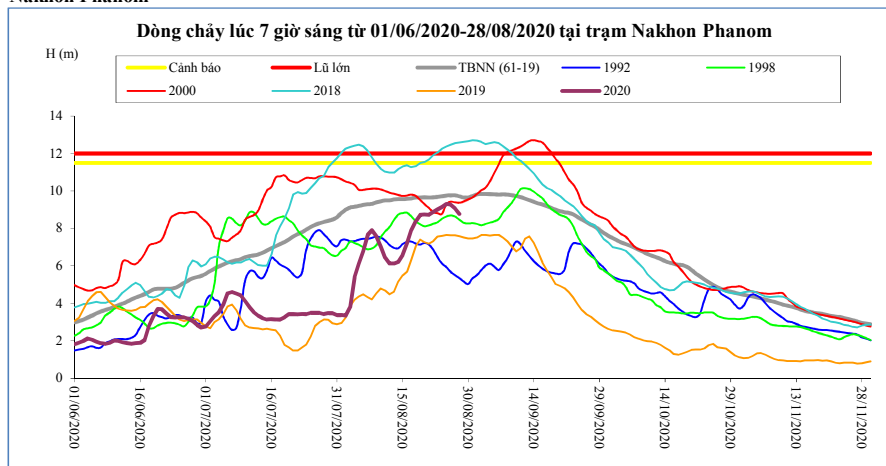
T. gian	H(m)	W(tỷ m ³)
14/08/20	5,68	21,35
15/08/20	6,10	21,91
16/08/20	6,26	22,49
17/08/20	6,38	23,14
18/08/20	6,72	23,83
19/08/20	6,96	24,58
20/08/20	7,37	25,38
21/08/20	7,99	26,23
22/08/20	8,62	27,17
23/08/20	9,20	28,05
24/08/20	8,84	28,91
25/08/20	8,73	29,79
26/08/20	8,42	30,64
27/08/20	8,22	31,41
28/08/20	7,60	32,09

Paksane



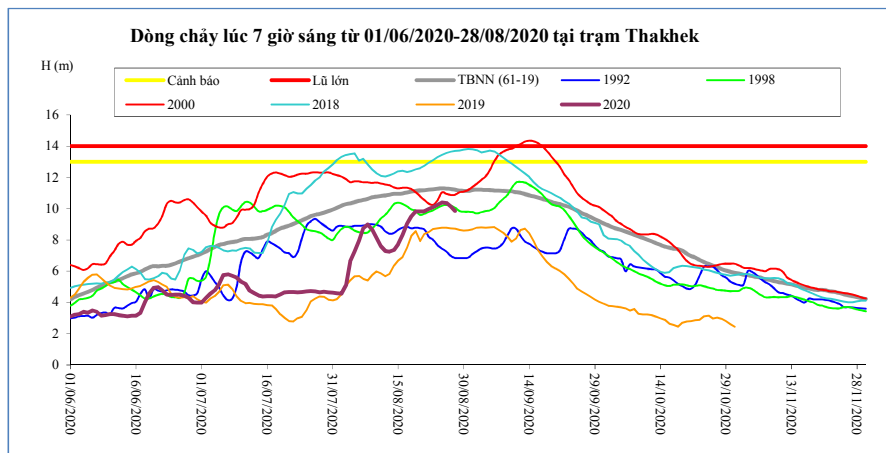
T. gian	H(m)	W(tỷ m ³)
14/08/20	7,30	28,33
15/08/20	8,02	29,09
16/08/20	8,76	29,94
17/08/20	8,98	30,89
18/08/20	9,33	31,93
19/08/20	9,52	33,03
20/08/20	9,65	34,17
21/08/20	9,90	35,33
22/08/20	10,22	36,56
23/08/20	10,11	37,77
24/08/20	10,66	38,99
25/08/20	10,67	40,24
26/08/20	10,03	41,46
27/08/20	9,96	42,62
28/08/20	9,43	43,70

Nakhon Phanom



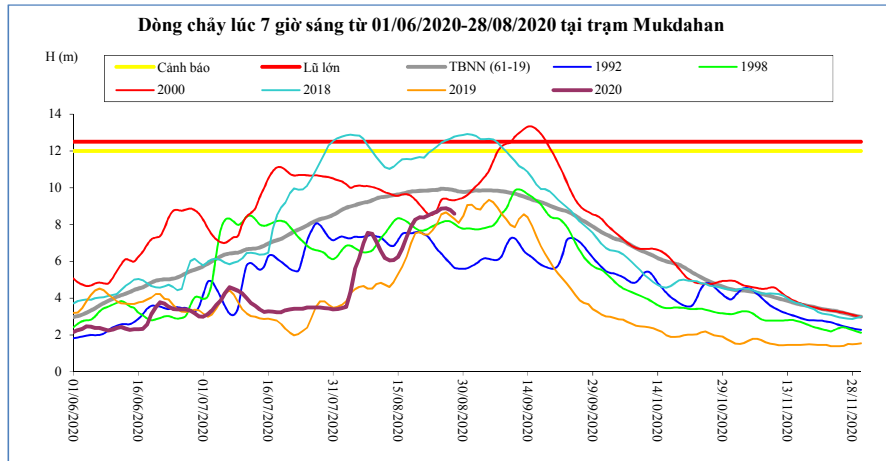
T. gian	H(m)	W(tỷ m ³)
14/08/20	6,21	36,60
15/08/20	6,59	37,62
16/08/20	7,22	38,77
17/08/20	7,90	40,09
18/08/20	8,38	41,52
19/08/20	8,72	43,05
20/08/20	8,74	44,59
21/08/20	8,72	46,11
22/08/20	8,88	47,68
23/08/20	9,01	49,29
24/08/20	9,14	50,93
25/08/20	9,30	52,62
26/08/20	9,27	54,30
27/08/20	9,07	55,92
28/08/20	8,77	57,46

Thakhek



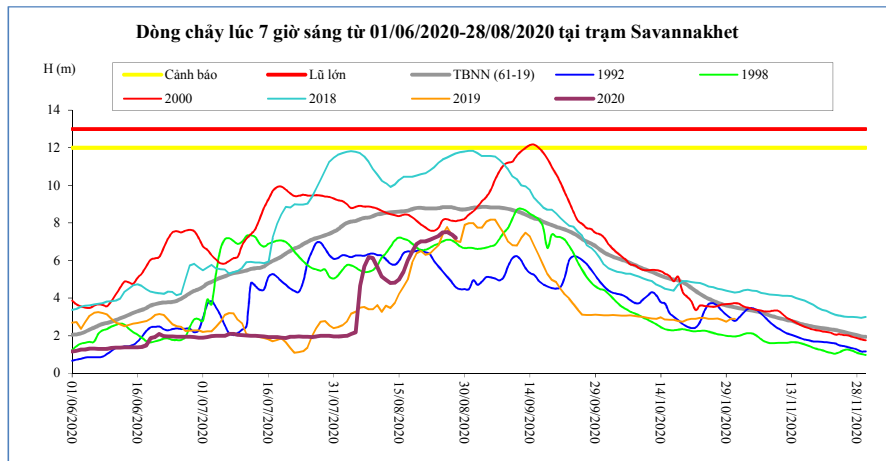
T. gian	H(m)	W(tỷ m ³)
14/08/20	7,36	35,50
15/08/20	7,72	36,47
16/08/20	8,33	37,56
17/08/20	9,03	38,82
18/08/20	9,50	40,20
19/08/20	9,83	41,66
20/08/20	9,84	43,13
21/08/20	9,83	44,59
22/08/20	9,97	46,09
23/08/20	10,11	47,63
24/08/20	10,25	49,21
25/08/20	10,40	50,83
26/08/20	10,37	52,44
27/08/20	10,14	53,98
28/08/20	9,86	55,45

Mukdahan



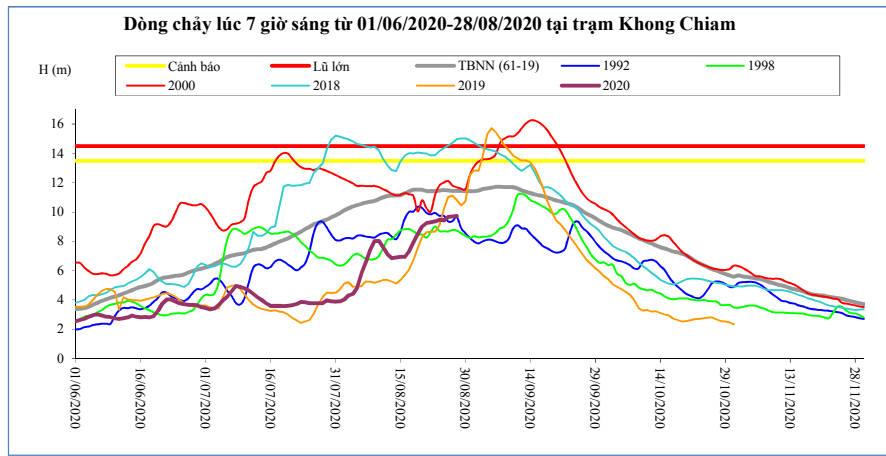
T. gian	H(m)	W(tỷ m ³)
14/08/20	6,07	35,83
15/08/20	6,24	36,80
16/08/20	6,69	37,90
17/08/20	7,34	39,15
18/08/20	7,88	40,52
19/08/20	8,28	41,98
20/08/20	8,40	43,46
21/08/20	8,38	44,94
22/08/20	8,48	46,45
23/08/20	8,61	48,01
24/08/20	8,70	49,60
25/08/20	8,86	51,22
26/08/20	8,89	52,85
27/08/20	8,79	54,41
28/08/20	8,58	55,92

Savannakhet



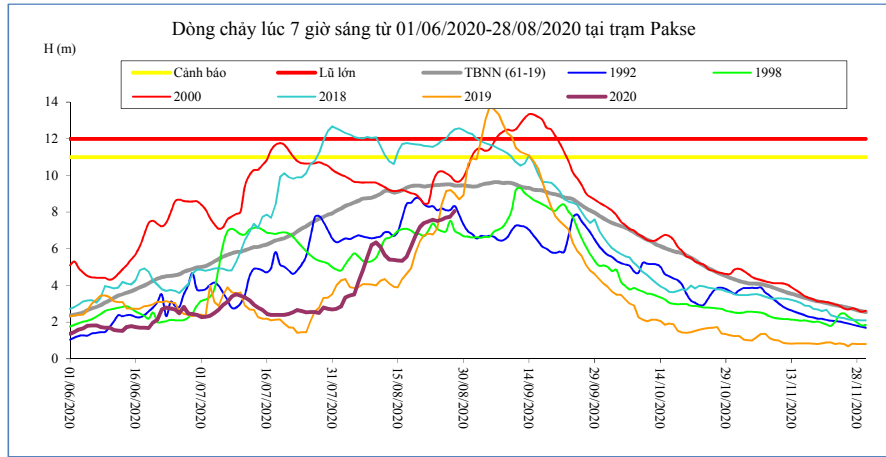
T. gian	H(m)	W(tỷ m ³)
14/08/20	4,82	35,85
15/08/20	4,99	36,82
16/08/20	5,40	37,92
17/08/20	6,00	39,16
18/08/20	6,48	40,53
19/08/20	6,89	42,00
20/08/20	7,02	43,47
21/08/20	7,02	44,96
22/08/20	7,10	46,47
23/08/20	7,20	48,03
24/08/20	7,31	49,62
25/08/20	7,49	51,25
26/08/20	7,52	52,87
27/08/20	7,40	54,44
28/08/20	7,20	55,95

Khong Chiam



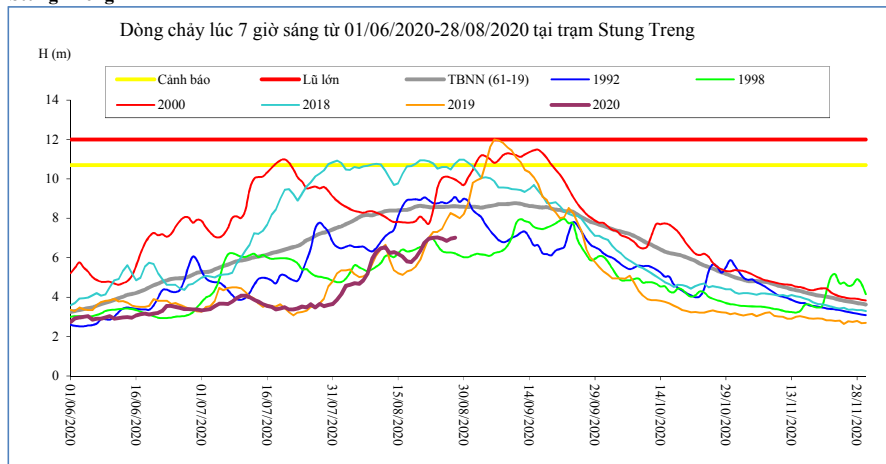
T. gian	H(m)	W(tỷ m ³)
14/08/20	6,90	38,87
15/08/20	6,94	39,94
16/08/20	6,94	41,01
17/08/20	7,31	42,16
18/08/20	7,93	43,45
19/08/20	8,53	44,90
20/08/20	9,00	46,45
21/08/20	9,25	48,08
22/08/20	9,29	49,71
23/08/20	9,35	51,36
24/08/20	9,47	53,04
25/08/20	9,43	54,71
26/08/20	9,67	56,44
27/08/20	9,68	58,18
28/08/20	9,73	59,93

Pakse



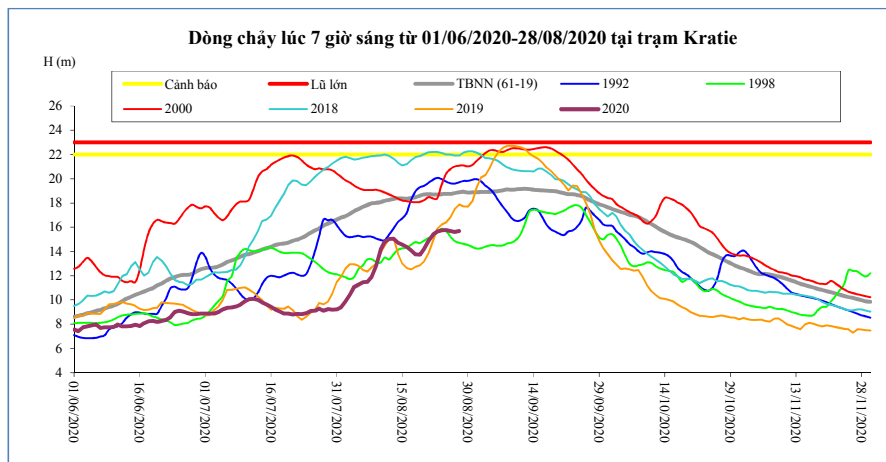
T. gian	H(m)	W(tỷ m ³)
14/08/20	5,40	39,10
15/08/20	5,36	40,18
16/08/20	5,34	41,26
17/08/20	5,58	42,40
18/08/20	6,10	43,69
19/08/20	6,70	45,14
20/08/20	7,18	46,74
21/08/20	7,40	48,40
22/08/20	7,49	50,09
23/08/20	7,58	51,81
24/08/20	7,52	53,51
25/08/20	7,59	55,23
26/08/20	7,70	56,99
27/08/20	7,75	58,76
28/08/20	8,06	60,63

Stung Treng



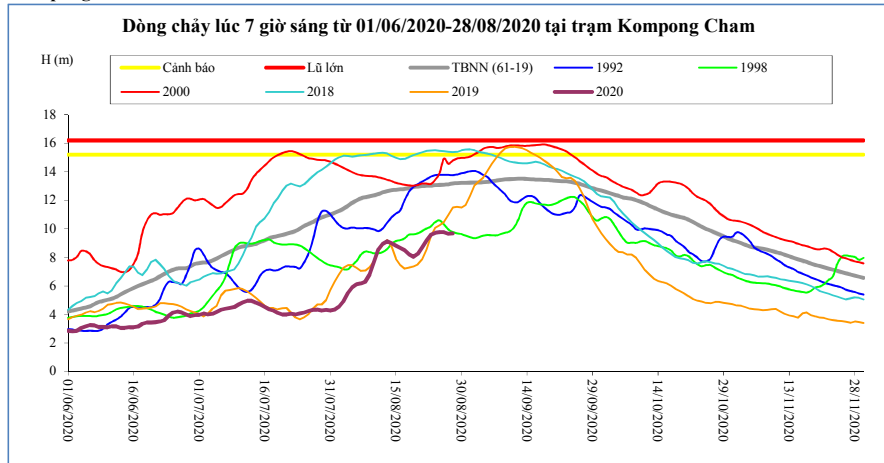
T. gian	H(m)	W(tỷ m ³)
14/08/20	6,29	44,51
15/08/20	6,18	46,09
16/08/20	6,06	47,63
17/08/20	5,82	49,12
18/08/20	5,78	50,55
19/08/20	6,00	51,99
20/08/20	6,35	53,57
21/08/20	6,76	55,28
22/08/20	6,97	57,12
23/08/20	7,01	59,03
24/08/20	7,03	60,95
25/08/20	6,96	62,88
26/08/20	6,86	64,80
27/08/20	6,97	66,70
28/08/20	7,01	68,63

Kratie



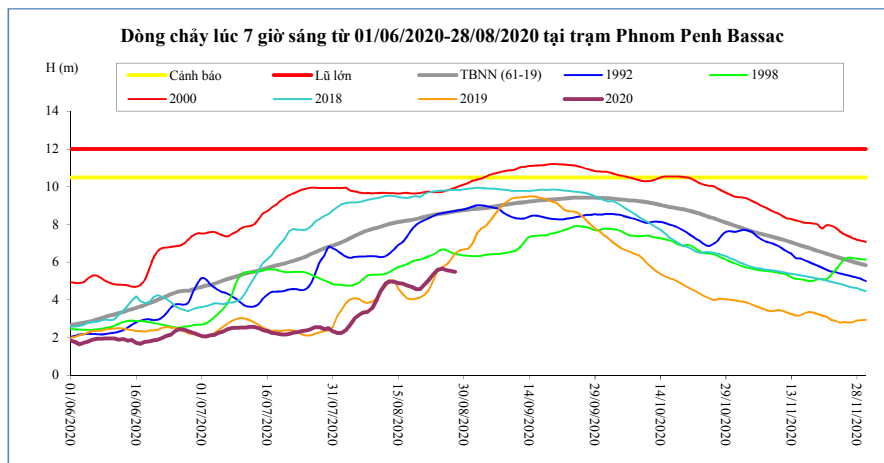
T. gian	H(m)	W(tỷ m ³)
14/08/20	14,75	45,22
15/08/20	14,58	46,87
16/08/20	14,38	48,47
17/08/20	14,11	50,00
18/08/20	13,75	51,45
19/08/20	13,74	52,90
20/08/20	14,25	54,46
21/08/20	14,88	56,19
22/08/20	15,39	58,05
23/08/20	15,64	59,97
24/08/20	15,74	61,93
25/08/20	15,77	63,89
26/08/20	15,70	65,83
27/08/20	15,60	67,75
28/08/20	15,69	69,69

Kompong Cham



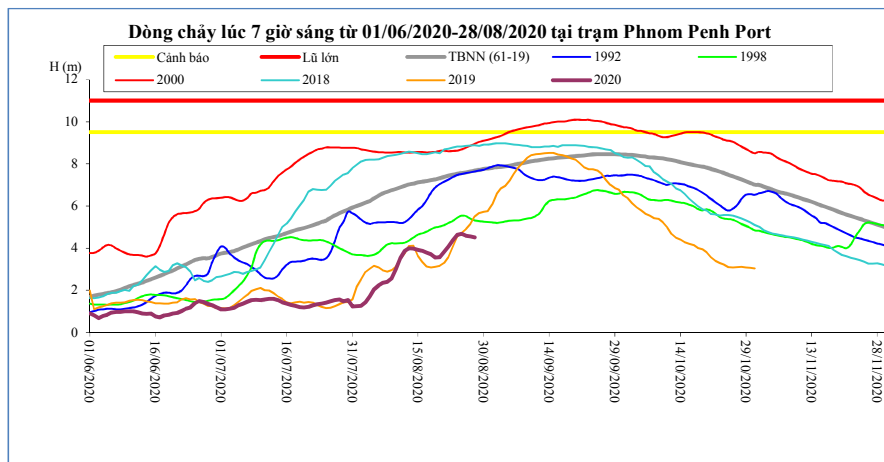
T. gian	H(m)	Hbq(m)
14/08/20	9,00	12,70
15/08/20	8,82	12,74
16/08/20	8,66	12,77
17/08/20	8,50	12,80
18/08/20	8,22	12,85
19/08/20	8,04	12,93
20/08/20	8,23	12,97
21/08/20	8,70	13,00
22/08/20	9,20	13,02
23/08/20	9,58	13,03
24/08/20	9,71	13,06
25/08/20	9,78	13,08
26/08/20	9,76	13,10
27/08/20	9,66	13,12
28/08/20	9,68	13,19

Phnom Penh Bassac



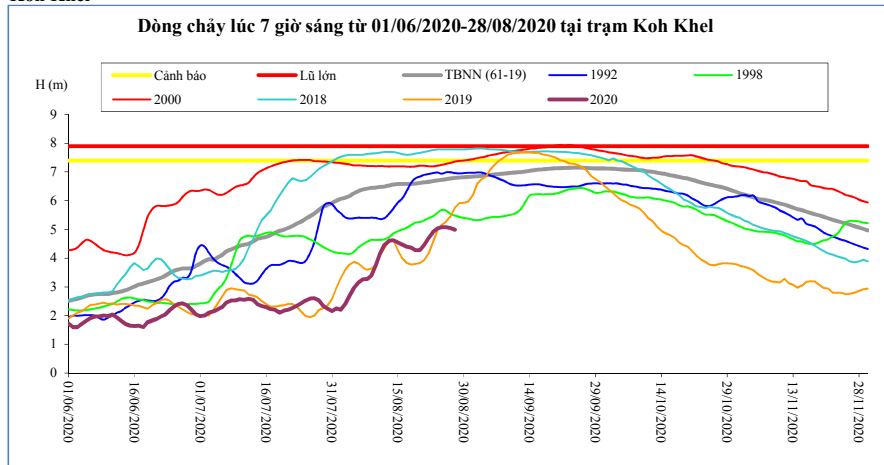
T. gian	H(m)	Hbq(m)
14/08/20	4,97	8,08
15/08/20	4,90	8,13
16/08/20	4,86	8,17
17/08/20	4,76	8,21
18/08/20	4,69	8,24
19/08/20	4,57	8,29
20/08/20	4,57	8,34
21/08/20	4,81	8,40
22/08/20	5,05	8,45
23/08/20	5,35	8,50
24/08/20	5,60	8,55
25/08/20	5,66	8,58
26/08/20	5,57	8,61
27/08/20	5,54	8,65
28/08/20	5,50	8,70

Phnom Penh Port



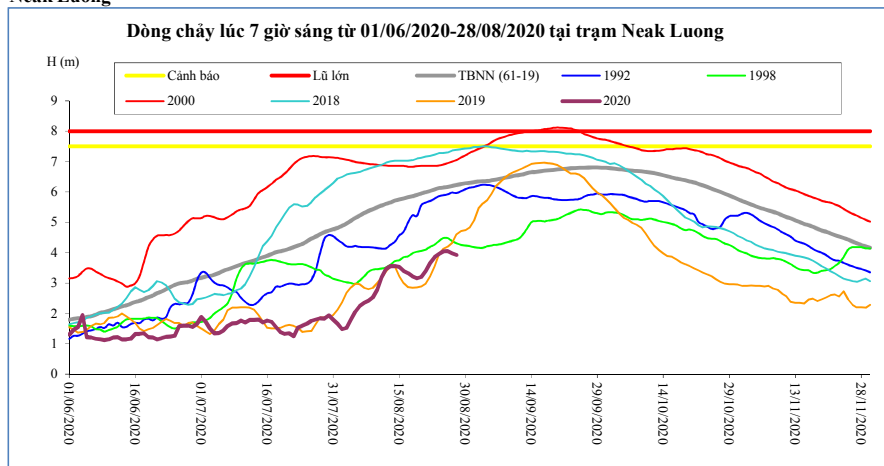
T. gian	H(m)	Hbq(m)
14/08/20	3,98	7,06
15/08/20	3,92	7,12
16/08/20	3,88	7,15
17/08/20	3,78	7,19
18/08/20	3,71	7,23
19/08/20	3,56	7,26
20/08/20	3,57	7,32
21/08/20	3,83	7,38
22/08/20	4,07	7,44
23/08/20	4,37	7,48
24/08/20	4,63	7,53
25/08/20	4,68	7,56
26/08/20	4,59	7,59
27/08/20	4,56	7,64
28/08/20	4,51	7,69

Koh Khel



T. gian	H(m)	Hbq(m)
14/08/20	4,62	6,56
15/08/20	4,55	6,58
16/08/20	4,48	6,58
17/08/20	4,40	6,58
18/08/20	4,36	6,58
19/08/20	4,28	6,60
20/08/20	4,28	6,62
21/08/20	4,47	6,64
22/08/20	4,70	6,66
23/08/20	4,91	6,68
24/08/20	5,03	6,71
25/08/20	5,08	6,73
26/08/20	5,08	6,75
27/08/20	5,04	6,77
28/08/20	4,99	6,79

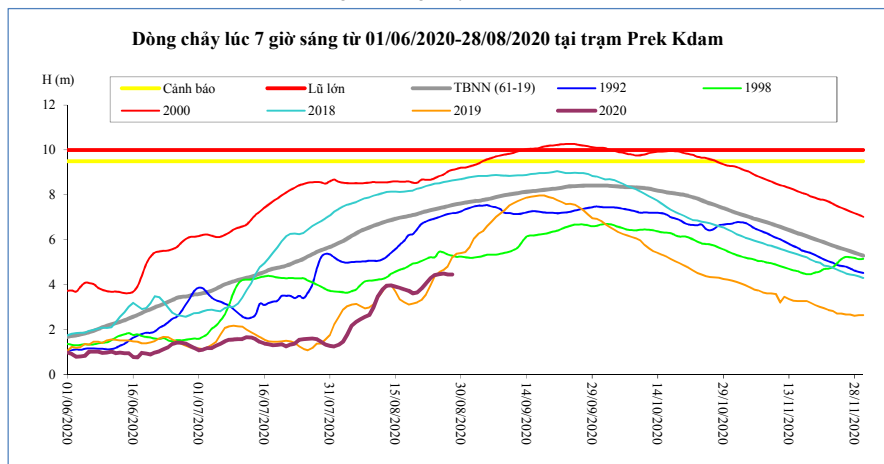
Neak Luong



T. gian	H(m)	Hbq(m)
14/08/20	3,56	5,71
15/08/20	3,52	5,75
16/08/20	3,40	5,78
17/08/20	3,32	5,82
18/08/20	3,22	5,86
19/08/20	3,16	5,90
20/08/20	3,20	5,95
21/08/20	3,40	5,99
22/08/20	3,65	6,03
23/08/20	3,85	6,08
24/08/20	3,95	6,13
25/08/20	4,04	6,14
26/08/20	4,05	6,17
27/08/20	3,98	6,20
28/08/20	3,93	6,23

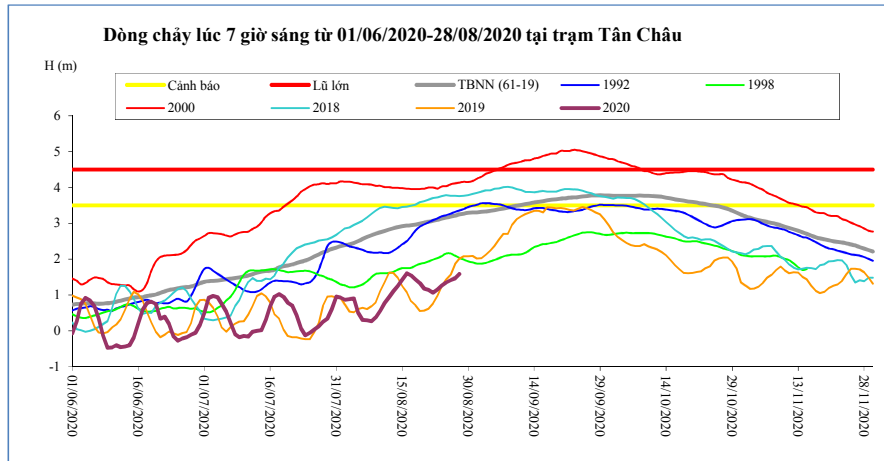
Prek Kdam

Sông Mê Công chảy vào Biển Hồ.



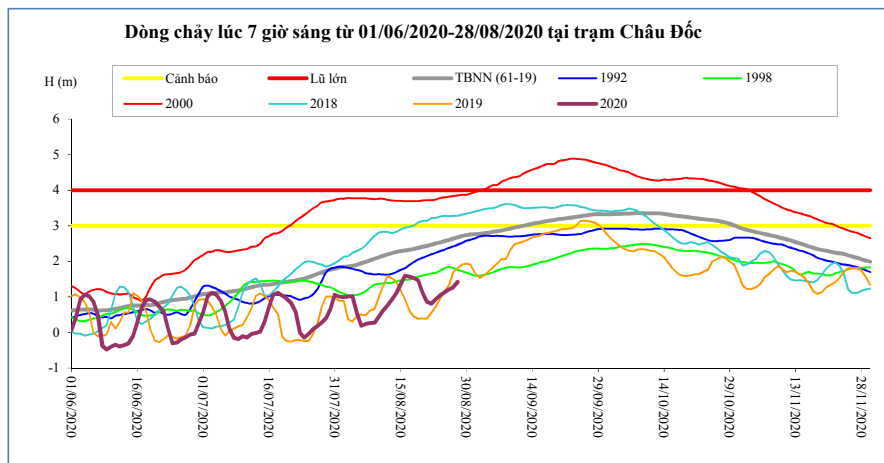
T. gian	H(m)	Biển Hồ W (tỷ m ³)
14/08/20	3,97	2,45
15/08/20	3,91	2,80
16/08/20	3,85	3,42
17/08/20	3,79	3,50
18/08/20	3,73	3,62
19/08/20	3,62	3,79
20/08/20	3,66	4,20
21/08/20	3,83	4,25
22/08/20	4,06	4,66
23/08/20	4,28	5,07
24/08/20	4,42	5,53
25/08/20	4,47	5,86
26/08/20	4,49	6,23
27/08/20	4,46	6,69
28/08/20	4,45	6,98

Tân Châu



T. gian	H(m)	Hbq(m)
14/08/20	1,25	2,90
15/08/20	1,43	2,92
16/08/20	1,61	2,94
17/08/20	1,55	2,95
18/08/20	1,43	2,97
19/08/20	1,33	2,99
20/08/20	1,18	3,02
21/08/20	1,15	3,05
22/08/20	1,07	3,07
23/08/20	1,16	3,10
24/08/20	1,26	3,14
25/08/20	1,35	3,16
26/08/20	1,41	3,19
27/08/20	1,47	3,22
28/08/20	1,59	3,25

Châu Đốc



T. gian	H(m)	Hbq(m)
14/08/20	1,11	2,27
15/08/20	1,35	2,29
16/08/20	1,60	2,31
17/08/20	1,57	2,33
18/08/20	1,53	2,35
19/08/20	1,46	2,38
20/08/20	1,13	2,41
21/08/20	0,87	2,44
22/08/20	0,81	2,47
23/08/20	0,94	2,50
24/08/20	1,05	2,53
25/08/20	1,13	2,57
26/08/20	1,21	2,60
27/08/20	1,27	2,64
28/08/20	1,42	2,68

Ghi chú:

-: Không có số liệu

H(m): Mức nước lúc 7 giờ sáng lấy theo số liệu thực đo của MRC. W (tỷ m3): Ước tính của Viện Quy hoạch Thủy lợi Miền Nam.
 W là tổng lượng nước kể từ ngày 1 tháng 6. Riêng Biển Hồ là dung tích hiện tại. Hbq (m): Mức nước trung bình nhiều năm.

BẢN ĐỒ VỊ TRÍ CÁC TRẠM DỌC DÒNG CHÍNH MÊ CÔNG

