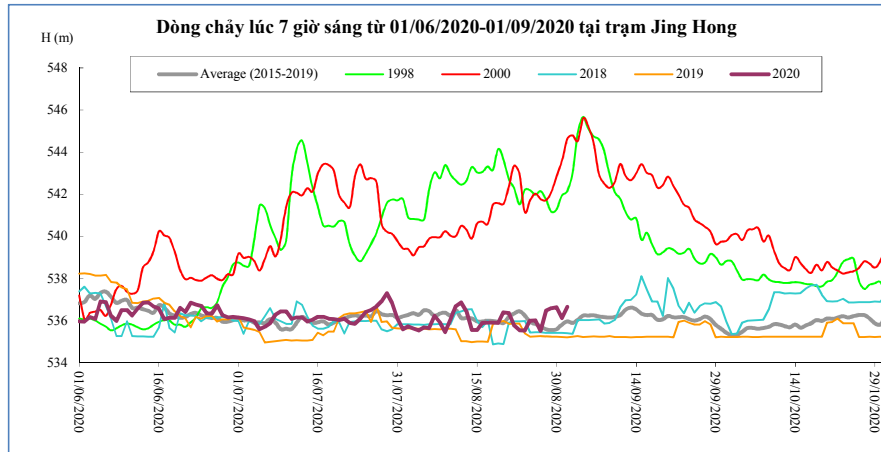


DIỄN BIẾN DÒNG CHẢY TẠI CÁC TRẠM TRÊN DÒNG CHÍNH SÔNG MÊ CÔNG
Dòng chảy lúc 7 giờ sáng từ 01/06/2020-01/09/2020

Jing Hong

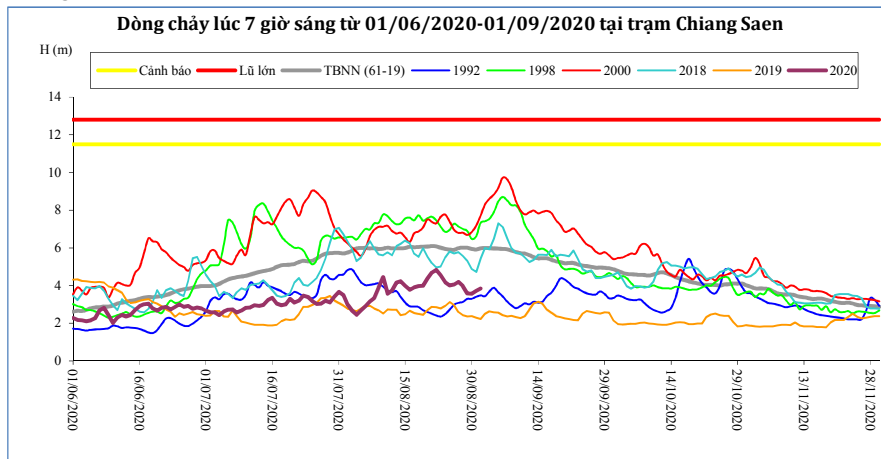
Hôm nay

01/09/20



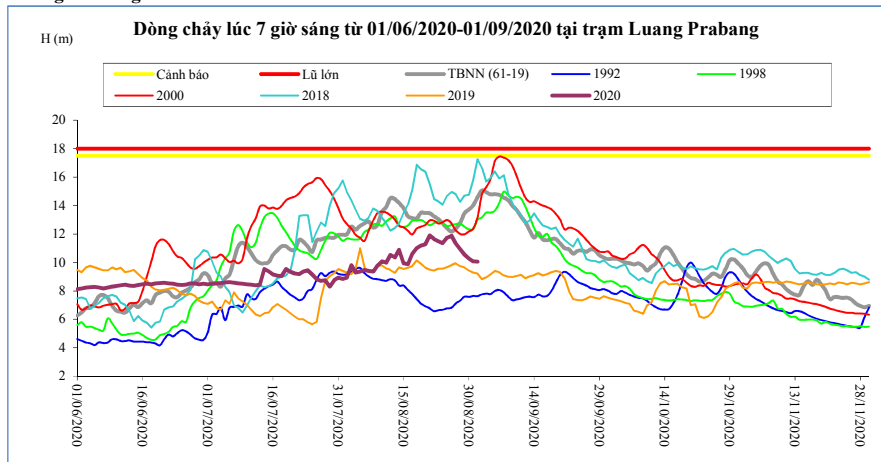
T. gian	H(m)	W(tỷ m ³)
18/08/20	535,92	7,78
19/08/20	535,90	7,87
20/08/20	536,40	7,97
21/08/20	536,37	8,08
22/08/20	535,76	8,15
23/08/20	535,55	8,22
24/08/20	535,54	8,29
25/08/20	536,00	8,38
26/08/20	536,02	8,46
27/08/20	535,52	8,53
28/08/20	536,47	8,64
29/08/20	536,59	8,76
30/08/20	536,64	8,88
31/08/20	536,13	8,97
01/09/20	536,66	9,09

Chiang Saen



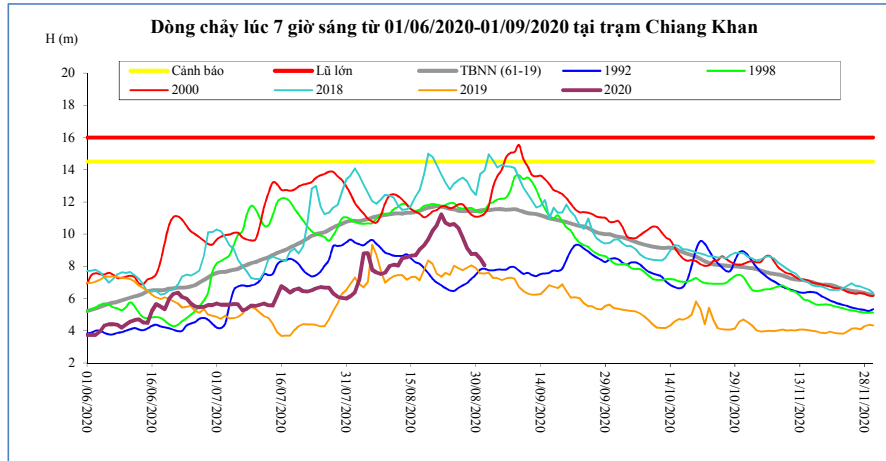
T. gian	H(m)	W(tỷ m ³)
18/08/20	3,98	12,49
19/08/20	3,99	12,73
20/08/20	4,38	13,02
21/08/20	4,69	13,34
22/08/20	4,83	13,67
23/08/20	4,55	13,97
24/08/20	4,17	14,23
25/08/20	4,00	14,48
26/08/20	4,06	14,73
27/08/20	4,20	15,00
28/08/20	3,98	15,24
29/08/20	3,59	15,45
30/08/20	3,57	15,65
31/08/20	3,72	15,87
01/09/20	3,83	16,10

Luang Prabang



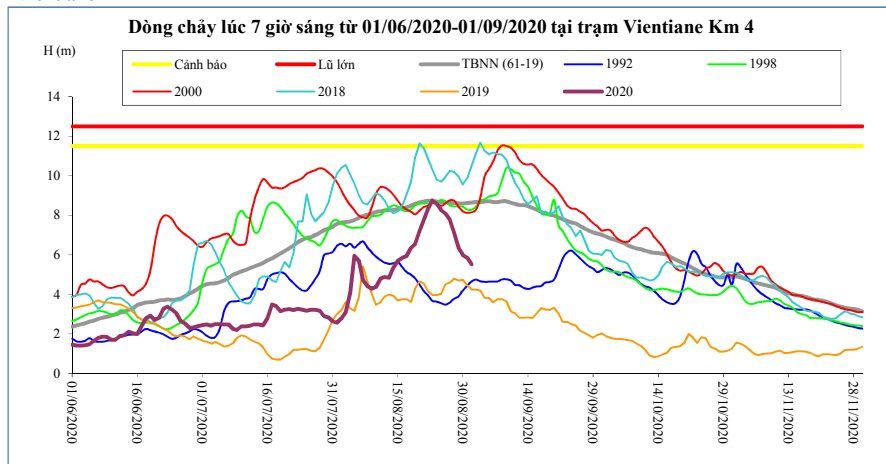
T. gian	H(m)	W(tỷ m ³)
18/08/20	11,00	36,71
19/08/20	11,18	37,42
20/08/20	11,28	38,13
21/08/20	11,90	38,93
22/08/20	11,65	39,69
23/08/20	11,50	40,43
24/08/20	11,36	41,16
25/08/20	11,74	41,93
26/08/20	11,87	42,72
27/08/20	11,35	43,45
28/08/20	10,94	44,12
29/08/20	10,56	44,76
30/08/20	10,28	45,36
31/08/20	10,09	45,94
01/09/20	10,05	46,52

Chiang Khan Vị trí sau hồ Xayabury



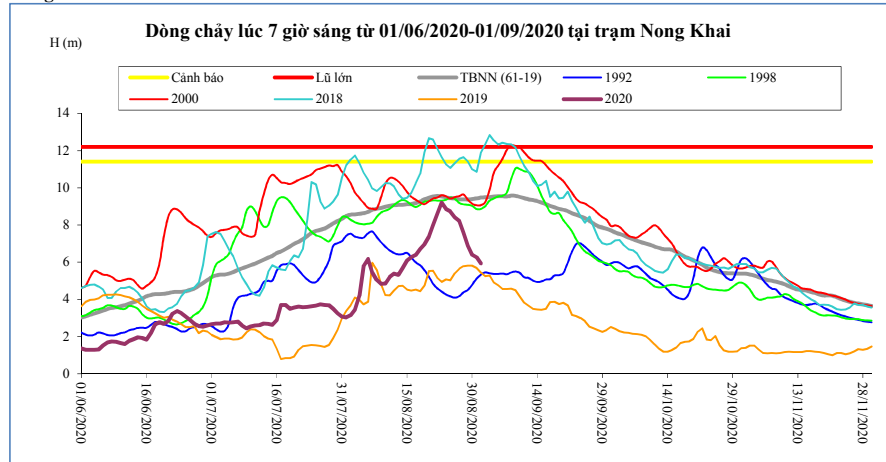
T. gian	H(m)	W(tỷ m ³)
18/08/20	9,32	20,72
19/08/20	9,70	21,33
20/08/20	10,20	22,00
21/08/20	10,56	22,73
22/08/20	11,23	23,56
23/08/20	10,70	24,31
24/08/20	10,56	25,04
25/08/20	10,62	25,78
26/08/20	10,36	26,48
27/08/20	9,78	27,10
28/08/20	9,12	27,63
29/08/20	8,76	28,12
30/08/20	8,78	28,62
31/08/20	8,50	29,08
01/09/20	8,06	29,50

Vientiane Km 4



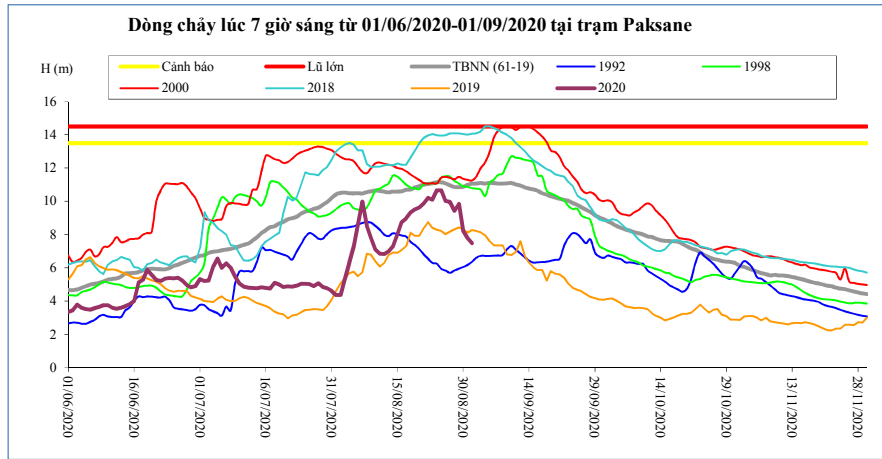
T. gian	H(m)	W(tỷ m ³)
18/08/20	6,35	22,89
19/08/20	6,54	23,59
20/08/20	7,20	24,36
21/08/20	7,74	25,17
22/08/20	8,34	26,08
23/08/20	8,75	26,91
24/08/20	8,57	27,74
25/08/20	8,25	28,57
26/08/20	8,08	29,38
27/08/20	7,75	30,10
28/08/20	7,13	30,74
29/08/20	6,33	31,33
30/08/20	6,00	31,91
31/08/20	5,85	32,45
01/09/20	5,52	32,94

Nong Khai



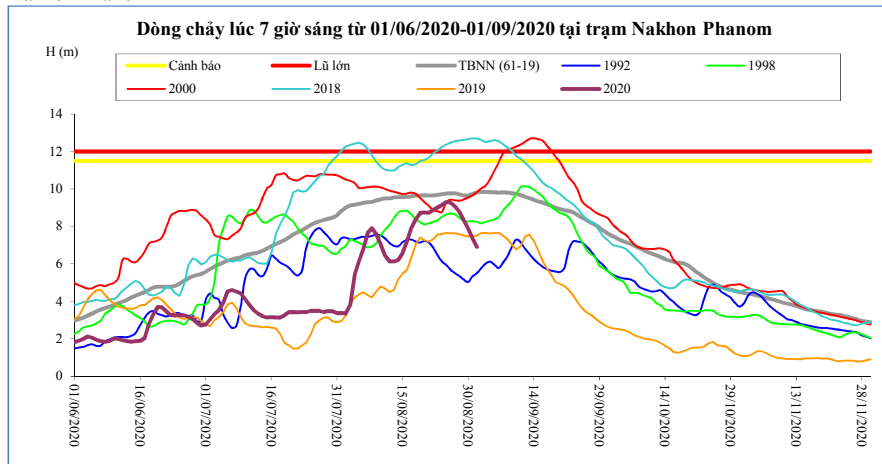
T. gian	H(m)	W(tỷ m ³)
18/08/20	6,72	23,83
19/08/20	6,96	24,58
20/08/20	7,37	25,38
21/08/20	7,99	26,23
22/08/20	8,62	27,17
23/08/20	9,20	28,05
24/08/20	8,84	28,91
25/08/20	8,73	29,79
26/08/20	8,42	30,64
27/08/20	8,22	31,41
28/08/20	7,60	32,09
29/08/20	6,88	32,73
30/08/20	6,40	33,34
31/08/20	6,27	33,92
01/09/20	5,93	34,43

Paksane



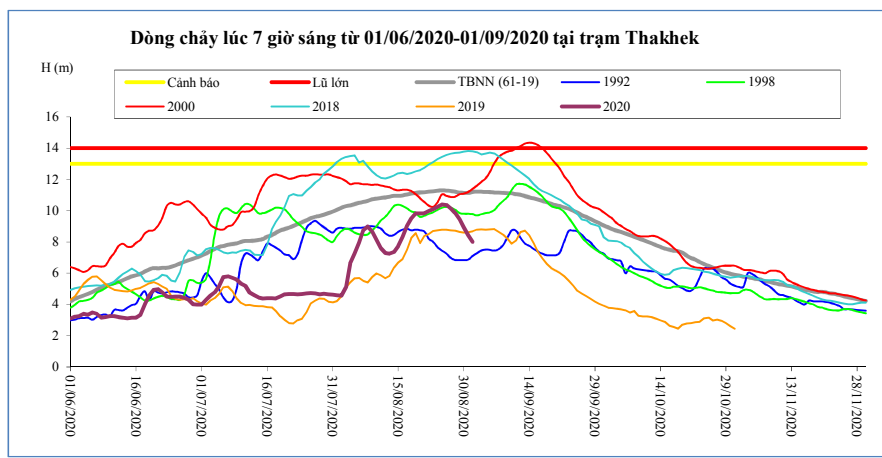
T. gian	H(m)	W(tỷ m ³)
18/08/20	9,33	31,93
19/08/20	9,52	33,03
20/08/20	9,65	34,17
21/08/20	9,90	35,33
22/08/20	10,22	36,56
23/08/20	10,11	37,77
24/08/20	10,66	38,99
25/08/20	10,67	40,24
26/08/20	10,03	41,46
27/08/20	9,96	42,62
28/08/20	9,43	43,70
29/08/20	9,86	44,70
30/08/20	8,24	45,63
31/08/20	7,80	46,49
01/09/20	7,48	47,26

Nakhon Phanom



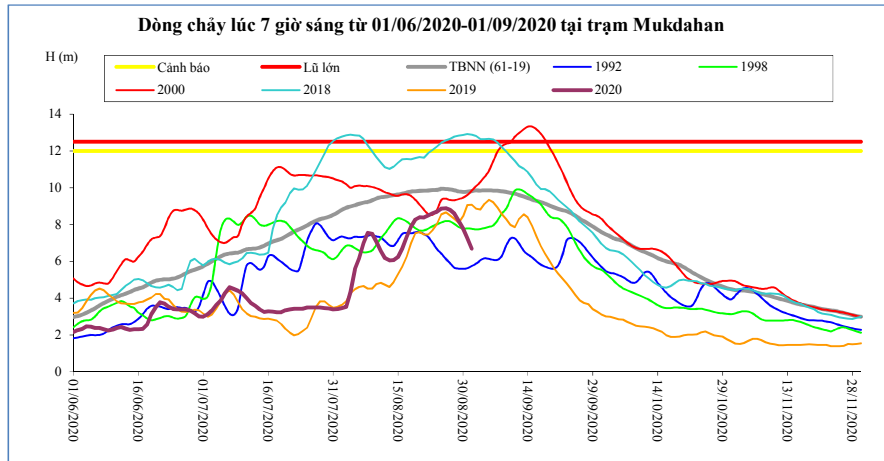
T. gian	H(m)	W(tỷ m ³)
18/08/20	8,38	41,52
19/08/20	8,72	43,05
20/08/20	8,74	44,59
21/08/20	8,72	46,11
22/08/20	8,88	47,68
23/08/20	9,01	49,29
24/08/20	9,14	50,93
25/08/20	9,30	52,62
26/08/20	9,27	54,30
27/08/20	9,07	55,92
28/08/20	8,77	57,46
29/08/20	8,35	58,90
30/08/20	7,88	60,21
31/08/20	7,36	61,39
01/09/20	6,91	62,48

Thakhek



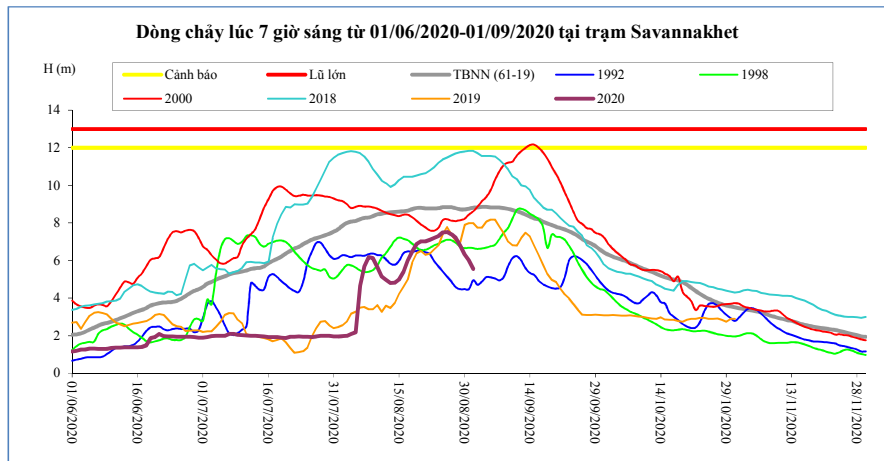
T. gian	H(m)	W(tỷ m ³)
18/08/20	9,50	40,20
19/08/20	9,83	41,66
20/08/20	9,84	43,13
21/08/20	9,83	44,59
22/08/20	9,97	46,09
23/08/20	10,11	47,63
24/08/20	10,25	49,21
25/08/20	10,40	50,83
26/08/20	10,37	52,44
27/08/20	10,14	53,98
28/08/20	9,86	55,45
29/08/20	9,45	56,82
30/08/20	8,95	58,06
31/08/20	8,44	59,18
01/09/20	8,02	60,21

Mukdahan



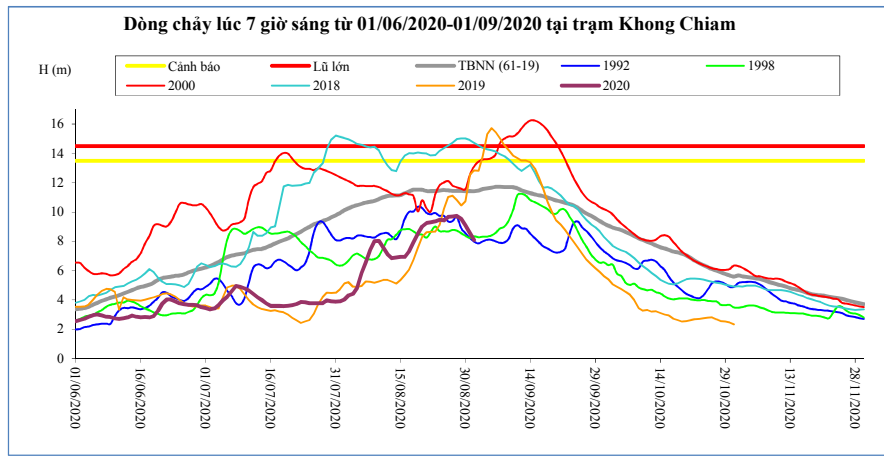
T. gian	H(m)	W(tỷ m ³)
18/08/20	7,88	40,52
19/08/20	8,28	41,98
20/08/20	8,40	43,46
21/08/20	8,38	44,94
22/08/20	8,48	46,45
23/08/20	8,61	48,01
24/08/20	8,70	49,60
25/08/20	8,86	51,22
26/08/20	8,89	52,85
27/08/20	8,79	54,41
28/08/20	8,58	55,92
29/08/20	8,20	57,33
30/08/20	7,79	58,61
31/08/20	7,26	59,77
01/09/20	6,70	60,83

Savannakhet



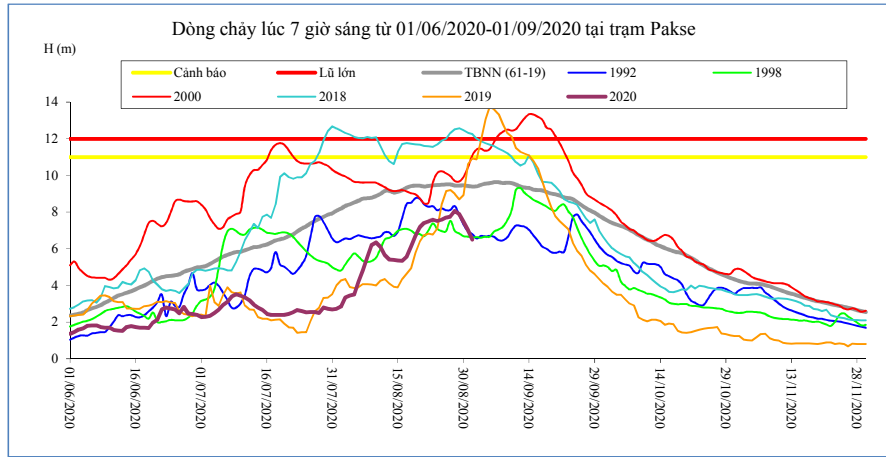
T. gian	H(m)	W(tỷ m ³)
18/08/20	6,48	40,53
19/08/20	6,89	42,00
20/08/20	7,02	43,47
21/08/20	7,02	44,96
22/08/20	7,10	46,47
23/08/20	7,20	48,03
24/08/20	7,31	49,62
25/08/20	7,49	51,25
26/08/20	7,52	52,87
27/08/20	7,40	54,44
28/08/20	7,20	55,95
29/08/20	6,80	57,36
30/08/20	6,32	58,64
31/08/20	6,01	59,80
01/09/20	5,55	60,87

Khong Chiam



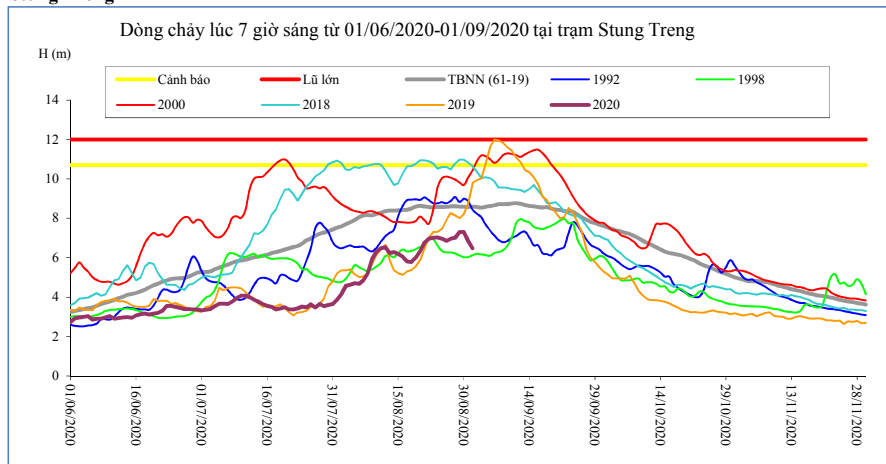
T. gian	H(m)	W(tỷ m ³)
18/08/20	7,93	43,45
19/08/20	8,53	44,90
20/08/20	9,00	46,45
21/08/20	9,25	48,08
22/08/20	9,29	49,71
23/08/20	9,35	51,36
24/08/20	9,47	53,04
25/08/20	9,43	54,71
26/08/20	9,67	56,44
27/08/20	9,68	58,18
28/08/20	9,73	59,93
29/08/20	9,53	61,62
30/08/20	9,10	63,21
31/08/20	8,57	64,66
01/09/20	8,09	65,99

Pakse



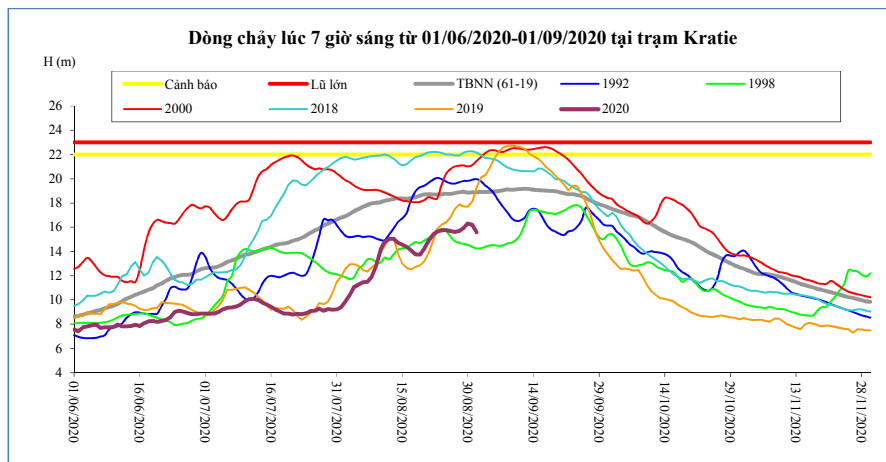
T. gian	H(m)	W(tỷ m ³)
18/08/20	6,10	43,69
19/08/20	6,70	45,14
20/08/20	7,18	46,74
21/08/20	7,40	48,40
22/08/20	7,49	50,09
23/08/20	7,58	51,81
24/08/20	7,52	53,51
25/08/20	7,59	55,23
26/08/20	7,70	56,99
27/08/20	7,75	58,76
28/08/20	8,06	60,63
29/08/20	7,90	62,45
30/08/20	7,50	64,15
31/08/20	7,04	65,70
01/09/20	6,50	67,10

Stung Treng



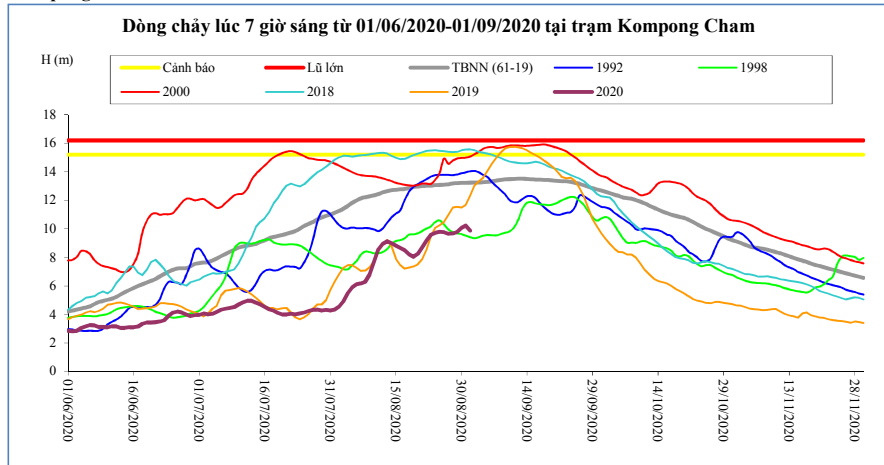
T. gian	H(m)	W(tỷ m ³)
18/08/20	5,78	50,55
19/08/20	6,00	51,99
20/08/20	6,35	53,57
21/08/20	6,76	55,28
22/08/20	6,97	57,12
23/08/20	7,01	59,03
24/08/20	7,03	60,95
25/08/20	6,96	62,88
26/08/20	6,86	64,80
27/08/20	6,97	66,70
28/08/20	7,01	68,63
29/08/20	7,31	70,62
30/08/20	7,31	72,69
31/08/20	6,85	74,71
01/09/20	6,48	76,56

Kratie



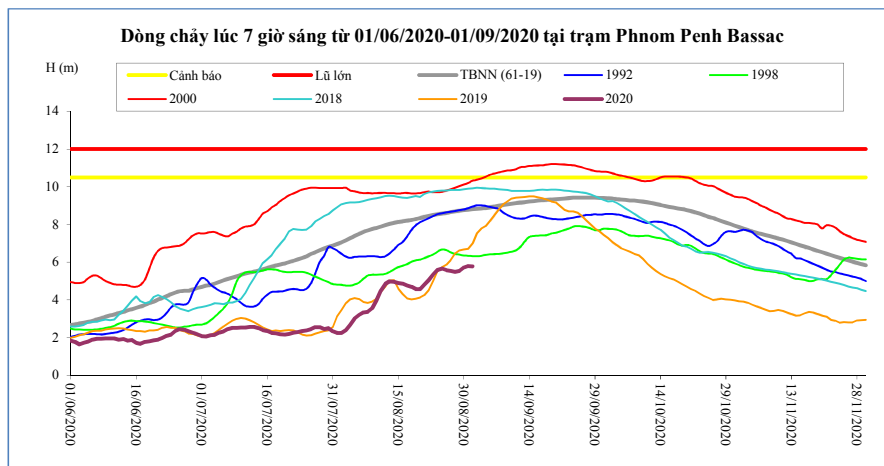
T. gian	H(m)	W(tỷ m ³)
18/08/20	13,75	51,45
19/08/20	13,74	52,90
20/08/20	14,25	54,46
21/08/20	14,88	56,19
22/08/20	15,39	58,05
23/08/20	15,64	59,97
24/08/20	15,74	61,93
25/08/20	15,77	63,89
26/08/20	15,70	65,83
27/08/20	15,60	67,75
28/08/20	15,69	69,69
29/08/20	15,94	71,69
30/08/20	16,32	73,81
31/08/20	16,20	75,89
01/09/20	15,59	77,80

Kompong Cham



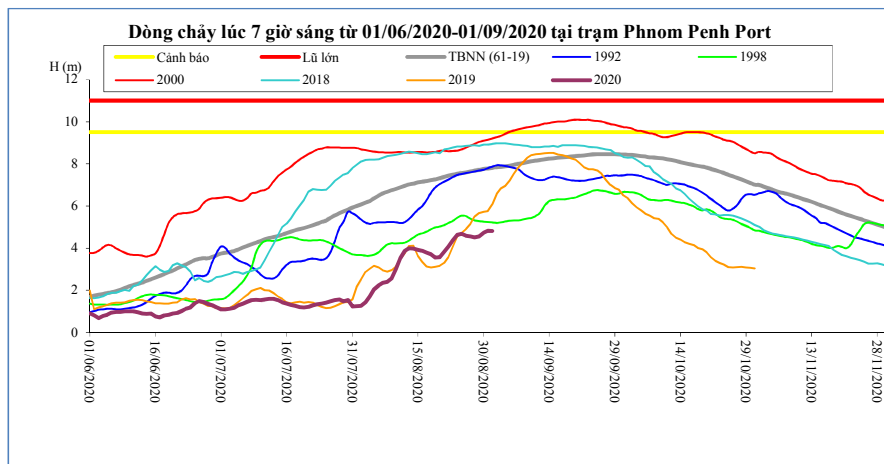
T. gian	H(m)	Hbq(m)
18/08/20	8,22	12,85
19/08/20	8,04	12,93
20/08/20	8,23	12,97
21/08/20	8,70	13,00
22/08/20	9,20	13,02
23/08/20	9,58	13,03
24/08/20	9,71	13,06
25/08/20	9,78	13,08
26/08/20	9,76	13,10
27/08/20	9,66	13,12
28/08/20	9,68	13,19
29/08/20	9,79	13,21
30/08/20	10,08	13,23
31/08/20	10,23	13,23
01/09/20	9,88	13,24

Phnom Penh Bassac



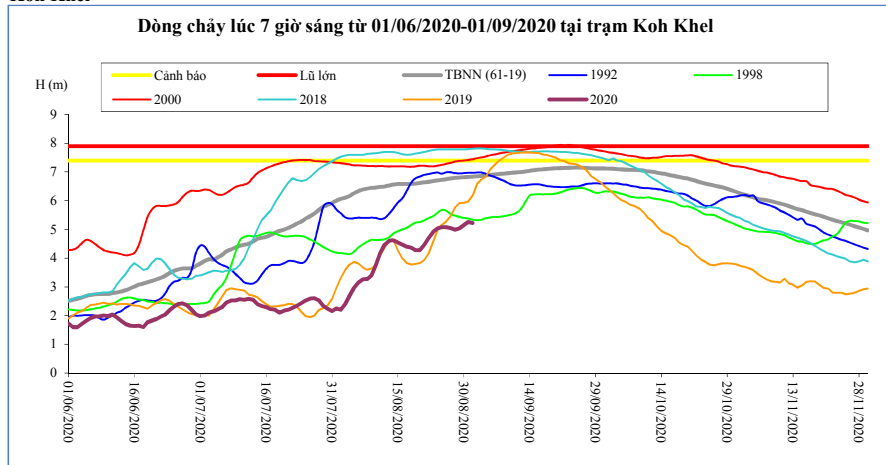
T. gian	H(m)	Hbq(m)
18/08/20	4,69	8,24
19/08/20	4,57	8,29
20/08/20	4,57	8,34
21/08/20	4,81	8,40
22/08/20	5,05	8,45
23/08/20	5,35	8,50
24/08/20	5,60	8,55
25/08/20	5,66	8,58
26/08/20	5,57	8,61
27/08/20	5,54	8,65
28/08/20	5,50	8,70
29/08/20	5,54	8,73
30/08/20	5,71	8,76
31/08/20	5,80	8,78
01/09/20	5,79	8,81

Phnom Penh Port



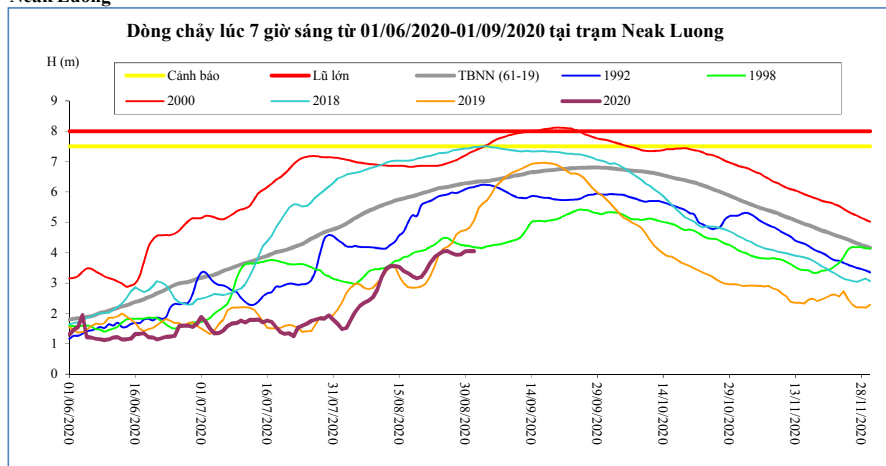
T. gian	H(m)	Hbq(m)
18/08/20	3,71	7,23
19/08/20	3,56	7,26
20/08/20	3,57	7,32
21/08/20	3,83	7,38
22/08/20	4,07	7,44
23/08/20	4,37	7,48
24/08/20	4,63	7,53
25/08/20	4,68	7,56
26/08/20	4,59	7,59
27/08/20	4,56	7,64
28/08/20	4,51	7,69
29/08/20	4,56	7,72
30/08/20	4,73	7,76
31/08/20	4,82	7,78
01/09/20	4,81	7,81

Koh Khel



T. gian	H(m)	Hbq(m)
18/08/20	4,36	6,58
19/08/20	4,28	6,60
20/08/20	4,28	6,62
21/08/20	4,47	6,64
22/08/20	4,70	6,66
23/08/20	4,91	6,68
24/08/20	5,03	6,71
25/08/20	5,08	6,73
26/08/20	5,08	6,75
27/08/20	5,04	6,77
28/08/20	4,99	6,79
29/08/20	5,03	6,81
30/08/20	5,14	6,82
31/08/20	5,26	6,83
01/09/20	5,22	6,84

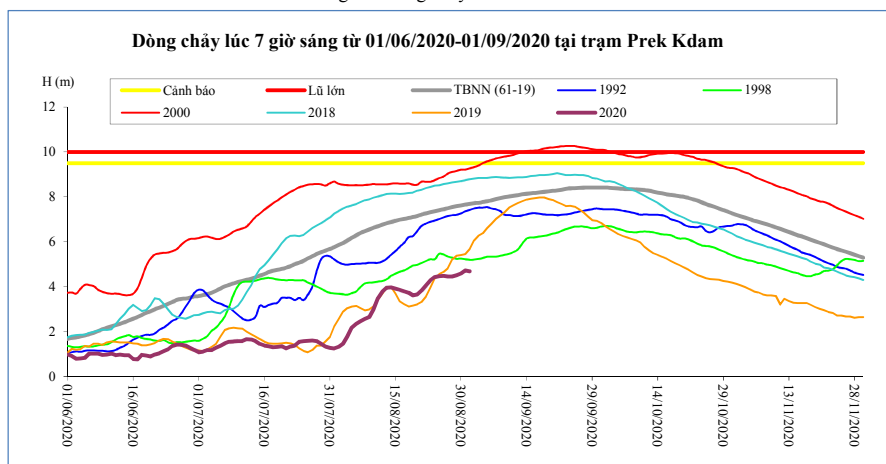
Neak Luong



T. gian	H(m)	Hbq(m)
18/08/20	3,22	5,86
19/08/20	3,16	5,90
20/08/20	3,20	5,95
21/08/20	3,40	5,99
22/08/20	3,65	6,03
23/08/20	3,85	6,08
24/08/20	3,95	6,13
25/08/20	4,04	6,14
26/08/20	4,05	6,17
27/08/20	3,98	6,20
28/08/20	3,93	6,23
29/08/20	3,94	6,26
30/08/20	4,04	6,29
31/08/20	4,05	6,30
01/09/20	4,05	6,33

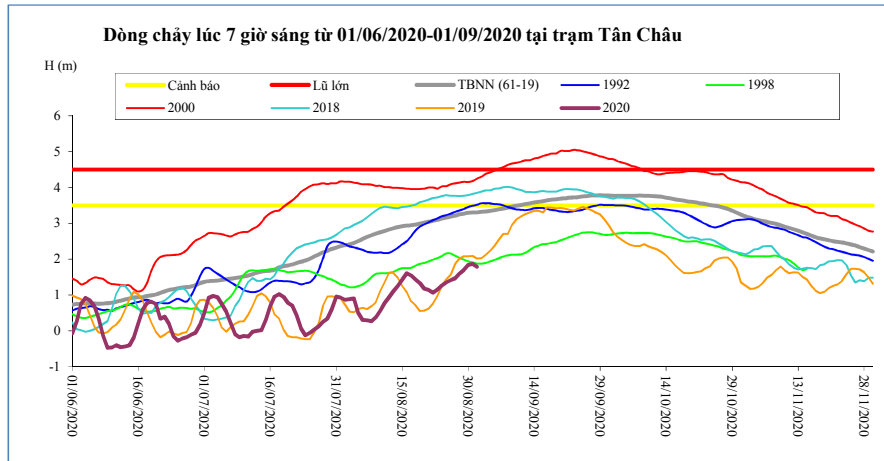
Prek Kdam

Sông Mê Công chảy vào Biển Hồ.



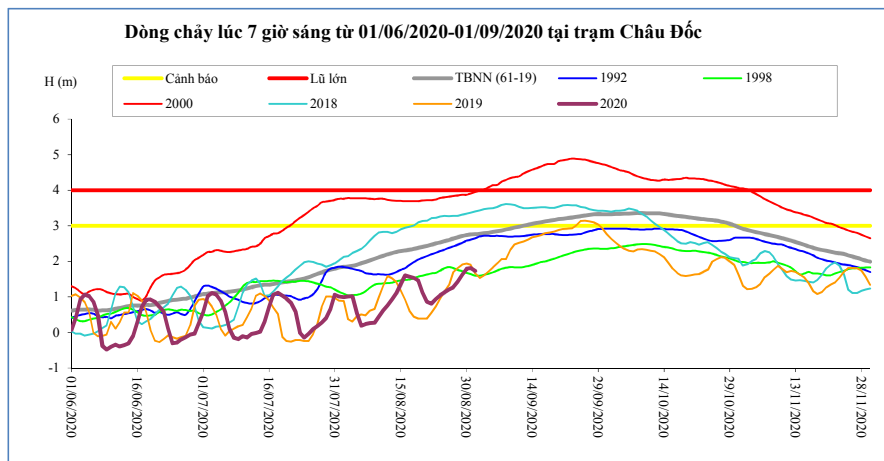
T. gian	H(m)	W (tỷ m ³)	Biển Hồ
18/08/20	3,73	3,62	
19/08/20	3,62	3,79	
20/08/20	3,66	4,20	
21/08/20	3,83	4,25	
22/08/20	4,06	4,66	
23/08/20	4,28	5,07	
24/08/20	4,42	5,53	
25/08/20	4,47	5,86	
26/08/20	4,49	6,23	
27/08/20	4,46	6,69	
28/08/20	4,45	6,98	
29/08/20	4,51	7,30	
30/08/20	4,59	7,77	
31/08/20	4,72	8,19	
01/09/20	4,69	8,56	

Tân Châu



T. gian	H(m)	Hbq(m)
18/08/20	1,43	2,97
19/08/20	1,33	2,99
20/08/20	1,18	3,02
21/08/20	1,15	3,05
22/08/20	1,07	3,07
23/08/20	1,16	3,10
24/08/20	1,26	3,14
25/08/20	1,35	3,16
26/08/20	1,41	3,19
27/08/20	1,47	3,22
28/08/20	1,59	3,25
29/08/20	1,70	3,27
30/08/20	1,84	3,30
31/08/20	1,87	3,31
01/09/20	1,79	3,31

Châu Đốc



T. gian	H(m)	Hbq(m)
18/08/20	1,53	2,35
19/08/20	1,46	2,38
20/08/20	1,13	2,41
21/08/20	0,87	2,44
22/08/20	0,81	2,47
23/08/20	0,94	2,50
24/08/20	1,05	2,53
25/08/20	1,13	2,57
26/08/20	1,21	2,60
27/08/20	1,27	2,64
28/08/20	1,42	2,68
29/08/20	1,62	2,71
30/08/20	1,79	2,74
31/08/20	1,81	2,75
01/09/20	1,73	2,77

Ghi chú:

-: Không có số liệu

H(m): Mức nước lúc 7 giờ sáng lấy theo số liệu thực đo của MRC. W (tỷ m3): Ước tính của Viện Quy hoạch Thủy lợi Miền Nam. W là tổng lượng nước kể từ ngày 1 tháng 6. Riêng Biển Hồ là dung tích hiện tại. Hbq (m): Mức nước trung bình nhiều năm.

BẢN ĐỒ VỊ TRÍ CÁC TRẠM DỌC DÒNG CHÍNH MÊ KÔNG

