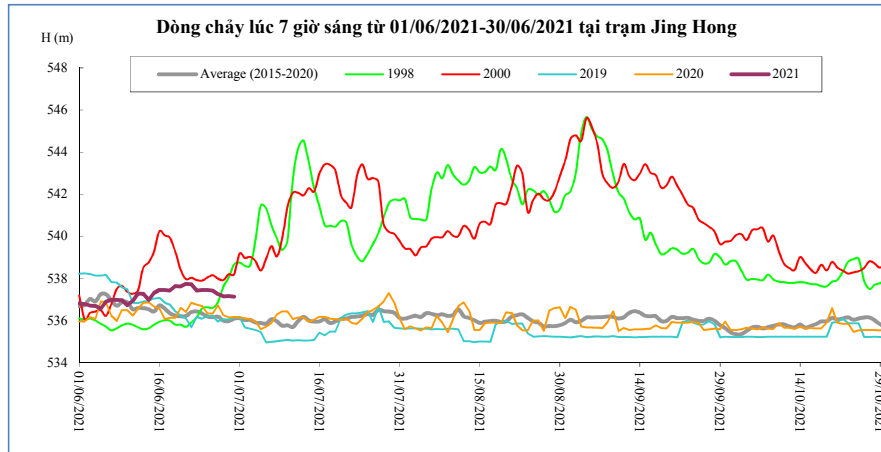


**DIỄN BIẾN DÒNG CHẢY TẠI CÁC TRẠM TRÊN DÒNG CHÍNH SÔNG MÊ CÔNG**  
**Dòng chảy lúc 7 giờ sáng từ 01/06/2021-30/06/2021**

**Jing Hong**

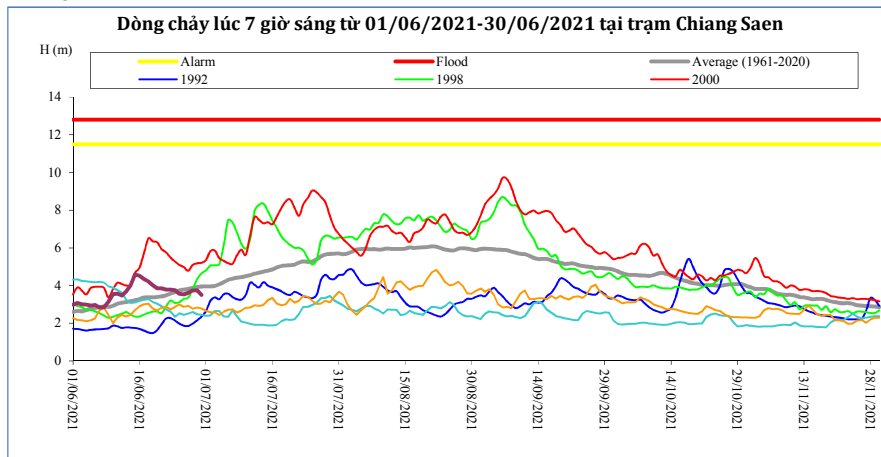
Hôm nay

30/06/21



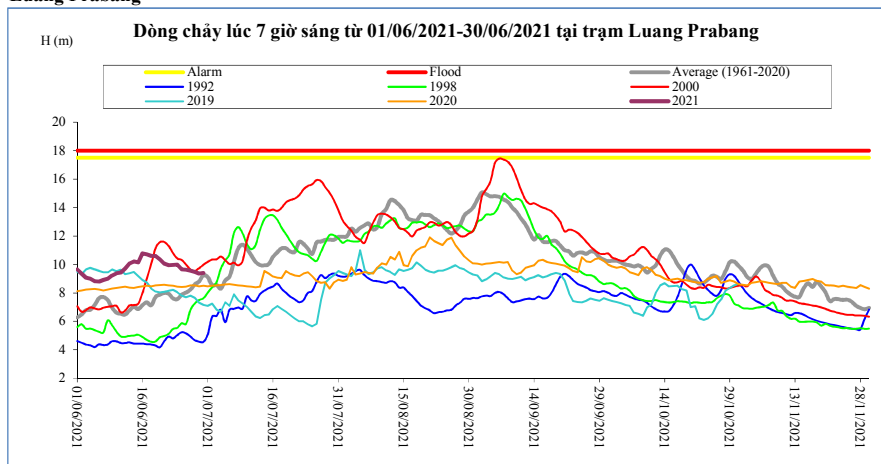
T, gian	H(m)	W(tỷ m <sup>3</sup> )
16/06/21	537,47	2,21
17/06/21	537,46	2,37
18/06/21	537,44	2,54
19/06/21	537,65	2,71
20/06/21	537,63	2,89
21/06/21	537,75	3,07
22/06/21	537,73	3,25
23/06/21	537,44	3,41
24/06/21	537,46	3,58
25/06/21	537,46	3,74
26/06/21	537,44	3,91
27/06/21	537,27	4,06
28/06/21	537,16	4,21
29/06/21	537,18	4,36
30/06/21	537,15	4,51

**Chiang Saen**



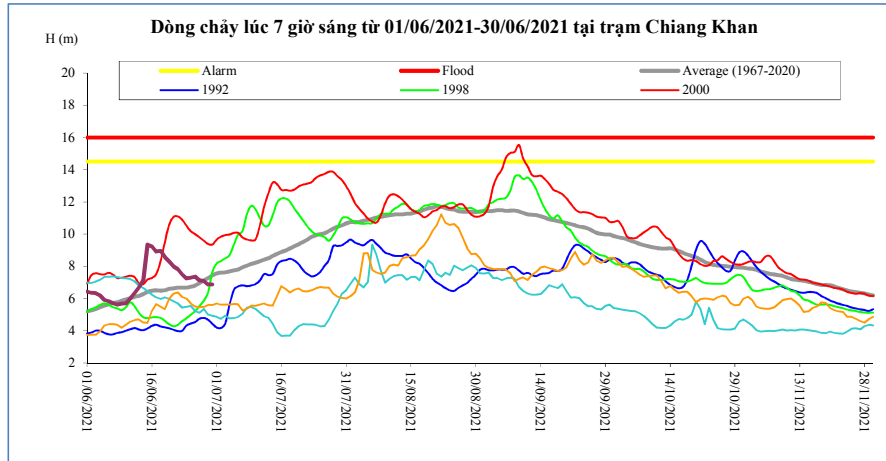
T, gian	H(m)	W(tỷ m <sup>3</sup> )
16/06/21	4,52	3,07
17/06/21	4,35	3,35
18/06/21	4,21	3,62
19/06/21	4,02	3,86
20/06/21	3,85	4,09
21/06/21	3,85	4,32
22/06/21	3,79	4,55
23/06/21	3,79	4,77
24/06/21	3,76	5,00
25/06/21	3,57	5,20
26/06/21	3,53	5,40
27/06/21	3,61	5,61
28/06/21	3,74	5,83
29/06/21	3,75	6,05
30/06/21	3,49	6,25

**Luang Prabang**



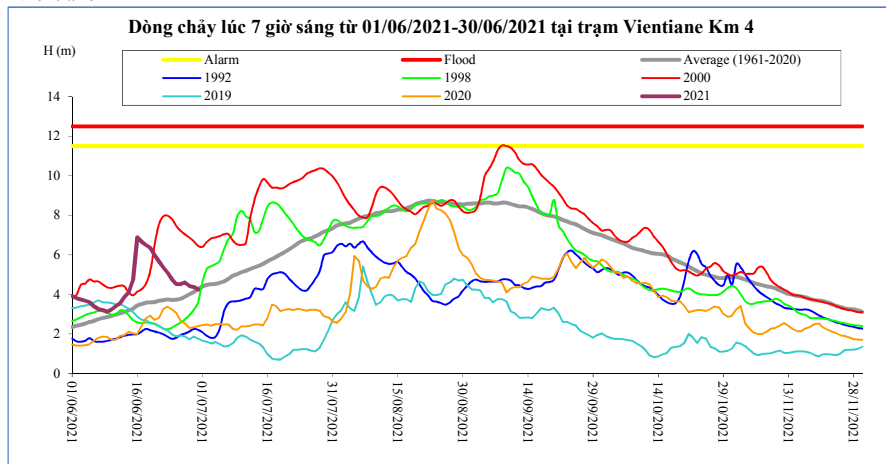
T, gian	H(m)	W(tỷ m <sup>3</sup> )
16/06/21	10,78	8,30
17/06/21	10,70	8,95
18/06/21	10,60	9,59
19/06/21	10,59	10,22
20/06/21	10,34	10,83
21/06/21	10,06	11,41
22/06/21	9,94	11,98
23/06/21	9,96	12,54
24/06/21	9,98	13,11
25/06/21	9,66	13,65
26/06/21	9,64	14,18
27/06/21	9,56	14,71
28/06/21	9,48	15,23
29/06/21	9,36	15,73
30/06/21	9,40	16,24

**Chiang Khan** Vị trí sau hồ Xayabury



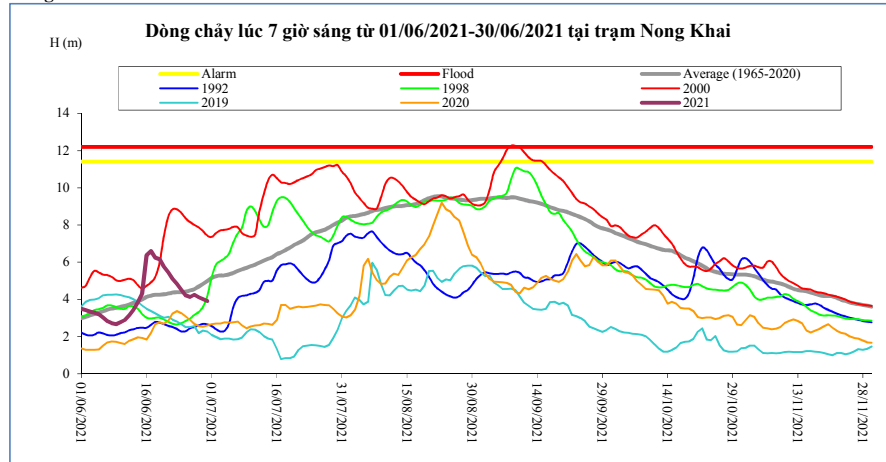
T, gian	H(m)	W(tỷ m <sup>3</sup> )
16/06/21	9,23	4,67
17/06/21	8,91	5,18
18/06/21	8,95	5,70
19/06/21	8,57	6,17
20/06/21	8,30	6,61
21/06/21	8,00	7,02
22/06/21	7,82	7,42
23/06/21	7,50	7,78
24/06/21	7,25	8,12
25/06/21	7,28	8,47
26/06/21	7,37	8,82
27/06/21	7,12	9,15
28/06/21	7,08	9,48
29/06/21	6,86	9,79
<b>30/06/21</b>	<b>6,87</b>	<b>10,10</b>

**Vientiane Km 4**



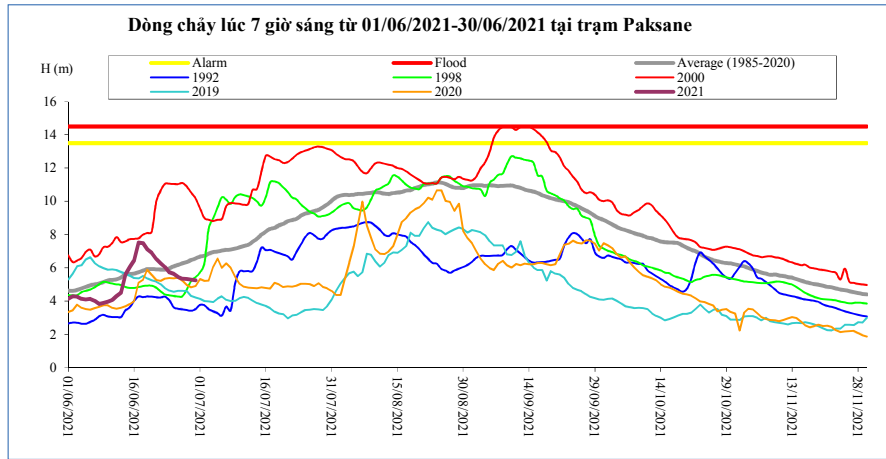
T, gian	H(m)	W(tỷ m <sup>3</sup> )
16/06/21	6,88	4,93
17/06/21	6,66	5,48
18/06/21	6,49	6,04
19/06/21	6,35	6,56
20/06/21	6,00	7,05
21/06/21	5,65	7,50
22/06/21	5,35	7,93
23/06/21	5,08	8,33
24/06/21	4,75	8,70
25/06/21	4,52	9,08
26/06/21	4,52	9,46
27/06/21	4,60	9,82
28/06/21	4,42	10,17
29/06/21	4,38	10,51
<b>30/06/21</b>	<b>4,24</b>	<b>10,85</b>

**Nong Khai**



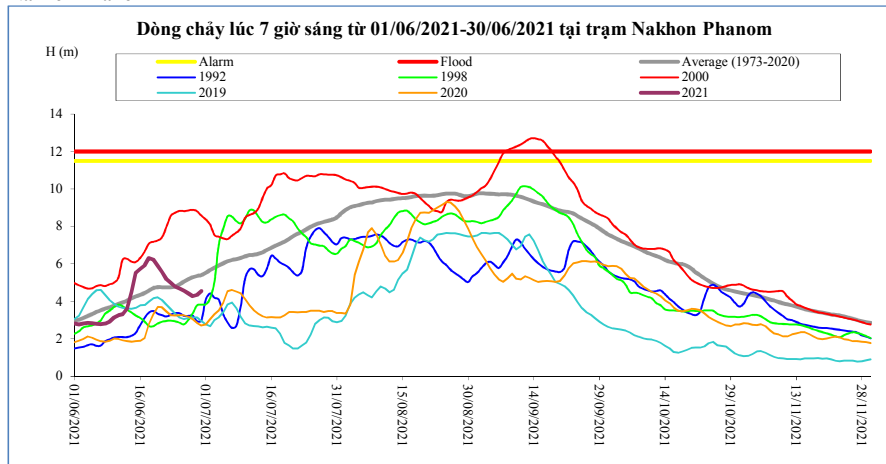
T, gian	H(m)	W(tỷ m <sup>3</sup> )
16/06/21	6,36	5,04
17/06/21	6,60	5,61
18/06/21	6,25	6,19
19/06/21	6,16	6,73
20/06/21	5,77	7,24
21/06/21	5,45	7,71
22/06/21	5,12	8,15
23/06/21	4,83	8,57
24/06/21	4,51	8,96
25/06/21	4,22	9,35
26/06/21	4,14	9,74
27/06/21	4,25	10,11
28/06/21	4,12	10,47
29/06/21	4,02	10,82
<b>30/06/21</b>	<b>3,91</b>	<b>11,18</b>

**Paksane**



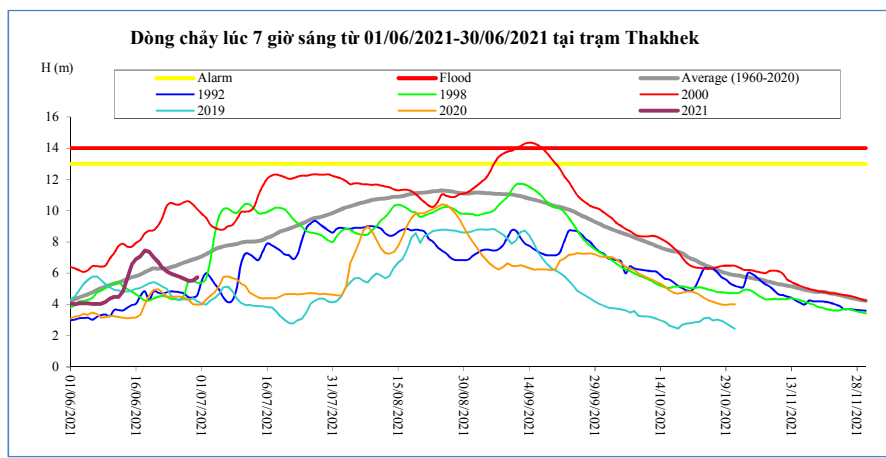
T, gian	H(m)	W(tỷ m <sup>3</sup> )
16/06/21	6,45	6,02
17/06/21	7,52	6,72
18/06/21	7,48	7,47
19/06/21	7,12	8,19
20/06/21	6,92	8,87
21/06/21	6,55	9,49
22/06/21	6,28	10,07
23/06/21	6,06	10,61
24/06/21	5,74	11,12
25/06/21	5,65	11,63
26/06/21	5,47	12,12
27/06/21	5,36	12,60
28/06/21	5,33	13,06
29/06/21	5,29	13,52
<b>30/06/21</b>	<b>5,26</b>	<b>13,99</b>

**Nakhon Phanom**



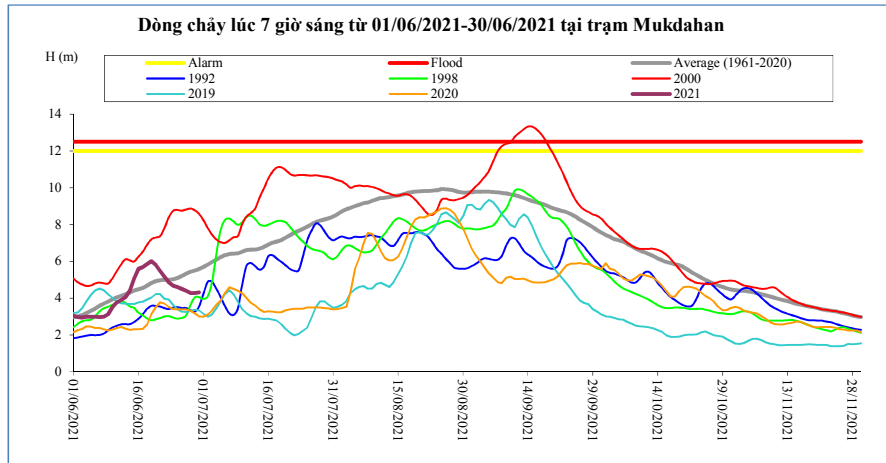
T, gian	H(m)	W(tỷ m <sup>3</sup> )
16/06/21	5,73	7,17
17/06/21	5,91	8,04
18/06/21	6,31	8,99
19/06/21	6,23	9,93
20/06/21	5,89	10,80
21/06/21	5,58	11,60
22/06/21	5,18	12,33
23/06/21	4,98	13,03
24/06/21	4,79	13,69
25/06/21	4,69	14,33
26/06/21	4,57	14,95
27/06/21	4,43	15,55
28/06/21	4,27	16,13
29/06/21	4,34	16,71
<b>30/06/21</b>	<b>4,55</b>	<b>17,33</b>

**Thakhek**



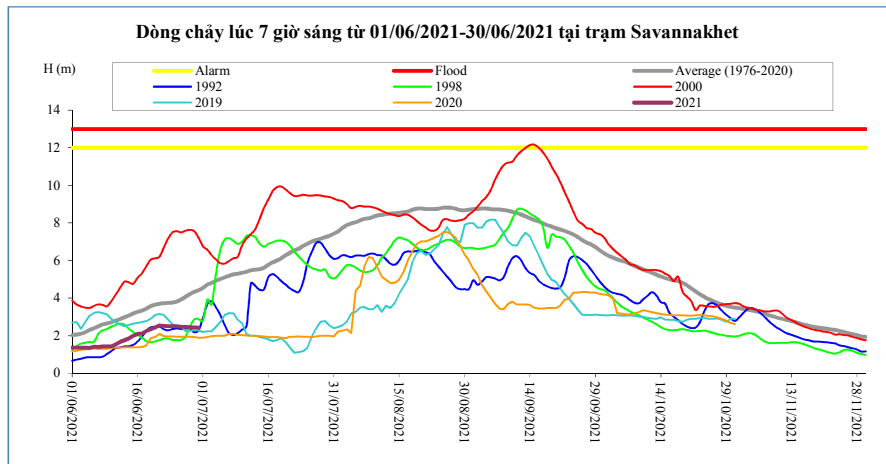
T, gian	H(m)	W(tỷ m <sup>3</sup> )
16/06/21	6,90	6,88
17/06/21	7,10	7,72
18/06/21	7,45	8,63
19/06/21	7,37	9,52
20/06/21	7,04	10,35
21/06/21	6,72	11,12
22/06/21	6,36	11,82
23/06/21	6,11	12,47
24/06/21	5,97	13,11
25/06/21	5,86	13,72
26/06/21	5,76	14,32
27/06/21	5,63	14,89
28/06/21	5,51	15,45
29/06/21	5,54	16,01
<b>30/06/21</b>	<b>5,74</b>	<b>16,61</b>

**Mukdahan**



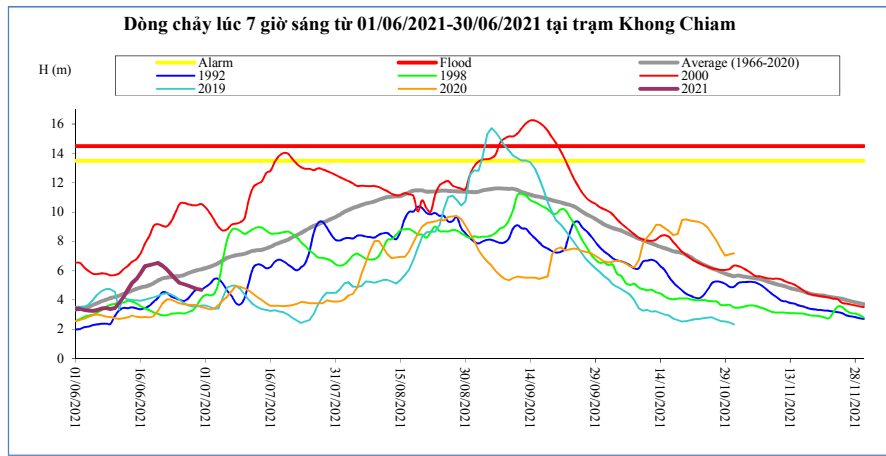
T, gian	H(m)	W(tỷ m <sup>3</sup> )
16/06/21	5,59	7,01
17/06/21	5,68	7,85
18/06/21	5,85	8,77
19/06/21	6,00	9,67
20/06/21	5,79	10,51
21/06/21	5,48	11,29
22/06/21	5,16	12,01
23/06/21	4,86	12,68
24/06/21	4,68	13,33
25/06/21	4,60	13,95
26/06/21	4,50	14,56
27/06/21	4,40	15,14
28/06/21	4,28	15,71
29/06/21	4,28	16,28
<b>30/06/21</b>	<b>4,30</b>	<b>16,88</b>

**Savannakhet**



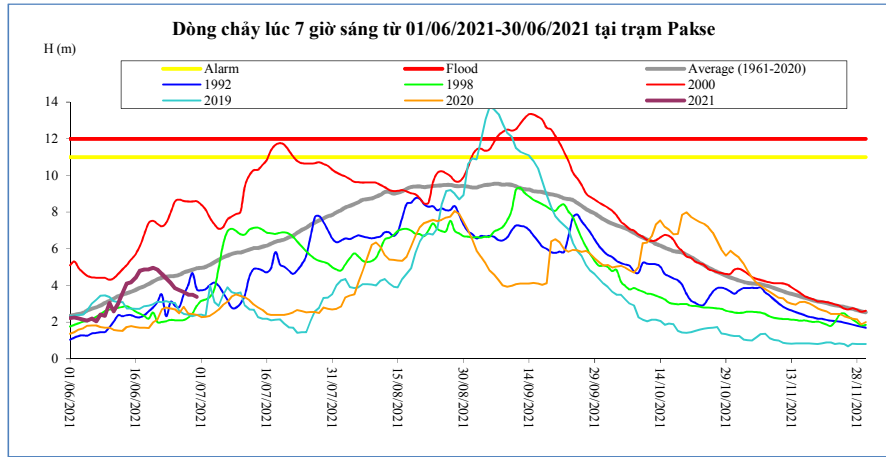
T, gian	H(m)	W(tỷ m <sup>3</sup> )
16/06/21	2,10	7,01
17/06/21	2,11	7,86
18/06/21	2,25	8,77
19/06/21	2,35	9,67
20/06/21	2,44	10,52
21/06/21	2,55	11,30
22/06/21	2,52	12,02
23/06/21	2,50	12,69
24/06/21	2,50	13,34
25/06/21	2,50	13,97
26/06/21	2,48	14,57
27/06/21	2,47	15,16
28/06/21	2,45	15,72
29/06/21	2,44	16,29
<b>30/06/21</b>	<b>2,42</b>	<b>16,89</b>

**Khong Chiam**



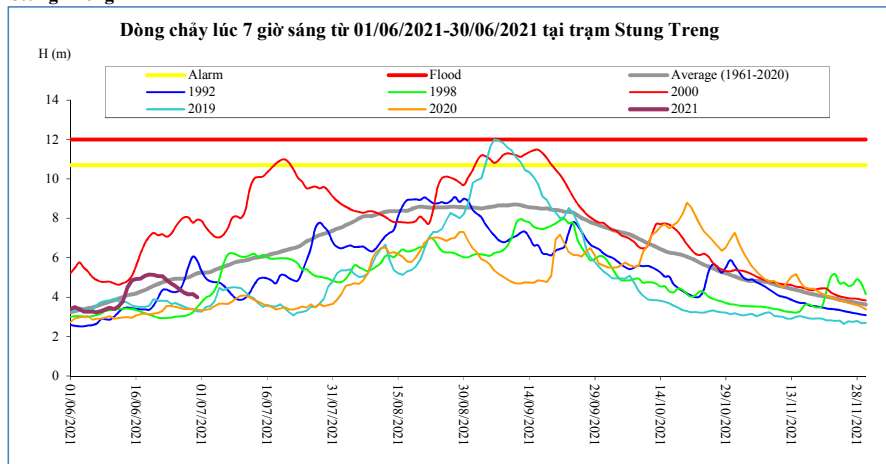
T, gian	H(m)	W(tỷ m <sup>3</sup> )
16/06/21	5,86	7,86
17/06/21	6,30	8,79
18/06/21	6,36	9,74
19/06/21	6,45	10,70
20/06/21	6,52	11,68
21/06/21	6,34	12,62
22/06/21	6,08	13,50
23/06/21	5,78	14,33
24/06/21	5,42	15,08
25/06/21	5,17	15,79
26/06/21	5,08	16,48
27/06/21	4,97	17,15
28/06/21	4,86	17,80
29/06/21	4,76	18,43
<b>30/06/21</b>	<b>4,68</b>	<b>19,05</b>

**Pakse**



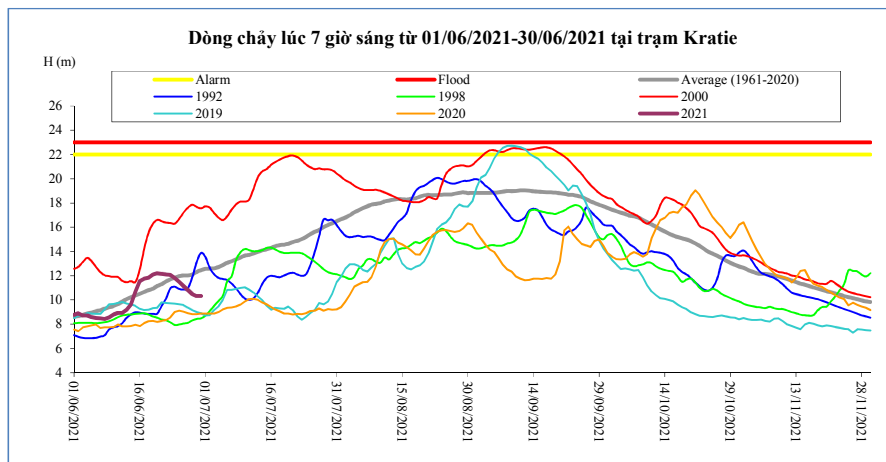
T, gian	H(m)	W(tỷ m <sup>3</sup> )
16/06/21	4,42	8,23
17/06/21	4,80	9,17
18/06/21	4,88	10,13
19/06/21	4,88	11,09
20/06/21	4,96	12,07
21/06/21	4,85	13,03
22/06/21	4,62	13,93
23/06/21	4,38	14,77
24/06/21	4,14	15,56
25/06/21	3,84	16,28
26/06/21	3,74	16,98
27/06/21	3,64	17,65
28/06/21	3,50	18,30
29/06/21	3,49	18,94
<b>30/06/21</b>	<b>3,38</b>	<b>19,56</b>

**Stung Treng**



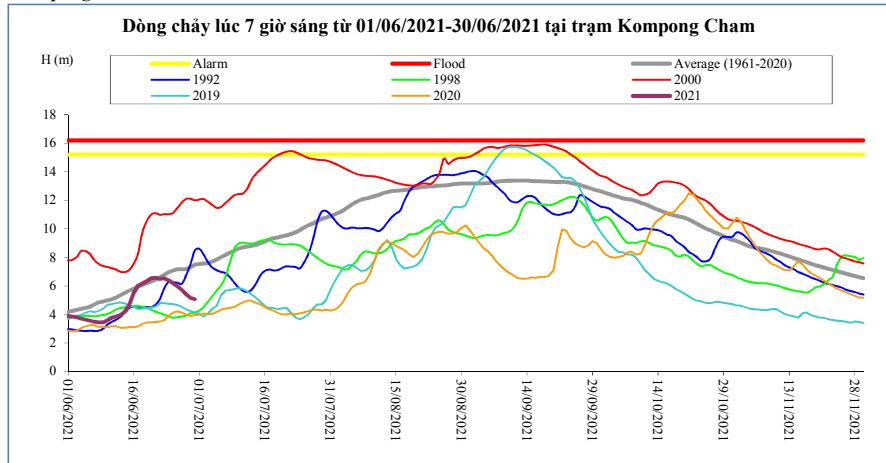
T, gian	H(m)	W(tỷ m <sup>3</sup> )
16/06/21	4,92	8,44
17/06/21	4,94	9,44
18/06/21	5,08	10,45
19/06/21	5,14	11,51
20/06/21	5,13	12,60
21/06/21	5,06	13,67
22/06/21	5,07	14,73
23/06/21	4,86	15,78
24/06/21	4,70	16,77
25/06/21	4,57	17,69
26/06/21	4,39	18,56
27/06/21	4,22	19,37
28/06/21	4,14	20,12
29/06/21	4,15	20,84
<b>30/06/21</b>	<b>4,00</b>	<b>21,56</b>

**Kratie**



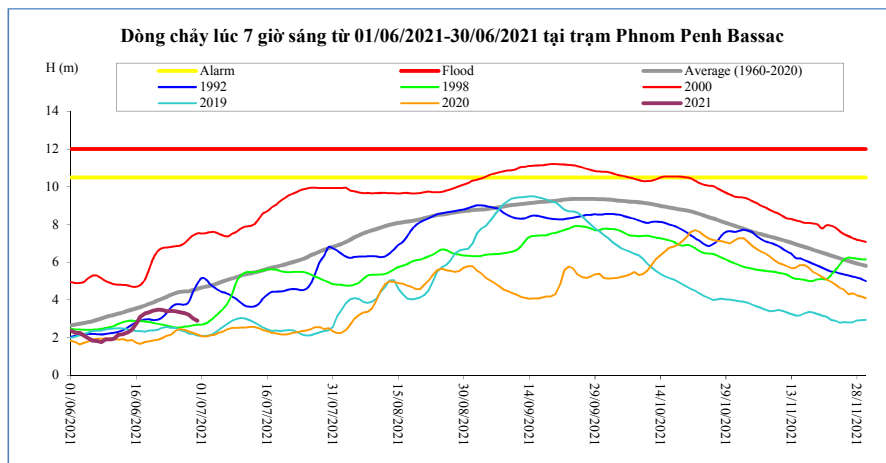
T, gian	H(m)	W(tỷ m <sup>3</sup> )
16/06/21	11,56	8,46
17/06/21	11,76	9,47
18/06/21	11,84	10,49
19/06/21	12,09	11,57
20/06/21	12,20	12,67
21/06/21	12,15	13,76
22/06/21	12,11	14,84
23/06/21	12,07	15,91
24/06/21	11,81	16,92
25/06/21	11,50	17,88
26/06/21	11,18	18,77
27/06/21	10,84	19,59
28/06/21	10,50	20,36
29/06/21	10,34	21,09
<b>30/06/21</b>	<b>10,34</b>	<b>21,82</b>

**Kompong Cham**



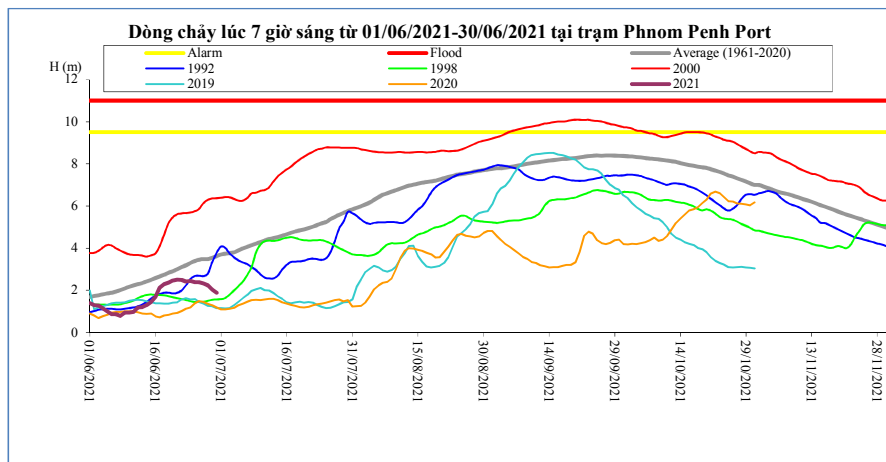
T, gian	H(m)	Hbq(m)
16/06/21	5,53	5,81
17/06/21	6,02	5,94
18/06/21	6,18	6,07
19/06/21	6,33	6,19
20/06/21	6,52	6,31
21/06/21	6,57	6,43
22/06/21	6,49	6,61
23/06/21	6,53	6,78
24/06/21	6,40	6,95
25/06/21	6,18	7,07
26/06/21	5,96	7,17
27/06/21	5,72	7,18
28/06/21	5,41	7,19
29/06/21	5,16	7,31
<b>30/06/21</b>	<b>5,08</b>	<b>7,48</b>

**Phnom Penh Bassac**



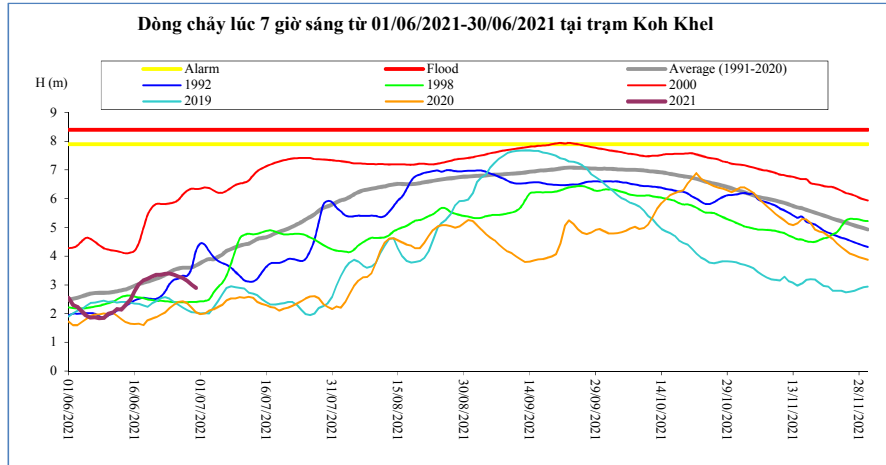
T, gian	H(m)	Hbq(m)
16/06/21	2,76	3,55
17/06/21	3,12	3,62
18/06/21	3,28	3,70
19/06/21	3,35	3,80
20/06/21	3,44	3,87
21/06/21	3,48	3,98
22/06/21	3,47	4,07
23/06/21	3,40	4,17
24/06/21	3,42	4,28
25/06/21	3,40	4,36
26/06/21	3,36	4,43
27/06/21	3,31	4,45
28/06/21	3,22	4,45
29/06/21	3,01	4,52
<b>30/06/21</b>	<b>2,90</b>	<b>4,59</b>

**Phnom Penh Port**



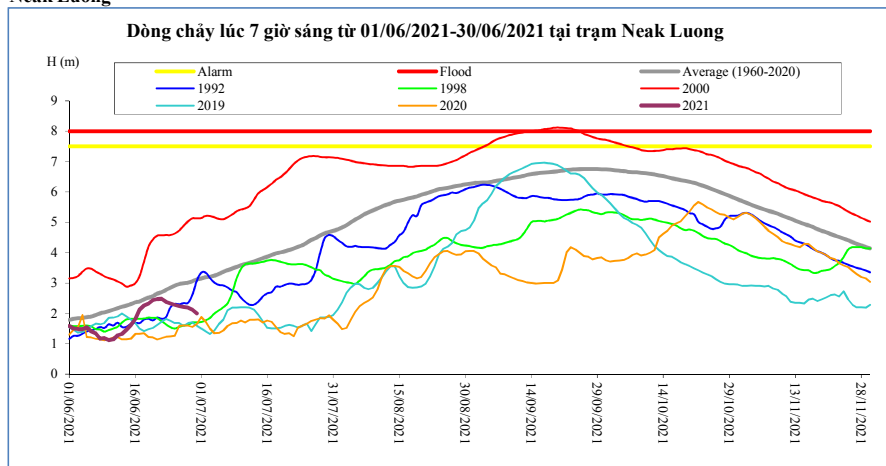
T, gian	H(m)	Hbq(m)
16/06/21	1,69	2,58
17/06/21	2,13	2,66
18/06/21	2,29	2,74
19/06/21	2,37	2,83
20/06/21	2,46	2,91
21/06/21	2,50	3,01
22/06/21	2,49	3,10
23/06/21	2,42	3,19
24/06/21	2,44	3,30
25/06/21	2,39	3,39
26/06/21	2,38	3,45
27/06/21	2,33	3,48
28/06/21	2,24	3,48
29/06/21	2,03	3,55
<b>30/06/21</b>	<b>1,88</b>	<b>3,63</b>

**Koh Khel**



T, gian	H(m)	Hbq(m)
16/06/21	2,77	2,97
17/06/21	3,03	3,03
18/06/21	3,16	3,07
19/06/21	3,22	3,12
20/06/21	3,30	3,16
21/06/21	3,35	3,22
22/06/21	3,35	3,27
23/06/21	3,39	3,35
24/06/21	3,40	3,44
25/06/21	3,35	3,52
26/06/21	3,30	3,57
27/06/21	3,24	3,60
28/06/21	3,14	3,60
29/06/21	3,01	3,61
30/06/21	2,89	3,68

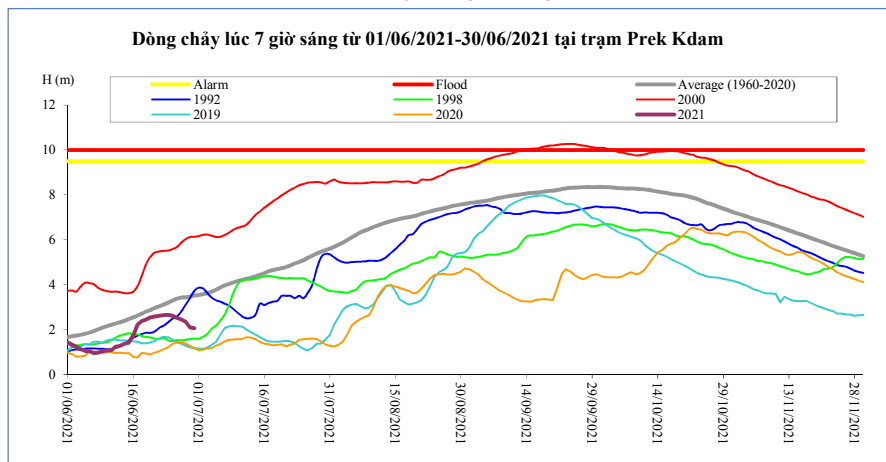
**Neak Luong**



T, gian	H(m)	Hbq(m)
16/06/21	1,82	2,36
17/06/21	2,12	2,39
18/06/21	2,26	2,46
19/06/21	2,32	2,52
20/06/21	2,44	2,57
21/06/21	2,47	2,65
22/06/21	2,48	2,70
23/06/21	2,38	2,77
24/06/21	2,32	2,85
25/06/21	2,28	2,91
26/06/21	2,24	2,96
27/06/21	2,21	2,99
28/06/21	2,18	3,01
29/06/21	2,12	3,06
30/06/21	2,00	3,12

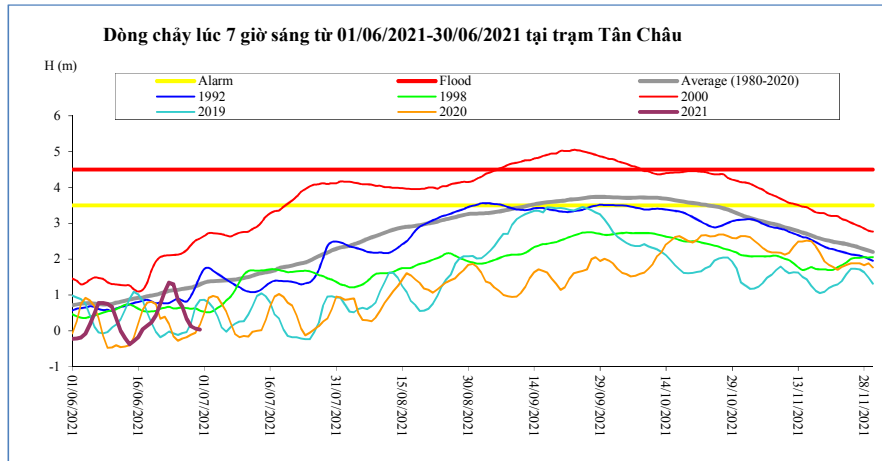
**Prek Kdam**

Biển Hồ chảy ra sông Mê Công,



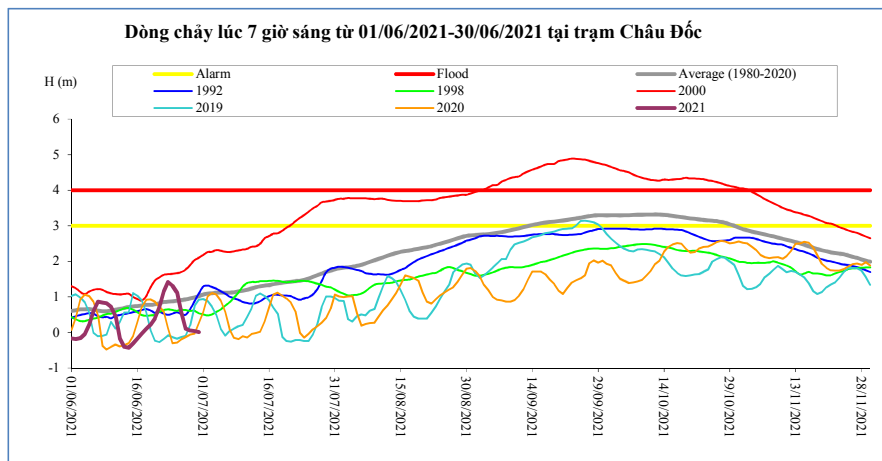
T, gian	H(m)	W (tỷ m <sup>3</sup> )
16/06/21	1,72	1,07
17/06/21	2,21	1,15
18/06/21	2,38	1,20
19/06/21	2,44	1,24
20/06/21	2,55	1,31
21/06/21	2,59	1,36
22/06/21	2,61	1,38
23/06/21	2,64	1,44
24/06/21	2,66	1,50
25/06/21	2,62	1,56
26/06/21	2,52	1,62
27/06/21	2,45	1,65
28/06/21	2,34	1,71
29/06/21	2,11	1,83
30/06/21	2,06	2,07

**Tân Châu**



T, gian	H(m)	Hbq(m)
16/06/21	-0,17	0,92
17/06/21	0,05	0,94
18/06/21	0,15	0,97
19/06/21	0,24	0,99
20/06/21	0,43	1,01
21/06/21	0,75	1,05
22/06/21	1,10	1,08
23/06/21	1,35	1,12
24/06/21	1,30	1,13
25/06/21	0,87	1,15
26/06/21	0,67	1,17
27/06/21	0,34	1,19
28/06/21	0,13	1,21
29/06/21	0,07	1,25
30/06/21	0,04	1,30

**Châu Đốc**



T, gian	H(m)	Hbq(m)
16/06/21	-0,18	0,74
17/06/21	-0,03	0,76
18/06/21	0,10	0,78
19/06/21	0,22	0,78
20/06/21	0,40	0,79
21/06/21	0,71	0,83
22/06/21	1,16	0,86
23/06/21	1,42	0,87
24/06/21	1,32	0,88
25/06/21	1,13	0,89
26/06/21	0,57	0,91
27/06/21	0,11	0,93
28/06/21	0,06	0,96
29/06/21	0,04	0,99
30/06/21	0,01	1,02

Ghi chú:

-: Không có số liệu

H(m): Mức nước lúc 7 giờ sáng lấy theo số liệu thực đo của MRC, W (tỷ m3): Ước tính của Viện Quy hoạch Thủy lợi Miền Nam, W là tổng lượng nước kể từ ngày 1 tháng 6, Riêng Biển Hồ là dung tích hiện tại, Hbq (m): Mức nước trung bình nhiều năm,



### BẢN ĐỒ VỊ TRÍ CÁC TRẠM DỌC DÒNG CHÍNH MÊ CÔNG

