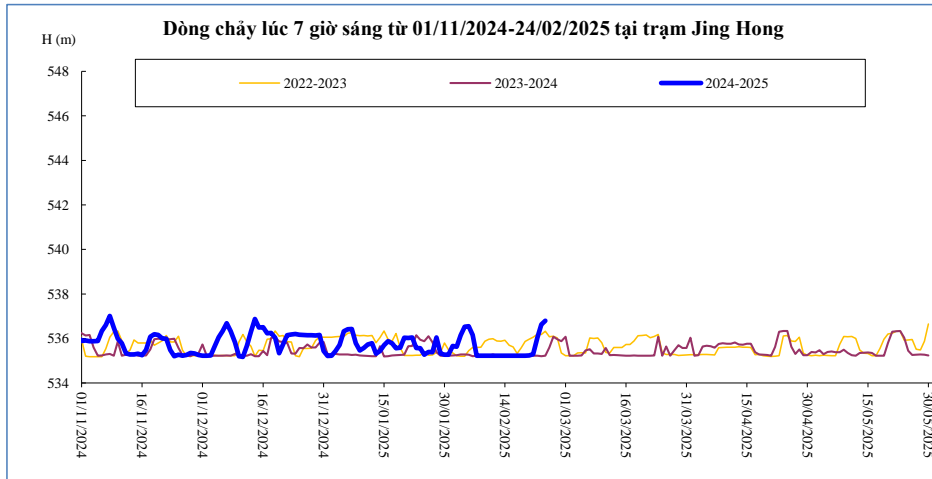


DIỄN BIẾN DÒNG CHẢY TẠI CÁC TRẠM TRÊN DÒNG CHÍNH SÔNG MÊ CÔNG
Dòng chảy lúc 7 giờ sáng từ 01/11/2024-24/02/2025

Jing Hong

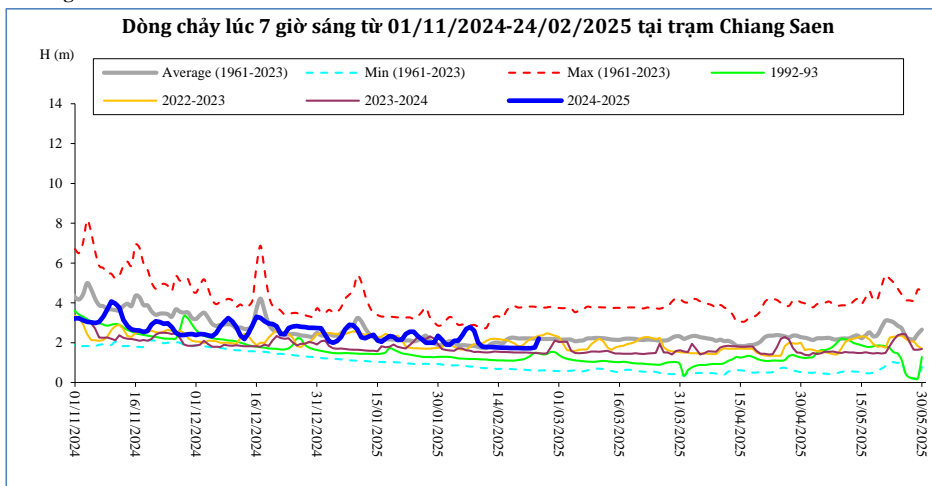
Hôm nay

24/02/2025



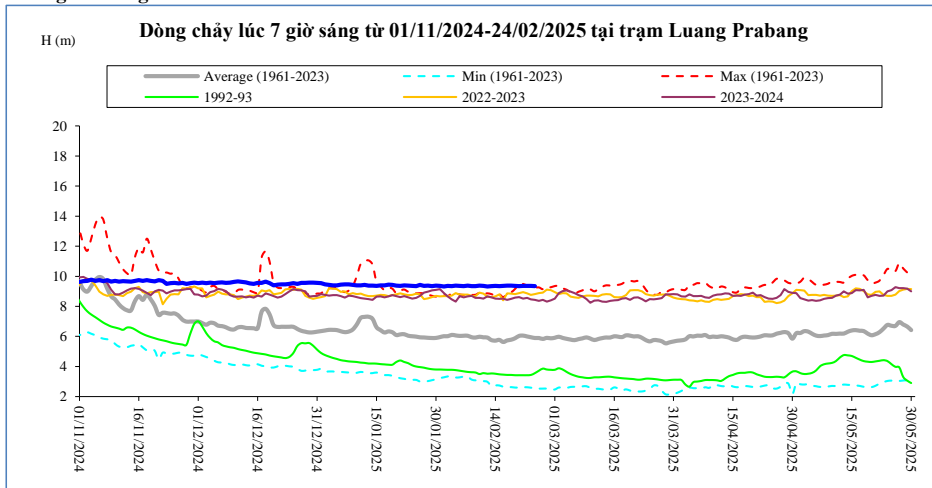
Thời gian	H(m)	W(tỷ m ³)
10/02/2025	535,22	5,75
11/02/2025	535,22	5,81
12/02/2025	535,22	5,87
13/02/2025	535,22	5,92
14/02/2025	535,22	5,98
15/02/2025	535,22	6,03
16/02/2025	535,23	6,09
17/02/2025	535,23	6,14
18/02/2025	535,23	6,20
19/02/2025	535,23	6,26
20/02/2025	535,24	6,31
21/02/2025	535,29	6,37
22/02/2025	536,03	6,46
23/02/2025	536,63	6,58
24/02/2025	536,79	6,71

Chiang Saen



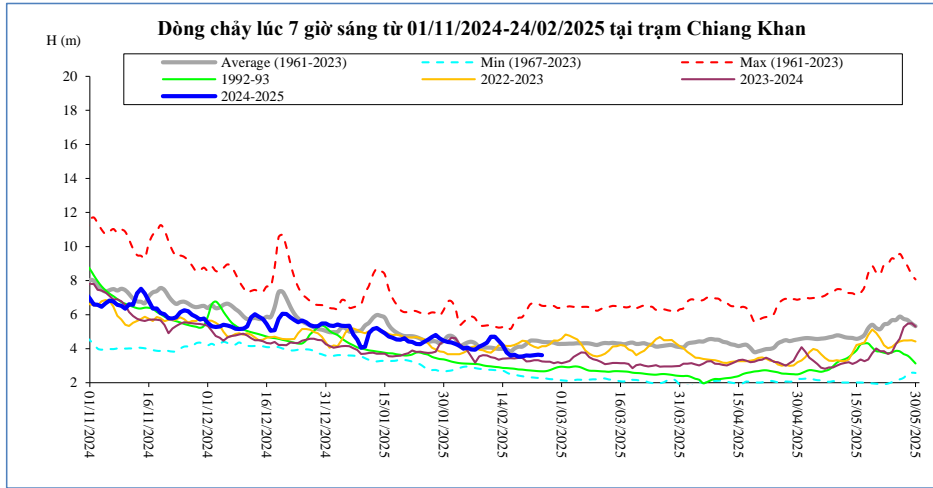
Thời gian	H(m)	W(tỷ m ³)
10/02/2025	1,80	8,85
11/02/2025	1,78	8,93
12/02/2025	1,78	9,01
13/02/2025	1,77	9,09
14/02/2025	1,76	9,16
15/02/2025	1,75	9,24
16/02/2025	1,74	9,31
17/02/2025	1,73	9,39
18/02/2025	1,73	9,46
19/02/2025	1,73	9,53
20/02/2025	1,72	9,61
21/02/2025	1,72	9,68
22/02/2025	1,72	9,75
23/02/2025	1,76	9,83
24/02/2025	2,21	9,93

Luang Prabang



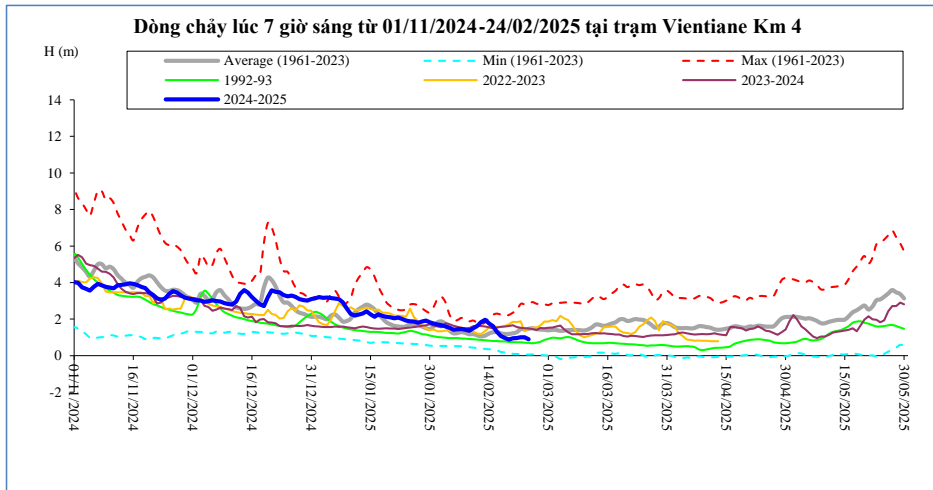
Thời gian	H(m)	W(tỷ m ³)
10/02/2025	9,38	37,13
11/02/2025	9,36	37,64
12/02/2025	9,32	38,14
13/02/2025	9,34	38,64
14/02/2025	9,36	39,15
15/02/2025	9,34	39,65
16/02/2025	9,36	40,16
17/02/2025	9,38	40,67
18/02/2025	9,38	41,18
19/02/2025	9,36	41,68
20/02/2025	9,34	42,18
21/02/2025	9,36	42,69
22/02/2025	9,36	43,20
23/02/2025	9,36	43,70
24/02/2025	9,34	44,21

Chiang Khan Vị trí sau hồ Xayabury



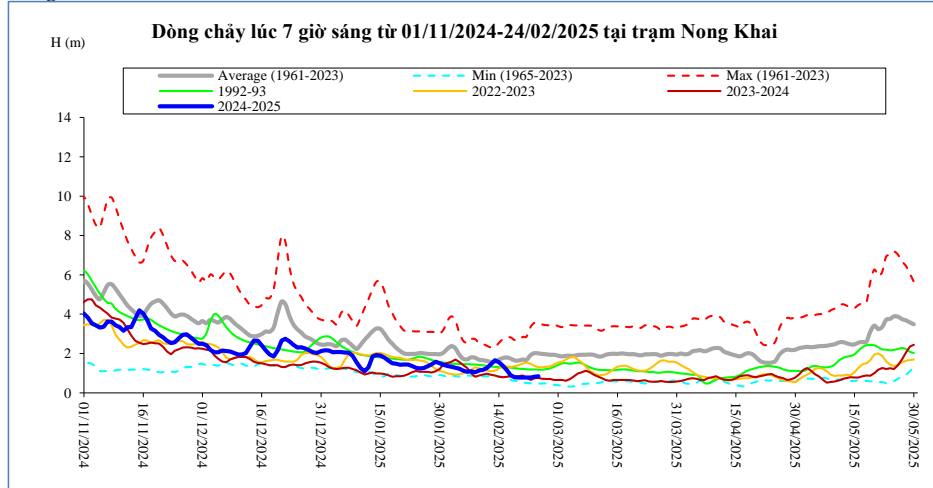
Thời gian	H(m)	W(tỷ m ³)
10/02/2025	4,35	12,85
11/02/2025	4,70	13,01
12/02/2025	4,70	13,17
13/02/2025	4,46	13,31
14/02/2025	4,20	13,45
15/02/2025	3,78	13,56
16/02/2025	3,58	13,66
17/02/2025	3,65	13,77
18/02/2025	3,53	13,87
19/02/2025	3,55	13,98
20/02/2025	3,60	14,08
21/02/2025	3,59	14,18
22/02/2025	3,62	14,29
23/02/2025	3,64	14,40
24/02/2025	3,62	14,50

Vientiane Km 4



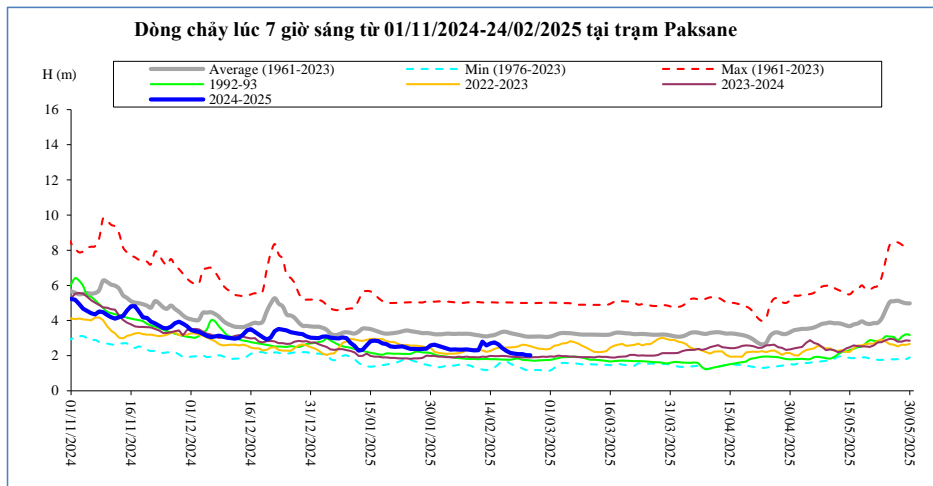
T, gian	H(m)	W(tỷ m ³)
10/02/2025	1,50	13,33
11/02/2025	1,62	13,49
12/02/2025	1,84	13,65
13/02/2025	1,96	13,80
14/02/2025	1,76	13,94
15/02/2025	1,61	14,06
16/02/2025	1,31	14,18
17/02/2025	1,07	14,30
18/02/2025	0,96	14,41
19/02/2025	0,88	14,52
20/02/2025	0,95	14,64
21/02/2025	0,97	14,75
22/02/2025	1,00	14,86
23/02/2025	1,01	14,97
24/02/2025	0,89	15,08

Nong Khai



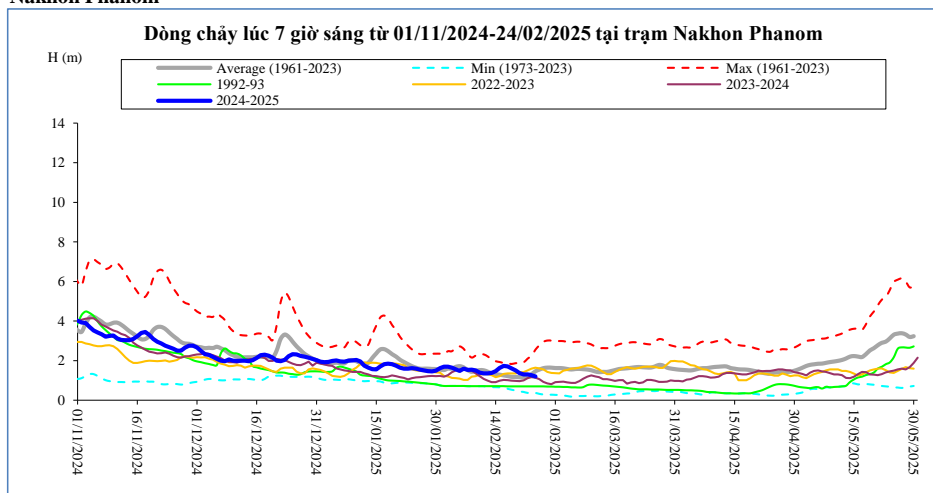
Thời gian	H(m)	W(tỷ m ³)
10/02/2025	1,17	13,53
11/02/2025	1,26	13,70
12/02/2025	1,45	13,86
13/02/2025	1,66	14,01
14/02/2025	1,55	14,15
15/02/2025	1,38	14,28
16/02/2025	1,15	14,40
17/02/2025	0,90	14,53
18/02/2025	0,80	14,64
19/02/2025	0,78	14,76
20/02/2025	0,78	14,88
21/02/2025	0,78	14,99
22/02/2025	0,78	15,11
23/02/2025	0,82	15,22
24/02/2025	0,85	15,34

Paksane



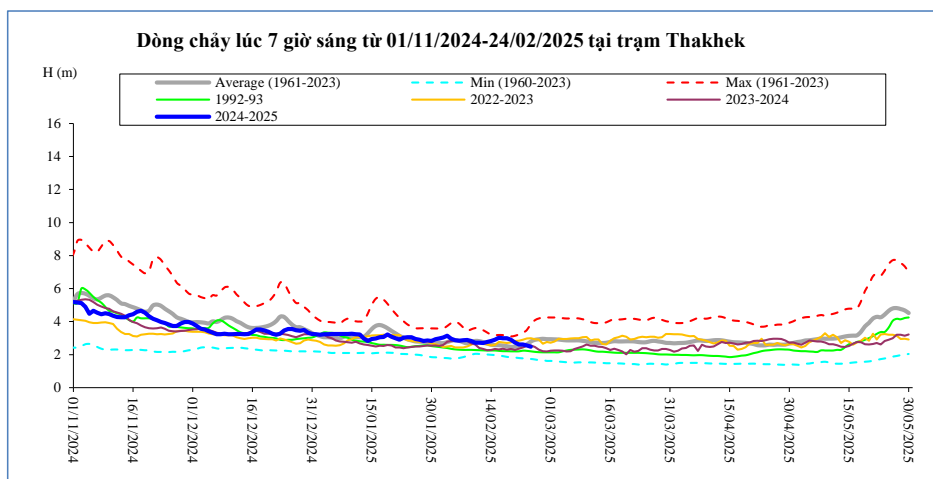
Thời gian	H(m)	W(tỷ m ³)
10/02/2025	2,30	15,32
11/02/2025	2,31	15,49
12/02/2025	2,80	15,66
13/02/2025	2,58	15,83
14/02/2025	2,70	15,99
15/02/2025	2,75	16,16
16/02/2025	2,64	16,33
17/02/2025	2,43	16,49
18/02/2025	2,27	16,65
19/02/2025	2,16	16,80
20/02/2025	2,12	16,95
21/02/2025	2,09	17,09
22/02/2025	2,09	17,24
23/02/2025	2,03	17,38
24/02/2025	2,02	17,51

Nakhon Phanom



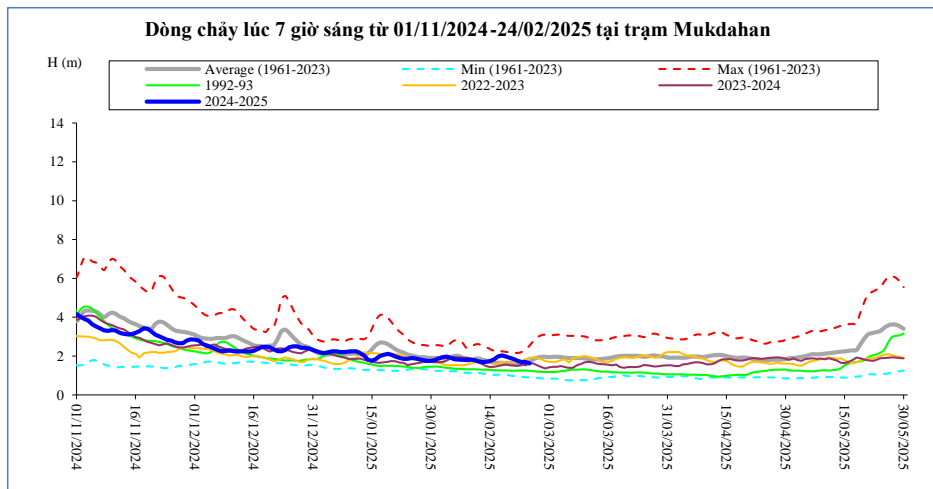
Thời gian	H(m)	W(tỷ m ³)
10/02/2025	1,39	17,44
11/02/2025	1,35	17,62
12/02/2025	1,36	17,80
13/02/2025	1,38	17,98
14/02/2025	1,47	18,17
15/02/2025	1,63	18,38
16/02/2025	1,73	18,61
17/02/2025	1,71	18,82
18/02/2025	1,61	19,03
19/02/2025	1,50	19,23
20/02/2025	1,37	19,41
21/02/2025	1,31	19,58
22/02/2025	1,30	19,76
23/02/2025	1,26	19,93
24/02/2025	1,20	20,09

Thakhek



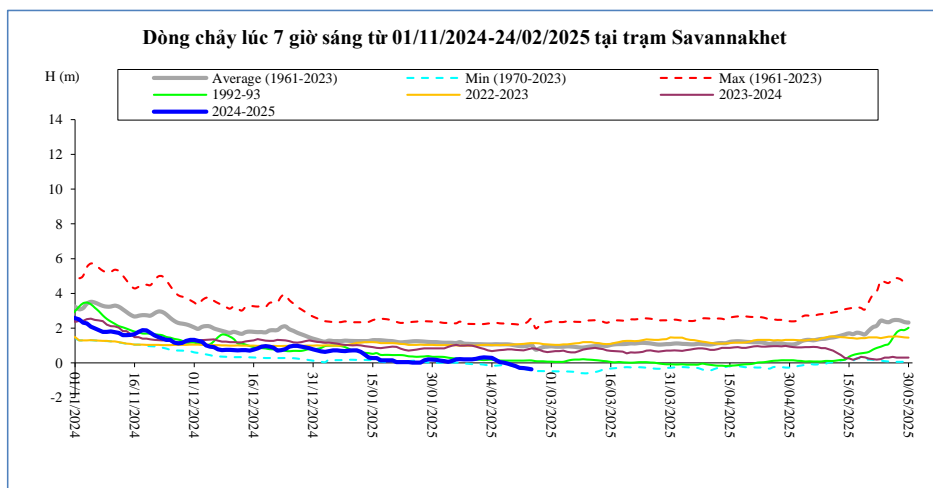
Thời gian	H(m)	W(tỷ m ³)
10/02/2025	2,72	17,37
11/02/2025	2,72	17,56
12/02/2025	2,71	17,75
13/02/2025	2,76	17,94
14/02/2025	2,82	18,14
15/02/2025	2,90	18,35
16/02/2025	3,02	18,57
17/02/2025	2,99	18,79
18/02/2025	3,00	19,01
19/02/2025	2,91	19,22
20/02/2025	2,74	19,41
21/02/2025	2,62	19,59
22/02/2025	2,62	19,77
23/02/2025	2,55	19,95
24/02/2025	2,48	20,12

Mukdahan



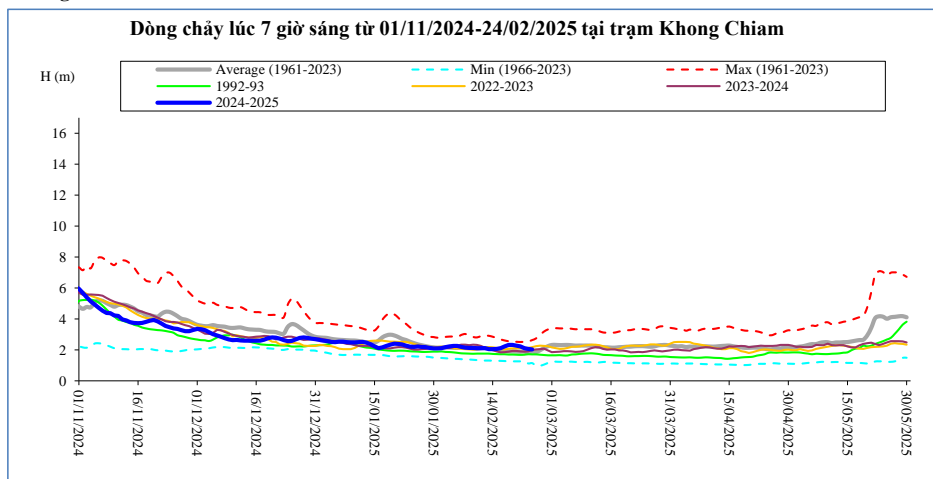
Thời gian	H(m)	W(tỷ m ³)
10/02/2025	1,79	17,60
11/02/2025	1,73	17,79
12/02/2025	1,69	17,98
13/02/2025	1,70	18,18
14/02/2025	1,74	18,38
15/02/2025	1,83	18,59
16/02/2025	1,98	18,81
17/02/2025	2,04	19,03
18/02/2025	1,98	19,25
19/02/2025	1,91	19,47
20/02/2025	1,84	19,66
21/02/2025	1,75	19,85
22/02/2025	1,69	20,03
23/02/2025	1,69	20,21
24/02/2025	1,62	20,38

Savannakhet



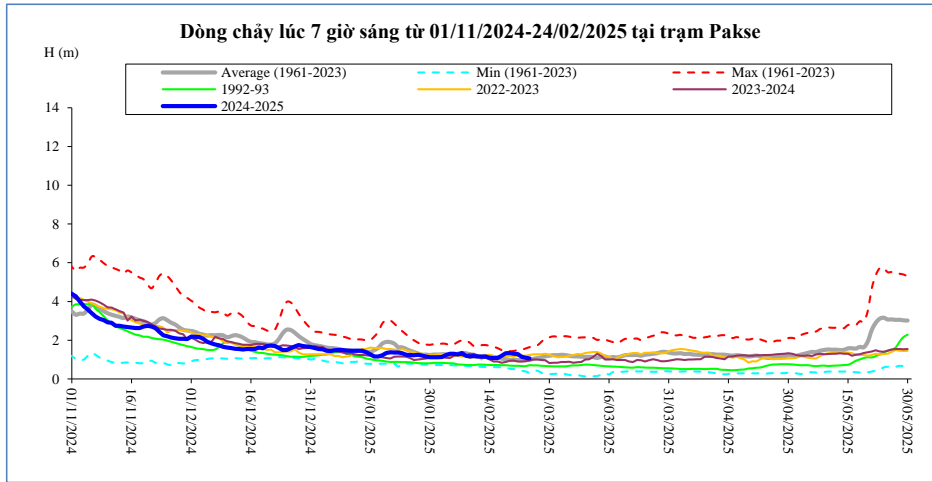
Thời gian	H(m)	W(tỷ m ³)
10/02/2025	0,23	17,61
11/02/2025	0,29	17,80
12/02/2025	0,32	17,99
13/02/2025	0,31	18,19
14/02/2025	0,29	18,39
15/02/2025	0,18	18,60
16/02/2025	0,04	18,82
17/02/2025	0,01	19,04
18/02/2025	-0,04	19,27
19/02/2025	-0,11	19,48
20/02/2025	-0,19	19,68
21/02/2025	-0,28	19,86
22/02/2025	-0,30	20,05
23/02/2025	-0,33	20,23
24/02/2025	-0,37	20,40

Khong Chiam



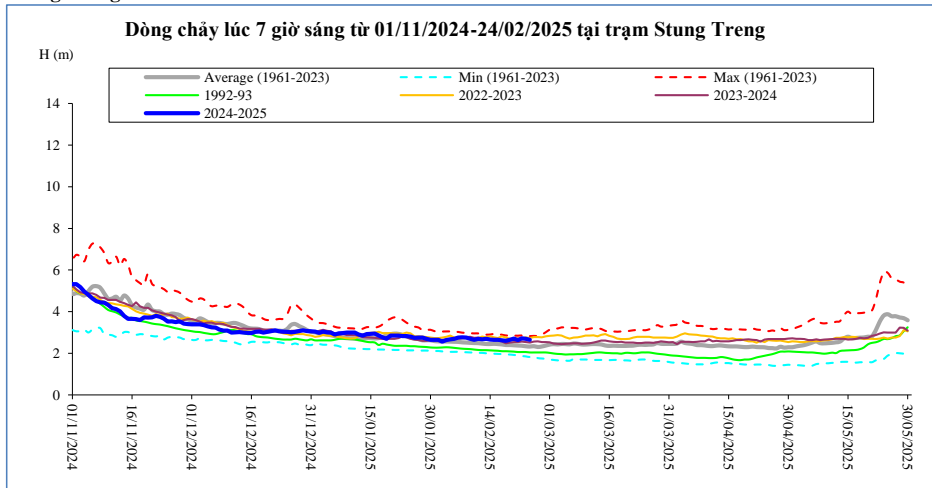
Thời gian	H(m)	W(tỷ m ³)
10/02/2025	2,12	19,12
11/02/2025	2,12	19,33
12/02/2025	2,11	19,54
13/02/2025	2,05	19,74
14/02/2025	2,04	19,93
15/02/2025	2,07	20,14
16/02/2025	2,12	20,34
17/02/2025	2,23	20,57
18/02/2025	2,33	20,81
19/02/2025	2,33	21,05
20/02/2025	2,27	21,27
21/02/2025	2,22	21,50
22/02/2025	2,11	21,70
23/02/2025	2,06	21,90
24/02/2025	2,03	22,10

Pakse



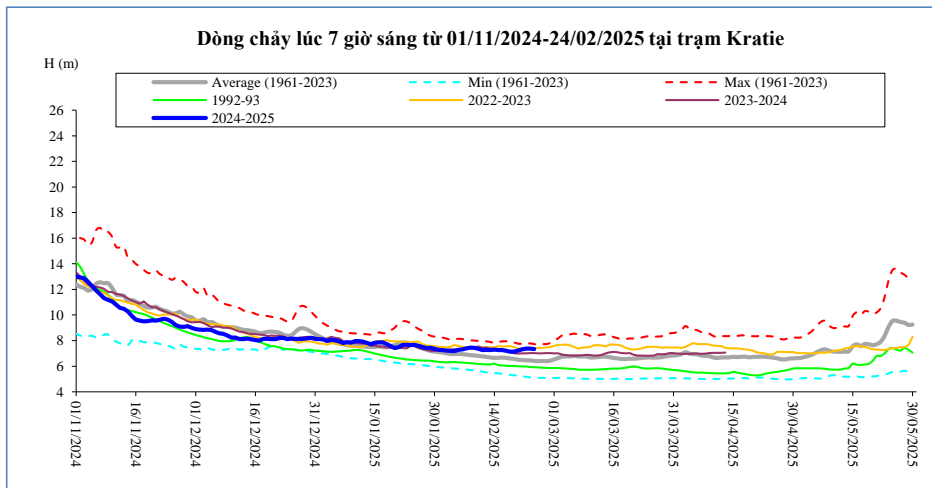
Thời gian	H(m)	W(tỷ m ³)
10/02/2025	1,18	19,89
11/02/2025	1,16	20,12
12/02/2025	1,14	20,34
13/02/2025	1,16	20,56
14/02/2025	1,10	20,78
15/02/2025	1,08	20,99
16/02/2025	1,08	21,20
17/02/2025	1,20	21,43
18/02/2025	1,32	21,68
19/02/2025	1,34	21,93
20/02/2025	1,30	22,18
21/02/2025	1,29	22,42
22/02/2025	1,14	22,64
23/02/2025	1,10	22,86
24/02/2025	1,06	23,07

Stung Treng



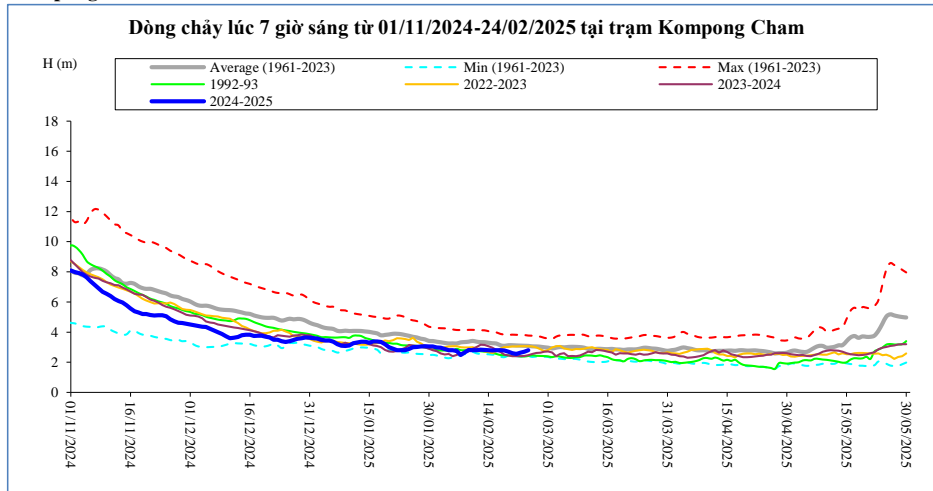
Thời gian	H(m)	W(tỷ m ³)
10/02/2025	2,65	24,96
11/02/2025	2,70	25,23
12/02/2025	2,67	25,49
13/02/2025	2,69	25,75
14/02/2025	2,66	26,02
15/02/2025	2,65	26,28
16/02/2025	2,65	26,54
17/02/2025	2,62	26,80
18/02/2025	2,60	27,06
19/02/2025	2,65	27,31
20/02/2025	2,71	27,57
21/02/2025	2,63	27,84
22/02/2025	2,72	28,12
23/02/2025	2,69	28,39
24/02/2025	2,65	28,66

Kratie



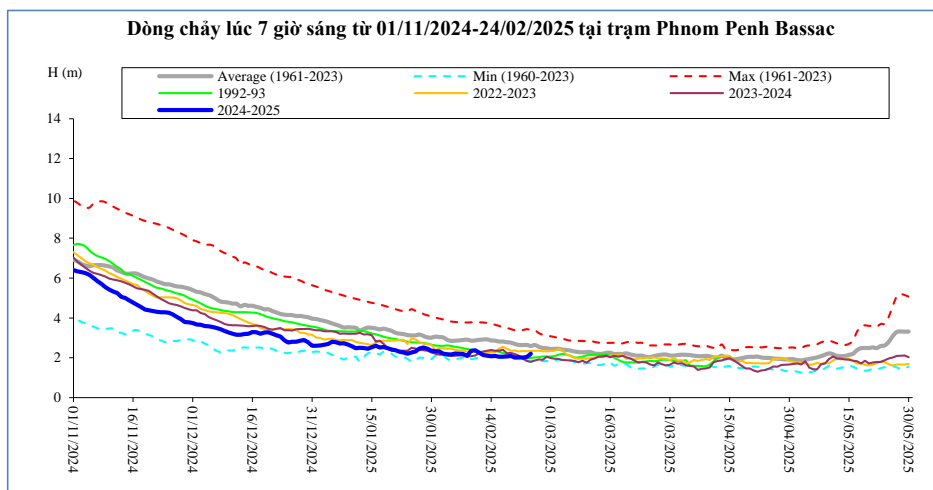
Thời gian	H(m)	W(tỷ m ³)
10/02/2025	7,35	25,63
11/02/2025	7,25	25,90
12/02/2025	7,28	26,17
13/02/2025	7,25	26,44
14/02/2025	7,30	26,71
15/02/2025	7,25	26,98
16/02/2025	7,25	27,25
17/02/2025	7,21	27,51
18/02/2025	7,14	27,76
19/02/2025	7,14	28,02
20/02/2025	7,22	28,28
21/02/2025	7,31	28,56
22/02/2025	7,37	28,84
23/02/2025	7,37	29,12
24/02/2025	7,34	29,40

Kompong Cham



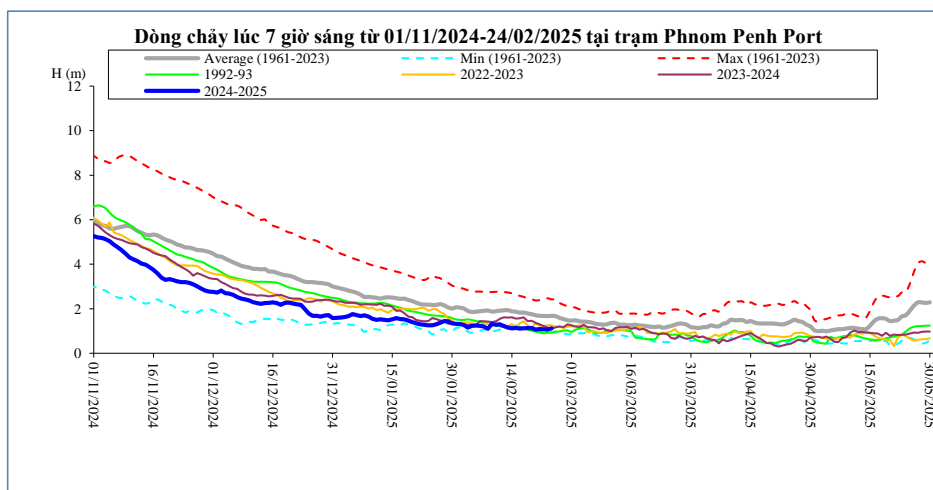
Thời gian	H(m)	Hbq(m)
10/02/2025	2,80	3,42
11/02/2025	2,80	3,37
12/02/2025	2,84	3,34
13/02/2025	2,82	3,33
14/02/2025	2,80	3,30
15/02/2025	2,78	3,26
16/02/2025	2,80	3,24
17/02/2025	2,80	3,13
18/02/2025	2,78	3,09
19/02/2025	2,70	3,13
20/02/2025	2,60	3,13
21/02/2025	2,55	3,12
22/02/2025	2,64	3,11
23/02/2025	2,70	3,10
24/02/2025	2,80	3,09

Phnom Penh Bassac



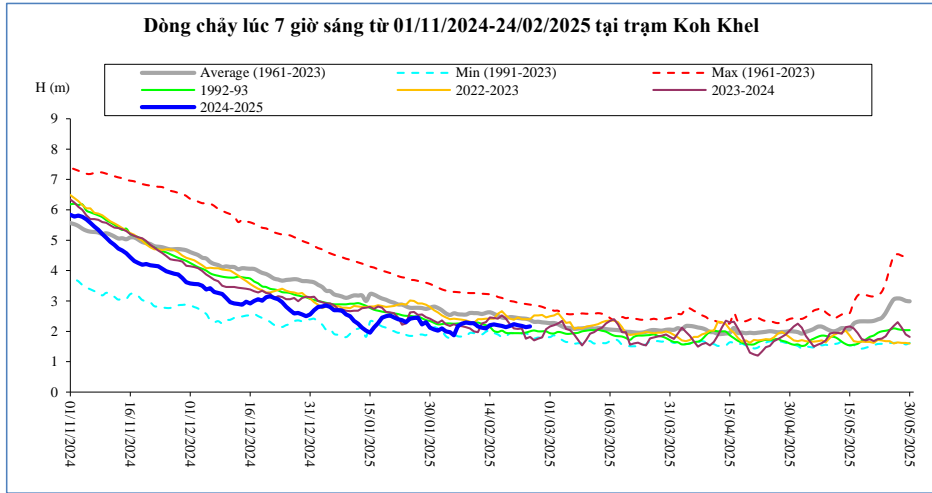
Thời gian	H(m)	Hbq(m)
10/02/2025	2,38	2,87
11/02/2025	2,25	2,90
12/02/2025	2,14	2,92
13/02/2025	2,10	2,93
14/02/2025	2,08	2,88
15/02/2025	2,09	2,86
16/02/2025	2,05	2,82
17/02/2025	2,05	2,82
18/02/2025	2,07	2,78
19/02/2025	2,09	2,76
20/02/2025	2,01	2,69
21/02/2025	2,03	2,65
22/02/2025	2,01	2,64
23/02/2025	2,04	2,65
24/02/2025	2,20	2,59

Phnom Penh Port



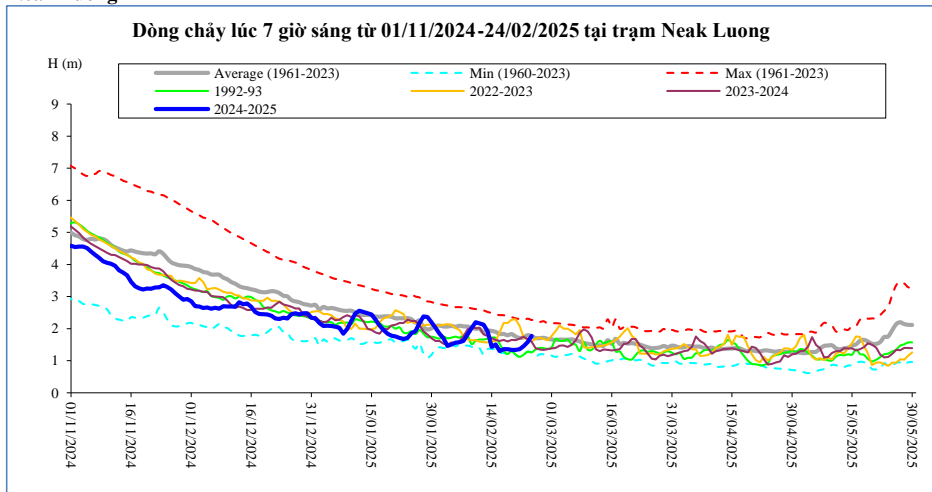
Thời gian	H(m)	Hbq(m)
10/02/2025	1,28	1,89
11/02/2025	1,30	1,91
12/02/2025	1,22	1,93
13/02/2025	1,15	1,94
14/02/2025	1,12	1,89
15/02/2025	1,13	1,87
16/02/2025	1,11	1,83
17/02/2025	1,12	1,83
18/02/2025	1,13	1,79
19/02/2025	1,13	1,76
20/02/2025	1,07	1,71
21/02/2025	1,09	1,68
22/02/2025	1,08	1,68
23/02/2025	1,06	1,67
24/02/2025	1,12	1,68

Koh Khel



Thời gian	H(m)	Hbq(m)
10/02/2025	2,27	2,60
11/02/2025	2,16	2,60
12/02/2025	2,12	2,57
13/02/2025	2,10	2,61
14/02/2025	2,20	2,63
15/02/2025	2,23	2,58
16/02/2025	2,20	2,51
17/02/2025	2,18	2,46
18/02/2025	2,14	2,44
19/02/2025	2,18	2,47
20/02/2025	2,24	2,46
21/02/2025	2,20	2,44
22/02/2025	2,18	2,43
23/02/2025	2,14	2,42
24/02/2025	2,16	2,38

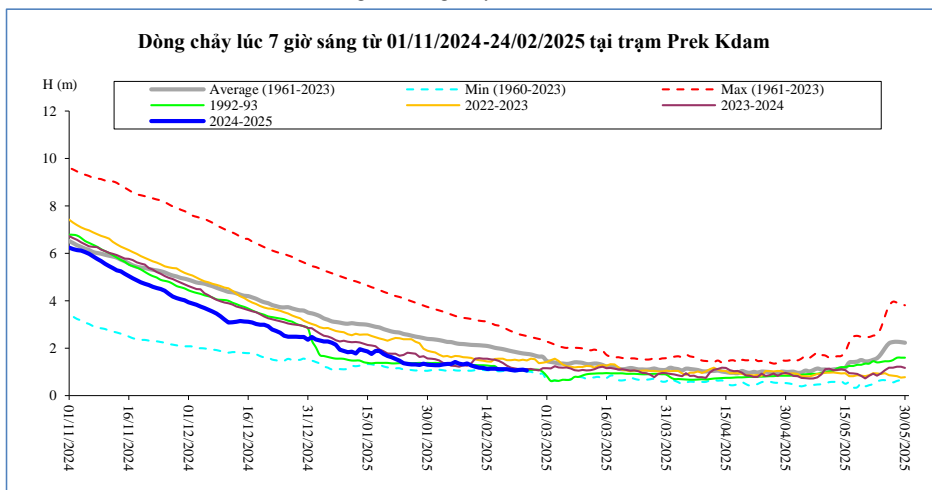
Neak Luong



Thời gian	H(m)	Hbq(m)
10/02/2025	2,20	2,00
11/02/2025	2,16	2,00
12/02/2025	2,12	1,88
13/02/2025	1,91	1,94
14/02/2025	1,43	1,93
15/02/2025	1,51	1,90
16/02/2025	1,30	1,83
17/02/2025	1,36	1,84
18/02/2025	1,36	1,80
19/02/2025	1,34	1,83
20/02/2025	1,34	1,76
21/02/2025	1,36	1,71
22/02/2025	1,45	1,73
23/02/2025	1,58	1,80
24/02/2025	1,77	1,77

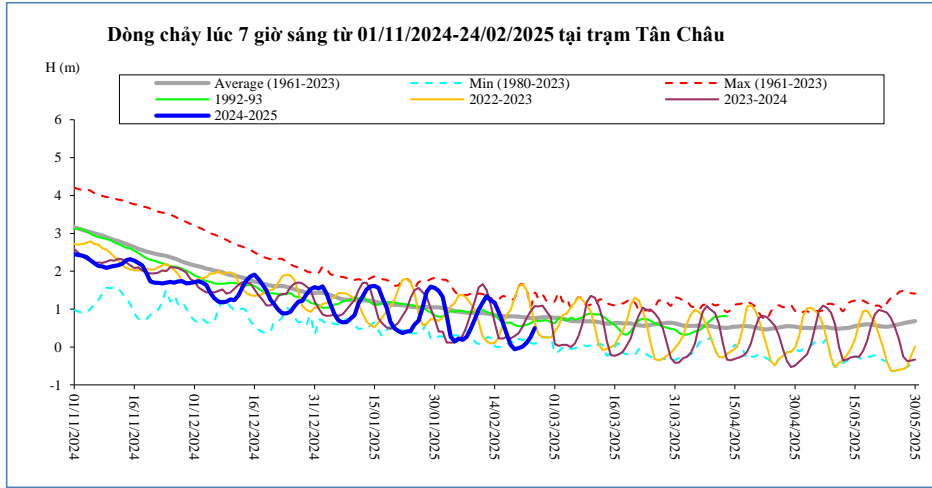
Prek Kdam

Sông Mê Công chảy vào Biển Hồ,



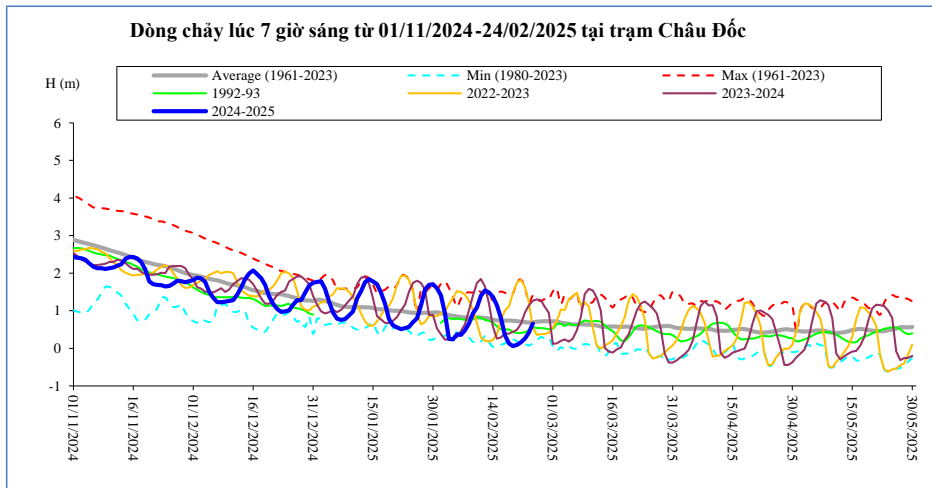
Thời gian	H(m)	Hbq(m)
10/02/2025	1,27	2,14
11/02/2025	1,22	2,13
12/02/2025	1,18	2,13
13/02/2025	1,17	2,11
14/02/2025	1,13	2,10
15/02/2025	1,14	2,06
16/02/2025	1,14	2,02
17/02/2025	1,12	1,99
18/02/2025	1,12	1,96
19/02/2025	1,11	1,92
20/02/2025	1,08	1,88
21/02/2025	1,06	1,85
22/02/2025	1,08	1,81
23/02/2025	1,09	1,78
24/02/2025	1,06	1,76

Tân Châu



Thời gian	H(m)	Hbq(m)
10/02/2025	0,99	0,90
11/02/2025	1,17	0,89
12/02/2025	1,34	0,89
13/02/2025	1,23	0,87
14/02/2025	1,17	0,84
15/02/2025	0,93	0,82
16/02/2025	0,66	0,81
17/02/2025	0,35	0,81
18/02/2025	0,06	0,81
19/02/2025	-0,06	0,81
20/02/2025	-0,03	0,80
21/02/2025	0,01	0,79
22/02/2025	0,11	0,78
23/02/2025	0,26	0,76
24/02/2025	0,50	0,76

Châu Đốc



Thời gian	H(m)	Hbq(m)
10/02/2025	1,09	0,82
11/02/2025	1,40	0,82
12/02/2025	1,54	0,81
13/02/2025	1,49	0,79
14/02/2025	1,37	0,76
15/02/2025	1,15	0,75
16/02/2025	0,81	0,74
17/02/2025	0,35	0,74
18/02/2025	0,13	0,74
19/02/2025	0,06	0,73
20/02/2025	0,09	0,72
21/02/2025	0,16	0,71
22/02/2025	0,26	0,70
23/02/2025	0,42	0,69
24/02/2025	0,66	0,69

Ghi chú:

-: Không có số liệu

H(m): Mức nước lúc 7 giờ sáng lấy theo số liệu thực đo của MRC, W (tỷ m³): Ước tính của Viện Quy hoạch Thủy lợi Miền Nam,

W là tổng lượng nước kể từ ngày 01 tháng 12 năm 2024. Riêng Biển Hồ là dung tích hiện tại, Hbq (m): Mức nước trung bình nhiều năm,

BẢN ĐỒ VỊ TRÍ CÁC TRẠM DỌC DÒNG CHÍNH MÊ CÔNG

