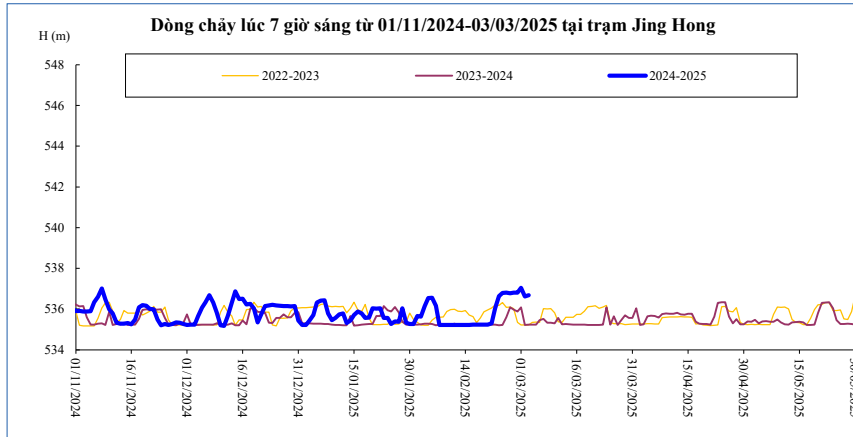


**DIỄN BIẾN DÒNG CHẢY TẠI CÁC TRẠM TRÊN DÒNG CHÍNH SÔNG MÊ CÔNG**  
**Dòng chảy lúc 7 giờ sáng từ 01/11/2024-03/03/2025**

**Jing Hong**

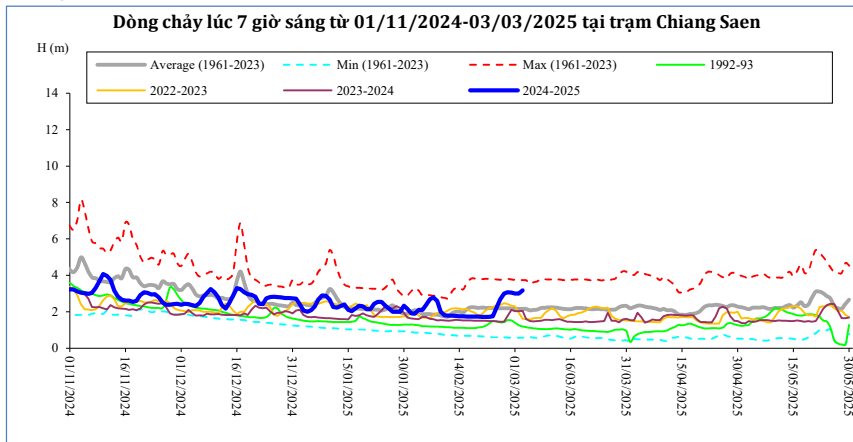
Hôm nay

03/03/2025



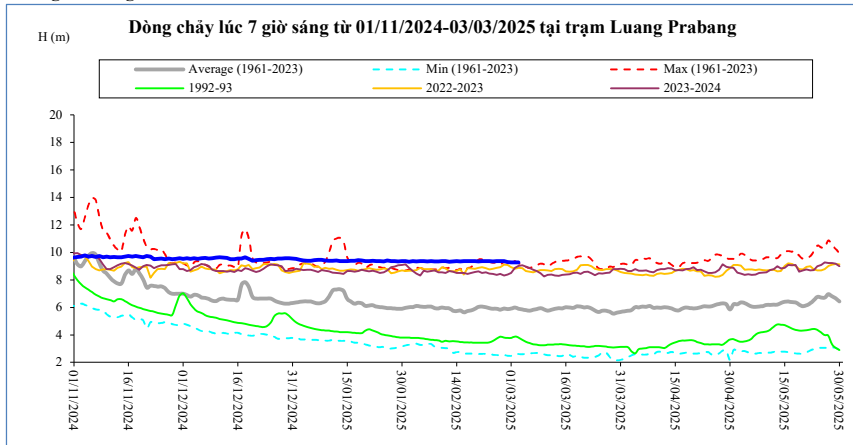
Thời gian	H(m)	W(tỷ m <sup>3</sup> )
17/02/2025	535,23	6,14
18/02/2025	535,23	6,20
19/02/2025	535,23	6,26
20/02/2025	535,24	6,31
21/02/2025	535,29	6,37
22/02/2025	536,03	6,46
23/02/2025	536,63	6,58
24/02/2025	536,79	6,71
25/02/2025	536,80	6,84
26/02/2025	536,77	6,96
27/02/2025	536,81	7,09
28/02/2025	536,80	7,22
01/03/2025	537,05	7,36
02/03/2025	536,61	7,48
03/03/2025	536,68	7,60

**Chiang Saen**



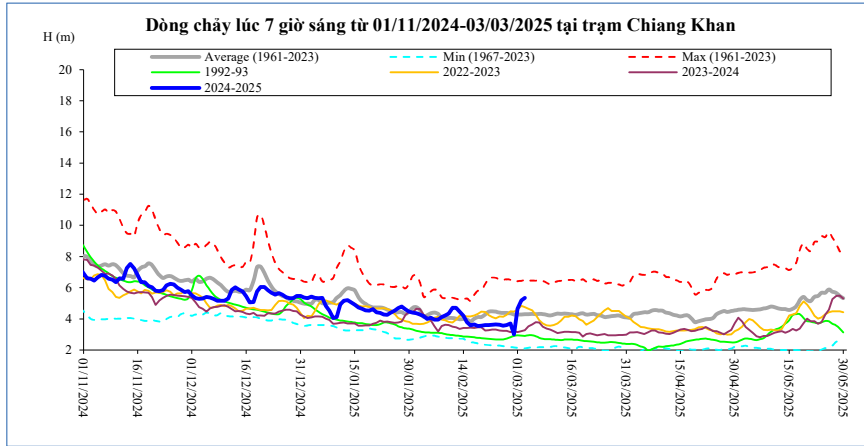
Thời gian	H(m)	W(tỷ m <sup>3</sup> )
17/02/2025	1,73	9,39
18/02/2025	1,73	9,46
19/02/2025	1,73	9,53
20/02/2025	1,72	9,61
21/02/2025	1,72	9,68
22/02/2025	1,72	9,75
23/02/2025	1,76	9,83
24/02/2025	2,21	9,93
25/02/2025	2,69	10,07
26/02/2025	3,00	10,23
27/02/2025	3,07	10,39
28/02/2025	3,06	10,55
01/03/2025	3,00	10,71
02/03/2025	3,00	10,87
03/03/2025	3,17	11,04

**Luang Prabang**



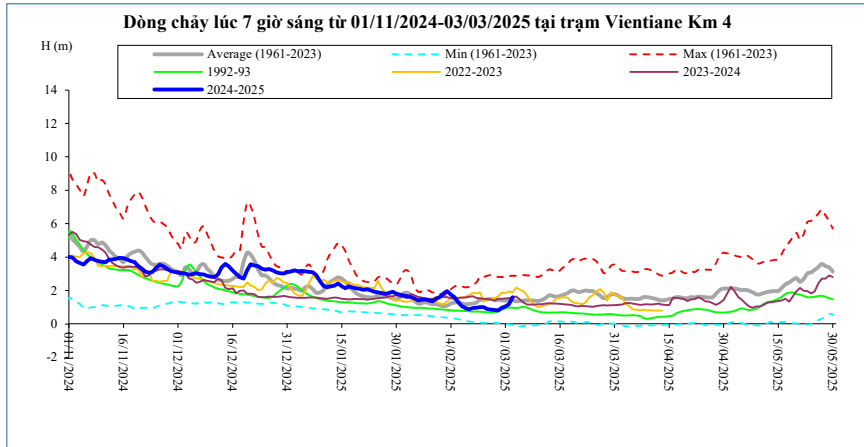
Thời gian	H(m)	W(tỷ m <sup>3</sup> )
17/02/2025	9,38	40,67
18/02/2025	9,38	41,18
19/02/2025	9,36	41,68
20/02/2025	9,34	42,18
21/02/2025	9,36	42,69
22/02/2025	9,36	43,20
23/02/2025	9,36	43,70
24/02/2025	9,34	44,21
25/02/2025	9,36	44,71
26/02/2025	9,38	45,22
27/02/2025	9,38	45,73
28/02/2025	9,30	46,23
01/03/2025	9,28	46,72
02/03/2025	9,26	47,22
03/03/2025	9,28	47,72

**Chiang Khan**      Vị trí sau hồ Xayabury



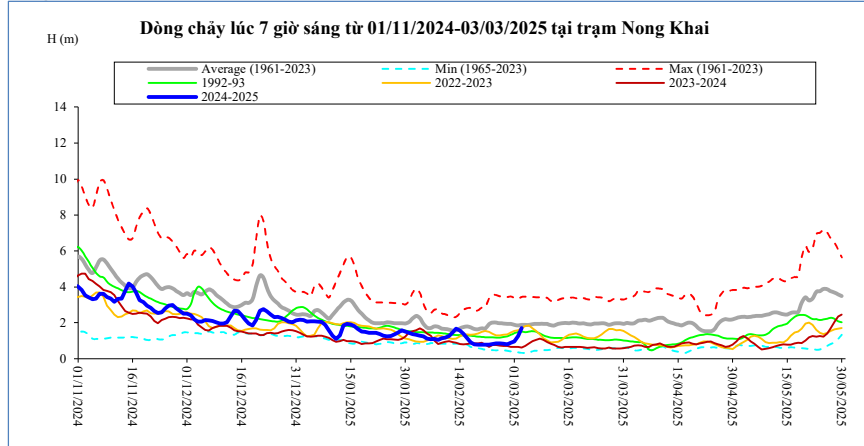
Thời gian	H(m)	W(tỷ m <sup>3</sup> )
17/02/2025	3,65	13,77
18/02/2025	3,53	13,87
19/02/2025	3,55	13,98
20/02/2025	3,60	14,08
21/02/2025	3,59	14,18
22/02/2025	3,62	14,29
23/02/2025	3,64	14,40
24/02/2025	3,62	14,50
25/02/2025	3,55	14,61
26/02/2025	3,60	14,71
27/02/2025	3,71	14,82
28/02/2025	3,00	14,90
01/03/2025	4,65	15,06
02/03/2025	5,19	15,25
03/03/2025	5,35	15,45

**Vientiane Km 4**



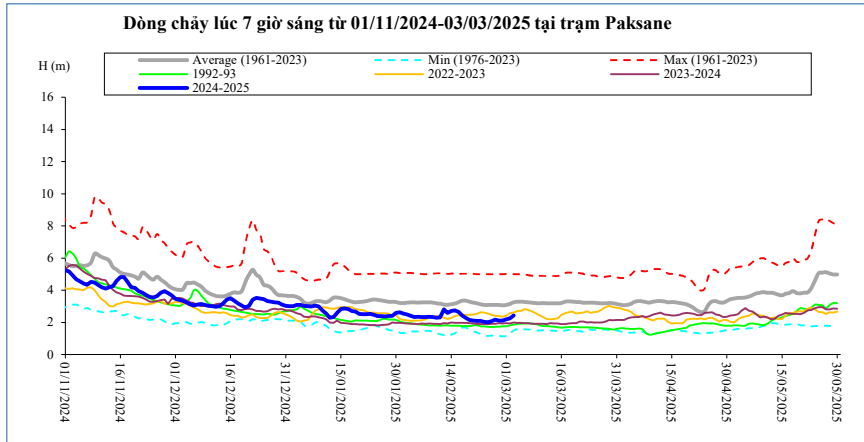
T, gian	H(m)	W(tỷ m <sup>3</sup> )
17/02/2025	1,07	14,30
18/02/2025	0,96	14,41
19/02/2025	0,88	14,52
20/02/2025	0,95	14,64
21/02/2025	0,97	14,75
22/02/2025	1,00	14,86
23/02/2025	1,01	14,97
24/02/2025	0,89	15,08
25/02/2025	0,85	15,19
26/02/2025	0,83	15,30
27/02/2025	0,80	15,42
28/02/2025	0,97	15,51
01/03/2025	1,04	15,67
02/03/2025	1,19	15,86
03/03/2025	1,60	16,05

**Nong Khai**



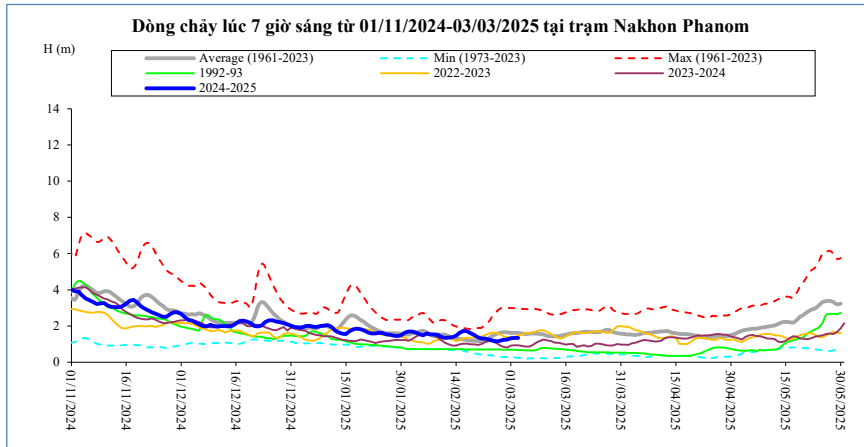
Thời gian	H(m)	W(tỷ m <sup>3</sup> )
17/02/2025	0,90	14,53
18/02/2025	0,80	14,64
19/02/2025	0,78	14,76
20/02/2025	0,78	14,88
21/02/2025	0,78	14,99
22/02/2025	0,78	15,11
23/02/2025	0,82	15,22
24/02/2025	0,85	15,34
25/02/2025	0,85	15,45
26/02/2025	0,83	15,56
27/02/2025	0,80	15,68
28/02/2025	0,88	15,78
01/03/2025	0,96	15,96
02/03/2025	1,25	16,17
03/03/2025	1,70	16,40

**Paksane**



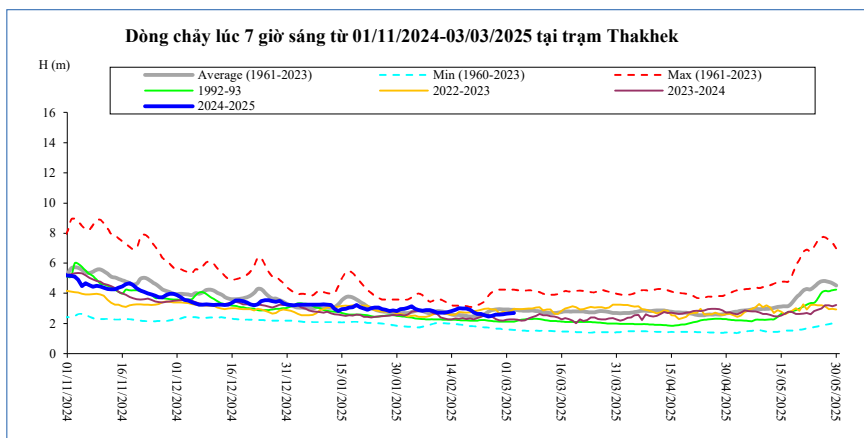
Thời gian	H(m)	W(tỷ m <sup>3</sup> )
17/02/2025	2,43	16,49
18/02/2025	2,27	16,65
19/02/2025	2,16	16,80
20/02/2025	2,12	16,95
21/02/2025	2,09	17,09
22/02/2025	2,09	17,24
23/02/2025	2,03	17,38
24/02/2025	2,02	17,51
25/02/2025	2,07	17,64
26/02/2025	2,17	17,78
27/02/2025	2,11	17,92
28/02/2025	2,11	18,05
01/03/2025	2,19	18,21
02/03/2025	2,25	18,40
03/03/2025	2,42	18,59

**Nakhon Phanom**



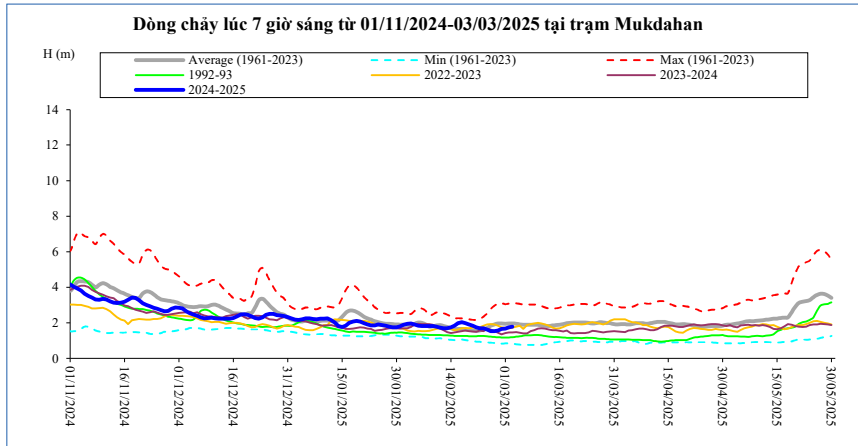
Thời gian	H(m)	W(tỷ m <sup>3</sup> )
17/02/2025	1,71	18,82
18/02/2025	1,61	19,03
19/02/2025	1,50	19,23
20/02/2025	1,37	19,41
21/02/2025	1,31	19,58
22/02/2025	1,30	19,76
23/02/2025	1,26	19,93
24/02/2025	1,20	20,09
25/02/2025	1,15	20,25
26/02/2025	1,19	20,41
27/02/2025	1,24	20,57
28/02/2025	1,25	20,74
01/03/2025	1,32	20,92
02/03/2025	1,34	21,09
03/03/2025	1,35	21,27

**Thakhek**



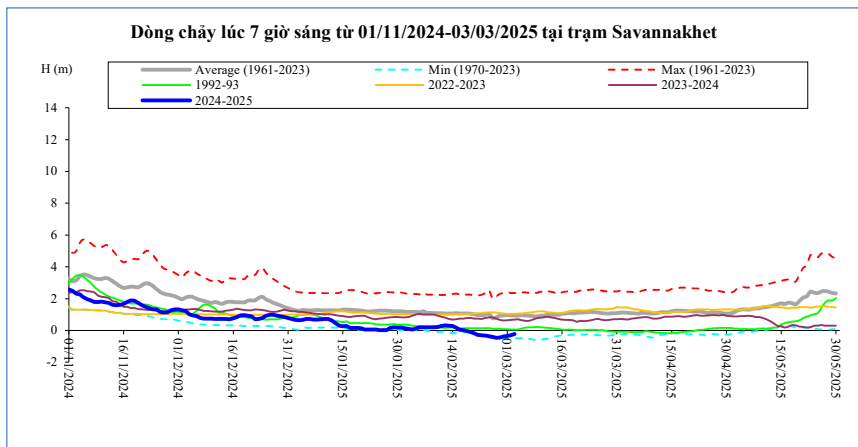
Thời gian	H(m)	W(tỷ m <sup>3</sup> )
17/02/2025	2,99	18,79
18/02/2025	3,00	19,01
19/02/2025	2,91	19,22
20/02/2025	2,74	19,41
21/02/2025	2,62	19,59
22/02/2025	2,62	19,77
23/02/2025	2,55	19,95
24/02/2025	2,48	20,12
25/02/2025	2,50	20,28
26/02/2025	2,58	20,46
27/02/2025	2,59	20,64
28/02/2025	2,60	20,82
01/03/2025	2,65	21,00
02/03/2025	2,68	21,19
03/03/2025	2,70	21,38

**Mukdahan**



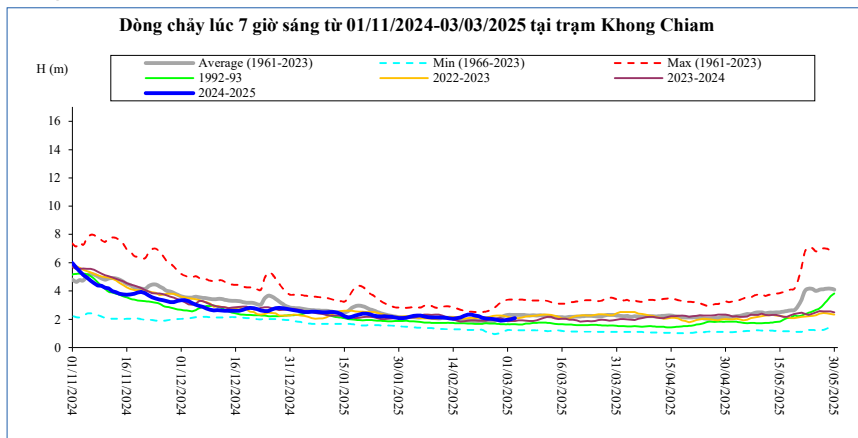
Thời gian	H(m)	W(tỷ m <sup>3</sup> )
17/02/2025	2,04	19,03
18/02/2025	1,98	19,25
19/02/2025	1,91	19,47
20/02/2025	1,84	19,66
21/02/2025	1,75	19,85
22/02/2025	1,69	20,03
23/02/2025	1,69	20,21
24/02/2025	1,62	20,38
25/02/2025	1,54	20,56
26/02/2025	1,54	20,73
27/02/2025	1,57	20,91
28/02/2025	1,65	21,09
01/03/2025	1,67	21,28
02/03/2025	1,74	21,47
03/03/2025	1,78	21,66

**Savannakhet**



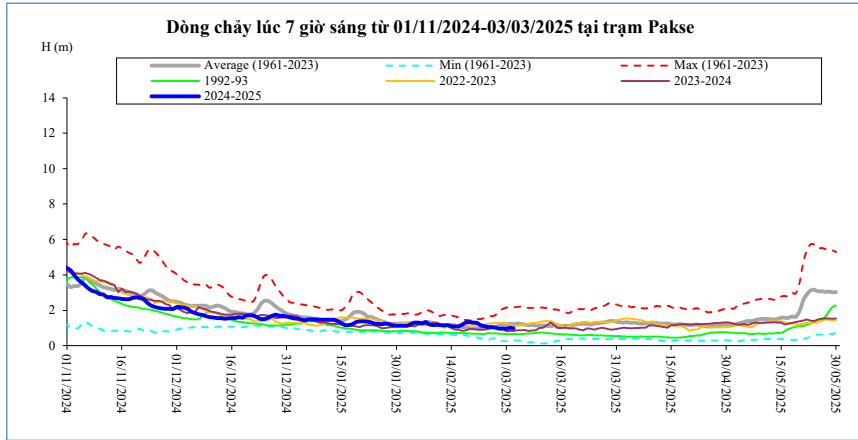
Thời gian	H(m)	W(tỷ m <sup>3</sup> )
17/02/2025	0,01	19,04
18/02/2025	-0,04	19,27
19/02/2025	-0,11	19,48
20/02/2025	-0,19	19,68
21/02/2025	-0,28	19,86
22/02/2025	-0,30	20,05
23/02/2025	-0,33	20,23
24/02/2025	-0,37	20,40
25/02/2025	-0,40	20,57
26/02/2025	-0,47	20,75
27/02/2025	-0,45	20,93
28/02/2025	-0,39	21,11
01/03/2025	-0,34	21,29
02/03/2025	-0,30	21,48
03/03/2025	-0,23	21,67

**Khong Chiam**



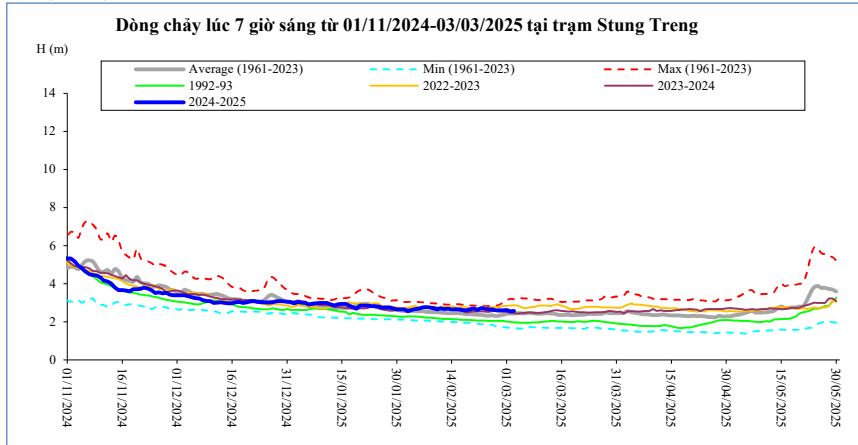
Thời gian	H(m)	W(tỷ m <sup>3</sup> )
17/02/2025	2,23	20,57
18/02/2025	2,33	20,81
19/02/2025	2,33	21,05
20/02/2025	2,27	21,27
21/02/2025	2,22	21,50
22/02/2025	2,11	21,70
23/02/2025	2,06	21,90
24/02/2025	2,03	22,10
25/02/2025	2,01	22,29
26/02/2025	1,97	22,48
27/02/2025	1,92	22,66
28/02/2025	1,93	22,84
01/03/2025	1,97	23,03
02/03/2025	2,02	23,22
03/03/2025	2,07	23,42

**Pakse**



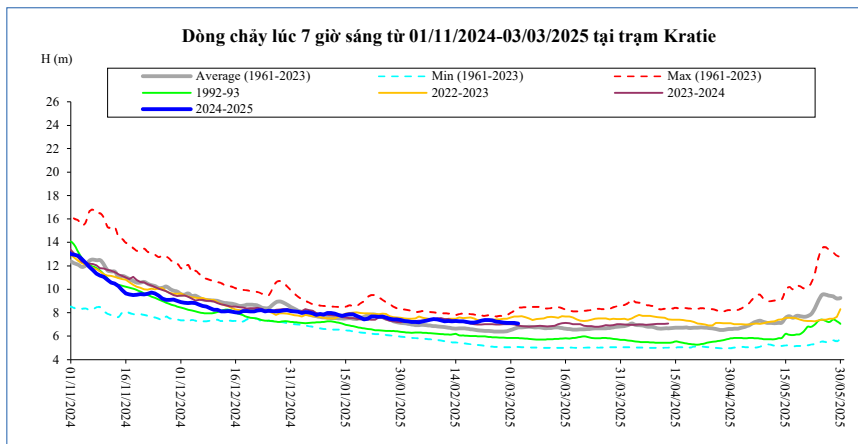
Thời gian	H(m)	W(tỷ m <sup>3</sup> )
17/02/2025	1,20	21,43
18/02/2025	1,32	21,68
19/02/2025	1,34	21,93
20/02/2025	1,30	22,18
21/02/2025	1,29	22,42
22/02/2025	1,14	22,64
23/02/2025	1,10	22,86
24/02/2025	1,06	23,07
25/02/2025	1,05	23,27
26/02/2025	1,02	23,48
27/02/2025	0,97	23,67
28/02/2025	0,96	23,87
01/03/2025	0,96	24,06
02/03/2025	1,01	24,26
03/03/2025	0,98	24,46

**Stung Treng**



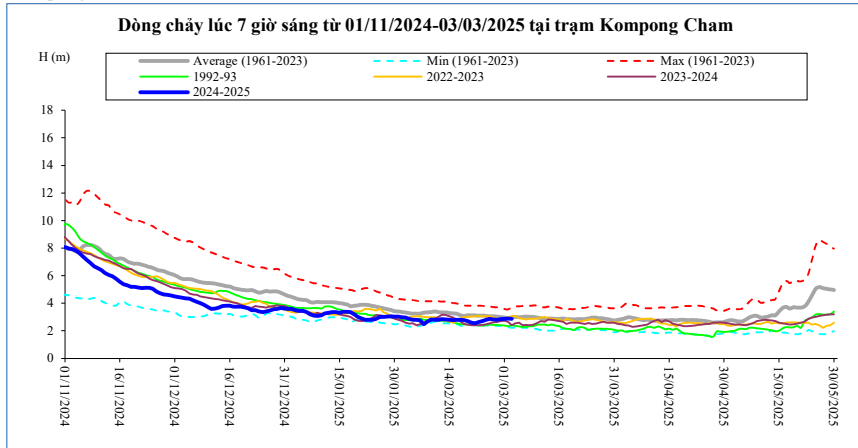
Thời gian	H(m)	W(tỷ m <sup>3</sup> )
17/02/2025	2,62	26,80
18/02/2025	2,60	27,06
19/02/2025	2,65	27,31
20/02/2025	2,71	27,57
21/02/2025	2,63	27,84
22/02/2025	2,72	28,12
23/02/2025	2,69	28,39
24/02/2025	2,65	28,66
25/02/2025	2,65	28,92
26/02/2025	2,61	29,18
27/02/2025	2,61	29,43
28/02/2025	2,61	29,67
01/03/2025	2,63	29,92
02/03/2025	2,55	30,17
03/03/2025	2,57	30,41

**Kratie**



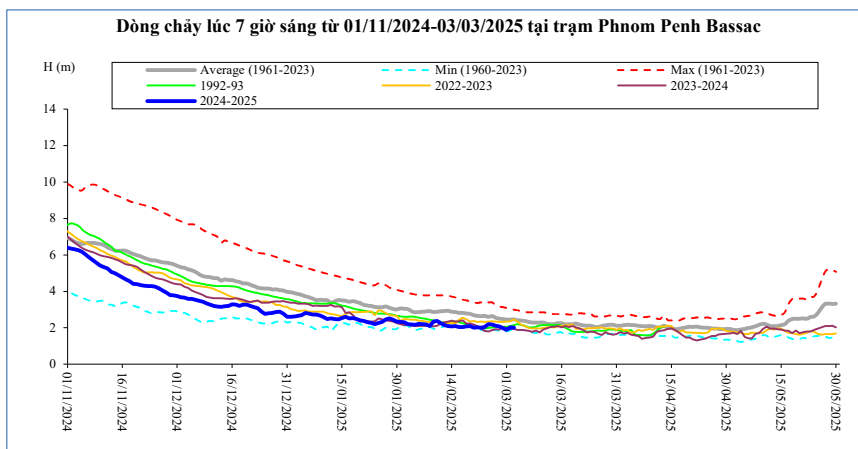
Thời gian	H(m)	W(tỷ m <sup>3</sup> )
17/02/2025	7,21	27,51
18/02/2025	7,14	27,76
19/02/2025	7,14	28,02
20/02/2025	7,22	28,28
21/02/2025	7,31	28,56
22/02/2025	7,37	28,84
23/02/2025	7,37	29,12
24/02/2025	7,34	29,40
25/02/2025	7,23	29,67
26/02/2025	7,22	29,93
27/02/2025	7,14	30,18
28/02/2025	7,12	30,44
01/03/2025	7,12	30,69
02/03/2025	7,13	30,94
03/03/2025	7,08	31,19

**Kompong Cham**



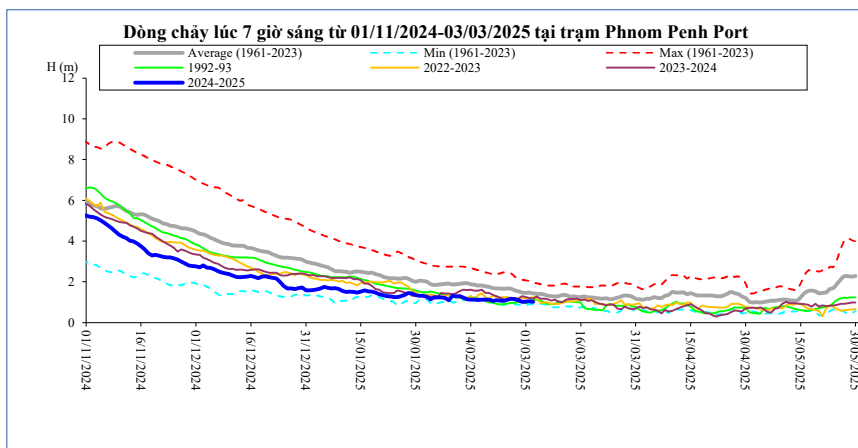
Thời gian	H(m)	Hbq(m)
17/02/2025	2,80	3,13
18/02/2025	2,78	3,09
19/02/2025	2,70	3,13
20/02/2025	2,60	3,13
21/02/2025	2,55	3,12
22/02/2025	2,64	3,11
23/02/2025	2,70	3,10
24/02/2025	2,80	3,09
25/02/2025	2,88	3,06
26/02/2025	2,82	3,05
27/02/2025	2,80	3,03
28/02/2025	2,85	3,00
01/03/2025	2,88	2,97
02/03/2025	2,90	2,92
03/03/2025	2,88	2,97

**Phnom Penh Bassac**



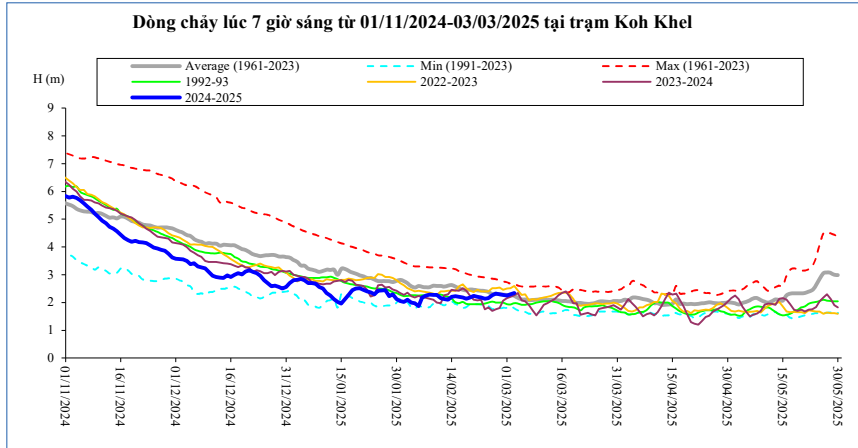
Thời gian	H(m)	Hbq(m)
17/02/2025	2,05	2,82
18/02/2025	2,07	2,78
19/02/2025	2,09	2,76
20/02/2025	2,01	2,69
21/02/2025	2,03	2,65
22/02/2025	2,01	2,64
23/02/2025	2,04	2,65
24/02/2025	2,20	2,59
25/02/2025	2,18	2,64
26/02/2025	2,11	2,56
27/02/2025	2,08	2,50
28/02/2025	1,98	2,48
01/03/2025	1,88	2,44
02/03/2025	2,02	2,45
03/03/2025	2,00	2,45

**Phnom Penh Port**



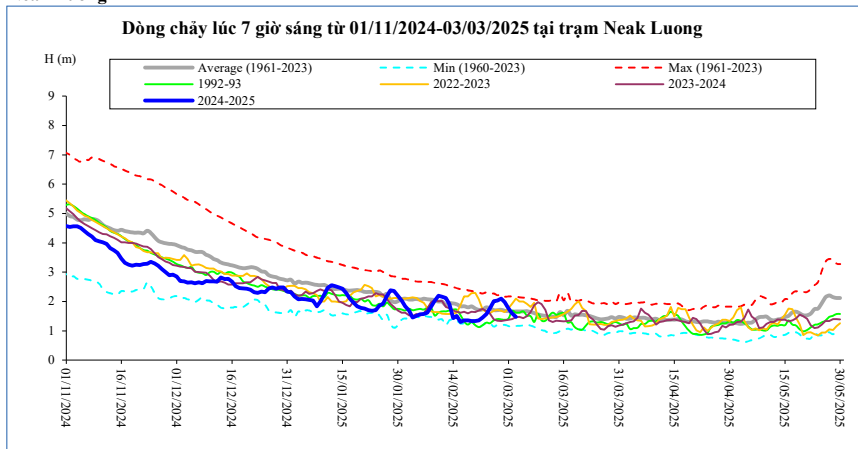
Thời gian	H(m)	Hbq(m)
17/02/2025	1,12	1,83
18/02/2025	1,13	1,79
19/02/2025	1,13	1,76
20/02/2025	1,07	1,71
21/02/2025	1,09	1,68
22/02/2025	1,08	1,68
23/02/2025	1,06	1,67
24/02/2025	1,12	1,68
25/02/2025	1,18	1,67
26/02/2025	1,14	1,59
27/02/2025	1,10	1,54
28/02/2025	1,02	1,49
01/03/2025	1,03	1,47
02/03/2025	1,05	1,48
03/03/2025	1,02	1,44

**Koh Khel**



Thời gian	H(m)	Hbq(m)
17/02/2025	2,18	2,46
18/02/2025	2,14	2,44
19/02/2025	2,18	2,47
20/02/2025	2,24	2,46
21/02/2025	2,20	2,44
22/02/2025	2,18	2,43
23/02/2025	2,14	2,42
24/02/2025	2,16	2,38
25/02/2025	2,26	2,31
26/02/2025	2,32	2,32
27/02/2025	2,30	2,30
28/02/2025	2,28	2,29
01/03/2025	2,25	2,27
02/03/2025	2,30	2,28
03/03/2025	2,34	2,24

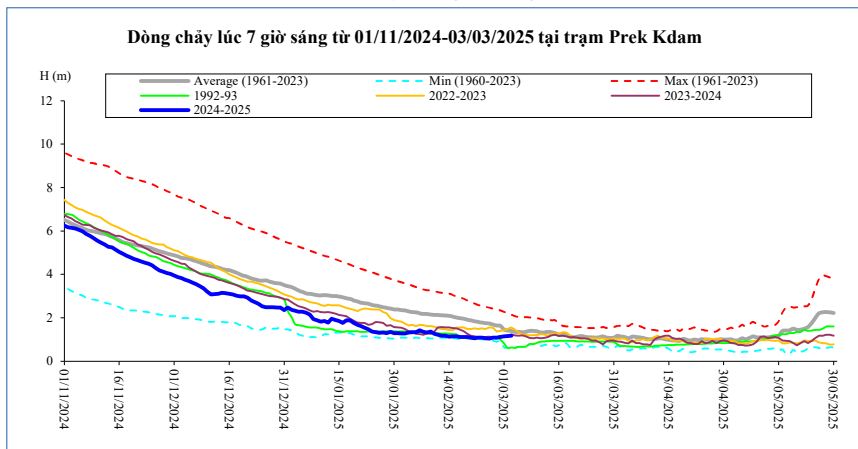
**Neak Luong**



Thời gian	H(m)	Hbq(m)
17/02/2025	1,36	1,84
18/02/2025	1,36	1,80
19/02/2025	1,34	1,83
20/02/2025	1,34	1,76
21/02/2025	1,36	1,71
22/02/2025	1,45	1,73
23/02/2025	1,58	1,80
24/02/2025	1,77	1,77
25/02/2025	2,01	1,71
26/02/2025	2,03	1,71
27/02/2025	2,10	1,72
28/02/2025	1,98	1,68
01/03/2025	1,76	1,67
02/03/2025	1,60	1,65
03/03/2025	1,48	1,66

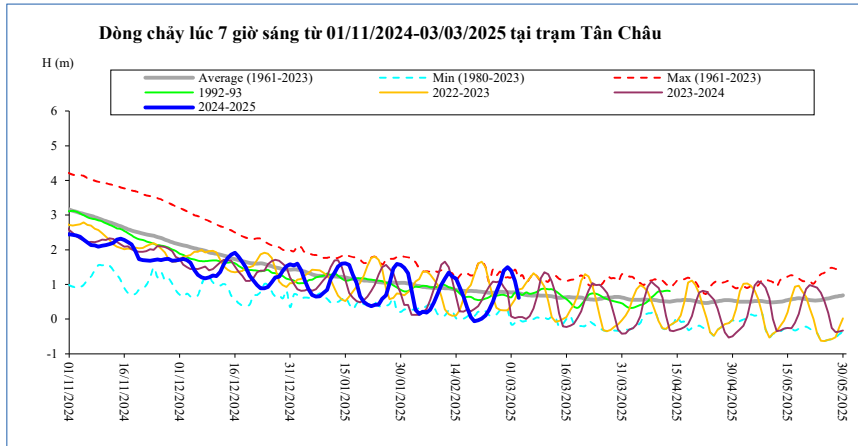
**Prek Kdam**

Biển Hồ chảy ra sông Mê Công,



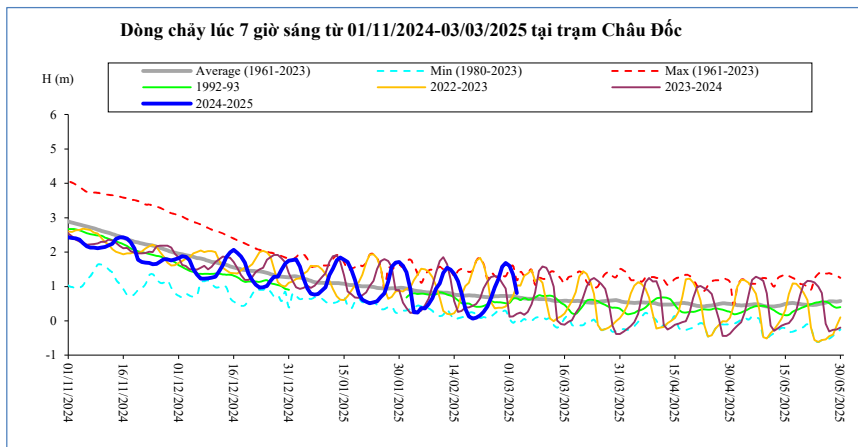
Thời gian	H(m)	Hbq(m)
17/02/2025	1,12	1,99
18/02/2025	1,12	1,96
19/02/2025	1,11	1,92
20/02/2025	1,08	1,88
21/02/2025	1,06	1,85
22/02/2025	1,08	1,81
23/02/2025	1,09	1,78
24/02/2025	1,06	1,76
25/02/2025	1,05	1,74
26/02/2025	1,08	1,69
27/02/2025	1,08	1,65
28/02/2025	1,12	1,64
01/03/2025	1,14	1,47
02/03/2025	1,16	1,42
03/03/2025	1,18	1,40

**Tân Châu**



Thời gian	H(m)	Hbq(m)
17/02/2025	0,35	0,81
18/02/2025	0,06	0,81
19/02/2025	-0,06	0,81
20/02/2025	-0,03	0,80
21/02/2025	0,01	0,79
22/02/2025	0,11	0,78
23/02/2025	0,26	0,76
24/02/2025	0,50	0,76
25/02/2025	0,79	0,77
26/02/2025	1,06	0,78
27/02/2025	1,40	0,78
28/02/2025	1,50	0,78
01/03/2025	1,40	0,77
02/03/2025	1,10	0,77
03/03/2025	0,61	0,75

**Châu Đốc**



Thời gian	H(m)	Hbq(m)
17/02/2025	0,35	0,74
18/02/2025	0,13	0,74
19/02/2025	0,06	0,73
20/02/2025	0,09	0,72
21/02/2025	0,16	0,71
22/02/2025	0,26	0,70
23/02/2025	0,42	0,69
24/02/2025	0,66	0,69
25/02/2025	0,98	0,71
26/02/2025	1,21	0,72
27/02/2025	1,57	0,72
28/02/2025	1,68	0,72
01/03/2025	1,60	0,72
02/03/2025	1,35	0,72
03/03/2025	0,81	0,68

Ghi chú:

-: Không có số liệu

H(m): Mức nước lúc 7 giờ sáng lấy theo số liệu thực đo của MRC, W (tỷ m<sup>3</sup>): Ước tính của Viện Quy hoạch Thủy lợi Miền Nam,

W là tổng lượng nước kể từ ngày 01 tháng 12 năm 2024. Riêng Biên Hồ là dung tích hiện tại, Hbq (m): Mức nước trung bình nhiều năm,



### BẢN ĐỒ VỊ TRÍ CÁC TRẠM DỌC DÒNG CHÍNH MÊ CÔNG

